

Converting Colors

HunterLab(29.0459, 1.1743,
5.4737)

Have a look what the booklet for
HunterLab(29.0459, 1.1743, 5.4737)
contains.

HunterLab(29.2102, 1.1458, 5.5749)	3
<i>Conversions</i>	4
<i>Details</i>	6
<i>Harmonies</i>	12
<i>Previews</i>	24
<i>Color Blindness Simulation</i>	28
<i>CSS Examples</i>	31

Color

**HunterLab(29.2102, 1.1458,
5.5749)**

Conversions

Conversions Part 1

Format	Color
Hex	5D5048
RGB	93, 80, 72
RGB Percent	36%, 31%, 28%
CMY	0.6353, 0.6863, 0.7176
CMYK	0.00, 0.14, 0.23, 0.64
HSL	23°, 13%, 32%
HSV	23°, 23%, 36%
XYZ	8.5526, 8.5324, 7.3271
YIQ	82.9750, 10.3160, 0.2680

Conversions

Conversions Part 2

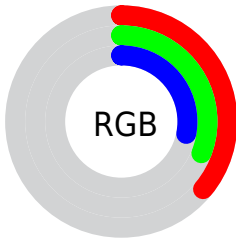
Format	Color
RYB	93, 85, 72
Decimal	6115400
CIELab	35.07, 3.93, 6.70
CIELCh	35, 7.769, 59.577
Yxy	8.5327, 0.3503, 0.3495
Android (android.graphics.Color)	4284305480 (0xFF5D5048)
YUV	82.9750, -5.4107, 8.7919
Hunter-Lab	29.2102, 1.1458, 5.5749

Details

The HunterLab color **29.2102, 1.1458, 5.5749** is a dark color, and the websafe version is hex **666666**. A complement of this color would be **29.4361, -3.6275, -2.7841**, and the grayscale version is **29.4188, -1.5697, 1.5984**.

A 20% lighter version of the original color is **47.9436, 0.7701, 7.5815**, and **13.9814, 1.3848, 3.7102** is the 20% darker color. If you saturate the color by 10%, you get **27.5920, 2.6162, 7.0368**, and if you desaturate by 10%, it is **30.8916, -0.2108, 3.9769**.

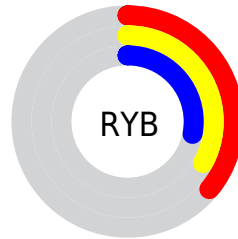
Distribution



Red (36%)

Green (31%)

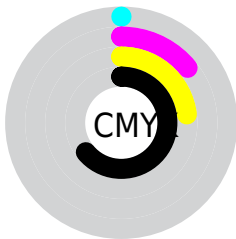
Blue (28%)



Red (36%)

Yellow (33%)

Blue (28%)

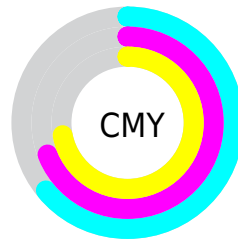


Cyan (0%)

Magenta (14%)

Yellow (23%)

Black (64%)



Cyan (64%)

Magenta (69%)

Yellow (72%)

Brightness & Saturation Gradients

These gradients show how the HunterLab color 29.2102, 1.1458, 5.5749 changes by changing the brightness by 10 percent. The first figure shows a shift by +10% for each color and the second figure -10%.

Similar to the brightness gradients but the following saturation gradients show a change of the HunterLab color 29.2102, 1.1458, 5.5749 by changing the saturation by 10% instead.

■ 29.2102, 1.1458,
5.5749

■ 29.2102, 1.1458,
5.5749

■ 134.1092, -2.7178,
14.2589

■ 21.0658, 1.3111,
4.6531

■ 47.9546, 0.6138,
7.4157

■ 13.8611, 1.3938,
3.7095

■ 58.4241, 0.2653,
8.3478

■ 7.4909, 1.8885,
4.1150

■ 69.5611, -0.1312,
9.2928

0.0000, NaN, NaN

0.0000, NaN, NaN

■ 81.3275, -0.5717,
10.2526

0.0000, NaN, NaN

■ 93.6915, -1.0531,
11.2285

0.0000, NaN, NaN

106.6253, -1.5726,

0.0000, NaN, NaN

12.2212

0.0000, NaN, NaN

120.1050, -2.1282,
13.2312

■ 29.2102, 1.1458,
5.5749

■ 29.2102, 1.1458,
5.5749

■ 27.5920, 2.6162,
7.0368

■ 30.8916, -0.2108,
3.9769

■ 26.0416, 4.2104,
8.3415

■ 32.6285, -1.4595,
2.2585

■ 24.5670, 5.9327,
9.4671

■ 34.4165, -2.6100,
0.4348

■ 23.1762, 7.7837,
10.3890

■ 36.2514, -3.6712,
-1.4819

■ 21.8782, 9.7575,
11.0822

■ 38.1292, -4.6514,
-3.4813

■ 20.6824, 11.8388,
11.5237

■ 40.0466, -5.5583,
-5.5545

■ 19.5967, 13.9913,
11.7208

■ 42.0007, -6.3991,
-7.6942

■ 18.8550, 15.5522,
11.8906

■ 43.9889, -7.1800,
-9.8941

■ 46.0089, -7.9069,
-12.1488

Harmonies

Analogous

The Analogous color harmony consists of three colors that are next to each other on the color wheel.



29.2109, 3.1451, 3.9482



29.2102, 1.1458, 5.5749



29.2109, -1.5214, 6.1543

Triad

The Triadic color harmony groups three colors that are evenly spaced from another and form a triangle on the color wheel.



29.2109, 1.1449, 5.5753



29.2109, -6.6246, 1.6269



29.2109, 1.0754, -3.0930

Complementary

The Complementary color scheme is a pair of colors which are on the opposite of each other on the color wheel.



29.2102, 1.1458, 5.5749



29.4361, -3.6275, -2.7841

Split Complementary

Split-complementary colors differ from the complementary color scheme. The scheme consists of three colors, the original color and two neighbors of the complement color.



29.2109, -1.5989, -3.8551



29.2102, 1.1458, 5.5749



29.2109, -5.9853, -0.9828

Square

The Square scheme is like the rectangle color scheme, but the four colors are evenly spaced on the color wheel.



29.2109, 1.1449, 5.5753



29.2109, -5.9489, 4.0065



29.2109, -4.1702, -3.0503



29.2109, 3.1040, -1.0524

Rectangle

The Rectangle color scheme consists of four colors that form a rectangle on the color wheel.



29.2102, 1.1458, 5.5749



29.2109, -3.2978, 5.9131



29.2109, -4.1702, -3.0503



29.2109, 0.2190, -3.5151

Sweetspot

The Sweet Spot groups the original color and five complimentary colors.



29.2109, 1.1449, 5.5753



41.6217, -1.1693, 4.0139



27.6092, 6.5305, -1.4638



20.8092, -0.5628, 2.0412



71.2094, -3.7996, 3.8689



21.6712, -1.1563, 1.1774

Same Dimension

The Same Dimension uses a secret algorithm to generate beautiful new colors.



29.2109, 1.1449, 5.5753



37.0925, 2.4860, 8.3184



31.8453, -3.2810, 8.1506



15.7253, -0.3456, 1.6669



22.2105, 19.0538, 14.0196



50.4028, 48.7162, 31.9108

Inverse Universe

The Inverse Universe completely reimagines the original color for something new.



29.4361, -3.6275, -2.7841



37.4519, -5.1563, -5.0677



26.7829, 0.7887, -6.4080



15.7700, -1.2881, 0.0158



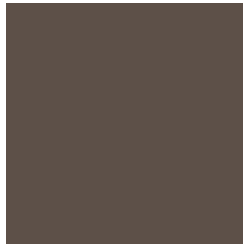
22.8835, -2.1781, -23.9005



51.8882, -2.3655, -59.7493

Previews

White Background



This preview shows how the HunterLab color 29.2102, 1.1458, 5.5749 looks on a white background.

Color Contrast Check

Large Text (above 18pt) WCAG AA ✓ Pass

Any Text WCAG AA ✓ Pass

Large Text (above 18pt) WCAG AAA ✓ Pass

Any Text WCAG AAA ✓ Pass

Black Background



This preview shows how the HunterLab color 29.2102, 1.1458, 5.5749 looks on a black background.

Color Contrast Check

Large Text (above 18pt) WCAG AA × Fail

Any Text WCAG AA × Fail

Large Text (above 18pt) WCAG AAA × Fail

Any Text WCAG AAA × Fail

If you want to check with other color combinations, try the [Color Contrast Checker](#).

HunterLab 29.2102, 1.1458, 5.5749 Background



This preview shows how black text looks on a background with the HunterLab color 29.2102, 1.1458, 5.5749.



This preview shows how white text looks on a background with the HunterLab color 29.2102, 1.1458,

Color Blindness Simulation

Color vision deficiency is a very complex topic, and I could not describe the different causes any better than Wikipedia does, so if you want to learn more, you should check out their [article about color blindness](#).

Dichromacy



Original Color

29.2102, 1.1458, 5.5749

Protanopia

29.1446, -1.6528, 5.1067

Deuteranopia

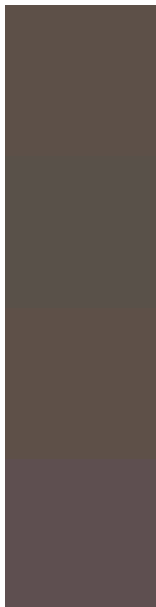
29.3000, 1.4493, 5.6737



Tritanopia

29.1008, 3.9147, 0.9116

Trichromacy



Original Color

29.2102, 1.1458, 5.5749

Protanomaly

29.1372, -0.3579, 5.1215

Deuteranomaly

29.3000, 1.4493, 5.6737

Tritanomaly

29.2418, 2.9110, 2.6815

Monochromacy



Original Color

29.2102, 1.1458, 5.5749

Achromatopsia

29.4110, -1.5693, 1.5980

Achromatomaly

29.3689, -0.5905, 3.1533

CSS Examples

Text

The CSS property to change the color of the text to HunterLab 29.2102, 1.1458, 5.5749 is called "color". The color property can be set on classes, ids or directly on the HTML element.

This example shows how text in the color `rgb(93, 80, 72)` looks like.

```
.text, #text, p{  
    color:rgb(93, 80, 72)  
}
```

If you want to add a text shadow in that color use the text-shadow property, you can generate a text shadow directly with our [CSS Text Shadow Generator](#).

Here you see how black text with a 4 pixel rgb(93, 80, 72) colored shadow looks like.

```
.shadow{ text-shadow: 4px 4px 2px rgb(93, 80, 72) }
```

Border

The CSS property to change the border of an element to HunterLab 29.2102, 1.1458, 5.5749 is called "border". The border property can be set on classes, ids or directly on the HTML element.

This example shows the color as border, it can be applied via the CSS property "border" or "border-color".

```
.border, #border, table{ border:4px solid rgb(93, 80, 72) }
```


If only the border color should be changed use the property border-color.

```
.border{ border-color:rgb(93, 80, 72) }
```

If you want to add a box shadow in that color use:

Here you see how a box with a 4 pixel rgb(93, 80, 72) colored shadow looks like.

```
.boxshadow{ -moz-box-shadow:4px 4px 4px  
4px rgb(93, 80, 72); -webkit-box-  
shadow:4px 4px 4px 4px rgb(93, 80, 72);  
box-shadow:4px 4px 4px 4px rgb(93, 80, 72)  
}
```

Background

The CSS property to change the background color of an element to HunterLab 29.2102, 1.1458, 5.5749 is called "background". The background property can be set on classes, ids or directly on the HTML element.

```
.background, #background, body{  
background: rgb(93, 80, 72) }
```

If only the background color should be changed can be used:

```
.background{ background-color: rgb(93, 80,  
72) }
```

This example shows the color as background, it is applied via the CSS property "background".

To optimize and compress your CSS code, you can use our [online CSS compressor and optimizer](#) based on csstidy. If you want to create a linear or radial gradient as background or border, check our [CSS Gradient Generator](#).

Hey! You found this booklet interesting? Support Converting Colors with the new Membership Option!

The pro membership hides all ads, plus gives you double the colors in the color bucket, and more awesome pro features!

[Learn more, Memberships starting at \\$2.50/m!](#)

**Follow me
on Twitter!**

@ConvertingColor