

Converting Colors

HunterLab(29.3051, 9.1609,
3.2521)

Have a look what the booklet for
HunterLab(29.3051, 9.1609, 3.2521)
contains.

HunterLab(29.3051, 9.1609, 3.2521)	3
<i>Conversions</i>	4
<i>Details</i>	6
<i>Harmonies</i>	12
<i>Previews</i>	24
<i>Color Blindness Simulation</i>	28
<i>CSS Examples</i>	31

Color

**HunterLab(29.3051, 9.1609,
3.2521)**

Conversions

Conversions Part 1

Format	Color
Hex	6B4A4F
RGB	107, 74, 79
RGB Percent	42%, 29%, 31%
CMY	0.5804, 0.7098, 0.6902
CMYK	0.00, 0.31, 0.26, 0.58
HSL	351°, 18%, 35%
HSV	351°, 31%, 42%
XYZ	9.9235, 8.5879, 8.5318
YIQ	84.4370, 18.0630, 8.5510

Conversions

Conversions Part 2

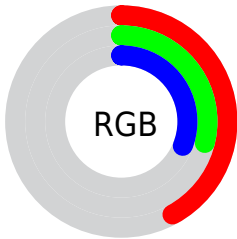
Format	Color
R_{YB}	107, 74, 79
Decimal	7031375
CIE Lab	35.18, 14.84, 2.66
CIE LCh	35, 15.077, 10.146
Yxy	8.5883, 0.3669, 0.3176
Android (android.graphics.Color)	4285221455 (0xFF6B4A4F)
YUV	84.4370, -2.6804, 19.7878
Hunter-Lab	29.3051, 9.1609, 3.2521

Details

The HunterLab color **29.3051, 9.1609, 3.2521** is a dark color, and the websafe version is hex **663333**. A complement of this color would be **35.9594, -10.9049, 1.2399**, and the grayscale version is **29.9399, -1.5975, 1.6267**.

A 20% lighter version of the original color is **48.0576, 9.7864, 4.5889**, and **13.9622, 7.6880, 1.9857** is the 20% darker color. If you saturate the color by 10%, you get **26.7501, 12.9814, 3.8965**, and if you desaturate by 10%, it is **32.0656, 5.4160, 2.7502**.

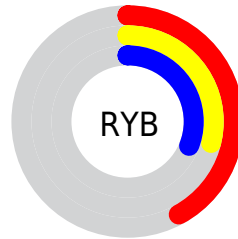
Distribution



Red (42%)

Green (29%)

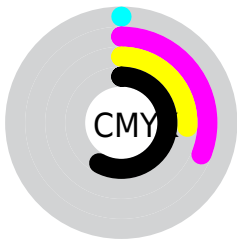
Blue (31%)



Red (42%)

Yellow (29%)

Blue (31%)

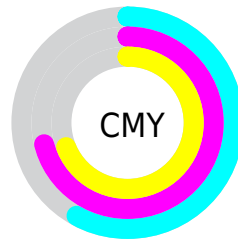


Cyan (0%)

Magenta (31%)

Yellow (26%)

Black (58%)



Cyan (58%)

Magenta (71%)

Yellow (69%)

Brightness & Saturation Gradients

These gradients show how the HunterLab color 29.3051, 9.1609, 3.2521 changes by changing the brightness by 10 percent. The first figure shows a shift by +10% for each color and the second figure -10%.

Similar to the brightness gradients but the following saturation gradients show a change of the HunterLab color 29.3051, 9.1609, 3.2521 by changing the saturation by 10% instead.

■ 29.3051, 9.1609,
3.2521

■ 29.3051, 9.1609,
3.2521

■ 134.2670, 9.9050,
10.1150

■ 21.1510, 8.6451,
2.6271

■ 48.0665, 9.8485,
4.5878

■ 13.9351, 7.9848,
2.0271

■ 58.5437, 10.0548,
5.2977

■ 7.5721, 8.1763,
1.8661

■ 69.6878, 10.1840,
6.0352

0.0000, NaN, NaN

0.0000, NaN, NaN

■ 81.4610, 10.2440,
6.7998

0.0000, NaN, NaN

■ 93.8314, 10.2412,
7.5907

0.0000, NaN, NaN

106.7715, 10.1810,

0.0000, NaN, NaN

120.2570, 10.0677,
9.2489

■ 29.3051, 9.1609,
3.2521

■ 29.3051, 9.1609,
3.2521

■ 26.7501, 12.9814,
3.8965

■ 32.0656, 5.4160,
2.7502

■ 24.4360, 16.8190,
4.6939

■ 34.9987, 1.7762,
2.3724

■ 22.4068, 20.5550,
5.6442

■ 38.0798, -1.7547,
2.1017

■ 20.7087, 24.0016,
6.7242

■ 41.2888, -5.1825,
1.9220

■ 19.3837, 26.9080,
7.8773

■ 44.6096, -8.5178,
1.8194

■ 18.4574, 29.0151,
9.0127

■ 48.0289, -11.7728,
1.7822

■ 17.7872, 30.6749,
9.8363

■ 51.5362, -14.9596,
1.8004

■ 55.1227, -18.0890,
1.8661

■ 58.7811, -21.1710,
1.9726

Harmonies

Analogous

The Analogous color harmony consists of three colors that are next to each other on the color wheel.



29.3058, 8.6526, -1.8930



29.3051, 9.1609, 3.2521



29.3058, 6.6413, 7.1841

Triad

The Triadic color harmony groups three colors that are evenly spaced from another and form a triangle on the color wheel.



29.3058, 9.1597, 3.2526



29.3058, -7.8525, 8.0819



29.3058, -4.9476, -9.0702

Complementary

The Complementary color scheme is a pair of colors which are on the opposite of each other on the color wheel.



29.3051, 9.1609, 3.2521



35.9594, -10.9049, 1.2399

Split Complementary

Split-complementary colors differ from the complementary color scheme. The scheme consists of three colors, the original color and two neighbors of the complement color.



29.3058, -8.9577, -5.3712



29.3051, 9.1609, 3.2521



29.3058, -10.5504, 4.7012

Square

The Square scheme is like the rectangle color scheme, but the four colors are evenly spaced on the color wheel.



29.3058, 9.1597, 3.2526



29.3058, -3.3396, 9.6255



29.3058, -10.9400, -0.1651



29.3058, 0.2523, -9.6461

Rectangle

The Rectangle color scheme consists of four colors that form a rectangle on the color wheel.



29.3051, 9.1609, 3.2521



29.3058, 3.6839, 8.8210



29.3058, -10.9400, -0.1651



29.3058, -6.4691, -8.1233

Sweetspot

The Sweet Spot groups the original color and five complimentary colors.



29.3058, 9.1597, 3.2526



47.4741, 1.6186, 3.1082



29.5892, 11.7176, -9.4346



23.1282, 1.0657, 1.5526



75.5302, -4.0301, 4.1037



25.2436, -1.3469, 1.3715

Same Dimension

The Same Dimension uses a secret algorithm to generate beautiful new colors.



29.3058, 9.1597, 3.2526



36.7206, 15.9357, 4.9533



31.8082, 3.5299, 7.5849



17.6736, 0.5495, 1.1499



19.6103, 33.8020, 10.9755



44.1708, 75.9473, 26.1895

Inverse Universe

The Inverse Universe completely reimagines the original color for something new.



29.3058, 9.1597, 3.2526



36.7206, 15.9357, 4.9533



32.9901, -5.4592, -4.7663



17.6736, 0.5495, 1.1499



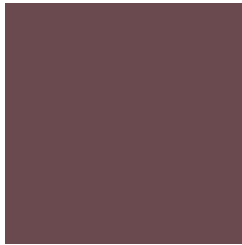
19.6103, 33.8020, 10.9755



44.1708, 75.9473, 26.1895

Previews

White Background



This preview shows how the HunterLab color 29.3051, 9.1609, 3.2521 looks on a white background.

Color Contrast Check

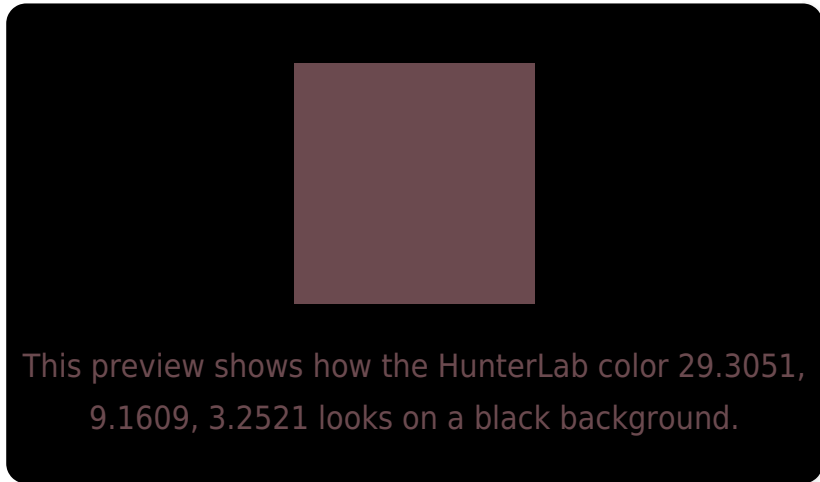
Large Text (above 18pt) WCAG AA ✓ Pass

Any Text WCAG AA ✓ Pass

Large Text (above 18pt) WCAG AAA ✓ Pass

Any Text WCAG AAA ✓ Pass

Black Background



Color Contrast Check

Large Text (above 18pt) WCAG AA × Fail

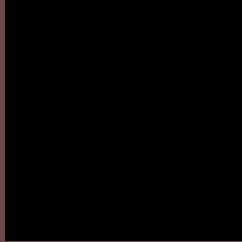
Any Text WCAG AA × Fail

Large Text (above 18pt) WCAG AAA × Fail

Any Text WCAG AAA × Fail

If you want to check with other color combinations, try the [Color Contrast Checker](#).

HunterLab 29.3051, 9.1609, 3.2521 Background



This preview shows how black text looks on a background with the HunterLab color 29.3051, 9.1609, 3.2521.



This preview shows how white text looks on a background with the HunterLab color 29.3051, 9.1609,

Color Blindness Simulation

Color vision deficiency is a very complex topic, and I could not describe the different causes any better than Wikipedia does, so if you want to learn more, you should check out their [article about color blindness](#).

Dichromacy



Original Color

29.3051, 9.1609, 3.2521

Protanopia

29.5151, -1.1549, 1.3180

Deuteranopia

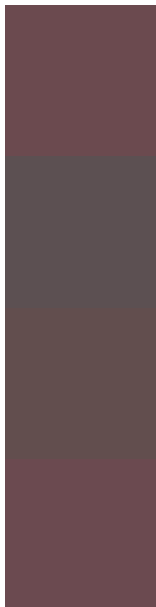
29.3505, 1.8998, 3.5588



Tritanopia

29.3301, 9.2888, 2.8939

Trichromacy



Original Color

29.3051, 9.1609, 3.2521

Protanomaly

29.3630, 2.1429, 2.0122

Deuteranomaly

29.3181, 4.3201, 3.5651

Tritanomaly

29.3301, 9.2888, 2.8939

Monochromacy



Original Color

29.3051, 9.1609, 3.2521

Achromatopsia

29.7751, -1.5887, 1.6177

Achromatomaly

29.3630, 2.1429, 2.0122

CSS Examples

Text

The CSS property to change the color of the text to HunterLab 29.3051, 9.1609, 3.2521 is called "color". The color property can be set on classes, ids or directly on the HTML element.

This example shows how text in the color `rgb(107, 74, 79)` looks like.

```
.text, #text, p{  
    color:rgb(107, 74, 79)  
}
```

If you want to add a text shadow in that color use the text-shadow property, you can generate a text shadow directly with our [CSS Text Shadow Generator](#).

Here you see how black text with a 4 pixel rgb(107, 74, 79) colored shadow looks like.

```
.shadow{ text-shadow: 4px 4px 2px rgb(107, 74, 79) }
```

Border

The CSS property to change the border of an element to HunterLab 29.3051, 9.1609, 3.2521 is called "border".

The border property can be set on classes, ids or directly on the HTML element.

This example shows the color as border, it can be applied via the CSS property "border" or "border-color".

```
.border, #border, table{ border:4px solid rgb(107, 74, 79) }
```


If only the border color should be changed use the property border-color.

```
.border{ border-color:rgb(107, 74, 79) }
```

If you want to add a box shadow in that color use:

Here you see how a box with a 4 pixel rgb(107, 74, 79) colored shadow looks like.

```
.boxshadow{ -moz-box-shadow:4px 4px 4px  
4px rgb(107, 74, 79); -webkit-box-  
shadow:4px 4px 4px 4px rgb(107, 74, 79);  
box-shadow:4px 4px 4px 4px rgb(107, 74,  
79) }
```

Background

The CSS property to change the background color of an element to HunterLab 29.3051, 9.1609, 3.2521 is called "background". The background property can be set on classes, ids or directly on the HTML element.

```
.background, #background, body{  
background: rgb(107, 74, 79) }
```

If only the background color should be changed can be used:

```
.background{ background-color: rgb(107, 74,  
79) }
```

This example shows the color as background, it is applied via the CSS property "background".

To optimize and compress your CSS code, you can use our [online CSS compressor and optimizer](#) based on csstidy. If you want to create a linear or radial gradient as background or border, check our [CSS Gradient Generator](#).

Hey! You found this booklet interesting? Support Converting Colors with the new Membership Option!

The pro membership hides all ads, plus gives you double the colors in the color bucket, and more awesome pro features!

[Learn more, Memberships starting at \\$2.50/m!](#)

**Follow me
on Twitter!**

@ConvertingColor