

Converting Colors

HunterLab(29.3204, 5.1978,
0.6087)

Have a look what the booklet for
HunterLab(29.3204, 5.1978, 0.6087)
contains.

HunterLab(29.4042, 4.9617, 0.8761)	3
<i>Conversions</i>	4
<i>Details</i>	6
<i>Harmonies</i>	12
<i>Previews</i>	24
<i>Color Blindness Simulation</i>	28
<i>CSS Examples</i>	31

Color

**HunterLab(29.4042, 4.9617,
0.8761)**

Conversions

Conversions Part 1

Format	Color
Hex	614E55
RGB	97, 78, 85
RGB Percent	38%, 31%, 33%
CMY	0.6196, 0.6941, 0.6667
CMYK	0.00, 0.20, 0.12, 0.62
HSL	338°, 11%, 34%
HSV	338°, 20%, 38%
XYZ	9.2939, 8.6461, 9.7734
YIQ	84.4790, 9.0770, 6.2050

Conversions

Conversions Part 2

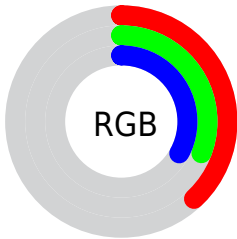
Format	Color
RYB	97, 78, 85
Decimal	6377045
CIELab	35.29, 9.26, -1.11
CIELCh	35, 9.322, 353.160
Yxy	8.6465, 0.3354, 0.3120
Android (android.graphics.Color)	4284567125 (0xFF614E55)
YUV	84.4790, 0.2569, 10.9809
Hunter-Lab	29.4042, 4.9617, 0.8761

Details

The HunterLab color **29.4042, 4.9617, 0.8761** is a dark color, and the websafe version is hex **666666**. A complement of this color would be **33.0266, -7.7355, 2.8495**, and the grayscale version is **29.9471, -1.5979, 1.6271**.

A 20% lighter version of the original color is **48.1912, 5.2106, 1.5857**, and **14.0548, 4.2392, 0.2661** is the 20% darker color. If you saturate the color by 10%, you get **26.9723, 8.5345, 0.5622**, and if you desaturate by 10%, it is **31.9839, 1.4507, 1.3326**.

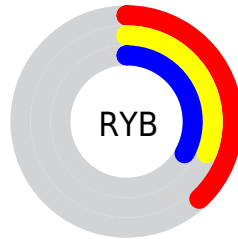
Distribution



Red (38%)

Green (31%)

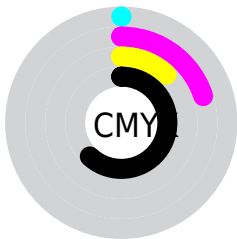
Blue (33%)



Red (38%)

Yellow (31%)

Blue (33%)

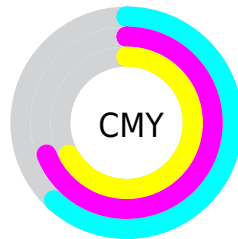


Cyan (0%)

Magenta (20%)

Yellow (12%)

Black (62%)



Cyan (62%)

Magenta (69%)

Yellow (67%)

Brightness & Saturation Gradients

These gradients show how the HunterLab color 29.4042, 4.9617, 0.8761 changes by changing the brightness by 10 percent. The first figure shows a shift by +10% for each color and the second figure -10%.

Similar to the brightness gradients but the following saturation gradients show a change of the HunterLab color 29.4042, 4.9617, 0.8761 by changing the saturation by 10% instead.

■ 29.4042, 4.9617,
0.8761

■ 29.4042, 4.9617,
0.8761

■ 134.4314, 3.3773,
6.1255

■ 21.2398, 4.7845,
0.5046

■ 48.1833, 5.0377,
1.7722

■ 14.0125, 4.4889,
0.1927

■ 58.6685, 4.9642,
2.2863

■ 7.6559, 4.8592,
-0.1844

■ 69.8200, 4.8276,
2.8399

0.0000, NaN, NaN

0.0000, NaN, NaN

■ 81.6003, 4.6341,
3.4306

0.0000, NaN, NaN

■ 93.9774, 4.3887,
4.0562

0.0000, NaN, NaN

106.9239, 4.0952,

0.0000, NaN, NaN

120.4156, 3.7572,
5.4051

■ 29.4042, 4.9617,
0.8761

■ 29.4042, 4.9617,
0.8761

■ 26.9723, 8.5345,
0.5622

■ 31.9839, 1.4507,
1.3326

■ 24.7110, 12.1432,
0.4209

■ 34.6890, -1.9858,
1.9042

■ 22.6508, 15.7281,
0.4888

■ 37.5036, -5.3487,
2.5706

■ 20.8261, 19.1861,
0.8029

■ 40.4144, -8.6436,
3.3154

■ 19.2737, 22.3583,
1.3925

■ 43.4103, -11.8781,
4.1257

■ 18.0282, 25.0353,
2.2655

■ 46.4825, -15.0604,
4.9914

■ 17.1134, 26.9954,
3.3922

■ 49.6235, -18.1987,
5.9046

■ 16.3629, 28.6627,
4.5410

■ 52.8271, -21.3004,
6.8588

■ 16.3314, 28.7380,
4.5848

■ 56.0882, -24.3719,
7.8488

Harmonies

Analogous

The Analogous color harmony consists of three colors that are next to each other on the color wheel.



29.4049, 3.6520, -2.2309



29.4042, 4.9617, 0.8761



29.4049, 4.4590, 3.8649

Triad

The Triadic color harmony groups three colors that are evenly spaced from another and form a triangle on the color wheel.



29.4049, 4.9608, 0.8766



29.4049, -4.0114, 6.6020



29.4049, -5.2593, -3.6202

Complementary

The Complementary color scheme is a pair of colors which are on the opposite of each other on the color wheel.



29.4042, 4.9617, 0.8761



33.0266, -7.7355, 2.8495

Split Complementary

Split-complementary colors differ from the complementary color scheme. The scheme consists of three colors, the original color and two neighbors of the complement color.



29.4049, -7.1503, -0.8595



29.4042, 4.9617, 0.8761



29.4049, -6.4522, 4.9771

Square

The Square scheme is like the rectangle color scheme, but the four colors are evenly spaced on the color wheel.



29.4049, 4.9608, 0.8766



29.4049, -0.8152, 6.9587



29.4049, -7.5773, 2.3066



29.4049, -2.3183, -5.0050

Rectangle

The Rectangle color scheme consists of four colors that form a rectangle on the color wheel.



29.4042, 4.9617, 0.8761



29.4049, 3.1755, 5.4178



29.4049, -7.5773, 2.3066



29.4049, -6.0335, -2.8087

Sweetspot

The Sweet Spot groups the original color and five complimentary colors.



29.4049, 4.9608, 0.8766



43.0649, 0.3536, 1.9845



29.1063, 4.6957, -5.0200



21.3901, 0.2646, 0.9747



72.2857, -3.8570, 3.9274



22.5557, -1.2035, 1.2255

Same Dimension

The Same Dimension uses a secret algorithm to generate beautiful new colors.



29.4049, 4.9608, 0.8766



36.8437, 8.8781, 0.9117



29.7674, 3.0137, 4.0381



16.1367, 0.6042, 0.6870



19.0271, 33.4380, 5.6782



43.7976, 76.6247, 15.7436

Inverse Universe

The Inverse Universe completely reimagines the original color for something new.



29.4049, 4.9608, 0.8766



36.8437, 8.8781, 0.9117



32.6013, -5.7352, -0.5793



16.1367, 0.6042, 0.6870



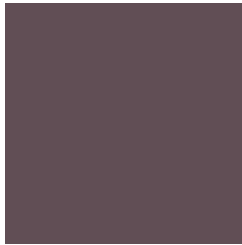
19.0271, 33.4380, 5.6782



43.7976, 76.6247, 15.7436

Previews

White Background



This preview shows how the HunterLab color 29.4042, 4.9617, 0.8761 looks on a white background.

Color Contrast Check

Large Text (above 18pt) WCAG AA ✓ Pass

Any Text WCAG AA ✓ Pass

Large Text (above 18pt) WCAG AAA ✓ Pass

Any Text WCAG AAA ✓ Pass

Black Background



This preview shows how the HunterLab color 29.4042, 4.9617, 0.8761 looks on a black background.

Color Contrast Check

Large Text (above 18pt) WCAG AA × Fail

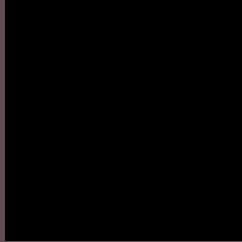
Any Text WCAG AA × Fail

Large Text (above 18pt) WCAG AAA × Fail

Any Text WCAG AAA × Fail

If you want to check with other color combinations, try the [Color Contrast Checker](#).

HunterLab 29.4042, 4.9617, 0.8761 Background



This preview shows how black text looks on a background with the HunterLab color 29.4042, 4.9617, 0.8761.



This preview shows how white text looks on a background with the HunterLab color 29.4042, 4.9617,

0.8761.

Color Blindness Simulation

Color vision deficiency is a very complex topic, and I could not describe the different causes any better than Wikipedia does, so if you want to learn more, you should check out their [article about color blindness](#).

Dichromacy



Original Color

29.4042, 4.9617, 0.8761

Protanopia

29.5467, -0.8272, -0.3344

Deuteranopia

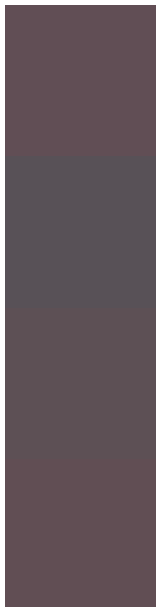
29.6055, 1.8298, 1.0633



Tritanopia

29.3773, 4.8205, 1.2587

Trichromacy



Original Color

29.4042, 4.9617, 0.8761

Protanomaly

29.4069, 1.2693, -0.0370

Deuteranomaly

29.5302, 2.8603, 0.9910

Tritanomaly

29.3773, 4.8205, 1.2587

Monochromacy



Original Color

29.4042, 4.9617, 0.8761

Achromatopsia

29.7751, -1.5887, 1.6177

Achromatomaly

29.6623, 0.6700, 1.5243

CSS Examples

Text

The CSS property to change the color of the text to HunterLab 29.4042, 4.9617, 0.8761 is called "color". The color property can be set on classes, ids or directly on the HTML element.

This example shows how text in the color `rgb(97, 78, 85)` looks like.

```
.text, #text, p{  
    color:rgb(97, 78, 85)  
}
```

If you want to add a text shadow in that color use the text-shadow property, you can generate a text shadow directly with our [CSS Text Shadow Generator](#).

Here you see how black text with a 4 pixel rgb(97, 78, 85) colored shadow looks like.

```
.shadow{ text-shadow: 4px 4px 2px rgb(97, 78, 85) }
```

Border

The CSS property to change the border of an element to HunterLab 29.4042, 4.9617, 0.8761 is called "border". The border property can be set on classes, ids or directly on the HTML element.

This example shows the color as border, it can be applied via the CSS property "border" or "border-color".

```
.border, #border, table{ border:4px solid rgb(97, 78, 85) }
```


If only the border color should be changed use the property border-color.

```
.border{ border-color:rgb(97, 78, 85) }
```

If you want to add a box shadow in that color use:

Here you see how a box with a 4 pixel rgb(97, 78, 85) colored shadow looks like.

```
.boxshadow{ -moz-box-shadow:4px 4px 4px  
4px rgb(97, 78, 85); -webkit-box-  
shadow:4px 4px 4px 4px rgb(97, 78, 85);  
box-shadow:4px 4px 4px 4px rgb(97, 78, 85)  
}
```

Background

The CSS property to change the background color of an element to HunterLab 29.4042, 4.9617, 0.8761 is called "background". The background property can be set on classes, ids or directly on the HTML element.

```
.background, #background, body{  
background: rgb(97, 78, 85) }
```

If only the background color should be changed can be used:

```
.background{ background-color: rgb(97, 78,  
85) }
```

This example shows the color as background, it is applied via the CSS property "background".

To optimize and compress your CSS code, you can use our [online CSS compressor and optimizer](#) based on csstidy. If you want to create a linear or radial gradient as background or border, check our [CSS Gradient Generator](#).

Hey! You found this booklet interesting? Support Converting Colors with the new Membership Option!

The pro membership hides all ads, plus gives you double the colors in the color bucket, and more awesome pro features!

[Learn more, Memberships starting at \\$2.50/m!](#)

**Follow me
on Twitter!**

@ConvertingColor