

Converting Colors

HunterLab(29.9720, 7.9128,
3.9841)

Have a look what the booklet for
HunterLab(29.9720, 7.9128, 3.9841)
contains.

HunterLab(29.9968, 7.7771, 3.9992)	3
<i>Conversions</i>	4
<i>Details</i>	6
<i>Harmonies</i>	12
<i>Previews</i>	24
<i>Color Blindness Simulation</i>	28
<i>CSS Examples</i>	31

Color

**HunterLab(29.9968, 7.7771,
3.9992)**

Conversions

Conversions Part 1

Format	Color
Hex	6B4D4F
RGB	107, 77, 79
RGB Percent	42%, 30%, 31%
CMY	0.5804, 0.6980, 0.6902
CMYK	0.00, 0.28, 0.26, 0.58
HSL	356°, 16%, 36%
HSV	356°, 28%, 42%
XYZ	10.1286, 8.9981, 8.6001
YIQ	86.1980, 17.2380, 6.9820

Conversions

Conversions Part 2

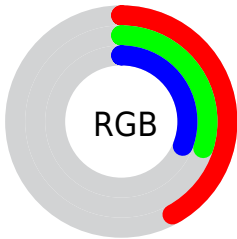
Format	Color
R_{YB}	107, 77, 79
Decimal	7032143
CIE _{Lab}	35.98, 12.99, 3.81
CIE _{LCh}	36, 13.542, 16.346
Yxy	8.9985, 0.3653, 0.3245
Android (android.graphics.Color)	4285222223 (0xFF6B4D4F)
YUV	86.1980, -3.5486, 18.2434
Hunter-Lab	29.9968, 7.7771, 3.9992

Details

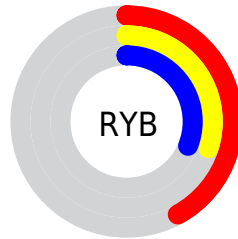
The HunterLab color **29.9968, 7.7771, 3.9992** is a dark color, and the websafe version is hex **663333**. A complement of this color would be **36.2123, -9.7981, 0.2596**, and the grayscale version is **30.5868, -1.6320, 1.6618**.

A 20% lighter version of the original color is **48.8376, 8.3031, 5.4460**, and **14.4367, 7.1738, 2.4910** is the 20% darker color. If you saturate the color by 10%, you get **27.3634, 11.5021, 4.8585**, and if you desaturate by 10%, it is **32.8293, 4.1604, 3.2379**.

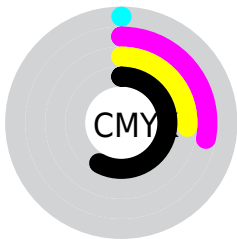
Distribution



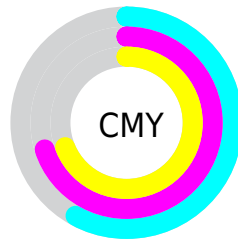
- Red (42%)
- Green (30%)
- Blue (31%)



- Red (42%)
- Yellow (30%)
- Blue (31%)



- Cyan (0%)
- Magenta (28%)
- Yellow (26%)
- Black (58%)



- Cyan (58%)
- Magenta (70%)
- Yellow (69%)

Brightness & Saturation Gradients

These gradients show how the HunterLab color 29.9968, 7.7771, 3.9992 changes by changing the brightness by 10 percent. The first figure shows a shift by +10% for each color and the second figure -10%.

Similar to the brightness gradients but the following saturation gradients show a change of the HunterLab color 29.9968, 7.7771, 3.9992 by changing the saturation by 10% instead.

■ 29.9968, 7.7771,
3.9992

■ 29.9968, 7.7771,
3.9992

■ 135.4130, 7.7144,
11.3905

■ 21.7720, 7.3797,
3.2904

■ 48.8814, 8.2515,
5.4795

■ 14.4764, 6.8475,
2.5949

■ 59.4136, 8.3606,
6.2536

■ 8.1374, 6.6202,
2.3843

■ 70.6095, 8.3977,
7.0514

0.0000, NaN, NaN

0.0000, NaN, NaN

■ 82.4317, 8.3700,
7.8728

0.0000, NaN, NaN

■ 94.8488, 8.2834,
8.7177

0.0000, NaN, NaN

107.8334, 8.1427,

0.0000, NaN, NaN

121.3618, 7.9520,
10.4770

■ 29.9968, 7.7771,
3.9992

■ 29.9968, 7.7771,
3.9992

■ 27.3634, 11.5021,
4.8585

■ 32.8293, 4.1604,
3.2379

■ 24.9637, 15.2938,
5.8146

■ 35.8290, 0.6697,
2.5656

■ 22.8413, 19.0552,
6.8547

■ 38.9723, -2.6987,
1.9725

■ 21.0436, 22.6212,
7.9424

■ 42.2399, -5.9553,
1.4482

■ 19.6158, 25.7536,
9.0121

■ 45.6164, -9.1139,
0.9829

■ 18.5901, 28.1804,
9.9726

■ 49.0891, -12.1883,
0.5678

■ 17.8644, 30.0482,
10.6678

■ 52.6479, -15.1916,
0.1957

■ 17.7241, 30.4412,
10.7699

■ 56.2843, -18.1355,
-0.1399

■ 59.9914, -21.0302,
-0.4441

Harmonies

Analogous

The Analogous color harmony consists of three colors that are next to each other on the color wheel.



29.9975, 7.9016, -0.5141



29.9968, 7.7771, 3.9992



29.9975, 5.0371, 7.3149

Triad

The Triadic color harmony groups three colors that are evenly spaced from another and form a triangle on the color wheel.



29.9975, 7.7759, 3.9997



29.9975, -7.9909, 7.0823



29.9975, -3.7496, -8.2108

Complementary

The Complementary color scheme is a pair of colors which are on the opposite of each other on the color wheel.



29.9968, 7.7771, 3.9992



36.2123, -9.7981, 0.2596

Split Complementary

Split-complementary colors differ from the complementary color scheme. The scheme consists of three colors, the original color and two neighbors of the complement color.



29.9975, -7.7100, -5.4378



29.9968, 7.7771, 3.9992



29.9975, -10.0528, 3.6320

Square

The Square scheme is like the rectangle color scheme, but the four colors are evenly spaced on the color wheel.



29.9975, 7.7759, 3.9997



29.9975, -4.1553, 8.8938



29.9975, -9.9533, -0.9441



29.9975, 1.0392, -8.0706

Rectangle

The Rectangle color scheme consists of four colors that form a rectangle on the color wheel.



29.9968, 7.7771, 3.9992



29.9975, 2.1906, 8.6119



29.9975, -9.9533, -0.9441



29.9975, -5.2154, -7.5718

Sweetspot

The Sweet Spot groups the original color and five complimentary colors.



29.9975, 7.7759, 3.9997



47.8658, 0.9839, 3.4493



30.6153, 11.3372, -7.8748



23.3014, 0.7619, 1.7485



75.5302, -4.0301, 4.1037



25.2436, -1.3469, 1.3715

Same Dimension

The Same Dimension uses a secret algorithm to generate beautiful new colors.



29.9975, 7.7759, 3.9997



37.6690, 13.8454, 6.1340



33.1275, 1.6180, 7.8742



17.6628, 0.4912, 1.3042



19.5444, 33.5580, 11.9501



44.0623, 75.5450, 27.7977

Inverse Universe

The Inverse Universe completely reimagines the original color for something new.



29.9975, 7.7759, 3.9997



37.6690, 13.8454, 6.1340



32.6268, -3.9330, -5.2418



17.6628, 0.4912, 1.3042



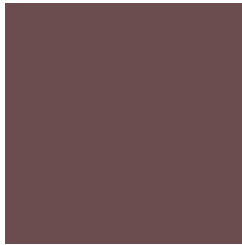
19.5444, 33.5580, 11.9501



44.0623, 75.5450, 27.7977

Previews

White Background



This preview shows how the HunterLab color 29.9968, 7.7771, 3.9992 looks on a white background.

Color Contrast Check

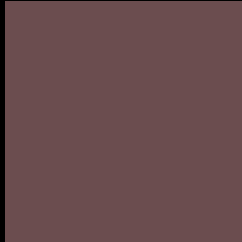
Large Text (above 18pt) WCAG AA ✓ Pass

Any Text WCAG AA ✓ Pass

Large Text (above 18pt) WCAG AAA ✓ Pass

Any Text WCAG AAA ✓ Pass

Black Background



This preview shows how the HunterLab color 29.9968, 7.7771, 3.9992 looks on a black background.

Color Contrast Check

Large Text (above 18pt) WCAG AA × Fail

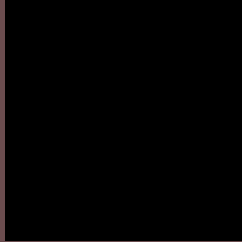
Any Text WCAG AA × Fail

Large Text (above 18pt) WCAG AAA × Fail

Any Text WCAG AAA × Fail

If you want to check with other color combinations, try the [Color Contrast Checker](#).

HunterLab 29.9968, 7.7771, 3.9992 Background



This preview shows how black text looks on a background with the HunterLab color 29.9968, 7.7771, 3.9992.

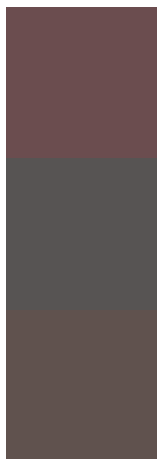


This preview shows how white text looks on a background with the HunterLab color 29.9968, 7.7771,

Color Blindness Simulation

Color vision deficiency is a very complex topic, and I could not describe the different causes any better than Wikipedia does, so if you want to learn more, you should check out their [article about color blindness](#).

Dichromacy



Original Color

29.9968, 7.7771, 3.9992

Protanopia

29.9857, -0.9107, 2.2798

Deuteranopia

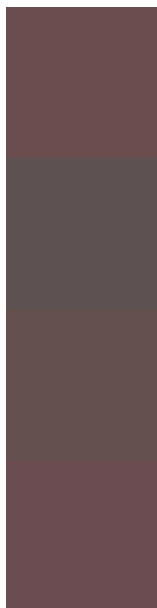
30.1188, 1.9127, 4.4039



Tritanopia

29.8394, 8.6234, 2.6766

Trichromacy



Original Color

29.9968, 7.7771, 3.9992

Protanomaly

29.7888, 2.2876, 2.5076

Deuteranomaly

29.9945, 4.0410, 4.3057

Tritanomaly

29.8140, 8.4932, 3.0391

Monochromacy



Original Color

29.9968, 7.7771, 3.9992

Achromatopsia

30.5056, -1.6277, 1.6574

Achromatomaly

30.3162, 1.5318, 2.7027

CSS Examples

Text

The CSS property to change the color of the text to HunterLab 29.9968, 7.7771, 3.9992 is called "color". The color property can be set on classes, ids or directly on the HTML element.

This example shows how text in the color `rgb(107, 77, 79)` looks like.

```
.text, #text, p{  
    color:rgb(107, 77, 79)  
}
```

If you want to add a text shadow in that color use the text-shadow property, you can generate a text shadow directly with our [CSS Text Shadow Generator](#).

Here you see how black text with a 4 pixel rgb(107, 77, 79) colored shadow looks like.

```
.shadow{ text-shadow: 4px 4px 2px rgb(107, 77, 79) }
```

Border

The CSS property to change the border of an element to HunterLab 29.9968, 7.7771, 3.9992 is called "border".

The border property can be set on classes, ids or directly on the HTML element.

This example shows the color as border, it can be applied via the CSS property "border" or "border-color".

```
.border, #border, table{ border:4px solid rgb(107, 77, 79) }
```


If only the border color should be changed use the property border-color.

```
.border{ border-color:rgb(107, 77, 79) }
```

If you want to add a box shadow in that color use:

Here you see how a box with a 4 pixel rgb(107, 77, 79) colored shadow looks like.

```
.boxshadow{ -moz-box-shadow:4px 4px 4px  
4px rgb(107, 77, 79); -webkit-box-  
shadow:4px 4px 4px 4px rgb(107, 77, 79);  
box-shadow:4px 4px 4px 4px rgb(107, 77,  
79) }
```

Background

The CSS property to change the background color of an element to HunterLab 29.9968, 7.7771, 3.9992 is called "background". The background property can be set on classes, ids or directly on the HTML element.

```
.background, #background, body{  
background: rgb(107, 77, 79) }
```

If only the background color should be changed can be used:

```
.background{ background-color: rgb(107, 77,  
79) }
```

This example shows the color as background, it is applied via the CSS property "background".

To optimize and compress your CSS code, you can use our [online CSS compressor and optimizer](#) based on csstidy. If you want to create a linear or radial gradient as background or border, check our [CSS Gradient Generator](#).

Hey! You found this booklet interesting? Support Converting Colors with the new Membership Option!

The pro membership hides all ads, plus gives you double the colors in the color bucket, and more awesome pro features!

[Learn more, Memberships starting at \\$2.50/m!](#)

**Follow me
on Twitter!**

@ConvertingColor