

Converting Colors

HunterLab(30.0187, 1.9760,
3.5421)

Have a look what the booklet for
HunterLab(30.0187, 1.9760, 3.5421)
contains.

HunterLab(30.0777, 1.8711, 3.6060)	3
<i>Conversions</i>	4
<i>Details</i>	6
<i>Harmonies</i>	12
<i>Previews</i>	24
<i>Color Blindness Simulation</i>	28
<i>CSS Examples</i>	31

Color

**HunterLab(30.0777, 1.8711,
3.6060)**

Conversions

Conversions Part 1

Format	Color
Hex	5F5250
RGB	95, 82, 80
RGB Percent	37%, 32%, 31%
CMY	0.6274, 0.6784, 0.6863
CMYK	0.00, 0.14, 0.16, 0.63
HSL	8°, 9%, 34%
HSV	8°, 16%, 37%
XYZ	9.1846, 9.0467, 8.8515
YIQ	85.6590, 8.3900, 2.1340

Conversions

Conversions Part 2

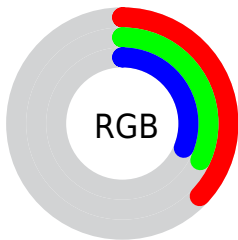
Format	Color
R_{YB}	95, 82, 80
Decimal	6246992
CIE _{Lab}	36.07, 4.99, 3.14
CIE _{LCh}	36, 5.894, 32.234
Yxy	9.0471, 0.3391, 0.3340
Android (android.graphics.Color)	4284437072 (0xFF5F5250)
YUV	85.6590, -2.7899, 8.1921
Hunter-Lab	30.0777, 1.8711, 3.6060

Details

The HunterLab color **30.0777, 1.8711, 3.6060** is a dark color, and the websafe version is hex **666666**. A complement of this color would be **32.1872, -4.8187, -0.1936**, and the grayscale version is **30.3891, -1.6215, 1.6511**.

A 20% lighter version of the original color is **48.9168, 1.7276, 4.9995**, and **14.5034, 2.2694, 2.1535** is the 20% darker color. If you saturate the color by 10%, you get **27.8360, 4.3458, 4.7094**, and if you desaturate by 10%, it is **32.4262, -0.4890, 2.4890**.

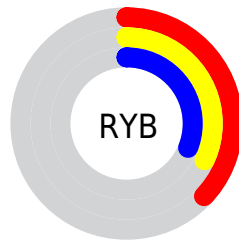
Distribution



Red (37%)

Green (32%)

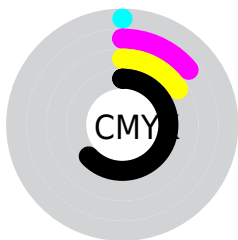
Blue (31%)



Red (37%)

Yellow (32%)

Blue (31%)

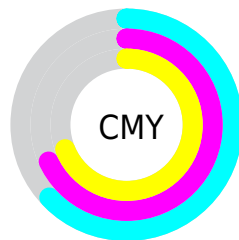


Cyan (0%)

Magenta (14%)

Yellow (16%)

Black (63%)



Cyan (63%)

Magenta (68%)

Yellow (69%)

Brightness & Saturation Gradients

These gradients show how the HunterLab color 30.0777, 1.8711, 3.6060 changes by changing the brightness by 10 percent. The first figure shows a shift by +10% for each color and the second figure -10%.

Similar to the brightness gradients but the following saturation gradients show a change of the HunterLab color 30.0777, 1.8711, 3.6060 by changing the saturation by 10% instead.

■ 30.0777, 1.8711,
3.6060

■ 30.0777, 1.8711,
3.6060

■ 135.5466, -1.5769,
10.7044

■ 21.8447, 1.9748,
2.9443

■ 48.9765, 1.4493,
5.0055

■ 14.5398, 1.9897,
2.3030

■ 59.5152, 1.1509,
5.7440

■ 8.2007, 2.2113,
2.0355

■ 70.7170, 0.8018,
6.5083

0.0000, NaN, NaN

■ 82.5450, 0.4064,
7.2983

0.0000, NaN, NaN

■ 94.9675, -0.0318,
8.1134

0.0000, NaN, NaN

107.9573, -0.5100,

0.0000, NaN, NaN

8.9531

0.0000, NaN, NaN

121.4907, -1.0257,
9.8170

■ 30.0777, 1.8711,
3.6060

■ 30.0777, 1.8711,
3.6060

■ 27.8360, 4.3458,
4.7094

■ 32.4262, -0.4890,
2.4890

■ 25.7148, 6.9425,
5.7874

■ 34.8666, -2.7410,
1.3631

■ 23.7339, 9.6550,
6.8244

■ 37.3886, -4.8970,
0.2327

■ 21.9155, 12.4614,
7.7961

■ 39.9834, -6.9686,
-0.9004

■ 20.2852, 15.3128,
8.6686

■ 42.6436, -8.9667,
-2.0353

■ 18.8705, 18.1236,
9.3982

■ 45.3631, -10.9011,
-3.1716

■ 17.6981, 20.7660,
9.9360

■ 48.1367, -12.7805,
-4.3094

■ 16.7827, 23.0520,
10.3391

■ 50.9599, -14.6128,
-5.4489

■ 16.4700, 23.8408,
10.5661

■ 53.8290, -16.4045,
-6.5905

Harmonies

Analogous

The Analogous color harmony consists of three colors that are next to each other on the color wheel.



30.0784, 2.5170, 1.7860



30.0777, 1.8711, 3.6060



30.0784, 0.2893, 4.8285

Triad

The Triadic color harmony groups three colors that are evenly spaced from another and form a triangle on the color wheel.



30.0784, 1.8702, 3.6065



30.0784, -5.0818, 3.3649



30.0784, -1.4496, -2.4403

Complementary

The Complementary color scheme is a pair of colors which are on the opposite of each other on the color wheel.



30.0777, 1.8711, 3.6060



32.1872, -4.8187, -0.1936

Split Complementary

Split-complementary colors differ from the complementary color scheme. The scheme consists of three colors, the original color and two neighbors of the complement color.



30.0784, -3.4566, -1.9471



30.0777, 1.8711, 3.6060



30.0784, -5.5192, 1.4878

Square

The Square scheme is like the rectangle color scheme, but the four colors are evenly spaced on the color wheel.



30.0784, 1.8702, 3.6065



30.0784, -3.7209, 4.6958



30.0784, -4.9321, -0.4748



30.0784, 0.5680, -1.7806

Rectangle

The Rectangle color scheme consists of four colors that form a rectangle on the color wheel.



30.0777, 1.8711, 3.6060



30.0784, -1.0614, 5.1854



30.0784, -4.9321, -0.4748



30.0784, -2.1478, -2.4038

Sweetspot

The Sweet Spot groups the original color and five complimentary colors.



30.0784, 1.8702, 3.6065



42.6374, -0.8328, 3.1632



29.9344, 4.6446, -1.9851



20.8017, -0.3408, 1.5810



71.2094, -3.7996, 3.8689



21.6712, -1.1563, 1.1774

Same Dimension

The Same Dimension uses a secret algorithm to generate beautiful new colors.



30.0784, 1.8702, 3.6065



38.2387, 3.6519, 5.2674



32.0007, -1.4399, 5.6318



16.2433, 0.1194, 1.4548



19.4905, 28.8827, 12.5156



44.1648, 69.6253, 28.4331

Inverse Universe

The Inverse Universe completely reimagines the original color for something new.



32.1872, -4.8187, -0.1936



41.6415, -7.1541, -0.8673



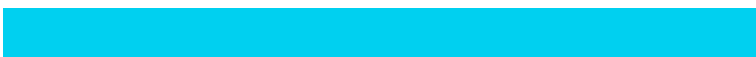
30.1792, -1.5810, -2.7012



16.8575, -1.8261, 0.3485



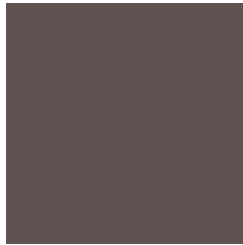
31.2498, -13.3812, -10.1732



71.5847, -30.0976, -24.5026

Previews

White Background



This preview shows how the HunterLab color 30.0777, 1.8711, 3.6060 looks on a white background.

Color Contrast Check

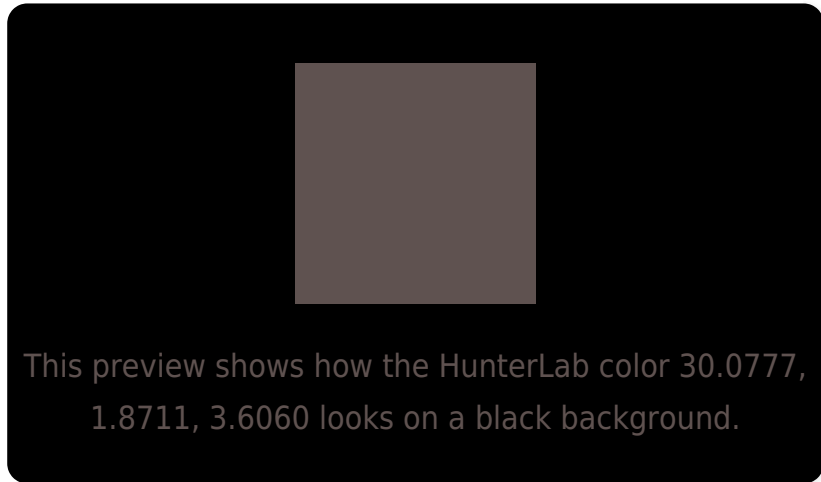
Large Text (above 18pt) WCAG AA ✓ Pass

Any Text WCAG AA ✓ Pass

Large Text (above 18pt) WCAG AAA ✓ Pass

Any Text WCAG AAA ✓ Pass

Black Background



Color Contrast Check

Large Text (above 18pt) WCAG AA × Fail

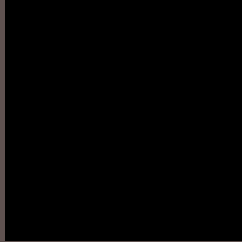
Any Text WCAG AA × Fail

Large Text (above 18pt) WCAG AAA × Fail

Any Text WCAG AAA × Fail

If you want to check with other color combinations, try the [Color Contrast Checker](#).

HunterLab 30.0777, 1.8711, 3.6060 Background



This preview shows how black text looks on a background with the HunterLab color 30.0777, 1.8711, 3.6060.



This preview shows how white text looks on a background with the HunterLab color 30.0777, 1.8711,

Color Blindness Simulation

Color vision deficiency is a very complex topic, and I could not describe the different causes any better than Wikipedia does, so if you want to learn more, you should check out their [article about color blindness](#).

Dichromacy



Original Color

30.0777, 1.8711, 3.6060

Protanopia

30.1949, -1.6219, 3.2919

Deuteranopia

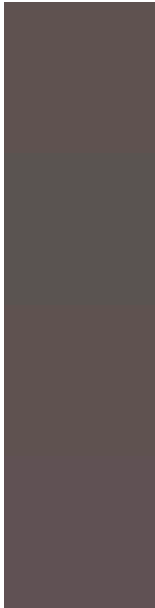
30.0777, 1.8711, 3.6060



Tritanopia

30.0995, 3.5847, 0.8485

Trichromacy



Original Color

30.0777, 1.8711, 3.6060

Protanomaly

30.1801, -0.3420, 3.2977

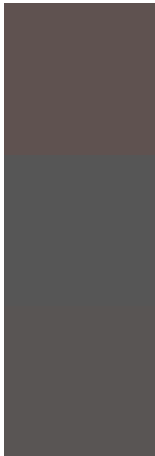
Deuteranomaly

30.0777, 1.8711, 3.6060

Tritanomaly

30.0196, 3.1603, 1.9876

Monochromacy



Original Color

30.0777, 1.8711, 3.6060

Achromatopsia

30.5056, -1.6277, 1.6574

Achromatomaly

30.4318, -0.6499, 2.3992

CSS Examples

Text

The CSS property to change the color of the text to HunterLab 30.0777, 1.8711, 3.6060 is called "color". The color property can be set on classes, ids or directly on the HTML element.

This example shows how text in the color `rgb(95, 82, 80)` looks like.

```
.text, #text, p{  
    color:rgb(95, 82, 80)  
}
```

If you want to add a text shadow in that color use the text-shadow property, you can generate a text shadow directly with our [CSS Text Shadow Generator](#).

Here you see how black text with a 4 pixel rgb(95, 82, 80) colored shadow looks like.

```
.shadow{ text-shadow: 4px 4px 2px rgb(95, 82, 80) }
```

Border

The CSS property to change the border of an element to HunterLab 30.0777, 1.8711, 3.6060 is called "border". The border property can be set on classes, ids or directly on the HTML element.

This example shows the color as border, it can be applied via the CSS property "border" or "border-color".

```
.border, #border, table{ border:4px solid rgb(95, 82, 80) }
```


If only the border color should be changed use the property `border-color`.

```
.border{ border-color:rgb(95, 82, 80) }
```

If you want to add a box shadow in that color use:

Here you see how a box with a 4 pixel `rgb(95, 82, 80)` colored shadow looks like.

```
.boxshadow{ -moz-box-shadow:4px 4px 4px  
4px rgb(95, 82, 80); -webkit-box-  
shadow:4px 4px 4px 4px rgb(95, 82, 80);  
box-shadow:4px 4px 4px 4px rgb(95, 82, 80)  
}
```

Background

The CSS property to change the background color of an element to HunterLab 30.0777, 1.8711, 3.6060 is called "background". The background property can be set on classes, ids or directly on the HTML element.

```
.background, #background, body{  
background: rgb(95, 82, 80) }
```

If only the background color should be changed can be used:

```
.background{ background-color: rgb(95, 82,  
80) }
```

This example shows the color as background, it is applied via the CSS property "background".

To optimize and compress your CSS code, you can use our [online CSS compressor and optimizer](#) based on csstidy. If you want to create a linear or radial gradient as background or border, check our [CSS Gradient Generator](#).

Hey! You found this booklet interesting? Support Converting Colors with the new Membership Option!

The pro membership hides all ads, plus gives you double the colors in the color bucket, and more awesome pro features!

[Learn more, Memberships starting at \\$2.50/m!](#)

**Follow me
on Twitter!**

@ConvertingColor