

# Converting Colors

HunterLab(30.1151, 5.8444,  
3.3244)

Have a look what the booklet for  
HunterLab(30.1151, 5.8444, 3.3244)  
contains.

<b>HunterLab(30.1158, 5.8259, 3.3334)</b> .....	3
<b><i>Conversions</i></b> .....	4
<b><i>Details</i></b> .....	6
<b><i>Harmonies</i></b> .....	12
<b><i>Previews</i></b> .....	24
<b><i>Color Blindness Simulation</i></b> .....	28
<b><i>CSS Examples</i></b> .....	31

# Color

**HunterLab(30.1158, 5.8259,  
3.3334)**

# Conversions

## Conversions Part 1

<b>Format</b>	<b>Color</b>
Hex	674F51
RGB	103, 79, 81
RGB Percent	40%, 31%, 32%
CMY	0.5961, 0.6902, 0.6824
CMYK	0.00, 0.23, 0.21, 0.60
HSL	355°, 13%, 36%
HSV	355°, 23%, 40%
XYZ	9.8747, 9.0696, 9.0148
YIQ	86.4040, 13.6620, 5.7100

# Conversions

## Conversions Part 2

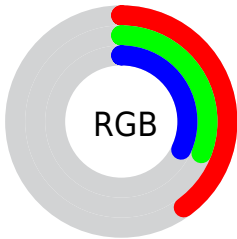
<b>Format</b>	<b>Color</b>
<b>R<sub>YB</sub></b>	103, 79, 81
Decimal	6770513
CIE <sub>Lab</sub>	36.12, 10.40, 2.69
CIE <sub>LCh</sub>	36, 10.747, 14.498
Yxy	9.0700, 0.3532, 0.3244
Android (android.graphics.Color)	4284960593 (0xFF674F51)
YUV	86.4040, -2.6642, 14.5547
Hunter-Lab	30.1158, 5.8259, 3.3334

# Details

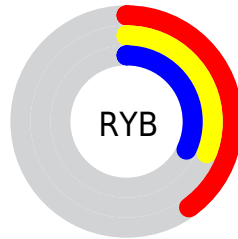
The HunterLab color **30.1158, 5.8259, 3.3334** is a dark color, and the websafe version is hex **666666**. A complement of this color would be **35.0750, -8.3324, 0.6544**, and the grayscale version is **30.6600, -1.6359, 1.6658**.

A 20% lighter version of the original color is **48.9082, 5.9264, 4.6386**, and **14.4563, 5.3419, 1.8230** is the 20% darker color. If you saturate the color by 10%, you get **27.5054, 9.3556, 4.0592**, and if you desaturate by 10%, it is **32.9007, 2.4046, 2.7053**.

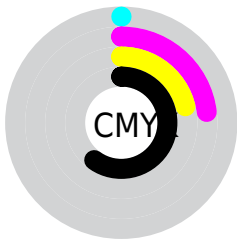
# Distribution



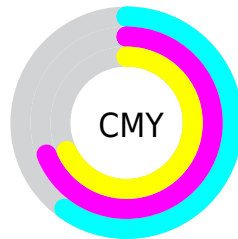
- Red (40%)
- Green (31%)
- Blue (32%)



- Red (40%)
- Yellow (31%)
- Blue (32%)



- Cyan (0%)
- Magenta (23%)
- Yellow (21%)
- Black (60%)



- Cyan (60%)
- Magenta (69%)
- Yellow (68%)

# Brightness & Saturation Gradients

These gradients show how the HunterLab color 30.1158, 5.8259, 3.3334 changes by changing the brightness by 10 percent. The first figure shows a shift by +10% for each color and the second figure -10%.

Similar to the brightness gradients but the following saturation gradients show a change of the HunterLab color 30.1158, 5.8259, 3.3334 by changing the saturation by 10% instead.



■ 30.1158, 5.8259,  
3.3334

■ 30.1158, 5.8259,  
3.3334

■ 135.6095, 4.6807,  
10.2338

■ 21.8790, 5.5864,  
2.7034

■ 49.0214, 6.0157,  
4.6785

■ 14.5697, 5.2244,  
2.0985

■ 59.5630, 5.9947,  
5.3929

■ 8.2303, 5.0962,  
1.8031

■ 70.7677, 5.9082,  
6.1347

0.0000, NaN, NaN

0.0000, NaN, NaN

■ 82.5984, 5.7627,  
6.9034

0.0000, NaN, NaN

■ 95.0234, 5.5633,  
7.6983

0.0000, NaN, NaN

108.0157, 5.3143,

0.0000, NaN, NaN

121.5514, 5.0191,  
9.3641

■ 30.1158, 5.8259,  
3.3334

■ 30.1158, 5.8259,  
3.3334

■ 27.5054, 9.3556,  
4.0592

■ 32.9007, 2.4046,  
2.7053

■ 25.0989, 12.9696,  
4.8876

■ 35.8327, -0.8997,  
2.1629

■ 22.9345, 16.6013,  
5.8170

■ 38.8917, -4.0944,  
1.6955

■ 21.0555, 20.1279,  
6.8282

■ 42.0616, -7.1908,  
1.2925

■ 19.5063, 23.3570,  
7.8772

■ 45.3289, -10.2017,  
0.9446

■ 18.3253, 26.0396,  
8.8905

■ 48.6829, -13.1397,  
0.6435

■ 17.5147, 27.9910,  
9.7648

■ 52.1149, -16.0165,  
0.3824

■ 17.0363, 29.2856,  
10.1534

■ 55.6175, -18.8423,  
0.1556

■ 59.1846, -21.6259,  
-0.0417

# Harmonies

## Analogous

The Analogous color harmony consists of three colors that are next to each other on the color wheel.



30.1165, 5.7885, -0.2853



30.1158, 5.8259, 3.3334



30.1165, 3.8024, 6.1301

# Triad

The Triadic color harmony groups three colors that are evenly spaced from another and form a triangle on the color wheel.



30.1165, 5.8248, 3.3339



30.1165, -6.5778, 6.2025



30.1165, -3.5435, -5.8870

# Complementary

The Complementary color scheme is a pair of colors which are on the opposite of each other on the color wheel.



30.1158, 5.8259, 3.3334



35.0750, -8.3324, 0.6544

# Split Complementary

Split-complementary colors differ from the complementary color scheme. The scheme consists of three colors, the original color and two neighbors of the complement color.



30.1165, -6.6625, -3.6711



30.1158, 5.8259, 3.3334



30.1165, -8.3541, 3.4447

# Square

The Square scheme is like the rectangle color scheme, but the four colors are evenly spaced on the color wheel.



30.1165, 5.8248, 3.3339



30.1165, -3.4225, 7.6411



30.1165, -8.3843, -0.1599



30.1165, 0.2493, -5.9264



# Rectangle

The Rectangle color scheme consists of four colors that form a rectangle on the color wheel.



30.1158, 5.8259, 3.3334



30.1165, 1.6141, 7.2802



30.1165, -8.3843, -0.1599



30.1165, -4.7011, -5.3608

# Sweetspot

The Sweet Spot groups the original color and five complimentary colors.



30.1165, 5.8248, 3.3339



46.3945, 0.5055, 3.1650



30.5587, 8.5047, -5.9176



22.8487, 0.3249, 1.5755



74.4461, -3.9723, 4.0448



24.3420, -1.2988, 1.3225



# Same Dimension

The Same Dimension uses a secret algorithm to generate beautiful new colors.



30.1165, 5.8248, 3.3339



38.3390, 10.3871, 4.9805



32.5471, 1.0529, 6.5978



16.8814, 0.4648, 1.2140



19.1020, 32.8223, 11.4936



43.5576, 74.7110, 27.2363



# Inverse Universe

The Inverse Universe completely reimagines the original color for something new.



30.1165, 5.8248, 3.3339



38.3390, 10.3871, 4.9805



32.3583, -3.7398, -3.6385



16.8814, 0.4648, 1.2140



19.1020, 32.8223, 11.4936

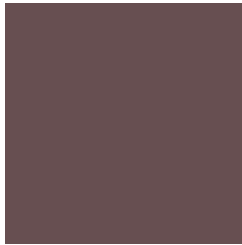


43.5576, 74.7110, 27.2363



# Previews

## White Background



This preview shows how the HunterLab color 30.1158, 5.8259, 3.3334 looks on a white background.

## Color Contrast Check

Large Text (above 18pt) WCAG AA ✓ Pass

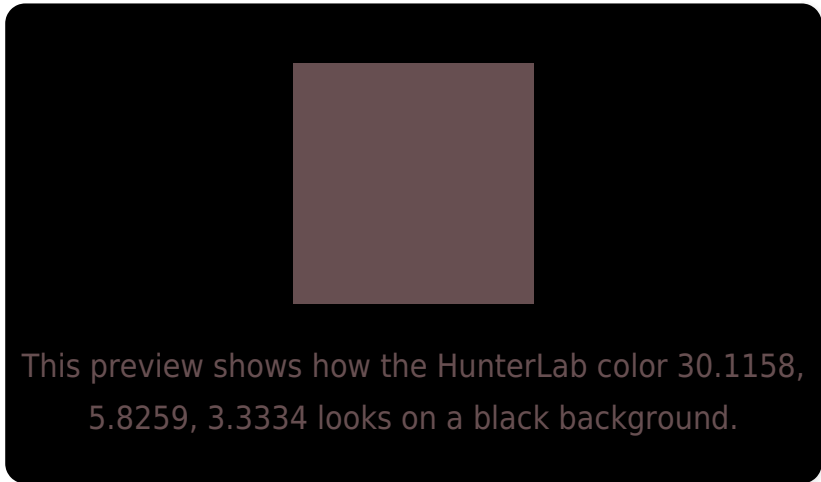
Any Text WCAG AA ✓ Pass

Large Text (above 18pt) WCAG AAA ✓ Pass

Any Text WCAG AAA ✓ Pass



# Black Background



## Color Contrast Check

Large Text (above 18pt) WCAG AA × Fail

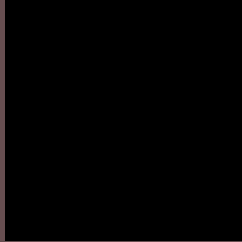
Any Text WCAG AA × Fail

Large Text (above 18pt) WCAG AAA × Fail

Any Text WCAG AAA × Fail

If you want to check with other color combinations, try the [Color Contrast Checker](#).

## HunterLab 30.1158, 5.8259, 3.3334 Background



This preview shows how black text looks on a background with the HunterLab color 30.1158, 5.8259, 3.3334.



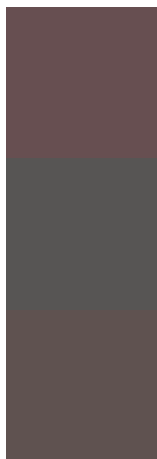
This preview shows how white text looks on a background with the HunterLab color 30.1158, 5.8259,



# Color Blindness Simulation

Color vision deficiency is a very complex topic, and I could not describe the different causes any better than Wikipedia does, so if you want to learn more, you should check out their [article about color blindness](#).

## Dichromacy



### Original Color

30.1158, 5.8259, 3.3334

### Protanopia

30.2710, -1.2055, 2.2036

### Deuteranopia

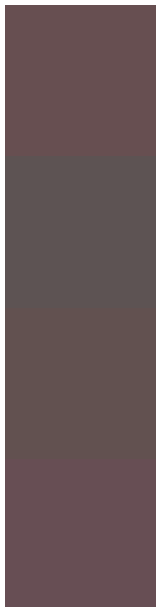
30.0777, 1.8711, 3.6060



## Tritanopia

29.9804, 6.8209, 1.5968

# Trichromacy



## Original Color

30.1158, 5.8259, 3.3334

## Protanomaly

30.2295, 1.2387, 2.5982

## Deuteranomaly

30.1010, 3.2280, 3.6557

## Tritanomaly

29.9540, 6.6840, 1.9726

# Monochromacy



## Original Color

30.1158, 5.8259, 3.3334

## Achromatopsia

30.5056, -1.6277, 1.6574

## Achromatomaly

30.1694, 1.0867, 2.1258

# CSS Examples

## Text

The CSS property to change the color of the text to HunterLab 30.1158, 5.8259, 3.3334 is called "color". The color property can be set on classes, ids or directly on the HTML element.

This example shows how text in the color `rgb(103, 79, 81)` looks like.

```
.text, #text, p{  
    color:rgb(103, 79, 81)  
}
```

If you want to add a text shadow in that color use the text-shadow property, you can generate a text shadow directly with our [CSS Text Shadow Generator](#).

Here you see how black text with a 4 pixel rgb(103, 79, 81) colored shadow looks like.

```
.shadow{ text-shadow: 4px 4px 2px rgb(103, 79, 81) }
```

## Border

The CSS property to change the border of an element to HunterLab 30.1158, 5.8259, 3.3334 is called "border".

The border property can be set on classes, ids or directly on the HTML element.

This example shows the color as border, it can be applied via the CSS property "border" or "border-color".

```
.border, #border, table{ border:4px solid rgb(103, 79, 81) }
```



If only the border color should be changed use the property border-color.

```
.border{ border-color:rgb(103, 79, 81) }
```

If you want to add a box shadow in that color use:

Here you see how a box with a 4 pixel rgb(103, 79, 81) colored shadow looks like.

```
.boxshadow{ -moz-box-shadow:4px 4px 4px  
4px rgb(103, 79, 81); -webkit-box-  
shadow:4px 4px 4px 4px rgb(103, 79, 81);  
box-shadow:4px 4px 4px 4px rgb(103, 79,  
81) }
```

# Background

The CSS property to change the background color of an element to HunterLab 30.1158, 5.8259, 3.3334 is called "background". The background property can be set on classes, ids or directly on the HTML element.

```
.background, #background, body{  
background: rgb(103, 79, 81) }
```

If only the background color should be changed can be used:

```
.background{ background-color: rgb(103, 79,  
81) }
```

This example shows the color as background, it is applied via the CSS property "background".

To optimize and compress your CSS code, you can use our [online CSS compressor and optimizer](#) based on csstidy. If you want to create a linear or radial gradient as background or border, check our [CSS Gradient Generator](#).

Hey! You found this booklet interesting? Support Converting Colors with the new Membership Option!

The pro membership hides all ads, plus gives you double the colors in the color bucket, and more awesome pro features!

**[Learn more, Memberships starting at \\$2.50/m!](#)**

**Follow me  
on Twitter!**

@ConvertingColor