

Converting Colors

HunterLab(30.3925, 1.7629,
4.8730)

Have a look what the booklet for
HunterLab(30.3925, 1.7629, 4.8730)
contains.

HunterLab(30.4597, 1.7705, 4.7703)	3
<i>Conversions</i>	4
<i>Details</i>	6
<i>Harmonies</i>	12
<i>Previews</i>	24
<i>Color Blindness Simulation</i>	28
<i>CSS Examples</i>	31

Color

**HunterLab(30.4597, 1.7705,
4.7703)**

Conversions

Conversions Part 1

Format	Color
Hex	61534E
RGB	97, 83, 78
RGB Percent	38%, 33%, 31%
CMY	0.6196, 0.6745, 0.6941
CMYK	0.00, 0.14, 0.20, 0.62
HSL	16°, 11%, 34%
HSV	16°, 20%, 38%
XYZ	9.3981, 9.2779, 8.5032
YIQ	86.6160, 9.9490, 1.4130

Conversions

Conversions Part 2

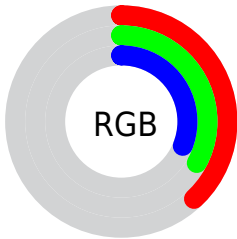
Format	Color
R_{YB}	97, 85, 78
Decimal	6378318
CIE Lab	36.51, 4.85, 5.05
CIE LCh	37, 7.008, 46.158
Yxy	9.2784, 0.3458, 0.3414
Android (android.graphics.Color)	4284568398 (0xFF61534E)
YUV	86.6160, -4.2477, 9.1068
Hunter-Lab	30.4597, 1.7705, 4.7703

Details

The HunterLab color $[30.4597, 1.7705, 4.7703]$ is a dark color, and the websafe version is hex 666666 . A complement of this color would be $[31.8383, -4.5492, -1.5215]$, and the grayscale version is $[30.7442, -1.6404, 1.6704]$.

A 20% lighter version of the original color is $[49.3262, 1.5963, 6.2880]$, and $[14.7642, 1.9362, 3.0542]$ is the 20% darker color. If you saturate the color by 10%, you get $[28.4807, 3.7883, 6.1308]$, and if you desaturate by 10%, it is $[32.5246, -0.1289, 3.3273]$.

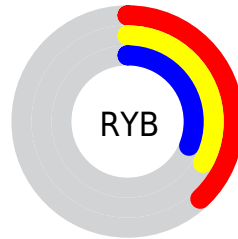
Distribution



 Red (38%)

 Green (33%)

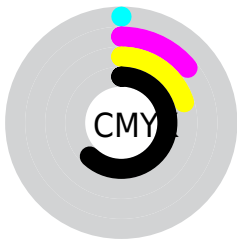
 Blue (31%)



 Red (38%)

 Yellow (33%)

 Blue (31%)

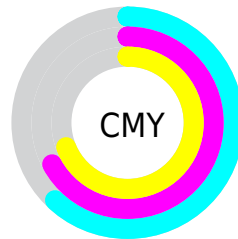



 Cyan (0%)

 Magenta (14%)

 Yellow (20%)

 Black (62%)



 Cyan (62%)

 Magenta (67%)

 Yellow (69%)

Brightness & Saturation Gradients

These gradients show how the HunterLab color 30.4597, 1.7705, 4.7703 changes by changing the brightness by 10 percent. The first figure shows a shift by +10% for each color and the second figure -10%.

Similar to the brightness gradients but the following saturation gradients show a change of the HunterLab color 30.4597, 1.7705, 4.7703 by changing the saturation by 10% instead.

■ 30.4597, 1.7705,
4.7703

■ 30.4597, 1.7705,
4.7703

136.1767, -1.7530,
12.7266

■ 22.1882, 1.8862,
3.9712

■ 49.4257, 1.3279,
6.4058

■ 14.8400, 1.9151,
3.1724

■ 59.9944, 1.0202,
7.2487

■ 8.4925, 2.0370,
2.9293

■ 71.2246, 0.6625,
8.1109

0.0000, NaN, NaN

0.0000, NaN, NaN

■ 83.0793, 0.2590,
8.9930

0.0000, NaN, NaN

■ 95.5273, -0.1869,
9.8956

0.0000, NaN, NaN

108.5415, -0.6724,

0.0000, NaN, NaN

10.8188

0.0000, NaN, NaN

122.0983, -1.1951,
11.7625

■ 30.4597, 1.7705,
4.7703

■ 30.4597, 1.7705,
4.7703

■ 28.4807, 3.7883,
6.1308

■ 32.5246, -0.1289,
3.3273

■ 26.5964, 5.9344,
7.3892

■ 34.6641, -1.9165,
1.8148

■ 24.8199, 8.2099,
8.5227

■ 36.8711, -3.6040,
0.2445

■ 23.1658, 10.6077,
9.5031

■ 39.1390, -5.2016,
-1.3752

■ 21.6503, 13.1068,
10.2974

■ 41.4622, -6.7194,
-3.0374

■ 20.2909, 15.6659,
10.8707

■ 43.8358, -8.1663,
-4.7370

■ 19.1051, 18.2181,
11.1913

■ 46.2558, -9.5507,
-6.4697

■ 18.0932, 20.6014,
11.4719

■ 48.7185, -10.8797,
-8.2323

■ 18.0550, 20.6932,
11.4877

■ 51.2210, -12.1598,
-10.0221

Harmonies

Analogous

The Analogous color harmony consists of three colors that are next to each other on the color wheel.



30.4604, 3.1217, 2.9015



30.4597, 1.7705, 4.7703



30.4604, -0.4701, 5.7665

Triad

The Triadic color harmony groups three colors that are evenly spaced from another and form a triangle on the color wheel.



30.4604, 1.7695, 4.7708



30.4604, -6.1486, 2.7303



30.4604, -0.2797, -3.0616

Complementary

The Complementary color scheme is a pair of colors which are on the opposite of each other on the color wheel.



30.4597, 1.7705, 4.7703



31.8383, -4.5492, -1.5215

Split Complementary

Split-complementary colors differ from the complementary color scheme. The scheme consists of three colors, the original color and two neighbors of the complement color.



30.4604, -2.7668, -3.1167



30.4597, 1.7705, 4.7703



30.4604, -6.1013, 0.3599

Square

The Square scheme is like the rectangle color scheme, but the four colors are evenly spaced on the color wheel.



30.4604, 1.7695, 4.7708



30.4604, -5.0120, 4.6542



30.4604, -4.8808, -1.8224



30.4604, 1.9128, -1.6772

Rectangle

The Rectangle color scheme consists of four colors that form a rectangle on the color wheel.



30.4597, 1.7705, 4.7703



30.4604, -2.1401, 5.8572



30.4604, -4.8808, -1.8224



30.4604, -1.1103, -3.2398

Sweetspot

The Sweet Spot groups the original color and five complimentary colors.



30.4604, 1.7695, 4.7708



43.5278, -0.9831, 3.6898



29.6097, 6.0375, -2.0386



21.6351, -0.4436, 1.8771



72.2857, -3.8570, 3.9274



22.5557, -1.2035, 1.2255

Same Dimension

The Same Dimension uses a secret algorithm to generate beautiful new colors.



30.4604, 1.7695, 4.7708



38.5406, 3.6471, 7.1711



32.8469, -2.3032, 7.1894



16.3888, -0.1302, 1.6161



20.8884, 24.6327, 13.3026



46.9462, 60.8714, 29.9937

Inverse Universe

The Inverse Universe completely reimagines the original color for something new.



31.8383, -4.5492, -1.5215



40.7991, -6.7278, -3.1486



29.3789, -0.5356, -4.7297



16.7060, -1.5816, 0.1686



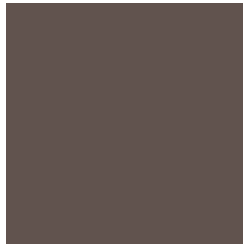
27.0354, -7.6762, -17.2212



61.2845, -16.0068, -42.0462

Previews

White Background



This preview shows how the HunterLab color 30.4597, 1.7705, 4.7703 looks on a white background.

Color Contrast Check

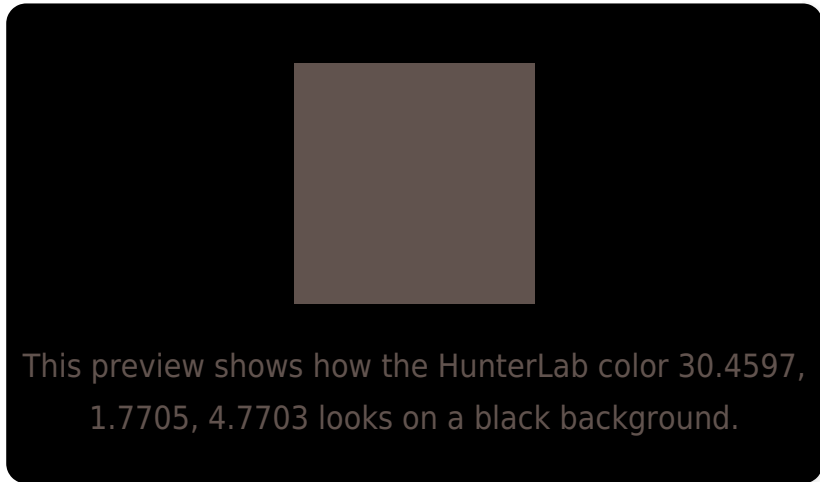
Large Text (above 18pt) WCAG AA ✓ Pass

Any Text WCAG AA ✓ Pass

Large Text (above 18pt) WCAG AAA ✓ Pass

Any Text WCAG AAA ✓ Pass

Black Background



Color Contrast Check

Large Text (above 18pt) WCAG AA × Fail

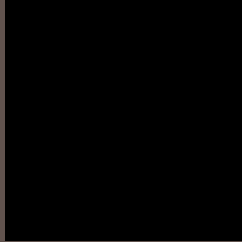
Any Text WCAG AA × Fail

Large Text (above 18pt) WCAG AAA × Fail

Any Text WCAG AAA × Fail

If you want to check with other color combinations, try the [Color Contrast Checker](#).

HunterLab 30.4597, 1.7705, 4.7703 Background



This preview shows how black text looks on a background with the HunterLab color 30.4597, 1.7705, 4.7703.



This preview shows how white text looks on a background with the HunterLab color 30.4597, 1.7705,

Color Blindness Simulation

Color vision deficiency is a very complex topic, and I could not describe the different causes any better than Wikipedia does, so if you want to learn more, you should check out their [article about color blindness](#).

Dichromacy



Original Color

30.4597, 1.7705, 4.7703

Protanopia

30.5679, -1.7625, 4.4573

Deuteranopia

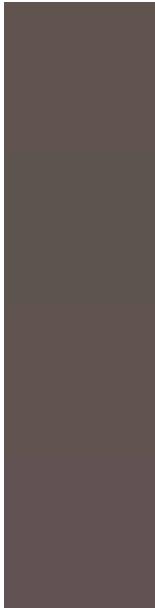
30.4597, 1.7705, 4.7703



Tritanopia

30.5546, 3.8730, 0.9801

Trichromacy



Original Color

30.4597, 1.7705, 4.7703

Protanomaly

30.5562, -0.4693, 4.4673

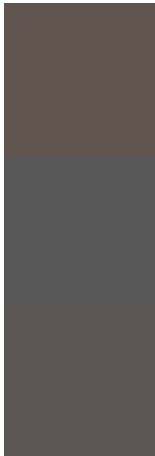
Deuteranomaly

30.4597, 1.7705, 4.7703

Tritanomaly

30.4489, 3.3120, 2.4883

Monochromacy



Original Color

30.4597, 1.7705, 4.7703

Achromatopsia

30.8719, -1.6472, 1.6773

Achromatomaly

30.8542, -0.5250, 2.8854

CSS Examples

Text

The CSS property to change the color of the text to HunterLab 30.4597, 1.7705, 4.7703 is called "color". The color property can be set on classes, ids or directly on the HTML element.

This example shows how text in the color `rgb(97, 83, 78)` looks like.

```
.text, #text, p{  
    color:rgb(97, 83, 78)  
}
```

If you want to add a text shadow in that color use the text-shadow property, you can generate a text shadow directly with our [CSS Text Shadow Generator](#).

Here you see how black text with a 4 pixel rgb(97, 83, 78) colored shadow looks like.

```
.shadow{ text-shadow: 4px 4px 2px rgb(97, 83, 78) }
```

Border

The CSS property to change the border of an element to HunterLab 30.4597, 1.7705, 4.7703 is called "border". The border property can be set on classes, ids or directly on the HTML element.

This example shows the color as border, it can be applied via the CSS property "border" or "border-color".

```
.border, #border, table{ border:4px solid rgb(97, 83, 78) }
```


If only the border color should be changed use the property border-color.

```
.border{ border-color:rgb(97, 83, 78) }
```

If you want to add a box shadow in that color use:

Here you see how a box with a 4 pixel rgb(97, 83, 78) colored shadow looks like.

```
.boxshadow{ -moz-box-shadow:4px 4px 4px  
4px rgb(97, 83, 78); -webkit-box-  
shadow:4px 4px 4px 4px rgb(97, 83, 78);  
box-shadow:4px 4px 4px 4px rgb(97, 83, 78)  
}
```

Background

The CSS property to change the background color of an element to HunterLab 30.4597, 1.7705, 4.7703 is called "background". The background property can be set on classes, ids or directly on the HTML element.

```
.background, #background, body{  
background: rgb(97, 83, 78) }
```

If only the background color should be changed can be used:

```
.background{ background-color: rgb(97, 83,  
78) }
```

This example shows the color as background, it is applied via the CSS property "background".

To optimize and compress your CSS code, you can use our [online CSS compressor and optimizer](#) based on csstidy. If you want to create a linear or radial gradient as background or border, check our [CSS Gradient Generator](#).

Hey! You found this booklet interesting? Support Converting Colors with the new Membership Option!

The pro membership hides all ads, plus gives you double the colors in the color bucket, and more awesome pro features!

[Learn more, Memberships starting at \\$2.50/m!](#)

**Follow me
on Twitter!**

@ConvertingColor