

Converting Colors

HunterLab(30.4159, 2.1037,
4.1729)

Have a look what the booklet for
HunterLab(30.4159, 2.1037, 4.1729)
contains.

HunterLab(30.5075, 2.0268, 4.0844)	3
<i>Conversions</i>	4
<i>Details</i>	6
<i>Harmonies</i>	12
<i>Previews</i>	24
<i>Color Blindness Simulation</i>	28
<i>CSS Examples</i>	31

Color

**HunterLab(30.5075, 2.0268,
4.0844)**

Conversions

Conversions Part 1

Format	Color
Hex	615350
RGB	97, 83, 80
RGB Percent	38%, 33%, 31%
CMY	0.6196, 0.6745, 0.6863
CMYK	0.00, 0.14, 0.18, 0.62
HSL	11°, 10%, 35%
HSV	11°, 18%, 38%
XYZ	9.4710, 9.3071, 8.8867
YIQ	86.8440, 9.3070, 2.0350

Conversions

Conversions Part 2

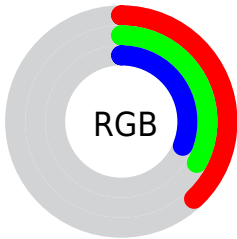
Format	Color
RYB	97, 84, 80
Decimal	6378320
CIELab	36.57, 5.21, 3.88
CIElCh	37, 6.500, 36.679
Yxy	9.3075, 0.3423, 0.3364
Android (android.graphics.Color)	4284568400 (0xFF615350)
YUV	86.8440, -3.3741, 8.9068
Hunter-Lab	30.5075, 2.0268, 4.0844

Details

The HunterLab color $[30.5075, 2.0268, 4.0844]$ is a dark color, and the websafe version is hex 666666 . A complement of this color would be $[32.5172, -4.9285, -0.6701]$, and the grayscale version is $[30.8248, -1.6447, 1.6748]$.

A 20% lighter version of the original color is $[49.3796, 1.8839, 5.5233]$, and $[14.8044, 2.1487, 2.4756]$ is the 20% darker color. If you saturate the color by 10%, you get $[28.3225, 4.3964, 5.2949]$, and if you desaturate by 10%, it is $[32.7947, -0.2247, 2.8368]$.

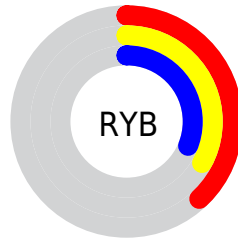
Distribution



 Red (38%)

 Green (33%)

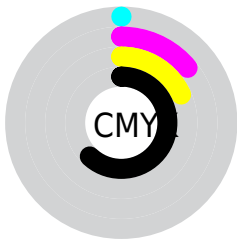
 Blue (31%)



 Red (38%)

 Yellow (33%)

 Blue (31%)

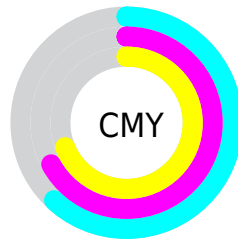


 Cyan (0%)

 Magenta (14%)

 Yellow (18%)

 Black (62%)



 Cyan (62%)

 Magenta (67%)

 Yellow (69%)

Brightness & Saturation Gradients

These gradients show how the HunterLab color 30.5075, 2.0268, 4.0844 changes by changing the brightness by 10 percent. The first figure shows a shift by +10% for each color and the second figure -10%.

Similar to the brightness gradients but the following saturation gradients show a change of the HunterLab color 30.5075, 2.0268, 4.0844 by changing the saturation by 10% instead.

■ 30.5075, 2.0268,
4.0844

■ 30.5075, 2.0268,
4.0844

■ 136.2555, -1.3442,
11.5196

■ 22.2313, 2.1196,
3.3694

■ 49.4819, 1.6249,
5.5760

■ 14.8776, 2.1231,
2.6675

■ 60.0543, 1.3356,
6.3554

■ 8.5282, 2.2082,
2.3514

■ 71.2880, 0.9953,
7.1581

0.0000, NaN, NaN

0.0000, NaN, NaN

■ 83.1461, 0.6083,
7.9843

0.0000, NaN, NaN

■ 95.5972, 0.1782,
8.8339

0.0000, NaN, NaN

108.6145, -0.2922,

0.0000, NaN, NaN

122.1742, -0.8004,
10.6018

■ 30.5075, 2.0268,
4.0844

■ 30.5075, 2.0268,
4.0844

■ 28.3225, 4.3964,
5.2949

■ 32.7947, -0.2247,
2.8368

■ 26.2520, 6.8923,
6.4530

■ 35.1699, -2.3646,
1.5604

■ 24.3140, 9.5105,
7.5393

■ 37.6239, -4.4053,
0.2622

■ 22.5283, 12.2335,
8.5266

■ 40.1483, -6.3579,
-1.0533

■ 20.9179, 15.0211,
9.3794

■ 42.7361, -8.2333,
-2.3833

■ 19.5072, 17.8011,
10.0554

■ 45.3815, -10.0413,
-3.7256

■ 18.3202, 20.4643,
10.5110

■ 48.0795, -11.7907,
-5.0790

■ 17.3666, 22.8259,
10.8655

■ 50.8258, -13.4892,
-6.4425

■ 17.1648, 23.3328,
10.9854

■ 53.6168, -15.1435,
-7.8157

Harmonies

Analogous

The Analogous color harmony consists of three colors that are next to each other on the color wheel.



30.5082, 2.9220, 2.1493



30.5075, 2.0268, 4.0844



30.5082, 0.1541, 5.3012

Triad

The Triadic color harmony groups three colors that are evenly spaced from another and form a triangle on the color wheel.



30.5082, 2.0259, 4.0849



30.5082, -5.6132, 3.2910



30.5082, -1.1097, -2.8549

Complementary

The Complementary color scheme is a pair of colors which are on the opposite of each other on the color wheel.



30.5075, 2.0268, 4.0844



32.5172, -4.9285, -0.6701

Split Complementary

Split-complementary colors differ from the complementary color scheme. The scheme consists of three colors, the original color and two neighbors of the complement color.



30.5082, -3.3730, -2.4925



30.5075, 2.0268, 4.0844



30.5082, -5.9289, 1.1637

Square

The Square scheme is like the rectangle color scheme, but the four colors are evenly spaced on the color wheel.



30.5082, 2.0259, 4.0849



30.5082, -4.2449, 4.8673



30.5082, -5.1204, -0.9805



30.5082, 1.0772, -1.9370

Rectangle

The Rectangle color scheme consists of four colors that form a rectangle on the color wheel.



30.5075, 2.0268, 4.0844



30.5082, -1.3710, 5.5953



30.5082, -5.1204, -0.9805



30.5082, -1.8871, -2.8798

Sweetspot

The Sweet Spot groups the original color and five complimentary colors.



30.5082, 2.0259, 4.0849



43.6660, -0.9736, 3.3193



30.1496, 5.4153, -2.2295



21.6842, -0.4166, 1.6940



72.2857, -3.8570, 3.9274



22.5557, -1.2035, 1.2255

Same Dimension

The Same Dimension uses a secret algorithm to generate beautiful new colors.



30.5082, 2.0259, 4.0849



38.7564, 3.9006, 6.0022



32.6496, -1.6591, 6.3073



16.2915, 0.0364, 1.5084



19.8786, 27.6596, 12.7334



44.8910, 67.2636, 28.8392

Inverse Universe

The Inverse Universe completely reimagines the original color for something new.



32.5172, -4.9285, -0.6701



41.9821, -7.2803, -1.6355



30.2839, -1.3204, -3.5039



16.8071, -1.7450, 0.2888



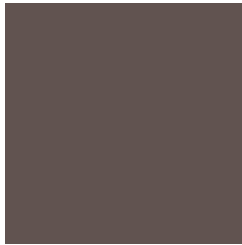
29.8260, -11.5199, -12.4117



68.0996, -25.5079, -30.0543

Previews

White Background



This preview shows how the HunterLab color 30.5075, 2.0268, 4.0844 looks on a white background.

Color Contrast Check

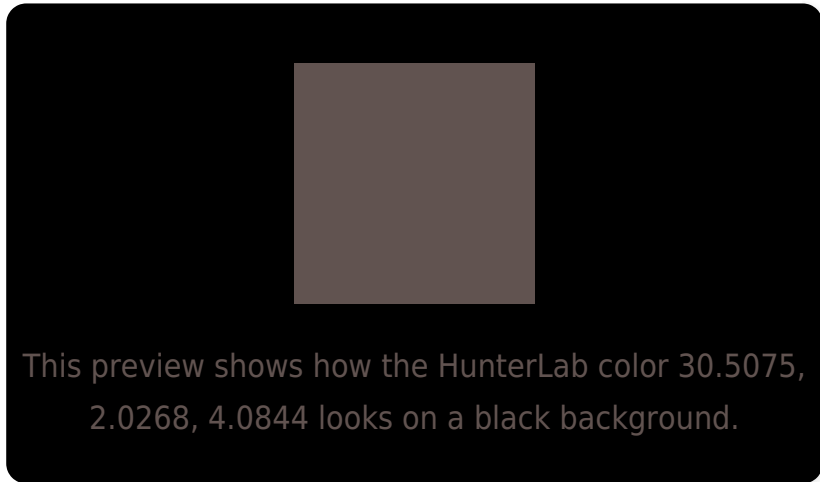
Large Text (above 18pt) WCAG AA ✓ Pass

Any Text WCAG AA ✓ Pass

Large Text (above 18pt) WCAG AAA ✓ Pass

Any Text WCAG AAA ✓ Pass

Black Background



Color Contrast Check

Large Text (above 18pt) WCAG AA × Fail

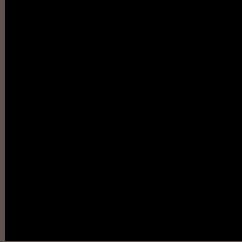
Any Text WCAG AA × Fail

Large Text (above 18pt) WCAG AAA × Fail

Any Text WCAG AAA × Fail

If you want to check with other color combinations, try the [Color Contrast Checker](#).

HunterLab 30.5075, 2.0268, 4.0844 Background



This preview shows how black text looks on a background with the HunterLab color 30.5075, 2.0268, 4.0844.



This preview shows how white text looks on a background with the HunterLab color 30.5075, 2.0268,

Color Blindness Simulation

Color vision deficiency is a very complex topic, and I could not describe the different causes any better than Wikipedia does, so if you want to learn more, you should check out their [article about color blindness](#).

Dichromacy



Original Color

30.5075, 2.0268, 4.0844

Protanopia

30.6409, -1.3628, 3.4105

Deuteranopia

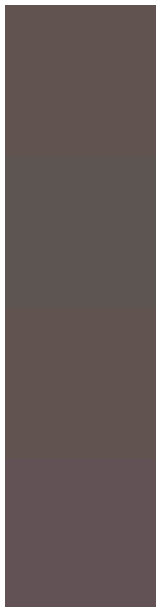
30.5075, 2.0268, 4.0844



Tritanopia

30.5546, 3.8730, 0.9801

Trichromacy



Original Color

30.5075, 2.0268, 4.0844

Protanomaly

30.6046, -0.2065, 3.7738

Deuteranomaly

30.5075, 2.0268, 4.0844

Tritanomaly

30.4748, 3.4497, 2.1182

Monochromacy



Original Color

30.5075, 2.0268, 4.0844

Achromatopsia

30.8719, -1.6472, 1.6773

Achromatomaly

30.8542, -0.5250, 2.8854

CSS Examples

Text

The CSS property to change the color of the text to HunterLab 30.5075, 2.0268, 4.0844 is called "color". The color property can be set on classes, ids or directly on the HTML element.

This example shows how text in the color `rgb(97, 83, 80)` looks like.

```
.text, #text, p{  
    color:rgb(97, 83, 80)  
}
```

If you want to add a text shadow in that color use the text-shadow property, you can generate a text shadow directly with our [CSS Text Shadow Generator](#).

Here you see how black text with a 4 pixel rgb(97, 83, 80) colored shadow looks like.

```
.shadow{ text-shadow: 4px 4px 2px rgb(97, 83, 80) }
```

Border

The CSS property to change the border of an element to HunterLab 30.5075, 2.0268, 4.0844 is called "border".

The border property can be set on classes, ids or directly on the HTML element.

This example shows the color as border, it can be applied via the CSS property "border" or "border-color".

```
.border, #border, table{ border:4px solid rgb(97, 83, 80) }
```


If only the border color should be changed use the property `border-color`.

```
.border{ border-color:rgb(97, 83, 80) }
```

If you want to add a box shadow in that color use:

Here you see how a box with a 4 pixel `rgb(97, 83, 80)` colored shadow looks like.

```
.boxshadow{ -moz-box-shadow:4px 4px 4px  
4px rgb(97, 83, 80); -webkit-box-  
shadow:4px 4px 4px 4px rgb(97, 83, 80);  
box-shadow:4px 4px 4px 4px rgb(97, 83, 80)  
}
```

Background

The CSS property to change the background color of an element to HunterLab 30.5075, 2.0268, 4.0844 is called "background". The background property can be set on classes, ids or directly on the HTML element.

```
.background, #background, body{  
background: rgb(97, 83, 80) }
```

If only the background color should be changed can be used:

```
.background{ background-color: rgb(97, 83,  
80) }
```

This example shows the color as background, it is applied via the CSS property "background".

To optimize and compress your CSS code, you can use our [online CSS compressor and optimizer](#) based on csstidy. If you want to create a linear or radial gradient as background or border, check our [CSS Gradient Generator](#).

Hey! You found this booklet interesting? Support Converting Colors with the new Membership Option!

The pro membership hides all ads, plus gives you double the colors in the color bucket, and more awesome pro features!

[Learn more, Memberships starting at \\$2.50/m!](#)

**Follow me
on Twitter!**

@ConvertingColor