

Converting Colors

HunterLab(30.6829, 5.8433,
3.4328)

Have a look what the booklet for
HunterLab(30.6829, 5.8433, 3.4328)
contains.

HunterLab(30.8177, 5.6764, 3.7313)	3
<i>Conversions</i>	4
<i>Details</i>	6
<i>Harmonies</i>	12
<i>Previews</i>	24
<i>Color Blindness Simulation</i>	28
<i>CSS Examples</i>	31

Color

**HunterLab(30.8177, 5.6764,
3.7313)**

Conversions

Conversions Part 1

Format	Color
Hex	695152
RGB	105, 81, 82
RGB Percent	41%, 32%, 32%
CMY	0.5882, 0.6823, 0.6784
CMYK	0.00, 0.23, 0.22, 0.59
HSL	358°, 13%, 36%
HSV	358°, 23%, 41%
XYZ	10.2911, 9.4973, 9.2734
YIQ	88.2900, 13.9830, 5.3990

Conversions

Conversions Part 2

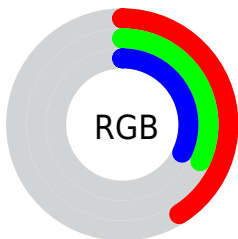
Format	Color
R_{YB}	105, 81, 82
Decimal	6902098
CIE Lab	36.93, 10.19, 3.26
CIE LCh	37, 10.694, 17.724
Yxy	9.4977, 0.3541, 0.3268
Android (android.graphics.Color)	4285092178 (0xFF695152)
YUV	88.2900, -3.1010, 14.6547
Hunter-Lab	30.8177, 5.6764, 3.7313

Details

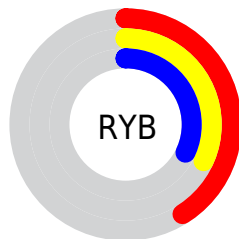
The HunterLab color **30.8177, 5.6764, 3.7313** is a dark color, and the websafe version is hex **666666**. A complement of this color would be **35.8499, -8.2463, 0.2854**, and the grayscale version is **31.3536, -1.6729, 1.7035**.

A 20% lighter version of the original color is **49.7715, 6.0885, 5.1963**, and **15.0505, 5.1162, 2.4686** is the 20% darker color. If you saturate the color by 10%, you get **28.1315, 9.2416, 4.5974**, and if you desaturate by 10%, it is **33.6831, 2.2334, 2.9459**.

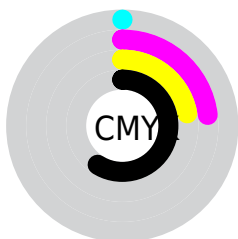
Distribution



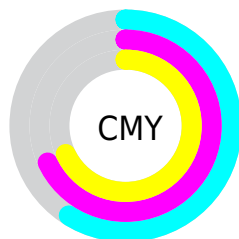
- Red (41%)
- Green (32%)
- Blue (32%)



- Red (41%)
- Yellow (32%)
- Blue (32%)



- Cyan (0%)
- Magenta (23%)
- Yellow (22%)
- Black (59%)



- Cyan (59%)
- Magenta (68%)
- Yellow (68%)

Brightness & Saturation Gradients

These gradients show how the HunterLab color 30.8177, 5.6764, 3.7313 changes by changing the brightness by 10 percent. The first figure shows a shift by +10% for each color and the second figure -10%.

Similar to the brightness gradients but the following saturation gradients show a change of the HunterLab color 30.8177, 5.6764, 3.7313 by changing the saturation by 10% instead.

■ 30.8177, 5.6764,
3.7313

■ 30.8177, 5.6764,
3.7313

■ 136.7658, 4.3963,
10.8977

■ 22.5105, 5.4590,
3.0599

■ 49.8462, 5.8285,
5.1486

■ 15.1221, 5.1226,
2.4082

■ 60.4429, 5.7910,
5.8952

■ 8.7561, 4.7525,
2.0178

■ 71.6993, 5.6891,
6.6674

0.0000, NaN, NaN

0.0000, NaN, NaN

■ 83.5790, 5.5292,
7.4648

0.0000, NaN, NaN

■ 96.0508, 5.3162,
8.2870

0.0000, NaN, NaN

109.0877, 5.0542,

0.0000, NaN, NaN

9.1335

0.0000, NaN, NaN

122.6663, 4.7466,
10.0039

■ 30.8177, 5.6764,
3.7313

■ 30.8177, 5.6764,
3.7313

■ 28.1315, 9.2416,
4.5974

■ 33.6831, 2.2334,
2.9459

■ 25.6548, 12.9075,
5.5436

■ 36.6993, -1.0815,
2.2332

■ 23.4274, 16.6097,
6.5610

■ 39.8459, -4.2776,
1.5854

■ 21.4938, 20.2259,
7.6213

■ 43.1061, -7.3682,
0.9939

■ 19.9007, 23.5601,
8.6708

■ 46.4661, -10.3673,
0.4507

■ 18.6881, 26.3555,
9.6291

■ 49.9150, -13.2888,
-0.0513

■ 17.8651, 28.3941,
10.3977

■ 53.4438, -16.1450,
-0.5181

■ 17.3575, 29.7804,
10.7887

■ 57.0450, -18.9469,
-0.9549

■ 60.7123, -21.7039,
-1.3660

Harmonies

Analogous

The Analogous color harmony consists of three colors that are next to each other on the color wheel.



30.8184, 5.8729, 0.1529



30.8177, 5.6764, 3.7313



30.8184, 3.4580, 6.4172

Triad

The Triadic color harmony groups three colors that are evenly spaced from another and form a triangle on the color wheel.



30.8184, 5.6753, 3.7318



30.8184, -6.9000, 6.0217



30.8184, -3.1940, -5.9697

Complementary

The Complementary color scheme is a pair of colors which are on the opposite of each other on the color wheel.



30.8177, 5.6764, 3.7313



35.8499, -8.2463, 0.2854

Split Complementary

Split-complementary colors differ from the complementary color scheme. The scheme consists of three colors, the original color and two neighbors of the complement color.



30.8184, -6.4381, -3.9596



30.8177, 5.6764, 3.7313



30.8184, -8.5068, 3.1280

Square

The Square scheme is like the rectangle color scheme, but the four colors are evenly spaced on the color wheel.



30.8184, 5.6753, 3.7318



30.8184, -3.8527, 7.6241



30.8184, -8.3419, -0.5287



30.8184, 0.6245, -5.7566

Rectangle

The Rectangle color scheme consists of four colors that form a rectangle on the color wheel.



30.8177, 5.6764, 3.7313



30.8184, 1.1911, 7.4736



30.8184, -8.3419, -0.5287



30.8184, -4.3841, -5.5224

Sweetspot

The Sweet Spot groups the original color and five complimentary colors.



30.8184, 5.6753, 3.7318



47.3315, 0.4606, 3.3916



31.3629, 8.7350, -5.7866



22.8430, 0.2942, 1.6568



74.4461, -3.9723, 4.0448



24.3420, -1.2988, 1.3225

Same Dimension

The Same Dimension uses a secret algorithm to generate beautiful new colors.



30.8184, 5.6753, 3.7318



39.4373, 9.9239, 5.5502



33.4923, 0.6587, 6.8677



17.6596, 0.4741, 1.3494



19.5280, 33.4970, 12.1942



44.0441, 75.4775, 28.0676

Inverse Universe

The Inverse Universe completely reimagines the original color for something new.



30.8184, 5.6753, 3.7318



39.4373, 9.9239, 5.5502



32.8795, -3.4454, -3.8999



17.6596, 0.4741, 1.3494



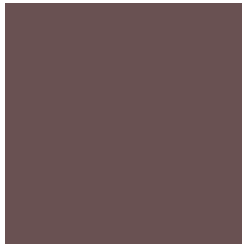
19.5280, 33.4970, 12.1942



44.0441, 75.4775, 28.0676

Previews

White Background



This preview shows how the HunterLab color 30.8177, 5.6764, 3.7313 looks on a white background.

Color Contrast Check

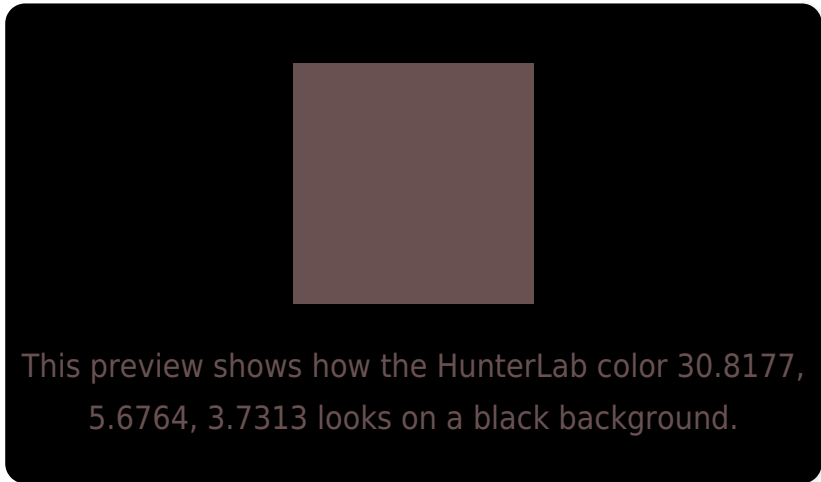
Large Text (above 18pt) WCAG AA ✓ Pass

Any Text WCAG AA ✓ Pass

Large Text (above 18pt) WCAG AAA ✓ Pass

Any Text WCAG AAA ✓ Pass

Black Background



Color Contrast Check

Large Text (above 18pt) WCAG AA × Fail

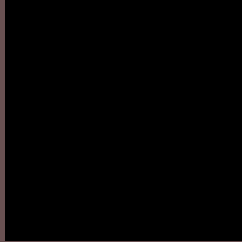
Any Text WCAG AA × Fail

Large Text (above 18pt) WCAG AAA × Fail

Any Text WCAG AAA × Fail

If you want to check with other color combinations, try the [Color Contrast Checker](#).

HunterLab 30.8177, 5.6764, 3.7313 Background



This preview shows how black text looks on a background with the HunterLab color 30.8177, 5.6764, 3.7313.

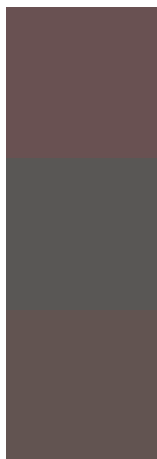


This preview shows how white text looks on a background with the HunterLab color 30.8177, 5.6764,

Color Blindness Simulation

Color vision deficiency is a very complex topic, and I could not describe the different causes any better than Wikipedia does, so if you want to learn more, you should check out their [article about color blindness](#).

Dichromacy



Original Color

30.8177, 5.6764, 3.7313

Protanopia

30.9776, -1.3843, 2.6148

Deuteranopia

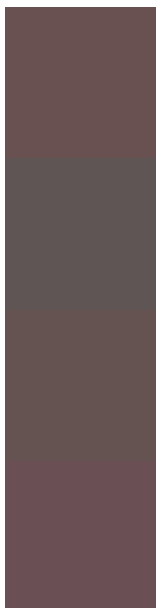
30.8730, 2.0122, 4.1091



Tritanopia

30.7789, 6.9860, 2.1286

Trichromacy



Original Color

30.8177, 5.6764, 3.7313

Protanomaly

30.9354, 1.0715, 3.0057

Deuteranomaly

30.8987, 3.3806, 4.1614

Tritanomaly

30.7528, 6.8508, 2.5002

Monochromacy



Original Color

30.8177, 5.6764, 3.7313

Achromatopsia

31.2390, -1.6668, 1.6973

Achromatomaly

30.9008, 1.0569, 2.1668

CSS Examples

Text

The CSS property to change the color of the text to HunterLab 30.8177, 5.6764, 3.7313 is called "color". The color property can be set on classes, ids or directly on the HTML element.

This example shows how text in the color `rgb(105, 81, 82)` looks like.

```
.text, #text, p{  
    color:rgb(105, 81, 82)  
}
```

If you want to add a text shadow in that color use the text-shadow property, you can generate a text shadow directly with our [CSS Text Shadow Generator](#).

Here you see how black text with a 4 pixel rgb(105, 81, 82) colored shadow looks like.

```
.shadow{ text-shadow: 4px 4px 2px rgb(105, 81, 82) }
```

Border

The CSS property to change the border of an element to HunterLab 30.8177, 5.6764, 3.7313 is called "border".

The border property can be set on classes, ids or directly on the HTML element.

This example shows the color as border, it can be applied via the CSS property "border" or "border-color".

```
.border, #border, table{ border:4px solid rgb(105, 81, 82) }
```


If only the border color should be changed use the property border-color.

```
.border{ border-color:rgb(105, 81, 82) }
```

If you want to add a box shadow in that color use:

Here you see how a box with a 4 pixel rgb(105, 81, 82) colored shadow looks like.

```
.boxshadow{ -moz-box-shadow:4px 4px 4px  
4px rgb(105, 81, 82); -webkit-box-  
shadow:4px 4px 4px 4px rgb(105, 81, 82);  
box-shadow:4px 4px 4px 4px rgb(105, 81,  
82) }
```

Background

The CSS property to change the background color of an element to HunterLab 30.8177, 5.6764, 3.7313 is called "background". The background property can be set on classes, ids or directly on the HTML element.

```
.background, #background, body{  
background: rgb(105, 81, 82) }
```

If only the background color should be changed can be used:

```
.background{ background-color: rgb(105, 81,  
82) }
```

This example shows the color as background, it is applied via the CSS property "background".

To optimize and compress your CSS code, you can use our [online CSS compressor and optimizer](#) based on csstidy. If you want to create a linear or radial gradient as background or border, check our [CSS Gradient Generator](#).

Hey! You found this booklet interesting? Support Converting Colors with the new Membership Option!

The pro membership hides all ads, plus gives you double the colors in the color bucket, and more awesome pro features!

[Learn more, Memberships starting at \\$2.50/m!](#)

**Follow me
on Twitter!**

@ConvertingColor