

Converting Colors

HunterLab(30.7996, 7.9643,
4.5082)

Have a look what the booklet for
HunterLab(30.7996, 7.9643, 4.5082)
contains.

HunterLab(30.7996, 7.9643, 4.5082)	3
<i>Conversions</i>	4
<i>Details</i>	6
<i>Harmonies</i>	12
<i>Previews</i>	24
<i>Color Blindness Simulation</i>	28
<i>CSS Examples</i>	31

Color

**HunterLab(30.7996, 7.9643,
4.5082)**

Conversions

Conversions Part 1

Format	Color
Hex	6E4F50
RGB	110, 79, 80
RGB Percent	43%, 31%, 31%
CMY	0.5686, 0.6902, 0.6863
CMYK	0.00, 0.28, 0.27, 0.57
HSL	358°, 16%, 37%
HSV	358°, 28%, 43%
XYZ	10.6744, 9.4862, 8.8578
YIQ	88.3830, 18.1550, 6.8830

Conversions

Conversions Part 2

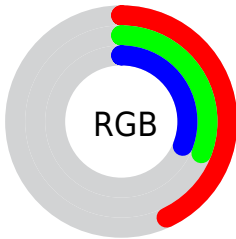
Format	Color
R_{YB}	110, 79, 80
Decimal	7229264
CIE _{Lab}	36.90, 13.20, 4.55
CIE _{LCh}	37, 13.962, 19.039
Yxy	9.4866, 0.3678, 0.3269
Android (android.graphics.Color)	4285419344 (0xFF6E4F50)
YUV	88.3830, -4.1328, 18.9581
Hunter-Lab	30.7996, 7.9643, 4.5082

Details

The HunterLab color $[30.7996, 7.9643, 4.5082]$ is a dark color, and the websafe version is hex 996666 . A complement of this color would be $[37.3075, -9.9733, -0.1800]$, and the grayscale version is $[31.3904, -1.6749, 1.7055]$.

A 20% lighter version of the original color is $[49.7038, 8.4812, 6.0013]$, and $[15.0450, 7.0686, 2.8169]$ is the 20% darker color. If you saturate the color by 10%, you get $[28.0779, 11.7855, 5.4967]$, and if you desaturate by 10%, it is $[33.7299, 4.2652, 3.6013]$.

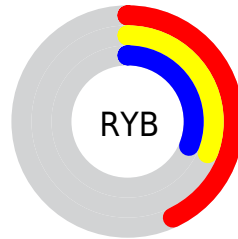
Distribution



Red (43%)

Green (31%)

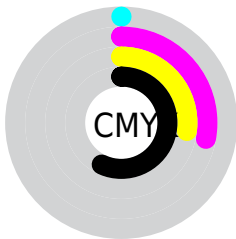
Blue (31%)



Red (43%)

Yellow (31%)

Blue (31%)

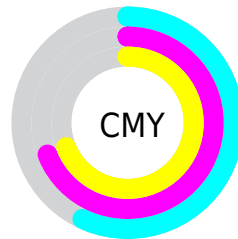


Cyan (0%)

Magenta (28%)

Yellow (27%)

Black (57%)



Cyan (57%)

Magenta (69%)

Yellow (69%)

Brightness & Saturation Gradients

These gradients show how the HunterLab color 30.7996, 7.9643, 4.5082 changes by changing the brightness by 10 percent. The first figure shows a shift by +10% for each color and the second figure -10%.

Similar to the brightness gradients but the following saturation gradients show a change of the HunterLab color 30.7996, 7.9643, 4.5082 by changing the saturation by 10% instead.

■ 30.7996, 7.9643,
4.5082

■ 30.7996, 7.9643,
4.5082

■ 136.7361, 7.9301,
12.2481

■ 22.4942, 7.5661,
3.7449

■ 49.8250, 8.4431,
6.0833

■ 15.1078, 7.0349,
2.9878

■ 60.4202, 8.5552,
6.8998

■ 8.7430, 6.4663,
2.6352

■ 71.6754, 8.5955,
7.7372

0.0000, NaN, NaN

0.0000, NaN, NaN

■ 83.5538, 8.5713,
8.5963

0.0000, NaN, NaN

■ 96.0244, 8.4882,
9.4769

0.0000, NaN, NaN

109.0602, 8.3512,

0.0000, NaN, NaN

122.6377, 8.1640,
11.3030

■ 30.7996, 7.9643,
4.5082

■ 30.7996, 7.9643,
4.5082

■ 28.0779, 11.7855,
5.4967

■ 33.7299, 4.2652,
3.6013

■ 25.6014, 15.6862,
6.5592

■ 36.8352, 0.7051,
2.7715

■ 23.4161, 19.5659,
7.6740

■ 40.0905, -2.7213,
2.0120

■ 21.5719, 23.2507,
8.7941

■ 43.4757, -6.0263,
1.3144

■ 20.1158, 26.4894,
9.8437

■ 46.9743, -9.2250,
0.6702

■ 19.0807, 28.9962,
10.7266

■ 50.5733, -12.3328,
0.0718

■ 18.3589, 30.8970,
11.3455

■ 54.2619, -15.3638,
-0.4876

■ 18.2285, 31.2594,
11.4489

■ 58.0313, -18.3307,
-1.0139

■ 61.8743, -21.2444,
-1.5118

Harmonies

Analogous

The Analogous color harmony consists of three colors that are next to each other on the color wheel.



30.8003, 8.3555, -0.1105



30.7996, 7.9643, 4.5082



30.8003, 4.9027, 7.8051

Triad

The Triadic color harmony groups three colors that are evenly spaced from another and form a triangle on the color wheel.



30.8003, 7.9631, 4.5087



30.8003, -8.5631, 7.0814



30.8003, -3.4489, -8.7016

Complementary

The Complementary color scheme is a pair of colors which are on the opposite of each other on the color wheel.



30.7996, 7.9643, 4.5082



37.3075, -9.9733, -0.1800

Split Complementary

Split-complementary colors differ from the complementary color scheme. The scheme consists of three colors, the original color and two neighbors of the complement color.



30.8003, -7.6878, -6.0459



30.7996, 7.9643, 4.5082



30.8003, -10.5129, 3.3625

Square

The Square scheme is like the rectangle color scheme, but the four colors are evenly spaced on the color wheel.



30.8003, 7.9631, 4.5087



30.8003, -4.7140, 9.1188



30.8003, -10.2030, -1.4531



30.8003, 1.5489, -8.2633

Rectangle

The Rectangle color scheme consists of four colors that form a rectangle on the color wheel.



30.7996, 7.9643, 4.5082



30.8003, 1.8642, 9.0420



30.8003, -10.2030, -1.4531



30.8003, -5.0039, -8.1263

Sweetspot

The Sweet Spot groups the original color and five complimentary colors.



30.8003, 7.9631, 4.5087



48.8001, 0.9501, 3.6764



31.5710, 12.1075, -8.0380



23.2953, 0.7292, 1.8352



75.5302, -4.0301, 4.1037



25.2436, -1.3469, 1.3715

Same Dimension

The Same Dimension uses a secret algorithm to generate beautiful new colors.



30.8003, 7.9631, 4.5087



38.3568, 13.9449, 6.8442



34.3377, 1.2365, 8.4069



18.4475, 0.5040, 1.4319



19.9770, 34.2535, 12.5807



44.5593, 76.3483, 28.4896

Inverse Universe

The Inverse Universe completely reimagines the original color for something new.



30.8003, 7.9631, 4.5087



38.3568, 13.9449, 6.8442



33.2705, -3.6081, -5.8508



18.4475, 0.5040, 1.4319



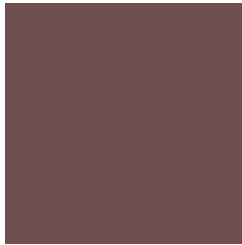
19.9770, 34.2535, 12.5807



44.5593, 76.3483, 28.4896

Previews

White Background



This preview shows how the HunterLab color 30.7996, 7.9643, 4.5082 looks on a white background.

Color Contrast Check

Large Text (above 18pt) WCAG AA ✓ Pass

Any Text WCAG AA ✓ Pass

Large Text (above 18pt) WCAG AAA ✓ Pass

Any Text WCAG AAA ✓ Pass

Black Background



Color Contrast Check

Large Text (above 18pt) WCAG AA × Fail

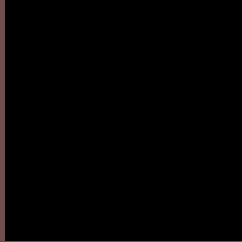
Any Text WCAG AA × Fail

Large Text (above 18pt) WCAG AAA × Fail

Any Text WCAG AAA × Fail

If you want to check with other color combinations, try the [Color Contrast Checker](#).

HunterLab 30.7996, 7.9643, 4.5082 Background



This preview shows how black text looks on a background with the HunterLab color 30.7996, 7.9643, 4.5082.



This preview shows how white text looks on a background with the HunterLab color 30.7996, 7.9643,

Color Blindness Simulation

Color vision deficiency is a very complex topic, and I could not describe the different causes any better than Wikipedia does, so if you want to learn more, you should check out their [article about color blindness](#).

Dichromacy



Original Color

30.7996, 7.9643, 4.5082

Protanopia

30.9521, -1.5238, 2.9793

Deuteranopia

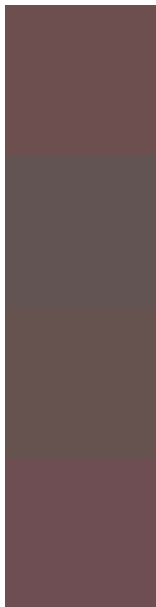
30.8250, 1.7551, 4.7971



Tritanopia

30.6657, 8.9382, 2.8359

Trichromacy



Original Color

30.7996, 7.9643, 4.5082

Protanomaly

30.8327, 1.9756, 3.2968

Deuteranomaly

30.6983, 3.8898, 4.6976

Tritanomaly

30.6403, 8.8078, 3.1991

Monochromacy



Original Color

30.7996, 7.9643, 4.5082

Achromatopsia

31.2390, -1.6668, 1.6973

Achromatomaly

31.0478, 1.5029, 2.7458

CSS Examples

Text

The CSS property to change the color of the text to HunterLab 30.7996, 7.9643, 4.5082 is called "color". The color property can be set on classes, ids or directly on the HTML element.

This example shows how text in the color `rgb(110, 79, 80)` looks like.

```
.text, #text, p{  
    color:rgb(110, 79, 80)  
}
```

If you want to add a text shadow in that color use the text-shadow property, you can generate a text shadow directly with our [CSS Text Shadow Generator](#).

Here you see how black text with a 4 pixel rgb(110, 79, 80) colored shadow looks like.

```
.shadow{ text-shadow: 4px 4px 2px rgb(110, 79, 80) }
```

Border

The CSS property to change the border of an element to HunterLab 30.7996, 7.9643, 4.5082 is called "border". The border property can be set on classes, ids or directly on the HTML element.

This example shows the color as border, it can be applied via the CSS property "border" or "border-color".

```
.border, #border, table{ border:4px solid rgb(110, 79, 80) }
```


If only the border color should be changed use the property `border-color`.

```
.border{ border-color:rgb(110, 79, 80) }
```

If you want to add a box shadow in that color use:

Here you see how a box with a 4 pixel `rgb(110, 79, 80)` colored shadow looks like.

```
.boxshadow{ -moz-box-shadow:4px 4px 4px  
4px rgb(110, 79, 80); -webkit-box-  
shadow:4px 4px 4px 4px rgb(110, 79, 80);  
box-shadow:4px 4px 4px 4px rgb(110, 79,  
80) }
```

Background

The CSS property to change the background color of an element to HunterLab 30.7996, 7.9643, 4.5082 is called "background". The background property can be set on classes, ids or directly on the HTML element.

```
.background, #background, body{  
background: rgb(110, 79, 80) }
```

If only the background color should be changed can be used:

```
.background{ background-color: rgb(110, 79,  
80) }
```

This example shows the color as background, it is applied via the CSS property "background".

To optimize and compress your CSS code, you can use our [online CSS compressor and optimizer](#) based on csstidy. If you want to create a linear or radial gradient as background or border, check our [CSS Gradient Generator](#).

Hey! You found this booklet interesting? Support Converting Colors with the new Membership Option!

The pro membership hides all ads, plus gives you double the colors in the color bucket, and more awesome pro features!

[Learn more, Memberships starting at \\$2.50/m!](#)

**Follow me
on Twitter!**

@ConvertingColor