

Converting Colors

HunterLab(30.9297, 11.0936,
2.9955)

Have a look what the booklet for
HunterLab(30.9297, 11.0936,
2.9955) contains.

HunterLab(30.9721, 11.0640, 3.2223)	3
<i>Conversions</i>	4
<i>Details</i>	6
<i>Harmonies</i>	12
<i>Previews</i>	24
<i>Color Blindness Simulation</i>	28
<i>CSS Examples</i>	31

Color

**HunterLab(30.9721, 11.0640,
3.2223)**

Conversions

Conversions Part 1

Format	Color
Hex	734D54
RGB	115, 77, 84
RGB Percent	45%, 30%, 33%
CMY	0.5490, 0.6980, 0.6706
CMYK	0.00, 0.33, 0.27, 0.55
HSL	349°, 20%, 38%
HSV	349°, 33%, 45%
XYZ	11.3244, 9.5927, 9.6422
YIQ	89.1600, 20.4010, 10.2330

Conversions

Conversions Part 2

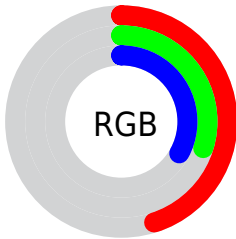
Format	Color
RYB	115, 77, 84
Decimal	7556436
CIELab	37.10, 17.15, 2.41
CIELCh	37, 17.316, 7.996
Yxy	9.5932, 0.3706, 0.3139
Android (android.graphics.Color)	4285746516 (0xFF734D54)
YUV	89.1600, -2.5439, 22.6617
Hunter-Lab	30.9721, 11.0640, 3.2223

Details

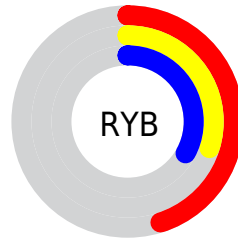
The HunterLab color **30.9721, 11.0640, 3.2223** is a dark color, and the websafe version is hex **996666**. A complement of this color would be **38.6293, -12.6200, 1.8056**, and the grayscale version is **31.6701, -1.6898, 1.7207**.

A 20% lighter version of the original color is **49.9400, 12.1239, 4.6401**, and **15.2897, 9.7782, 2.1494** is the 20% darker color. If you saturate the color by 10%, you get **28.2600, 15.2659, 3.8585**, and if you desaturate by 10%, it is **33.9180, 6.9230, 2.7630**.

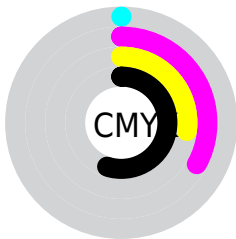
Distribution



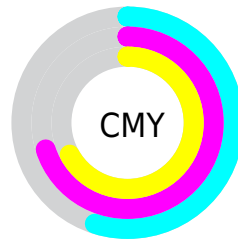
- Red (45%)
- Green (30%)
- Blue (33%)



- Red (45%)
- Yellow (30%)
- Blue (33%)



- Cyan (0%)
- Magenta (33%)
- Yellow (27%)
- Black (55%)



- Cyan (55%)
- Magenta (70%)
- Yellow (67%)

Brightness & Saturation Gradients

These gradients show how the HunterLab color 30.9721, 11.0640, 3.2223 changes by changing the brightness by 10 percent. The first figure shows a shift by +10% for each color and the second figure -10%.

Similar to the brightness gradients but the following saturation gradients show a change of the HunterLab color 30.9721, 11.0640, 3.2223 by changing the saturation by 10% instead.

30.9721, 11.0640,
3.2223

30.9721, 11.0640,
3.2223

137.0194, 12.6131,
10.0237

22.6496, 10.4427,
2.6091

50.0274, 11.9526,
4.5395

15.2439, 9.6758,
2.0239

60.6361, 12.2541,
5.2417

8.8671, 8.8262,
1.6086

71.9039, 12.4752,
5.9723

0.0000, INF, NaN

0.0000, NaN, NaN

83.7943, 12.6239,
6.7304

0.0000, NaN, NaN

96.2763, 12.7070,
7.5153

0.0000, NaN, NaN

109.3230, 12.7300,

0.0000, NaN, NaN

122.9109, 12.6974,
9.1627

■ 30.9721, 11.0640,
3.2223

■ 30.9721, 11.0640,
3.2223

■ 28.2600, 15.2659,
3.8585

■ 33.9180, 6.9230,
2.7630

■ 25.8222, 19.4483,
4.6867

■ 37.0599, 2.8855,
2.4563

■ 23.7082, 23.4593,
5.7098

■ 40.3696, -1.0384,
2.2804

■ 21.9681, 27.0696,
6.9022

■ 43.8236, -4.8516,
2.2148

■ 20.6445, 29.9918,
8.1982

■ 47.4034, -8.5642,
2.2420

■ 19.7510, 31.9811,
9.4873

■ 51.0938, -12.1888,
2.3474

■ 19.2345, 33.2246,
10.2202

■ 54.8827, -15.7381,
2.5192

■ 58.7599, -19.2241,
2.7475

■ 62.7173, -22.6578,
3.0244

Harmonies

Analogous

The Analogous color harmony consists of three colors that are next to each other on the color wheel.



30.9728, 10.1968, -2.8730



30.9721, 11.0640, 3.2223



30.9728, 8.3156, 7.8884

Triad

The Triadic color harmony groups three colors that are evenly spaced from another and form a triangle on the color wheel.



30.9728, 11.0627, 3.2229



30.9728, -8.6594, 9.3601



30.9728, -5.9972, -10.7849

Complementary

The Complementary color scheme is a pair of colors which are on the opposite of each other on the color wheel.



30.9721, 11.0640, 3.2223



38.6293, -12.6200, 1.8056

Split Complementary

Split-complementary colors differ from the complementary color scheme. The scheme consists of three colors, the original color and two neighbors of the complement color.



30.9728, -10.5035, -6.1428



30.9721, 11.0640, 3.2223



30.9728, -11.9542, 5.6425

Square

The Square scheme is like the rectangle color scheme, but the four colors are evenly spaced on the color wheel.



30.9728, 11.0627, 3.2229



30.9728, -3.2958, 10.9478



30.9728, -12.6017, 0.0660



30.9728, 0.0222, -11.7842

Rectangle

The Rectangle color scheme consists of four colors that form a rectangle on the color wheel.



30.9721, 11.0640, 3.2223



30.9728, 4.9231, 9.8461



30.9728, -12.6017, 0.0660



30.9728, -7.7249, -9.5602

Sweetspot

The Sweet Spot groups the original color and five complimentary colors.



30.9728, 11.0627, 3.2229



50.8016, 2.3872, 3.2053



31.1396, 13.4924, -11.4583



24.5750, 1.4542, 1.5808



77.7063, -4.1462, 4.2219



27.0627, -1.4440, 1.4704

Same Dimension

The Same Dimension uses a secret algorithm to generate beautiful new colors.



30.9728, 11.0627, 3.2229



38.5114, 19.3068, 4.9740



33.5058, 4.9359, 8.3072



19.2636, 0.6566, 1.1910



20.5594, 35.5005, 11.0214



45.2802, 77.9797, 25.8792

Inverse Universe

The Inverse Universe completely reimagines the original color for something new.



30.9728, 11.0627, 3.2229



38.5114, 19.3068, 4.9740



35.5475, -6.6427, -5.2652



19.2636, 0.6566, 1.1910



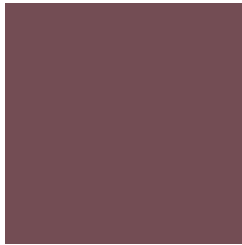
20.5594, 35.5005, 11.0214



45.2802, 77.9797, 25.8792

Previews

White Background



This preview shows how the HunterLab color 30.9721, 11.0640, 3.2223 looks on a white background.

Color Contrast Check

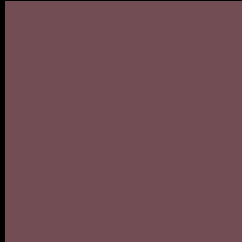
Large Text (above 18pt) WCAG AA ✓ Pass

Any Text WCAG AA ✓ Pass

Large Text (above 18pt) WCAG AAA ✓ Pass

Any Text WCAG AAA ✓ Pass

Black Background



This preview shows how the HunterLab color 30.9721, 11.0640, 3.2223 looks on a black background.

Color Contrast Check

Large Text (above 18pt) WCAG AA × Fail

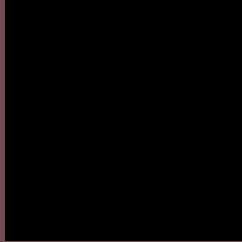
Any Text WCAG AA × Fail

Large Text (above 18pt) WCAG AAA × Fail

Any Text WCAG AAA × Fail

If you want to check with other color combinations, try the [Color Contrast Checker](#).

HunterLab 30.9721, 11.0640, 3.2223 Background



This preview shows how black text looks on a background with the HunterLab color 30.9721, 11.0640, 3.2223.



This preview shows how white text looks on a background with the HunterLab color 30.9721, 11.0640,

Color Blindness Simulation

Color vision deficiency is a very complex topic, and I could not describe the different causes any better than Wikipedia does, so if you want to learn more, you should check out their [article about color blindness](#).

Dichromacy



Original Color

30.9721, 11.0640, 3.2223

Protanopia

31.1102, -0.6608, 0.7238

Deuteranopia

31.1740, 1.8276, 3.6768



Tritanopia

30.9469, 10.9366, 3.5822

Trichromacy



Original Color

30.9721, 11.0640, 3.2223

Protanomaly

30.8022, 3.4190, 1.2687

Deuteranomaly

30.9874, 5.0326, 3.5242

Tritanomaly

30.9469, 10.9366, 3.5822

Monochromacy



Original Color

30.9721, 11.0640, 3.2223

Achromatopsia

31.6068, -1.6865, 1.7173

Achromatomaly

31.2759, 2.3732, 2.2203

CSS Examples

Text

The CSS property to change the color of the text to HunterLab 30.9721, 11.0640, 3.2223 is called "color". The color property can be set on classes, ids or directly on the HTML element.

This example shows how text in the color `rgb(115, 77, 84)` looks like.

```
.text, #text, p{  
    color:rgb(115, 77, 84)  
}
```

If you want to add a text shadow in that color use the text-shadow property, you can generate a text shadow directly with our [CSS Text Shadow Generator](#).

Here you see how black text with a 4 pixel rgb(115, 77, 84) colored shadow looks like.

```
.shadow{ text-shadow: 4px 4px 2px rgb(115, 77, 84) }
```

Border

The CSS property to change the border of an element to HunterLab 30.9721, 11.0640, 3.2223 is called "border". The border property can be set on classes, ids or directly on the HTML element.

This example shows the color as border, it can be applied via the CSS property "border" or "border-color".

```
.border, #border, table{ border:4px solid rgb(115, 77, 84) }
```


If only the border color should be changed use the property border-color.

```
.border{ border-color:rgb(115, 77, 84) }
```

If you want to add a box shadow in that color use:

Here you see how a box with a 4 pixel rgb(115, 77, 84) colored shadow looks like.

```
.boxshadow{ -moz-box-shadow:4px 4px 4px  
4px rgb(115, 77, 84); -webkit-box-  
shadow:4px 4px 4px 4px rgb(115, 77, 84);  
box-shadow:4px 4px 4px 4px rgb(115, 77,  
84) }
```

Background

The CSS property to change the background color of an element to HunterLab 30.9721, 11.0640, 3.2223 is called "background". The background property can be set on classes, ids or directly on the HTML element.

```
.background, #background, body{  
background: rgb(115, 77, 84) }
```

If only the background color should be changed can be used:

```
.background{ background-color: rgb(115, 77,  
84) }
```

This example shows the color as background, it is applied via the CSS property "background".

To optimize and compress your CSS code, you can use our [online CSS compressor and optimizer](#) based on csstidy. If you want to create a linear or radial gradient as background or border, check our [CSS Gradient Generator](#).

Hey! You found this booklet interesting? Support Converting Colors with the new Membership Option!

The pro membership hides all ads, plus gives you double the colors in the color bucket, and more awesome pro features!

[Learn more, Memberships starting at \\$2.50/m!](#)

**Follow me
on Twitter!**

@ConvertingColor