

Converting Colors

HunterLab(30.9708, -0.2238,
3.7982)

Have a look what the booklet for
HunterLab(30.9708, -0.2238, 3.7982)
contains.

HunterLab(30.9708, -0.2240, 3.7983)	3
<i>Conversions</i>	4
<i>Details</i>	6
<i>Harmonies</i>	12
<i>Previews</i>	24
<i>Color Blindness Simulation</i>	28
<i>CSS Examples</i>	31

Color

**HunterLab(30.9708, -0.2240,
3.7983)**

Conversions

Conversions Part 1

Format	Color
Hex	5D5652
RGB	93, 86, 82
RGB Percent	36%, 34%, 32%
CMY	0.6353, 0.6627, 0.6784
CMYK	0.00, 0.08, 0.12, 0.64
HSL	22°, 6%, 34%
HSV	22°, 12%, 36%
XYZ	9.3650, 9.5919, 9.3405
YIQ	87.6370, 5.4560, 0.2400

Conversions

Conversions Part 2

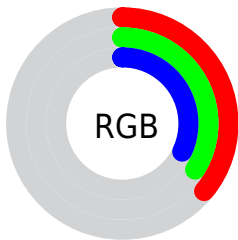
Format	Color
R_{YB}	93, 88, 82
Decimal	6116946
CIE Lab	37.10, 2.06, 3.35
CIE LCh	37, 3.927, 58.419
Yxy	9.5923, 0.3309, 0.3390
Android (android.graphics.Color)	4284307026 (0xFF5D5652)
YUV	87.6370, -2.7790, 4.7034
Hunter-Lab	30.9708, -0.2240, 3.7983

Details

The HunterLab color **30.9708, -0.2240, 3.7983** is a dark color, and the websafe version is hex **666666**. A complement of this color would be **31.1909, -2.9196, -0.5169**, and the grayscale version is **31.1147, -1.6602, 1.6905**.

A 20% lighter version of the original color is **50.0866, -1.3050, 5.4219**, and **15.2440, 0.2452, 2.5901** is the 20% darker color. If you saturate the color by 10%, you get **29.2474, 1.1930, 5.3702**, and if you desaturate by 10%, it is **32.7536, -1.5364, 2.1160**.

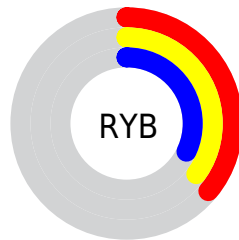
Distribution



Red (36%)

Green (34%)

Blue (32%)



Red (36%)

Yellow (35%)

Blue (32%)

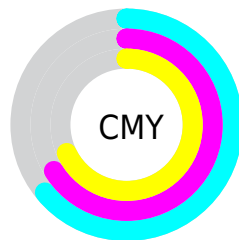


Cyan (0%)

Magenta (8%)

Yellow (12%)

Black (64%)



Cyan (64%)

Magenta (66%)

Yellow (68%)

Brightness & Saturation Gradients

These gradients show how the HunterLab color 30.9708, -0.2240, 3.7983 changes by changing the brightness by 10 percent. The first figure shows a shift by +10% for each color and the second figure -10%.

Similar to the brightness gradients but the following saturation gradients show a change of the HunterLab color 30.9708, -0.2240, 3.7983 by changing the saturation by 10% instead.

■ 30.9708, -0.2240,
3.7983

■ 30.9708, -0.2240,
3.7983

■ 137.0172, -4.9850,
11.0081

■ 22.6484, 0.0808,
3.1201

■ 50.0258, -0.9990,
5.2273

■ 15.2429, 0.3205,
2.4609

■ 60.6344, -1.4562,
5.9792

■ 8.8661, 0.5373,
2.0469

■ 71.9021, -1.9550,
6.7563

0.0000, NaN, NaN

0.0000, NaN, NaN

■ 83.7924, -2.4924,
7.5584

0.0000, NaN, NaN

■ 96.2743, -3.0660,
8.3850

0.0000, NaN, NaN

109.3209, -3.6737,

0.0000, NaN, NaN

9.2359

0.0000, NaN, NaN

122.9088, -4.3139,
10.1104

■ 30.9708, -0.2240,
3.7983

■ 30.9708, -0.2240,
3.7983

■ 29.2474, 1.1930,
5.3702

■ 32.7536, -1.5364,
2.1160

■ 27.5875, 2.7259,
6.8137

■ 34.5885, -2.7508,
0.3359

■ 25.9986, 4.3812,
8.1096

■ 36.4715, -3.8768,
-1.5297

■ 24.4887, 6.1638,
9.2356

■ 38.3986, -4.9230,
-3.4711

■ 23.0665, 8.0740,
10.1667

■ 40.3664, -5.8972,
-5.4800

■ 21.7417, 10.1048,
10.8768

■ 42.3717, -6.8065,
-7.5496

■ 20.5246, 12.2388,
11.3413

■ 44.4120, -7.6574,
-9.6741

■ 19.4247, 14.4397,
11.5560

■ 46.4848, -8.4556,
-11.8485

■ 18.6057, 16.1913,
11.7482

■ 48.5880, -9.2064,
-14.0688

Harmonies

Analogous

The Analogous color harmony consists of three colors that are next to each other on the color wheel.



30.9715, 0.7608, 2.8856



30.9708, -0.2240, 3.7983



30.9715, -1.5795, 4.1493

Triad

The Triadic color harmony groups three colors that are evenly spaced from another and form a triangle on the color wheel.



30.9715, -0.2249, 3.7988



30.9715, -4.3120, 1.7568



30.9715, -0.3564, -0.6636

Complementary

The Complementary color scheme is a pair of colors which are on the opposite of each other on the color wheel.



30.9708, -0.2240, 3.7983



31.1909, -2.9196, -0.5169

Split Complementary

Split-complementary colors differ from the complementary color scheme. The scheme consists of three colors, the original color and two neighbors of the complement color.



30.9715, -1.7288, -0.9982



30.9708, -0.2240, 3.7983



30.9715, -3.9975, 0.4361

Square

The Square scheme is like the rectangle color scheme, but the four colors are evenly spaced on the color wheel.



30.9715, -0.2249, 3.7988



30.9715, -3.9250, 3.0034



30.9715, -3.0581, -0.5873



30.9715, 0.6840, 0.3078

Rectangle

The Rectangle color scheme consists of four colors that form a rectangle on the color wheel.



30.9708, -0.2240, 3.7983



30.9715, -2.5043, 4.0292



30.9715, -3.0581, -0.5873



30.9715, -0.7949, -0.8562

Sweetspot

The Sweet Spot groups the original color and five complimentary colors.



30.9715, -0.2249, 3.7988



42.3054, -1.6280, 3.2848



30.1424, 2.5675, -0.0371



21.1173, -0.7680, 1.7074



71.2094, -3.7996, 3.8689



21.6712, -1.1563, 1.1774

Same Dimension

The Same Dimension uses a secret algorithm to generate beautiful new colors.



30.9715, -0.2249, 3.7988



39.9221, 0.1735, 5.5178



32.3707, -2.5629, 5.2806



15.7069, -0.3145, 1.6468



21.9152, 19.8203, 13.8511



49.7290, 50.5395, 31.5276

Inverse Universe

The Inverse Universe completely reimagines the original color for something new.



31.1909, -2.9196, -0.5169



40.2710, -4.1140, -1.3483



29.7838, -0.5873, -2.2732



15.7888, -1.3188, 0.0383



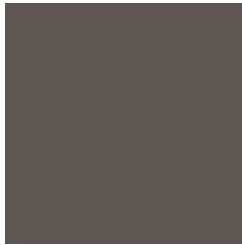
23.3849, -2.9821, -22.7916



53.1192, -4.3974, -56.9017

Previews

White Background



This preview shows how the HunterLab color 30.9708, -0.2240, 3.7983 looks on a white background.

Color Contrast Check

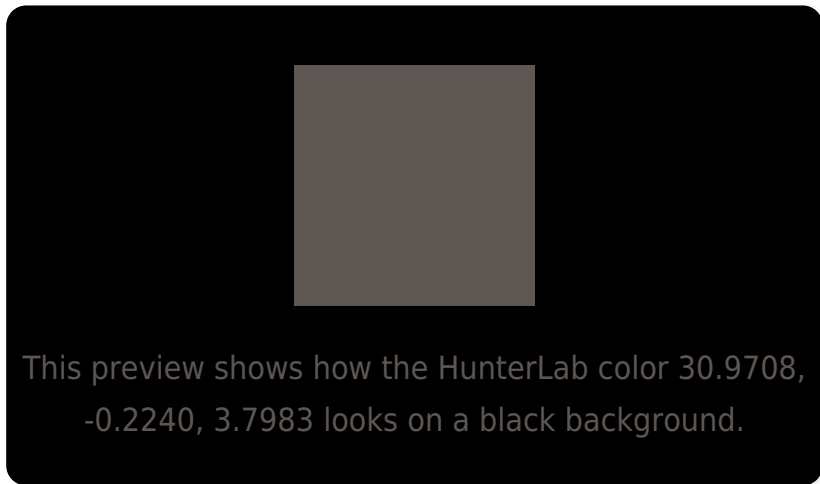
Large Text (above 18pt) WCAG AA ✓ Pass

Any Text WCAG AA ✓ Pass

Large Text (above 18pt) WCAG AAA ✓ Pass

Any Text WCAG AAA ✓ Pass

Black Background



Color Contrast Check

Large Text (above 18pt) WCAG AA × Fail

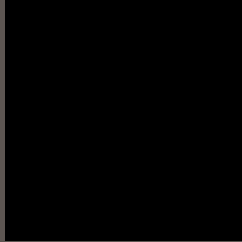
Any Text WCAG AA × Fail

Large Text (above 18pt) WCAG AAA × Fail

Any Text WCAG AAA × Fail

If you want to check with other color combinations, try the [Color Contrast Checker](#).

HunterLab 30.9708, -0.2240, 3.7983 Background



This preview shows how black text looks on a background with the HunterLab color 30.9708, -0.2240, 3.7983.



This preview shows how white text looks on a background with the HunterLab color 30.9708, -0.2240,

3.7983.

Color Blindness Simulation

Color vision deficiency is a very complex topic, and I could not describe the different causes any better than Wikipedia does, so if you want to learn more, you should check out their [article about color blindness](#).

Dichromacy



Original Color

30.9708, -0.2240, 3.7983

Protanopia

31.0074, -1.3821, 3.4343

Deuteranopia

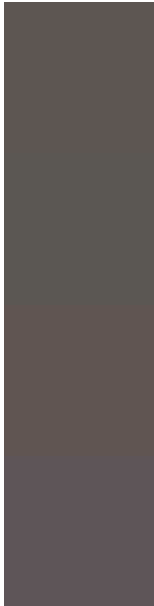
30.8974, 2.1433, 3.7582



Tritanopia

31.0355, 1.7816, 0.2469

Trichromacy



Original Color

30.9708, -0.2240, 3.7983

Protanomaly

31.0887, -1.1004, 3.5303

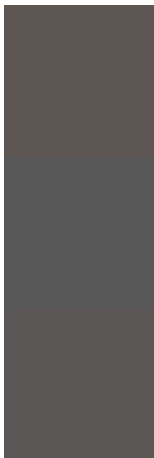
Deuteranomaly

30.9726, 1.0977, 3.8234

Tritanomaly

30.9536, 1.3416, 1.4126

Monochromacy



Original Color

30.9708, -0.2240, 3.7983

Achromatopsia

31.2390, -1.6668, 1.6973

Achromatomaly

31.0837, -0.9655, 2.3435

CSS Examples

Text

The CSS property to change the color of the text to HunterLab 30.9708, -0.2240, 3.7983 is called "color". The color property can be set on classes, ids or directly on the HTML element.

This example shows how text in the color `rgb(93, 86, 82)` looks like.

```
.text, #text, p{  
    color:rgb(93, 86, 82)  
}
```

If you want to add a text shadow in that color use the text-shadow property, you can generate a text shadow directly with our [CSS Text Shadow Generator](#).

Here you see how black text with a 4 pixel rgb(93, 86, 82) colored shadow looks like.

```
.shadow{ text-shadow: 4px 4px 2px rgb(93, 86, 82) }
```

Border

The CSS property to change the border of an element to HunterLab 30.9708, -0.2240, 3.7983 is called "border". The border property can be set on classes, ids or directly on the HTML element.

This example shows the color as border, it can be applied via the CSS property "border" or "border-color".

```
.border, #border, table{ border:4px solid rgb(93, 86, 82) }
```


If only the border color should be changed use the property `border-color`.

```
.border{ border-color:rgb(93, 86, 82) }
```

If you want to add a box shadow in that color use:

Here you see how a box with a 4 pixel `rgb(93, 86, 82)` colored shadow looks like.

```
.boxshadow{ -moz-box-shadow:4px 4px 4px  
4px rgb(93, 86, 82); -webkit-box-  
shadow:4px 4px 4px 4px rgb(93, 86, 82);  
box-shadow:4px 4px 4px 4px rgb(93, 86, 82)  
}
```

Background

The CSS property to change the background color of an element to HunterLab 30.9708, -0.2240, 3.7983 is called "background". The background property can be set on classes, ids or directly on the HTML element.

```
.background, #background, body{  
background: rgb(93, 86, 82) }
```

If only the background color should be changed can be used:

```
.background{ background-color: rgb(93, 86,  
82) }
```

This example shows the color as background, it is applied via the CSS property "background".

To optimize and compress your CSS code, you can use our [online CSS compressor and optimizer](#) based on csstidy. If you want to create a linear or radial gradient as background or border, check our [CSS Gradient Generator](#).

Hey! You found this booklet interesting? Support Converting Colors with the new Membership Option!

The pro membership hides all ads, plus gives you double the colors in the color bucket, and more awesome pro features!

[Learn more, Memberships starting at \\$2.50/m!](#)

**Follow me
on Twitter!**

@ConvertingColor