

Converting Colors

HunterLab(31.0346, 1.5012,
6.2321)

Have a look what the booklet for
HunterLab(31.0346, 1.5012, 6.2321)
contains.

HunterLab(31.0990, 1.2443, 6.1492)	3
<i>Conversions</i>	4
<i>Details</i>	6
<i>Harmonies</i>	12
<i>Previews</i>	24
<i>Color Blindness Simulation</i>	28
<i>CSS Examples</i>	31

Color

**HunterLab(31.0990, 1.2443,
6.1492)**

Conversions

Conversions Part 1

Format	Color
Hex	63554C
RGB	99, 85, 76
RGB Percent	39%, 33%, 30%
CMY	0.6118, 0.6667, 0.7020
CMYK	0.00, 0.14, 0.23, 0.61
HSL	23°, 13%, 34%
HSV	23°, 23%, 39%
XYZ	9.6986, 9.6715, 8.1931
YIQ	88.1600, 11.2330, 0.1690

Conversions

Conversions Part 2

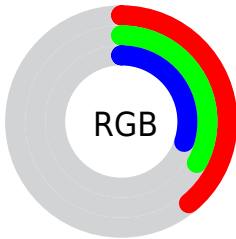
Format	Color
R_{YB}	99, 91, 76
Decimal	6509900
CIE Lab	37.25, 4.14, 7.37
CIE LCh	37, 8.450, 60.694
Yxy	9.6719, 0.3519, 0.3509
Android (android.graphics.Color)	4284699980 (0xFF63554C)
YUV	88.1600, -5.9949, 9.5067
Hunter-Lab	31.0990, 1.2443, 6.1492

Details

The HunterLab color **31.0990, 1.2443, 6.1492** is a dark color, and the websafe version is hex **666666**. A complement of this color would be **31.2242, -3.8277, -3.2418**, and the grayscale version is **31.3168, -1.6710, 1.7015**.

A 20% lighter version of the original color is **50.2918, 0.5204, 8.1252**, and **15.3360, 1.5115, 4.1935** is the 20% darker color. If you saturate the color by 10%, you get **29.3870, 2.7925, 7.7265**, and if you desaturate by 10%, it is **32.8784, -0.1798, 4.4176**.

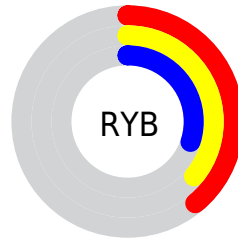
Distribution



 Red (39%)

 Green (33%)

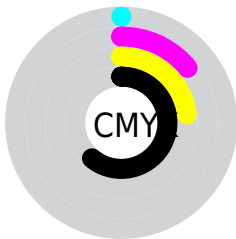
 Blue (30%)



 Red (39%)

 Yellow (36%)

 Blue (30%)

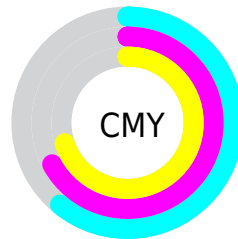


 Cyan (0%)

 Magenta (14%)

 Yellow (23%)

 Black (61%)



 Cyan (61%)

 Magenta (67%)

 Yellow (70%)

Brightness & Saturation Gradients

These gradients show how the HunterLab color 31.0990, 1.2443, 6.1492 changes by changing the brightness by 10 percent. The first figure shows a shift by +10% for each color and the second figure -10%.

Similar to the brightness gradients but the following saturation gradients show a change of the HunterLab color 31.0990, 1.2443, 6.1492 by changing the saturation by 10% instead.

■ 31.0990, 1.2443,
6.1492

■ 31.0990, 1.2443,
6.1492

137.2276, -2.6192,
15.1649

■ 22.7640, 1.4125,
5.1796

■ 50.1762, 0.7098,
8.0770

■ 15.3441, 1.5003,
4.1853

■ 60.7948, 0.3610,
9.0491

■ 8.9571, 1.5375,
3.8977

■ 72.0718, -0.0355,
10.0320

0.0000, NaN, NaN

0.0000, NaN, NaN

■ 83.9710, -0.4757,
11.0279

0.0000, NaN, NaN

■ 96.4613, -0.9566,
12.0383

0.0000, NaN, NaN

0.0000, NaN, NaN

109.5161, -1.4755,

13.0643

0.0000, NaN, NaN

123.1117, -2.0303,
14.1063

■ 31.0990, 1.2443,
6.1492

■ 31.0990, 1.2443,
6.1492

■ 29.3870, 2.7925,
7.7265

■ 32.8784, -0.1798,
4.4176

■ 27.7470, 4.4759,
9.1262

■ 34.7171, -1.4860,
2.5493

■ 26.1877, 6.2986,
10.3244

■ 36.6103, -2.6850,
0.5611

■ 24.7174, 8.2616,
11.2944

■ 38.5536, -3.7862,
-1.5331

■ 23.3456, 10.3584,
12.0097

■ 40.5427, -4.7987,
-3.7216

■ 22.0819, 12.5725,
12.4466

■ 42.5741, -5.7309,
-5.9944

■ 20.9344, 14.8649,
12.6150

■ 44.6446, -6.5904,
-8.3432

■ 20.2169, 16.3856,
12.7444

■ 46.7516, -7.3843,
-10.7606

■ 48.8926, -8.1188,
-13.2407

Harmonies

Analogous

The Analogous color harmony consists of three colors that are next to each other on the color wheel.



31.0997, 3.5108, 4.3919



31.0990, 1.2443, 6.1492



31.0997, -1.7316, 6.7419

Triad

The Triadic color harmony groups three colors that are evenly spaced from another and form a triangle on the color wheel.



31.0997, 1.2433, 6.1497



31.0997, -7.2767, 1.6256



31.0997, 1.3701, -3.4618

Complementary

The Complementary color scheme is a pair of colors which are on the opposite of each other on the color wheel.



31.0990, 1.2443, 6.1492



31.2242, -3.8277, -3.2418

Split Complementary

Split-complementary colors differ from the complementary color scheme. The scheme consists of three colors, the original color and two neighbors of the complement color.



31.0997, -1.5904, -4.3766



31.0990, 1.2443, 6.1492



31.0997, -6.5156, -1.2722

Square

The Square scheme is like the rectangle color scheme, but the four colors are evenly spaced on the color wheel.



31.0997, 1.2433, 6.1497



31.0997, -6.5818, 4.2861



31.0997, -4.4626, -3.5401



31.0997, 3.5860, -1.1449

Rectangle

The Rectangle color scheme consists of four colors that form a rectangle on the color wheel.



31.0990, 1.2443, 6.1492



31.0997, -3.6939, 6.4454



31.0997, -4.4626, -3.5401



31.0997, 0.4253, -3.9529

Sweetspot

The Sweet Spot groups the original color and five complimentary colors.



31.0997, 1.2433, 6.1497



44.5062, -1.2850, 4.3298



29.2626, 7.2488, -1.5234



21.6647, -0.6028, 2.1454



72.2857, -3.8570, 3.9274



22.5557, -1.2035, 1.2255

Same Dimension

The Same Dimension uses a secret algorithm to generate beautiful new colors.



31.0997, 1.2433, 6.1497



39.4728, 2.7369, 9.2311



34.0562, -3.7149, 9.0162



16.5334, -0.3758, 1.7750



22.9191, 19.1217, 14.4574



51.4254, 48.2223, 32.5323

Inverse Universe

The Inverse Universe completely reimagines the original color for something new.



31.2242, -3.8277, -3.2418



39.6720, -5.4389, -5.9132



28.2558, 1.1283, -7.3389



16.5573, -1.3396, -0.0095



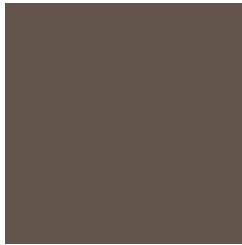
23.1154, -1.6850, -25.2547



51.7641, -1.1217, -62.2791

Previews

White Background



This preview shows how the HunterLab color 31.0990, 1.2443, 6.1492 looks on a white background.

Color Contrast Check

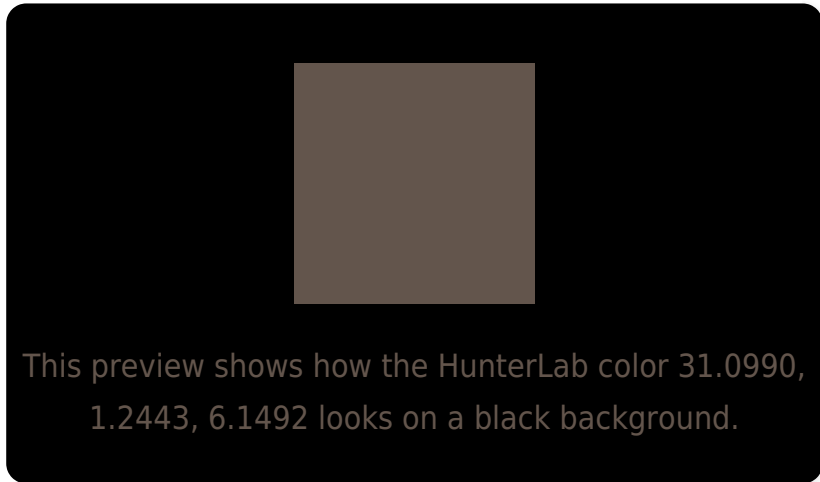
Large Text (above 18pt) WCAG AA ✓ Pass

Any Text WCAG AA ✓ Pass

Large Text (above 18pt) WCAG AAA ✓ Pass

Any Text WCAG AAA ✓ Pass

Black Background



Color Contrast Check

Large Text (above 18pt) WCAG AA × Fail

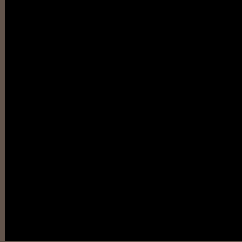
Any Text WCAG AA × Fail

Large Text (above 18pt) WCAG AAA × Fail

Any Text WCAG AAA × Fail

If you want to check with other color combinations, try the [Color Contrast Checker](#).

HunterLab 31.0990, 1.2443, 6.1492 Background



This preview shows how black text looks on a background with the HunterLab color 31.0990, 1.2443, 6.1492.



This preview shows how white text looks on a background with the HunterLab color 31.0990, 1.2443,

Color Blindness Simulation

Color vision deficiency is a very complex topic, and I could not describe the different causes any better than Wikipedia does, so if you want to learn more, you should check out their [article about color blindness](#).

Dichromacy



Original Color

31.0990, 1.2443, 6.1492

Protanopia

31.0283, -1.5956, 5.6752

Deuteranopia

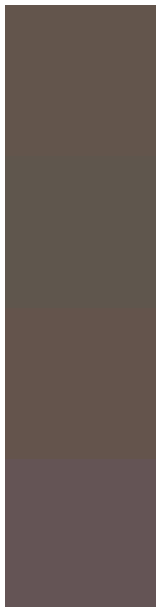
30.9383, 1.9978, 5.9957



Tritanopia

31.1310, 4.6110, 0.8412

Trichromacy



Original Color

31.0990, 1.2443, 6.1492

Protanomaly

31.0230, -0.2815, 5.6927

Deuteranomaly

30.9383, 1.9978, 5.9957

Tritanomaly

31.1542, 3.1513, 2.8963

Monochromacy



Original Color

31.0990, 1.2443, 6.1492

Achromatopsia

31.2390, -1.6668, 1.6973

Achromatomaly

31.1958, -0.6804, 3.2697

CSS Examples

Text

The CSS property to change the color of the text to HunterLab 31.0990, 1.2443, 6.1492 is called "color". The color property can be set on classes, ids or directly on the HTML element.

This example shows how text in the color `rgb(99, 85, 76)` looks like.

```
.text, #text, p{  
    color:rgb(99, 85, 76)  
}
```

If you want to add a text shadow in that color use the text-shadow property, you can generate a text shadow directly with our [CSS Text Shadow Generator](#).

Here you see how black text with a 4 pixel rgb(99, 85, 76) colored shadow looks like.

```
.shadow{ text-shadow: 4px 4px 2px rgb(99, 85, 76) }
```

Border

The CSS property to change the border of an element to HunterLab 31.0990, 1.2443, 6.1492 is called "border". The border property can be set on classes, ids or directly on the HTML element.

This example shows the color as border, it can be applied via the CSS property "border" or "border-color".

```
.border, #border, table{ border:4px solid rgb(99, 85, 76) }
```


If only the border color should be changed use the property `border-color`.

```
.border{ border-color:rgb(99, 85, 76) }
```

If you want to add a box shadow in that color use:

Here you see how a box with a 4 pixel `rgb(99, 85, 76)` colored shadow looks like.

```
.boxshadow{ -moz-box-shadow:4px 4px 4px  
4px rgb(99, 85, 76); -webkit-box-  
shadow:4px 4px 4px 4px rgb(99, 85, 76);  
box-shadow:4px 4px 4px 4px rgb(99, 85, 76)  
}
```

Background

The CSS property to change the background color of an element to HunterLab 31.0990, 1.2443, 6.1492 is called "background". The background property can be set on classes, ids or directly on the HTML element.

```
.background, #background, body{  
background: rgb(99, 85, 76) }
```

If only the background color should be changed can be used:

```
.background{ background-color: rgb(99, 85,  
76) }
```

This example shows the color as background, it is applied via the CSS property "background".

To optimize and compress your CSS code, you can use our [online CSS compressor and optimizer](#) based on csstidy. If you want to create a linear or radial gradient as background or border, check our [CSS Gradient Generator](#).

Hey! You found this booklet interesting? Support Converting Colors with the new Membership Option!

The pro membership hides all ads, plus gives you double the colors in the color bucket, and more awesome pro features!

[Learn more, Memberships starting at \\$2.50/m!](#)

**Follow me
on Twitter!**

@ConvertingColor