

Converting Colors

HunterLab(31.0707, -0.4703,
2.9524)

Have a look what the booklet for
HunterLab(31.0707, -0.4703, 2.9524)
contains.

HunterLab(31.1958, -0.6804, 3.2697)	3
<i>Conversions</i>	4
<i>Details</i>	6
<i>Harmonies</i>	12
<i>Previews</i>	24
<i>Color Blindness Simulation</i>	28
<i>CSS Examples</i>	31

Color

**HunterLab(31.1958, -0.6804,
3.2697)**

Conversions

Conversions Part 1

Format	Color
Hex	5C5754
RGB	92, 87, 84
RGB Percent	36%, 34%, 33%
CMY	0.6392, 0.6588, 0.6706
CMYK	0.00, 0.05, 0.09, 0.64
HSL	23°, 5%, 35%
HSV	23°, 9%, 36%
XYZ	9.4220, 9.7318, 9.7693
YIQ	88.1530, 3.9430, 0.1270

Conversions

Conversions Part 2

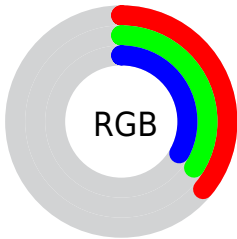
Format	Color
R_{YB}	92, 89, 84
Decimal	6051668
CIE Lab	37.36, 1.42, 2.46
CIE LCh	37, 2.838, 60.029
Yxy	9.7322, 0.3258, 0.3365
Android (android.graphics.Color)	4284241748 (0xFF5C5754)
YUV	88.1530, -2.0474, 3.3738
Hunter-Lab	31.1958, -0.6804, 3.2697

Details

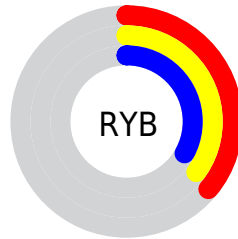
The HunterLab color **31.1958, -0.6804, 3.2697** is a dark color, and the websafe version is hex **666666**. A complement of this color would be **31.3083, -2.5635, 0.0724**, and the grayscale version is **31.3020, -1.6702, 1.7007**.

A 20% lighter version of the original color is **50.3344, -1.7879, 4.8461**, and **15.4378, -0.1808, 2.1377** is the 20% darker color. If you saturate the color by 10%, you get **29.5014, 0.6386, 4.8836**, and if you desaturate by 10%, it is **32.9456, -1.8990, 1.5469**.

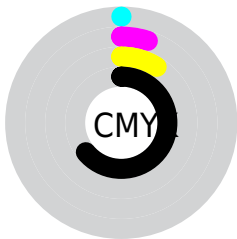
Distribution



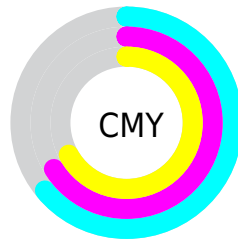
- Red (36%)
- Green (34%)
- Blue (33%)



- Red (36%)
- Yellow (35%)
- Blue (33%)



- Cyan (0%)
- Magenta (5%)
- Yellow (9%)
- Black (64%)



- Cyan (64%)
- Magenta (66%)
- Yellow (67%)

Brightness & Saturation Gradients

These gradients show how the HunterLab color 31.1958, -0.6804, 3.2697 changes by changing the brightness by 10 percent. The first figure shows a shift by +10% for each color and the second figure -10%.

Similar to the brightness gradients but the following saturation gradients show a change of the HunterLab color 31.1958, -0.6804, 3.2697 by changing the saturation by 10% instead.

■ 31.1958, -0.6804,
3.2697

■ 31.1958, -0.6804,
3.2697

■ 137.3863, -5.7296,
10.0990

■ 22.8512, -0.3313,
2.6522

■ 50.2897, -1.5330,
4.5943

■ 15.4206, -0.0419,
2.0624

■ 60.9158, -2.0251,
5.2999

■ 9.0251, 0.2026,
1.6206

■ 72.1999, -2.5568,
6.0336

0.0000, NaN, NaN

0.0000, NaN, NaN

■ 84.1058, -3.1253,
6.7948

0.0000, NaN, NaN

■ 96.6024, -3.7286,
7.5826

0.0000, NaN, NaN

109.6632, -4.3648,

0.0000, NaN, NaN

8.3964

0.0000, NaN, NaN

123.2648, -5.0322,
9.2354

■ 31.1958, -0.6804,
3.2697

■ 31.1958, -0.6804,
3.2697

■ 29.5014, 0.6386,
4.8836

■ 32.9456, -1.8990,
1.5469

■ 27.8659, 2.0692,
6.3713

■ 34.7441, -3.0235,
-0.2731

■ 26.2963, 3.6184,
7.7150

■ 36.5877, -4.0633,
-2.1784

■ 24.7995, 5.2921,
8.8936

■ 38.4728, -5.0264,
-4.1596

■ 23.3835, 7.0928,
9.8834

■ 40.3962, -5.9204,
-6.2089

■ 22.0572, 9.0172,
10.6595

■ 42.3551, -6.7518,
-8.3195

■ 20.8298, 11.0534,
11.1976

■ 44.3470, -7.5268,
-10.4857

■ 19.7111, 13.1776,
11.4781

■ 46.3698, -8.2509,
-12.7027

■ 18.6976, 15.2921,
11.6798

■ 48.4215, -8.9289,
-14.9664

Harmonies

Analogous

The Analogous color harmony consists of three colors that are next to each other on the color wheel.



31.1965, 0.0485, 2.6167



31.1958, -0.6804, 3.2697



31.1965, -1.6672, 3.5053

Triad

The Triadic color harmony groups three colors that are evenly spaced from another and form a triangle on the color wheel.



31.1965, -0.6812, 3.2702



31.1965, -3.6018, 1.6972



31.1965, -0.6795, 0.0407

Complementary

The Complementary color scheme is a pair of colors which are on the opposite of each other on the color wheel.



31.1958, -0.6804, 3.2697



31.3083, -2.5635, 0.0724

Split Complementary

Split-complementary colors differ from the complementary color scheme. The scheme consists of three colors, the original color and two neighbors of the complement color.



31.1965, -1.6653, -0.2241



31.1958, -0.6804, 3.2697



31.1965, -3.3448, 0.7508

Square

The Square scheme is like the rectangle color scheme, but the four colors are evenly spaced on the color wheel.



31.1965, -0.6812, 3.2702



31.1965, -3.3457, 2.6151



31.1965, -2.6392, 0.0397



31.1965, 0.0496, 0.7524

Rectangle

The Rectangle color scheme consists of four colors that form a rectangle on the color wheel.



31.1958, -0.6804, 3.2697



31.1965, -2.3346, 3.3992



31.1965, -2.6392, 0.0397



31.1965, -0.9922, -0.1045

Sweetspot

The Sweet Spot groups the original color and five complimentary colors.



31.1965, -0.6812, 3.2702



42.5593, -1.8193, 3.0663



30.5589, 1.3707, 0.4885



21.2343, -0.8583, 1.6103



71.2094, -3.7996, 3.8689



21.6712, -1.1563, 1.1774

Same Dimension

The Same Dimension uses a secret algorithm to generate beautiful new colors.



31.1965, -0.6812, 3.2702



40.9030, -0.6275, 4.6829



32.2278, -2.3998, 4.3857



15.7191, -0.3351, 1.6601



22.1096, 19.3142, 13.9620



50.1720, 49.3369, 31.7795

Inverse Universe

The Inverse Universe completely reimagines the original color for something new.



31.3083, -2.5635, 0.0724



41.0783, -3.5776, -0.3287



30.2740, -0.8470, -1.1900



15.7763, -1.2985, 0.0234



23.0522, -2.4505, -23.5233



52.3024, -3.0543, -58.7802

Previews

White Background



This preview shows how the HunterLab color 31.1958, -0.6804, 3.2697 looks on a white background.

Color Contrast Check

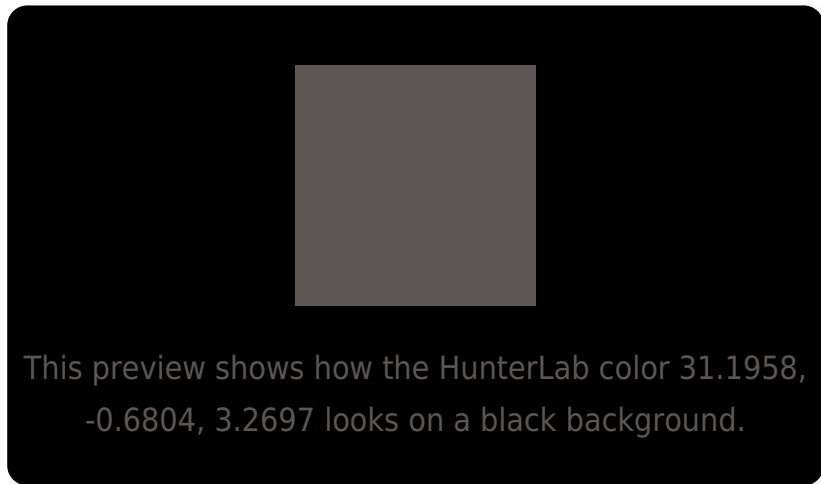
Large Text (above 18pt) WCAG AA ✓ Pass

Any Text WCAG AA ✓ Pass

Large Text (above 18pt) WCAG AAA ✓ Pass

Any Text WCAG AAA ✓ Pass

Black Background



Color Contrast Check

Large Text (above 18pt) WCAG AA × Fail

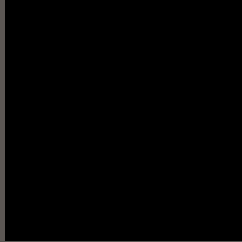
Any Text WCAG AA × Fail

Large Text (above 18pt) WCAG AAA × Fail

Any Text WCAG AAA × Fail

If you want to check with other color combinations, try the [Color Contrast Checker](#).

HunterLab 31.1958, -0.6804, 3.2697 Background



This preview shows how black text looks on a background with the HunterLab color 31.1958, -0.6804, 3.2697.



This preview shows how white text looks on a background with the HunterLab color 31.1958, -0.6804,

Color Blindness Simulation

Color vision deficiency is a very complex topic, and I could not describe the different causes any better than Wikipedia does, so if you want to learn more, you should check out their [article about color blindness](#).

Dichromacy



Original Color

31.1958, -0.6804, 3.2697

Protanopia

31.2941, -1.6814, 3.3628

Deuteranopia

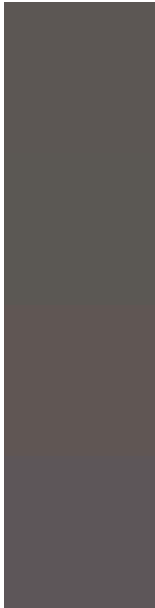
31.1990, 1.9615, 3.3195



Tritanopia

31.2337, 1.1979, 0.0466

Trichromacy



Original Color

31.1958, -0.6804, 3.2697

Protanomaly

31.3747, -1.4015, 3.4582

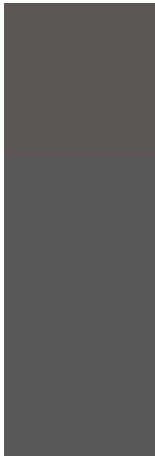
Deuteranomaly

31.2769, 0.9202, 3.3891

Tritanomaly

31.1512, 0.7531, 1.2200

Monochromacy



Original Color

31.1958, -0.6804, 3.2697

Achromatopsia

31.2390, -1.6668, 1.6973

Achromatomaly

31.2912, -1.5378, 2.1697

CSS Examples

Text

The CSS property to change the color of the text to HunterLab 31.1958, -0.6804, 3.2697 is called "color". The color property can be set on classes, ids or directly on the HTML element.

This example shows how text in the color `rgb(92, 87, 84)` looks like.

```
.text, #text, p{  
    color:rgb(92, 87, 84)  
}
```

If you want to add a text shadow in that color use the text-shadow property, you can generate a text shadow directly with our [CSS Text Shadow Generator](#).

Here you see how black text with a 4 pixel rgb(92, 87, 84) colored shadow looks like.

```
.shadow{ text-shadow: 4px 4px 2px rgb(92, 87, 84) }
```

Border

The CSS property to change the border of an element to HunterLab 31.1958, -0.6804, 3.2697 is called "border". The border property can be set on classes, ids or directly on the HTML element.

This example shows the color as border, it can be applied via the CSS property "border" or "border-color".

```
.border, #border, table{ border:4px solid rgb(92, 87, 84) }
```


If only the border color should be changed use the property `border-color`.

```
.border{ border-color:rgb(92, 87, 84) }
```

If you want to add a box shadow in that color use:

Here you see how a box with a 4 pixel `rgb(92, 87, 84)` colored shadow looks like.

```
.boxshadow{ -moz-box-shadow:4px 4px 4px  
4px rgb(92, 87, 84); -webkit-box-  
shadow:4px 4px 4px 4px rgb(92, 87, 84);  
box-shadow:4px 4px 4px 4px rgb(92, 87, 84)  
}
```

Background

The CSS property to change the background color of an element to HunterLab 31.1958, -0.6804, 3.2697 is called "background". The background property can be set on classes, ids or directly on the HTML element.

```
.background, #background, body{  
background: rgb(92, 87, 84) }
```

If only the background color should be changed can be used:

```
.background{ background-color: rgb(92, 87,  
84) }
```

This example shows the color as background, it is applied via the CSS property "background".

To optimize and compress your CSS code, you can use our [online CSS compressor and optimizer](#) based on csstidy. If you want to create a linear or radial gradient as background or border, check our [CSS Gradient Generator](#).

Hey! You found this booklet interesting? Support Converting Colors with the new Membership Option!

The pro membership hides all ads, plus gives you double the colors in the color bucket, and more awesome pro features!

[Learn more, Memberships starting at \\$2.50/m!](#)

**Follow me
on Twitter!**

@ConvertingColor