

Converting Colors

HunterLab(31.1877, 0.4651,
9.4991)

Have a look what the booklet for
HunterLab(31.1877, 0.4651, 9.4991)
contains.

HunterLab(31.3299, 0.3124, 9.5567)	3
<i>Conversions</i>	4
<i>Details</i>	6
<i>Harmonies</i>	12
<i>Previews</i>	24
<i>Color Blindness Simulation</i>	28
<i>CSS Examples</i>	31

Color

**HunterLab(31.3299, 0.3124,
9.5567)**

Conversions

Conversions Part 1

Format	Color
Hex	655642
RGB	101, 86, 66
RGB Percent	40%, 34%, 26%
CMY	0.6039, 0.6627, 0.7412
CMYK	0.00, 0.15, 0.35, 0.60
HSL	34°, 21%, 33%
HSV	34°, 35%, 40%
XYZ	9.6780, 9.8156, 6.5388
YIQ	88.2050, 15.3600, -3.0400

Conversions

Conversions Part 2

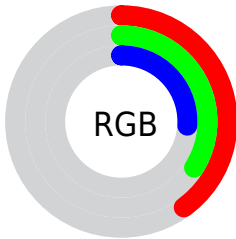
Format	Color
RYB	92, 101, 66
Decimal	6641218
CIELab	37.51, 2.84, 13.94
CIELCh	38, 14.223, 78.500
Yxy	9.8161, 0.3718, 0.3771
Android (android.graphics.Color)	4284831298 (0xFF655642)
YUV	88.2050, -10.9471, 11.2212
Hunter-Lab	31.3299, 0.3124, 9.5567

Details

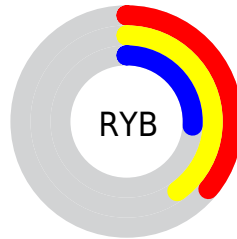
The HunterLab color **31.3299, 0.3124, 9.5567** is a dark color, and the websafe version is hex **666666**. A complement of this color would be **28.2533, -1.8186, -8.4592**, and the grayscale version is **31.3499, -1.6728, 1.7033**.

A 20% lighter version of the original color is **50.5920, -0.4070, 12.5109**, and **15.5068, 0.6713, 6.4676** is the 20% darker color. If you saturate the color by 10%, you get **30.0615, 1.2549, 11.1917**, and if you desaturate by 10%, it is **32.6468, -0.4931, 7.6572**.

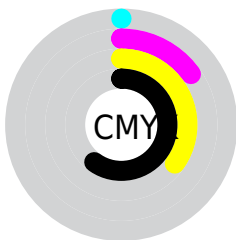
Distribution



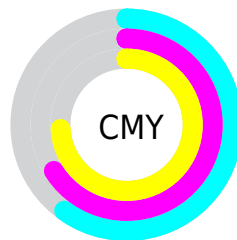
- Red (40%)
- Green (34%)
- Blue (26%)



- Red (36%)
- Yellow (40%)
- Blue (26%)



- Cyan (0%)
- Magenta (15%)
- Yellow (35%)
- Black (60%)



- Cyan (60%)
- Magenta (66%)
- Yellow (74%)

Brightness & Saturation Gradients

These gradients show how the HunterLab color 31.3299, 0.3124, 9.5567 changes by changing the brightness by 10 percent. The first figure shows a shift by +10% for each color and the second figure -10%.

Similar to the brightness gradients but the following saturation gradients show a change of the HunterLab color 31.3299, 0.3124, 9.5567 by changing the saturation by 10% instead.

31.3299, 0.3124,
9.5567

31.3299, 0.3124,
9.5567

137.6061, -4.1243,
21.6726

22.9721, 0.5677,
8.0758

50.4470, -0.3760,
12.3519

15.5267, 0.7528,
6.4901

61.0834, -0.7940,
13.7039

9.1183, 0.8704,
6.3828

72.3773, -1.2558,
15.0402

0.0000, NaN, NaN

0.0000, NaN, NaN

84.2924, -1.7581,
16.3679

0.0000, NaN, NaN

96.7979, -2.2981,
17.6918

0.0000, NaN, NaN

0.0000, NaN, NaN

109.8671, -2.8737,

19.0155

0.0000, NaN, NaN

123.4767, -3.4830,
20.3418

■ 31.3299, 0.3124,
9.5567

■ 31.3299, 0.3124,
9.5567

■ 30.0615, 1.2549,
11.1917

■ 32.6468, -0.4931,
7.6572

■ 28.8424, 2.3429,
12.5424

■ 34.0072, -1.1649,
5.5111

■ 27.6764, 3.5787,
13.5923

■ 35.4089, -1.7113,
3.1372

■ 26.5666, 4.9625,
14.3279

■ 36.8495, -2.1398,
0.5533

■ 25.5157, 6.4903,
14.7421

■ 38.3265, -2.4581,
-2.2240

■ 24.5234, 8.1385,
14.8787

■ 39.8377, -2.6736,
-5.1793

■ 24.0099, 9.0265,
14.9528

■ 41.3811, -2.7933,
-8.2986

■ 42.9547, -2.8241,
-11.5692

■ 44.5570, -2.7721,
-14.9794

Harmonies

Analogous

The Analogous color harmony consists of three colors that are next to each other on the color wheel.



31.3306, 5.1125, 7.9338



31.3299, 0.3124, 9.5567



31.3306, -4.7331, 9.3428

Triad

The Triadic color harmony groups three colors that are evenly spaced from another and form a triangle on the color wheel.



31.3306, 0.3113, 9.5571



31.3306, -10.4643, -1.4105



31.3306, 6.0371, -5.1479

Complementary

The Complementary color scheme is a pair of colors which are on the opposite of each other on the color wheel.



31.3299, 0.3124, 9.5567



28.2533, -1.8186, -8.4592

Split Complementary

Split-complementary colors differ from the complementary color scheme. The scheme consists of three colors, the original color and two neighbors of the complement color.



31.3306, 1.5084, -8.5260



31.3299, 0.3124, 9.5567



31.3306, -7.9268, -6.1409

Square

The Square scheme is like the rectangle color scheme, but the four colors are evenly spaced on the color wheel.



31.3306, 0.3113, 9.5571



31.3306, -10.7392, 3.5136



31.3306, -3.6099, -8.9160



31.3306, 8.5570, -0.2175

Rectangle

The Rectangle color scheme consists of four colors that form a rectangle on the color wheel.



31.3299, 0.3124, 9.5567



31.3306, -7.5631, 8.1786



31.3306, -3.6099, -8.9160



31.3306, 4.6863, -6.5344

Sweetspot

The Sweet Spot groups the original color and five complimentary colors.



31.3306, 0.3113, 9.5571



45.3546, -1.8590, 5.8960



26.9441, 11.1901, -0.4036



22.4068, -0.8857, 3.0774



73.3645, -3.9145, 3.9860



23.4461, -1.2510, 1.2739

Same Dimension

The Same Dimension uses a secret algorithm to generate beautiful new colors.



31.3306, 0.3113, 9.5571



39.6297, 1.4498, 14.3705



35.1208, -6.8434, 12.8200



17.5540, -0.7527, 2.1081



27.3410, 10.6571, 17.0340



61.0133, 27.3832, 38.0755

Inverse Universe

The Inverse Universe completely reimagines the original color for something new.



28.2533, -1.8186, -8.4592



34.6679, -1.8991, -14.8197



24.6518, 5.4057, -14.3266



17.1419, -1.0477, -0.2884



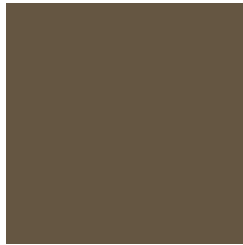
18.5554, 7.7932, -40.0158



40.3576, 22.2357, -98.4440

Previews

White Background



This preview shows how the HunterLab color 31.3299, 0.3124, 9.5567 looks on a white background.

Color Contrast Check

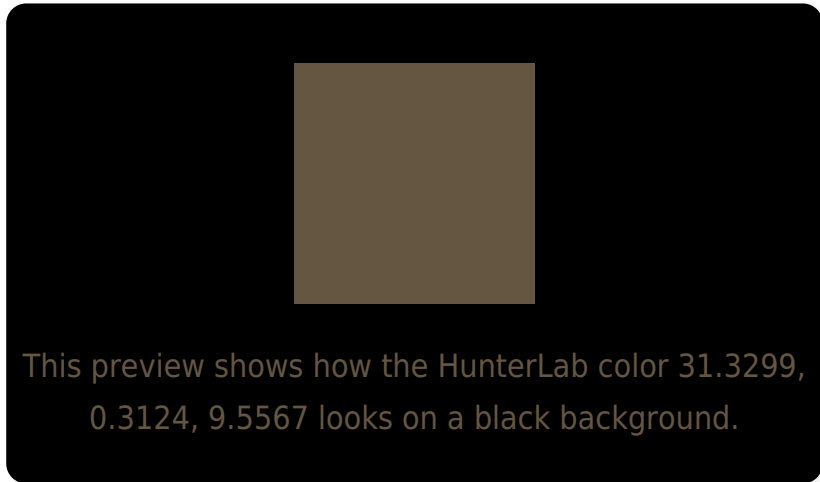
Large Text (above 18pt) WCAG AA ✓ Pass

Any Text WCAG AA ✓ Pass

Large Text (above 18pt) WCAG AAA ✓ Pass

Any Text WCAG AAA ✓ Pass

Black Background



Color Contrast Check

Large Text (above 18pt) WCAG AA × Fail

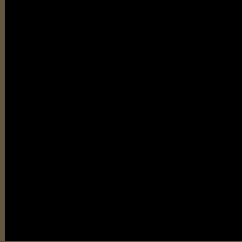
Any Text WCAG AA × Fail

Large Text (above 18pt) WCAG AAA × Fail

Any Text WCAG AAA × Fail

If you want to check with other color combinations, try the [Color Contrast Checker](#).

HunterLab 31.3299, 0.3124, 9.5567 Background



This preview shows how black text looks on a background with the HunterLab color 31.3299, 0.3124, 9.5567.

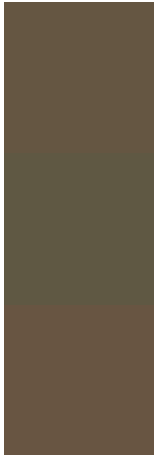


This preview shows how white text looks on a background with the HunterLab color 31.3299, 0.3124,

Color Blindness Simulation

Color vision deficiency is a very complex topic, and I could not describe the different causes any better than Wikipedia does, so if you want to learn more, you should check out their [article about color blindness](#).

Dichromacy



Original Color

31.3299, 0.3124, 9.5567

Protanopia

31.3330, -2.2954, 9.2189

Deuteranopia

31.3583, 1.7088, 9.6074



Tritanopia

31.3860, 5.3896, 1.5805

Trichromacy



Original Color

31.3299, 0.3124, 9.5567

Protanomaly

31.2458, -1.2597, 9.1552

Deuteranomaly

31.2633, 1.3881, 9.5137

Tritanomaly

31.3342, 3.5505, 4.6403

Monochromacy



Original Color

31.3299, 0.3124, 9.5567

Achromatopsia

31.2390, -1.6668, 1.6973

Achromatomaly

31.1813, -0.9258, 4.7666

CSS Examples

Text

The CSS property to change the color of the text to HunterLab 31.3299, 0.3124, 9.5567 is called "color". The color property can be set on classes, ids or directly on the HTML element.

This example shows how text in the color `rgb(101, 86, 66)` looks like.

```
.text, #text, p{  
    color:rgb(101, 86, 66)  
}
```

If you want to add a text shadow in that color use the text-shadow property, you can generate a text shadow directly with our [CSS Text Shadow Generator](#).

Here you see how black text with a 4 pixel rgb(101, 86, 66) colored shadow looks like.

```
.shadow{ text-shadow: 4px 4px 2px rgb(101, 86, 66) }
```

Border

The CSS property to change the border of an element to HunterLab 31.3299, 0.3124, 9.5567 is called "border".

The border property can be set on classes, ids or directly on the HTML element.

This example shows the color as border, it can be applied via the CSS property "border" or "border-color".

```
.border, #border, table{ border:4px solid rgb(101, 86, 66) }
```


If only the border color should be changed use the property `border-color`.

```
.border{ border-color:rgb(101, 86, 66) }
```

If you want to add a box shadow in that color use:

Here you see how a box with a 4 pixel `rgb(101, 86, 66)` colored shadow looks like.

```
.boxshadow{ -moz-box-shadow:4px 4px 4px  
4px rgb(101, 86, 66); -webkit-box-  
shadow:4px 4px 4px 4px rgb(101, 86, 66);  
box-shadow:4px 4px 4px 4px rgb(101, 86,  
66) }
```

Background

The CSS property to change the background color of an element to HunterLab 31.3299, 0.3124, 9.5567 is called "background". The background property can be set on classes, ids or directly on the HTML element.

```
.background, #background, body{  
background: rgb(101, 86, 66) }
```

If only the background color should be changed can be used:

```
.background{ background-color: rgb(101, 86,  
66) }
```

This example shows the color as background, it is applied via the CSS property "background".

To optimize and compress your CSS code, you can use our [online CSS compressor and optimizer](#) based on csstidy. If you want to create a linear or radial gradient as background or border, check our [CSS Gradient Generator](#).

Hey! You found this booklet interesting? Support Converting Colors with the new Membership Option!

The pro membership hides all ads, plus gives you double the colors in the color bucket, and more awesome pro features!

[Learn more, Memberships starting at \\$2.50/m!](#)

**Follow me
on Twitter!**

@ConvertingColor