

Converting Colors

HunterLab(31.3647, 0.2060,
3.1176)

Have a look what the booklet for
HunterLab(31.3647, 0.2060, 3.1176)
contains.

HunterLab(31.3878, 0.0296, 3.1073)	3
<i>Conversions</i>	4
<i>Details</i>	6
<i>Harmonies</i>	12
<i>Previews</i>	24
<i>Color Blindness Simulation</i>	28
<i>CSS Examples</i>	31

Color

**HunterLab(31.3878, 0.0296,
3.1073)**

Conversions

Conversions Part 1

Format	Color
Hex	5E5755
RGB	94, 87, 85
RGB Percent	37%, 34%, 33%
CMY	0.6314, 0.6588, 0.6667
CMYK	0.00, 0.07, 0.10, 0.63
HSL	13°, 5%, 35%
HSV	13°, 10%, 37%
XYZ	9.6640, 9.8519, 9.9866
YIQ	88.8650, 4.8140, 0.8620

Conversions

Conversions Part 2

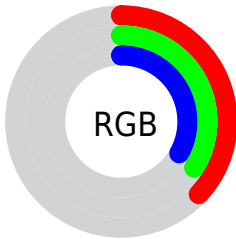
Format	Color
R_{YB}	94, 88, 85
Decimal	6182741
CIE Lab	37.58, 2.44, 2.18
CIE LCh	38, 3.269, 41.752
Yxy	9.8524, 0.3276, 0.3339
Android (android.graphics.Color)	4284372821 (0xFF5E5755)
YUV	88.8650, -1.9054, 4.5034
Hunter-Lab	31.3878, 0.0296, 3.1073

Details

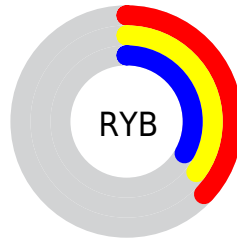
The HunterLab color $[31.3878, 0.0296, 3.1073]$ is a dark color, and the websafe version is hex 666666 . A complement of this color would be $[32.2390, -3.2996, 0.3324]$, and the grayscale version is $[31.5632, -1.6841, 1.7149]$.

A 20% lighter version of the original color is $[50.5667, -0.8757, 4.2677]$, and $[15.6125, 0.4594, 2.0048]$ is the 20% darker color. If you saturate the color by 10%, you get $[29.3061, 2.0281, 4.4075]$, and if you desaturate by 10%, it is $[33.5500, -1.8637, 1.7595]$.

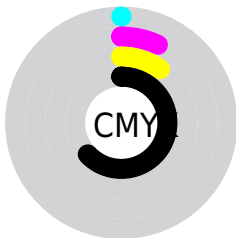
Distribution



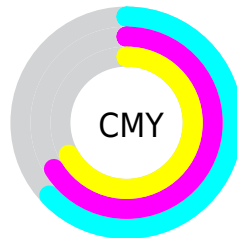
- Red (37%)
- Green (34%)
- Blue (33%)



- Red (37%)
- Yellow (35%)
- Blue (33%)



- Cyan (0%)
- Magenta (7%)
- Yellow (10%)
- Black (63%)



- Cyan (63%)
- Magenta (66%)
- Yellow (67%)

Brightness & Saturation Gradients

These gradients show how the HunterLab color 31.3878, 0.0296, 3.1073 changes by changing the brightness by 10 percent. The first figure shows a shift by +10% for each color and the second figure -10%.

Similar to the brightness gradients but the following saturation gradients show a change of the HunterLab color 31.3878, 0.0296, 3.1073 by changing the saturation by 10% instead.

■ 31.3878, 0.0296,
3.1073

■ 31.3878, 0.0296,
3.1073

■ 137.7008, -4.5816,
9.8203

■ 23.0243, 0.3118,
2.5083

■ 50.5148, -0.7054,
4.4000

■ 15.5725, 0.5267,
1.9398

■ 61.1557, -1.1446,
5.0914

■ 9.1582, 0.6730,
1.4839

■ 72.4537, -1.6263,
5.8119

0.0000, NaN, NaN

0.0000, NaN, NaN

■ 84.3729, -2.1475,
6.5606

0.0000, NaN, NaN

■ 96.8822, -2.7056,
7.3365

0.0000, NaN, NaN

109.9550, -3.2984,

0.0000, NaN, NaN

8.1389

0.0000, NaN, NaN

123.5681, -3.9243,
8.9671

■ 31.3878, 0.0296,
3.1073

■ 31.3878, 0.0296,
3.1073

■ 29.3061, 2.0281,
4.4075

■ 33.5500, -1.8637,
1.7595

■ 27.3129, 4.1435,
5.6465

■ 35.7820, -3.6594,
0.3715

■ 25.4211, 6.3805,
6.8086

■ 38.0774, -5.3689,
-1.0494

■ 23.6447, 8.7384,
7.8724

■ 40.4300, -7.0021,
-2.4984

■ 22.0002, 11.2052,
8.8106

■ 42.8346, -8.5680,
-3.9718

■ 20.5059, 13.7515,
9.5899

■ 45.2870, -10.0748,
-5.4669

■ 19.1817, 16.3237,
10.1733

■ 47.7834, -11.5299,
-6.9814

■ 18.0471, 18.8380,
10.5258

■ 50.3204, -12.9395,
-8.5139

■ 17.1027, 21.1128,
10.8684

■ 52.8953, -14.3093,
-10.0629

Harmonies

Analogous

The Analogous color harmony consists of three colors that are next to each other on the color wheel.



31.3885, 0.5687, 2.1436



31.3878, 0.0296, 3.1073



31.3885, -0.9651, 3.6840

Triad

The Triadic color harmony groups three colors that are evenly spaced from another and form a triangle on the color wheel.



31.3885, 0.0287, 3.1078



31.3885, -3.7958, 2.3748



31.3885, -1.2145, -0.4717

Complementary

The Complementary color scheme is a pair of colors which are on the opposite of each other on the color wheel.



31.3878, 0.0296, 3.1073



32.2390, -3.2996, 0.3324

Split Complementary

Split-complementary colors differ from the complementary color scheme. The scheme consists of three colors, the original color and two neighbors of the complement color.



31.3885, -2.3816, -0.4042



31.3878, 0.0296, 3.1073



31.3885, -3.8603, 1.2672

Square

The Square scheme is like the rectangle color scheme, but the four colors are evenly spaced on the color wheel.



31.3885, 0.0287, 3.1078



31.3885, -3.1685, 3.2717



31.3885, -3.3461, 0.2418



31.3885, -0.1561, 0.0607

Rectangle

The Rectangle color scheme consists of four colors that form a rectangle on the color wheel.



31.3878, 0.0296, 3.1073



31.3885, -1.7456, 3.7839



31.3885, -3.3461, 0.2418



31.3885, -1.6073, -0.5190

Sweetspot

The Sweet Spot groups the original color and five complimentary colors.



31.3885, 0.0287, 3.1078



43.3773, -1.6002, 2.9626



31.0651, 1.9392, -0.1707



21.1427, -0.7046, 1.5069



71.2094, -3.7996, 3.8689



21.6712, -1.1563, 1.1774

Same Dimension

The Same Dimension uses a secret algorithm to generate beautiful new colors.



31.3885, 0.0287, 3.1078



41.0398, 0.4950, 4.4214



32.5500, -1.9287, 4.3685



15.5573, -0.0597, 1.4818



19.9048, 25.4442, 12.7107



45.3362, 63.3352, 29.0447

Inverse Universe

The Inverse Universe completely reimagines the original color for something new.



32.2390, -3.2996, 0.3324



42.3705, -4.7137, 0.0789



31.0570, -1.3595, -1.1033



15.9432, -1.5695, 0.2227



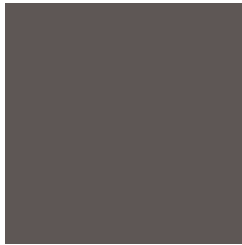
27.6701, -9.3003, -14.5085



63.6955, -20.2997, -35.7926

Previews

White Background



This preview shows how the HunterLab color 31.3878, 0.0296, 3.1073 looks on a white background.

Color Contrast Check

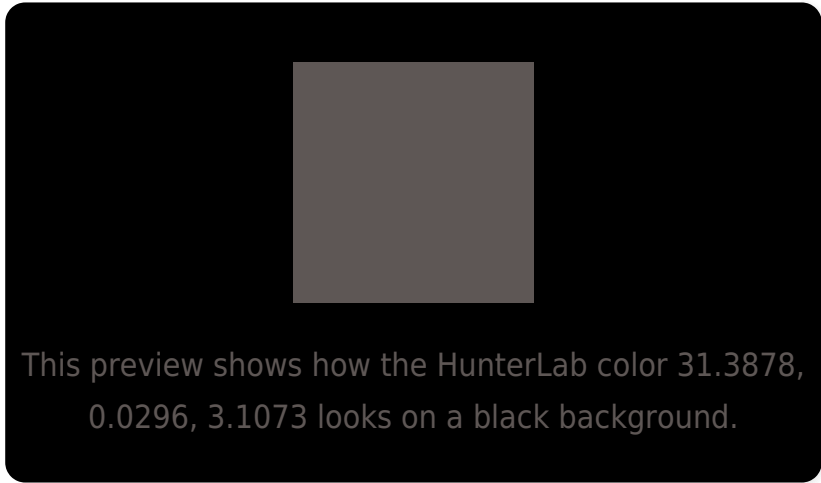
Large Text (above 18pt) WCAG AA ✓ Pass

Any Text WCAG AA ✓ Pass

Large Text (above 18pt) WCAG AAA ✓ Pass

Any Text WCAG AAA ✓ Pass

Black Background



Color Contrast Check

Large Text (above 18pt) WCAG AA × Fail

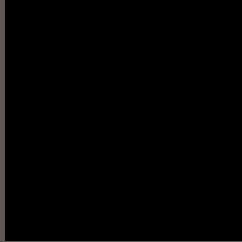
Any Text WCAG AA × Fail

Large Text (above 18pt) WCAG AAA × Fail

Any Text WCAG AAA × Fail

If you want to check with other color combinations, try the [Color Contrast Checker](#).

HunterLab 31.3878, 0.0296, 3.1073 Background



This preview shows how black text looks on a background with the HunterLab color 31.3878, 0.0296, 3.1073.



This preview shows how white text looks on a background with the HunterLab color 31.3878, 0.0296,

Color Blindness Simulation

Color vision deficiency is a very complex topic, and I could not describe the different causes any better than Wikipedia does, so if you want to learn more, you should check out their [article about color blindness](#).

Dichromacy



Original Color

31.3878, 0.0296, 3.1073

Protanopia

31.4253, -1.1248, 2.7337

Deuteranopia

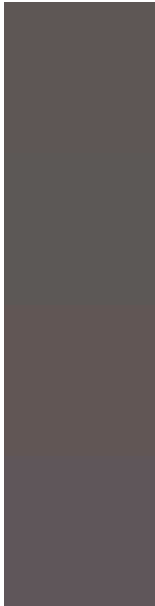
31.2243, 2.0970, 2.9577



Tritanopia

31.4305, 1.9184, -0.1343

Trichromacy



Original Color

31.3878, 0.0296, 3.1073

Protanomaly

31.5066, -0.8438, 2.8316

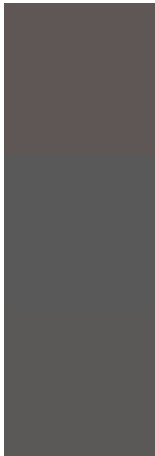
Deuteranomaly

31.3892, 1.3511, 3.1320

Tritanomaly

31.3475, 1.4725, 1.0469

Monochromacy



Original Color

31.3878, 0.0296, 3.1073

Achromatopsia

31.6068, -1.6865, 1.7173

Achromatomaly

31.4773, -0.8412, 1.9912

CSS Examples

Text

The CSS property to change the color of the text to HunterLab 31.3878, 0.0296, 3.1073 is called "color". The color property can be set on classes, ids or directly on the HTML element.

This example shows how text in the color `rgb(94, 87, 85)` looks like.

```
.text, #text, p{  
    color:rgb(94, 87, 85)  
}
```

If you want to add a text shadow in that color use the text-shadow property, you can generate a text shadow directly with our [CSS Text Shadow Generator](#).

Here you see how black text with a 4 pixel rgb(94, 87, 85) colored shadow looks like.

```
.shadow{ text-shadow: 4px 4px 2px rgb(94, 87, 85) }
```

Border

The CSS property to change the border of an element to HunterLab 31.3878, 0.0296, 3.1073 is called "border".

The border property can be set on classes, ids or directly on the HTML element.

This example shows the color as border, it can be applied via the CSS property "border" or "border-color".

```
.border, #border, table{ border:4px solid rgb(94, 87, 85) }
```


If only the border color should be changed use the property border-color.

```
.border{ border-color:rgb(94, 87, 85) }
```

If you want to add a box shadow in that color use:

Here you see how a box with a 4 pixel rgb(94, 87, 85) colored shadow looks like.

```
.boxshadow{ -moz-box-shadow:4px 4px 4px  
4px rgb(94, 87, 85); -webkit-box-  
shadow:4px 4px 4px 4px rgb(94, 87, 85);  
box-shadow:4px 4px 4px 4px rgb(94, 87, 85)  
}
```

Background

The CSS property to change the background color of an element to HunterLab 31.3878, 0.0296, 3.1073 is called "background". The background property can be set on classes, ids or directly on the HTML element.

```
.background, #background, body{  
background: rgb(94, 87, 85) }
```

If only the background color should be changed can be used:

```
.background{ background-color: rgb(94, 87,  
85) }
```

This example shows the color as background, it is applied via the CSS property "background".

To optimize and compress your CSS code, you can use our [online CSS compressor and optimizer](#) based on csstidy. If you want to create a linear or radial gradient as background or border, check our [CSS Gradient Generator](#).

Hey! You found this booklet interesting? Support Converting Colors with the new Membership Option!

The pro membership hides all ads, plus gives you double the colors in the color bucket, and more awesome pro features!

[Learn more, Memberships starting at \\$2.50/m!](#)

**Follow me
on Twitter!**

@ConvertingColor