

# Converting Colors

HunterLab(31.7052, 2.3819,  
9.4727)

Have a look what the booklet for  
HunterLab(31.7052, 2.3819, 9.4727)  
contains.

<b>HunterLab(31.5888, 2.5591, 9.2450)</b> .....	3
<b><i>Conversions</i></b> .....	4
<b><i>Details</i></b> .....	6
<b><i>Harmonies</i></b> .....	12
<b><i>Previews</i></b> .....	24
<b><i>Color Blindness Simulation</i></b> .....	28
<b><i>CSS Examples</i></b> .....	31

# Color

**HunterLab(31.5888, 2.5591,  
9.2450)**

# Conversions

## Conversions Part 1

Format	Color
Hex	6A5544
RGB	106, 85, 68
RGB Percent	42%, 33%, 27%
CMY	0.5843, 0.6667, 0.7333
CMYK	0.00, 0.20, 0.36, 0.58
HSL	27°, 22%, 34%
HSV	27°, 36%, 42%
XYZ	10.2357, 9.9785, 6.8554
YIQ	89.3410, 17.9730, -0.8350

# Conversions

## Conversions Part 2

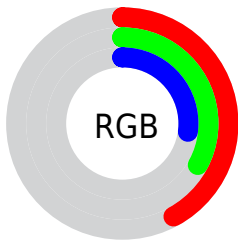
<b>Format</b>	<b>Color</b>
R <sub>Y</sub> B	106, 99, 68
Decimal	6968644
CIE Lab	37.80, 5.97, 13.20
CIE LCh	38, 14.488, 65.672
Yxy	9.9790, 0.3781, 0.3686
Android (android.graphics.Color)	4285158724 (0xFF6A5544)
YUV	89.3410, -10.5211, 14.6099
Hunter-Lab	31.5888, 2.5591, 9.2450

# Details

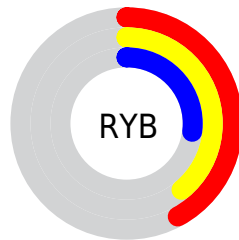
The HunterLab color **31.5888, 2.5591, 9.2450** is a dark color, and the websafe version is hex **666666**. A complement of this color would be **30.6823, -3.9079, -7.5115**, and the grayscale version is **31.7658, -1.6949, 1.7259**.

A 20% lighter version of the original color is **50.8508, 1.9866, 12.1036**, and **15.7712, 2.7236, 6.3083** is the 20% darker color. If you saturate the color by 10%, you get **29.9610, 4.1605, 10.7703**, and if you desaturate by 10%, it is **33.2884, 1.1041, 7.4917**.

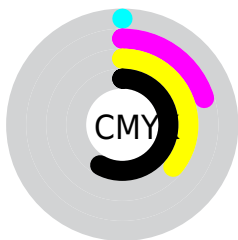
# Distribution



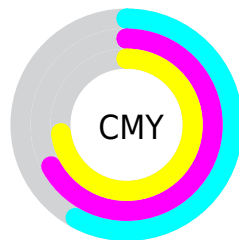
- Red (42%)
- Green (33%)
- Blue (27%)



- Red (42%)
- Yellow (39%)
- Blue (27%)



- Cyan (0%)
- Magenta (20%)
- Yellow (36%)
- Black (58%)



- Cyan (58%)
- Magenta (67%)
- Yellow (73%)

# Brightness & Saturation Gradients

These gradients show how the HunterLab color 31.5888, 2.5591, 9.2450 changes by changing the brightness by 10 percent. The first figure shows a shift by +10% for each color and the second figure -10%.

Similar to the brightness gradients but the following saturation gradients show a change of the HunterLab color 31.5888, 2.5591, 9.2450 by changing the saturation by 10% instead.



■ 31.5888, 2.5591,  
9.2450

■ 31.5888, 2.5591,  
9.2450

138.0297, -0.5424,  
21.0020

■ 23.2057, 2.6133,  
7.8256

■ 50.7503, 2.2270,  
11.9378

■ 15.7318, 2.5757,  
6.3121

■ 61.4067, 1.9700,  
13.2455

■ 9.2953, 2.4224,  
6.3929

■ 72.7193, 1.6605,  
14.5410

0.0000, NaN, NaN

0.0000, NaN, NaN

■ 84.6522, 1.3029,  
15.8305

0.0000, NaN, NaN

■ 97.1747, 0.9011,  
17.1184

0.0000, NaN, NaN

110.2602, 0.4579,

0.0000, NaN, NaN

18.4081

0.0000, NaN, NaN

123.8854, -0.0240,  
19.7021

■ 31.5888, 2.5591,  
9.2450

■ 31.5888, 2.5591,  
9.2450

■ 29.9610, 4.1605,  
10.7703

■ 33.2884, 1.1041,  
7.4917

■ 28.4093, 5.9178,  
12.0405

■ 35.0515, -0.2091,  
5.5332

■ 26.9417, 7.8315,  
13.0299

■ 36.8734, -1.3912,  
3.3918

■ 25.5657, 9.8971,  
13.7142

■ 38.7494, -2.4521,  
1.0871

■ 24.2891, 12.1010,  
14.0754

■ 40.6751, -3.4016,  
-1.3638

■ 23.1150, 14.3968,  
14.1712

■ 42.6467, -4.2493,  
-3.9462

■ 22.6529, 15.3389,  
14.2272

■ 44.6607, -5.0039,  
-6.6469

■ 46.7143, -5.6736,  
-9.4548

■ 48.8048, -6.2660,  
-12.3602

# Harmonies

## Analogous

The Analogous color harmony consists of three colors that are next to each other on the color wheel.



31.5895, 6.8933, 6.7991



31.5888, 2.5591, 9.2450



31.5895, -2.6737, 9.8262

# Triad

The Triadic color harmony groups three colors that are evenly spaced from another and form a triangle on the color wheel.



31.5895, 2.5579, 9.2454



31.5895, -11.0736, 0.7606



31.5895, 4.3857, -7.0687

# Complementary

The Complementary color scheme is a pair of colors which are on the opposite of each other on the color wheel.



31.5888, 2.5591, 9.2450



30.6823, -3.9079, -7.5115

# Split Complementary

Split-complementary colors differ from the complementary color scheme. The scheme consists of three colors, the original color and two neighbors of the complement color.



31.5895, -0.6885, -9.3423



31.5888, 2.5591, 9.2450



31.5895, -9.4396, -4.3749

# Square

The Square scheme is like the rectangle color scheme, but the four colors are evenly spaced on the color wheel.



31.5895, 2.5579, 9.2454



31.5895, -10.3282, 5.4078



31.5895, -5.7194, -8.2842



31.5895, 7.9956, -2.4753



# Rectangle

The Rectangle color scheme consists of four colors that form a rectangle on the color wheel.



31.5888, 2.5591, 9.2450



31.5895, -5.9217, 9.1757



31.5895, -5.7194, -8.2842



31.5895, 2.7828, -8.1609

# Sweetspot

The Sweet Spot groups the original color and five complimentary colors.



31.5895, 2.5579, 9.2454



47.5229, -1.0093, 6.0695



28.1581, 13.0802, -2.5690



22.8930, -0.4177, 3.0637



74.4461, -3.9723, 4.0448



24.3420, -1.2988, 1.3225



# Same Dimension

The Same Dimension uses a secret algorithm to generate beautiful new colors.



31.5895, 2.5579, 9.2454



40.0428, 5.1454, 13.9554



36.4351, -5.5398, 13.4546



18.2180, -0.5196, 2.0474



25.1040, 17.4039, 15.7736



55.1611, 42.9773, 34.7424



# Inverse Universe

The Inverse Universe completely reimagines the original color for something new.



30.6823, -3.9079, -7.5115



38.5758, -5.2481, -13.1031



25.9172, 4.2968, -15.1486



18.1008, -1.3620, -0.1213



22.4744, 1.2422, -30.7725

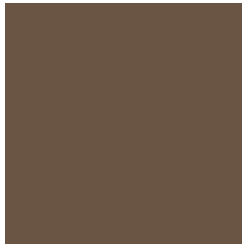


48.9729, 5.9748, -74.1098



# Previews

## White Background



This preview shows how the HunterLab color 31.5888, 2.5591, 9.2450 looks on a white background.

## Color Contrast Check

Large Text (above 18pt) WCAG AA ✓ Pass

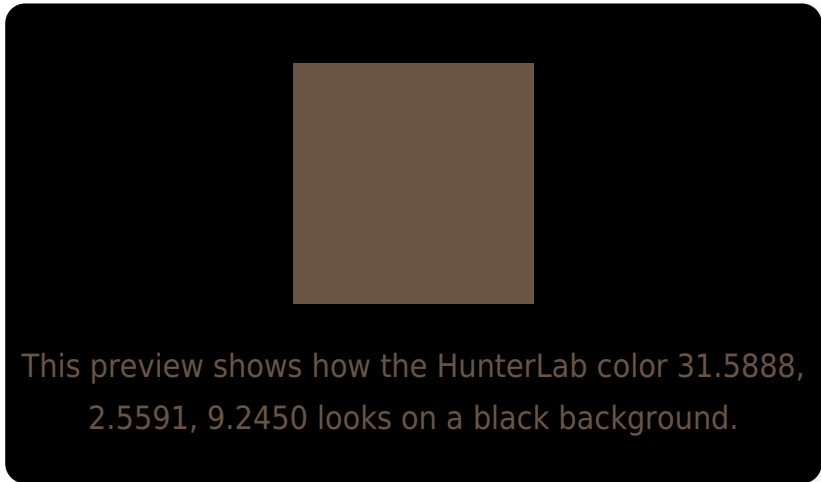
Any Text WCAG AA ✓ Pass

Large Text (above 18pt) WCAG AAA ✓ Pass

Any Text WCAG AAA ✓ Pass



# Black Background



## Color Contrast Check

Large Text (above 18pt) WCAG AA ✓ Pass

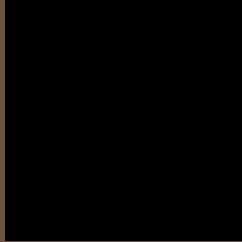
Any Text WCAG AA × Fail

Large Text (above 18pt) WCAG AAA × Fail

Any Text WCAG AAA × Fail

If you want to check with other color combinations, try the [Color Contrast Checker](#).

# HunterLab 31.5888, 2.5591, 9.2450 Background



This preview shows how black text looks on a background with the HunterLab color 31.5888, 2.5591, 9.2450.



This preview shows how white text looks on a background with the HunterLab color 31.5888, 2.5591, 9.2450.



# Color Blindness Simulation

Color vision deficiency is a very complex topic, and I could not describe the different causes any better than Wikipedia does, so if you want to learn more, you should check out their [article about color blindness](#).

## Dichromacy



### Original Color

31.5888, 2.5591, 9.2450

### Protanopia

31.6541, -2.4034, 8.6099

### Deuteranopia

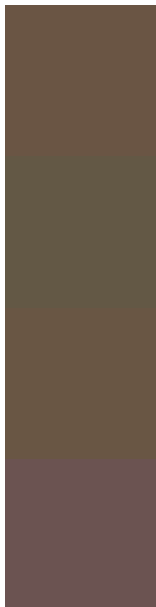
31.7430, 1.7897, 9.3765



## Tritanopia

31.5341, 7.1084, 1.7856

# Trichromacy



## Original Color

31.5888, 2.5591, 9.2450

## Protanomaly

31.7203, -0.8722, 9.0069

## Deuteranomaly

31.7430, 1.7897, 9.3765

## Tritanomaly

31.4744, 5.2727, 4.8225

# Monochromacy



## Original Color

31.5888, 2.5591, 9.2450

## Achromatopsia

31.6068, -1.6865, 1.7173

## Achromatomaly

31.6329, -0.6545, 4.8899

# CSS Examples

## Text

The CSS property to change the color of the text to HunterLab 31.5888, 2.5591, 9.2450 is called "color". The color property can be set on classes, ids or directly on the HTML element.

This example shows how text in the color `rgb(106, 85, 68)` looks like.

```
.text, #text, p{  
    color:rgb(106, 85, 68)  
}
```

If you want to add a text shadow in that color use the text-shadow property, you can generate a text shadow directly with our [CSS Text Shadow Generator](#).

Here you see how black text with a 4 pixel rgb(106, 85, 68) colored shadow looks like.

```
.shadow{ text-shadow: 4px 4px 2px rgb(106, 85, 68) }
```

## Border

The CSS property to change the border of an element to HunterLab 31.5888, 2.5591, 9.2450 is called "border". The border property can be set on classes, ids or directly on the HTML element.

This example shows the color as border, it can be applied via the CSS property "border" or "border-color".

```
.border, #border, table{ border:4px solid rgb(106, 85, 68) }
```



If only the border color should be changed use the property `border-color`.

```
.border{ border-color:rgb(106, 85, 68) }
```

If you want to add a box shadow in that color use:

Here you see how a box with a 4 pixel `rgb(106, 85, 68)` colored shadow looks like.

```
.boxshadow{ -moz-box-shadow:4px 4px 4px  
4px rgb(106, 85, 68); -webkit-box-  
shadow:4px 4px 4px 4px rgb(106, 85, 68);  
box-shadow:4px 4px 4px 4px rgb(106, 85,  
68) }
```

# Background

The CSS property to change the background color of an element to HunterLab 31.5888, 2.5591, 9.2450 is called "background". The background property can be set on classes, ids or directly on the HTML element.

```
.background, #background, body{  
background: rgb(106, 85, 68) }
```

If only the background color should be changed can be used:

```
.background{ background-color: rgb(106, 85,  
68) }
```

This example shows the color as background, it is applied via the CSS property "background".

To optimize and compress your CSS code, you can use our [online CSS compressor and optimizer](#) based on csstidy. If you want to create a linear or radial gradient as background or border, check our [CSS Gradient Generator](#).

Hey! You found this booklet interesting? Support Converting Colors with the new Membership Option!

The pro membership hides all ads, plus gives you double the colors in the color bucket, and more awesome pro features!

**[Learn more, Memberships starting at \\$2.50/m!](#)**

**Follow me  
on Twitter!**

@ConvertingColor