

Converting Colors

HunterLab(31.8732, 6.9629,
2.1810)

Have a look what the booklet for
HunterLab(31.8732, 6.9629, 2.1810)
contains.

HunterLab(31.8732, 6.9629, 2.1810)	3
<i>Conversions</i>	4
<i>Details</i>	6
<i>Harmonies</i>	12
<i>Previews</i>	24
<i>Color Blindness Simulation</i>	28
<i>CSS Examples</i>	31

Color

**HunterLab(31.8732, 6.9629,
2.1810)**

Conversions

Conversions Part 1

Format	Color
Hex	6D5359
RGB	109, 83, 89
RGB Percent	43%, 33%, 35%
CMY	0.5725, 0.6745, 0.6510
CMYK	0.00, 0.24, 0.18, 0.57
HSL	346°, 14%, 38%
HSV	346°, 24%, 43%
XYZ	11.2031, 10.1590, 10.8216
YIQ	91.4580, 13.5700, 7.3780

Conversions

Conversions Part 2

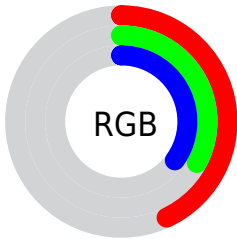
Format	Color
R_{YB}	109, 83, 89
Decimal	7164761
CIE _{Lab}	38.13, 11.85, 0.68
CIE _{LCh}	38, 11.868, 3.285
Yxy	10.1595, 0.3481, 0.3157
Android (android.graphics.Color)	4285354841 (0xFF6D5359)
YUV	91.4580, -1.2118, 15.3843
Hunter-Lab	31.8732, 6.9629, 2.1810

Details

The HunterLab color **31.8732, 6.9629, 2.1810** is a dark color, and the websafe version is hex **666666**. A complement of this color would be **37.0888, -9.6331, 2.1712**, and the grayscale version is **32.5152, -1.7349, 1.7666**.

A 20% lighter version of the original color is **51.2018, 7.1241, 3.3904**, and **16.0005, 6.2721, 1.1395** is the 20% darker color. If you saturate the color by 10%, you get **29.1335, 10.9083, 2.4538**, and if you desaturate by 10%, it is **34.7990, 3.0997, 2.0675**.

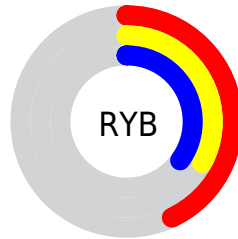
Distribution



Red (43%)

Green (33%)

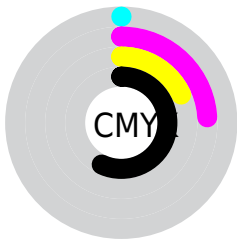
Blue (35%)



Red (43%)

Yellow (33%)

Blue (35%)

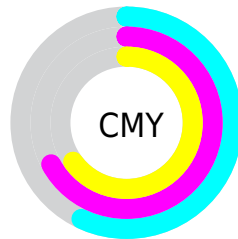


Cyan (0%)

Magenta (24%)

Yellow (18%)

Black (57%)



Cyan (57%)

Magenta (67%)

Yellow (65%)

Brightness & Saturation Gradients

These gradients show how the HunterLab color 31.8732, 6.9629, 2.1810 changes by changing the brightness by 10 percent. The first figure shows a shift by +10% for each color and the second figure -10%.

Similar to the brightness gradients but the following saturation gradients show a change of the HunterLab color 31.8732, 6.9629, 2.1810 by changing the saturation by 10% instead.

■ 31.8732, 6.9629,
2.1810

■ 31.8732, 6.9629,
2.1810

■ 138.4942, 6.3048,
8.2707

■ 23.4624, 6.6587,
1.6797

■ 51.0833, 7.2750,
3.3043

■ 15.9574, 6.2307,
1.2217

■ 61.7614, 7.3117,
3.9201

■ 9.4857, 5.6444,
0.8140

■ 73.0946, 7.2808,
4.5695

0.0000, INF, NaN

0.0000, NaN, NaN

■ 85.0470, 7.1889,
5.2509

0.0000, NaN, NaN

■ 97.5880, 7.0414,
5.9630

0.0000, NaN, NaN

110.6912, 6.8425,

0.0000, NaN, NaN

124.3334, 6.5960,
7.4739

■ 31.8732, 6.9629,
2.1810

■ 31.8732, 6.9629,
2.1810

■ 29.1335, 10.9083,
2.4538

■ 34.7990, 3.0997,
2.0675

■ 26.6107, 14.8986,
2.9104

■ 37.8816, -0.6639,
2.0865

■ 24.3451, 18.8487,
3.5747

■ 41.1000, -4.3291,
2.2171

■ 22.3811, 22.6128,
4.4582

■ 44.4368, -7.9038,
2.4410

■ 20.7644, 25.9742,
5.5482

■ 47.8776, -11.3985,
2.7433

■ 19.5333, 28.6668,
6.7937

■ 51.4110, -14.8243,
3.1120

■ 18.6870, 30.5109,
8.0870

■ 55.0277, -18.1922,
3.5372

■ 18.2265, 31.6020,
8.7654

■ 58.7197, -21.5119,
4.0110

■ 62.4806, -24.7920,
4.5270

Harmonies

Analogous

The Analogous color harmony consists of three colors that are next to each other on the color wheel.



31.8739, 6.0090, -1.9997



31.8732, 6.9629, 2.1810



31.8739, 5.4936, 5.7495

Triad

The Triadic color harmony groups three colors that are evenly spaced from another and form a triangle on the color wheel.



31.8739, 6.9618, 2.1816



31.8739, -6.1061, 7.6244



31.8739, -5.3281, -6.1039

Complementary

The Complementary color scheme is a pair of colors which are on the opposite of each other on the color wheel.



31.8732, 6.9629, 2.1810



37.0888, -9.6331, 2.1712

Split Complementary

Split-complementary colors differ from the complementary color scheme. The scheme consists of three colors, the original color and two neighbors of the complement color.



31.8739, -8.3117, -2.8809



31.8732, 6.9629, 2.1810



31.8739, -8.7440, 5.0661

Square

The Square scheme is like the rectangle color scheme, but the four colors are evenly spaced on the color wheel.



31.8739, 6.9618, 2.1816



31.8739, -2.1739, 8.6194



31.8739, -9.5298, 1.2818



31.8739, -1.2281, -7.1394

Rectangle

The Rectangle color scheme consists of four colors that form a rectangle on the color wheel.



31.8732, 6.9629, 2.1810



31.8739, 3.3826, 7.4081



31.8739, -9.5298, 1.2818



31.8739, -6.4874, -5.2212

Sweetspot

The Sweet Spot groups the original color and five complimentary colors.



31.8739, 6.9618, 2.1816



49.2906, 0.7805, 2.7656



31.8916, 8.2190, -7.1024



23.7069, 0.4619, 1.3333



75.5302, -4.0301, 4.1037



25.2436, -1.3469, 1.3715

Same Dimension

The Same Dimension uses a secret algorithm to generate beautiful new colors.



31.8739, 6.9618, 2.1816



40.4365, 12.4488, 3.1084



33.4324, 2.9941, 6.1392



17.6838, 0.6044, 1.0045



19.7032, 34.1453, 9.6072



44.3472, 76.6004, 23.5832

Inverse Universe

The Inverse Universe completely reimagines the original color for something new.



31.8739, 6.9618, 2.1816



40.4365, 12.4488, 3.1084



35.2978, -5.7099, -2.6519



17.6838, 0.6044, 1.0045



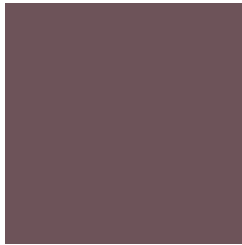
19.7032, 34.1453, 9.6072



44.3472, 76.6004, 23.5832

Previews

White Background



This preview shows how the HunterLab color 31.8732, 6.9629, 2.1810 looks on a white background.

Color Contrast Check

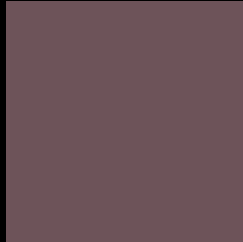
Large Text (above 18pt) WCAG AA ✓ Pass

Any Text WCAG AA ✓ Pass

Large Text (above 18pt) WCAG AAA ✓ Pass

Any Text WCAG AAA × Fail

Black Background



This preview shows how the HunterLab color 31.8732, 6.9629, 2.1810 looks on a black background.

Color Contrast Check

Large Text (above 18pt) WCAG AA ✓ Pass

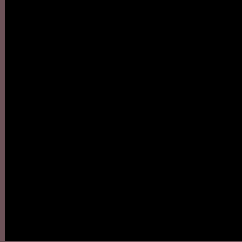
Any Text WCAG AA × Fail

Large Text (above 18pt) WCAG AAA × Fail

Any Text WCAG AAA × Fail

If you want to check with other color combinations, try the [Color Contrast Checker](#).

HunterLab 31.8732, 6.9629, 2.1810 Background



This preview shows how black text looks on a background with the HunterLab color 31.8732, 6.9629, 2.1810.



This preview shows how white text looks on a background with the HunterLab color 31.8732, 6.9629,

Color Blindness Simulation

Color vision deficiency is a very complex topic, and I could not describe the different causes any better than Wikipedia does, so if you want to learn more, you should check out their [article about color blindness](#).

Dichromacy



Original Color

31.8732, 6.9629, 2.1810

Protanopia

31.8735, -0.5459, 0.3670

Deuteranopia

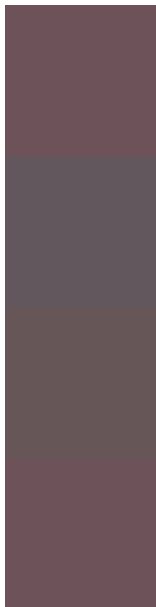
31.8961, 1.9089, 2.5258



Tritanopia

31.8732, 6.9629, 2.1810

Trichromacy



Original Color

31.8732, 6.9629, 2.1810

Protanomaly

31.9151, 2.1864, 0.8942

Deuteranomaly

32.0058, 3.5688, 2.6813

Tritanomaly

31.8732, 6.9629, 2.1810

Monochromacy



Original Color

31.8732, 6.9629, 2.1810

Achromatopsia

32.3445, -1.7258, 1.7573

Achromatomaly

32.1159, 1.4458, 1.9576

CSS Examples

Text

The CSS property to change the color of the text to HunterLab 31.8732, 6.9629, 2.1810 is called "color". The color property can be set on classes, ids or directly on the HTML element.

This example shows how text in the color `rgb(109, 83, 89)` looks like.

```
.text, #text, p{  
    color:rgb(109, 83, 89)  
}
```

If you want to add a text shadow in that color use the text-shadow property, you can generate a text shadow directly with our [CSS Text Shadow Generator](#).

Here you see how black text with a 4 pixel rgb(109, 83, 89) colored shadow looks like.

```
.shadow{ text-shadow: 4px 4px 2px rgb(109, 83, 89) }
```

Border

The CSS property to change the border of an element to HunterLab 31.8732, 6.9629, 2.1810 is called "border".

The border property can be set on classes, ids or directly on the HTML element.

This example shows the color as border, it can be applied via the CSS property "border" or "border-color".

```
.border, #border, table{ border:4px solid rgb(109, 83, 89) }
```


If only the border color should be changed use the property `border-color`.

```
.border{ border-color:rgb(109, 83, 89) }
```

If you want to add a box shadow in that color use:

Here you see how a box with a 4 pixel `rgb(109, 83, 89)` colored shadow looks like.

```
.boxshadow{ -moz-box-shadow:4px 4px 4px  
4px rgb(109, 83, 89); -webkit-box-  
shadow:4px 4px 4px 4px rgb(109, 83, 89);  
box-shadow:4px 4px 4px 4px rgb(109, 83,  
89) }
```

Background

The CSS property to change the background color of an element to HunterLab 31.8732, 6.9629, 2.1810 is called "background". The background property can be set on classes, ids or directly on the HTML element.

```
.background, #background, body{  
background: rgb(109, 83, 89) }
```

If only the background color should be changed can be used:

```
.background{ background-color: rgb(109, 83,  
89) }
```

This example shows the color as background, it is applied via the CSS property "background".

To optimize and compress your CSS code, you can use our [online CSS compressor and optimizer](#) based on csstidy. If you want to create a linear or radial gradient as background or border, check our [CSS Gradient Generator](#).

Hey! You found this booklet interesting? Support Converting Colors with the new Membership Option!

The pro membership hides all ads, plus gives you double the colors in the color bucket, and more awesome pro features!

[Learn more, Memberships starting at \\$2.50/m!](#)

**Follow me
on Twitter!**

@ConvertingColor