

Converting Colors

HunterLab(32.0763, 1.9449,
9.2070)

Have a look what the booklet for
HunterLab(32.0763, 1.9449, 9.2070)
contains.

HunterLab(32.1290, 1.8734, 9.1378)	3
<i>Conversions</i>	4
<i>Details</i>	6
<i>Harmonies</i>	12
<i>Previews</i>	24
<i>Color Blindness Simulation</i>	28
<i>CSS Examples</i>	31

Color

**HunterLab(32.1290, 1.8734,
9.1378)**

Conversions

Conversions Part 1

Format	Color
Hex	6A5746
RGB	106, 87, 70
RGB Percent	42%, 34%, 27%
CMY	0.5843, 0.6588, 0.7255
CMYK	0.00, 0.18, 0.34, 0.58
HSL	28°, 20%, 35%
HSV	28°, 34%, 42%
XYZ	10.4575, 10.3227, 7.2357
YIQ	90.7430, 16.7810, -1.2590

Conversions

Conversions Part 2

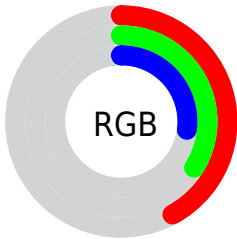
Format	Color
R_{YB}	106, 102, 70
Decimal	6969158
CIE _{Lab}	38.42, 5.04, 12.81
CIE _{LCh}	38, 13.766, 68.534
Yxy	10.3232, 0.3733, 0.3685
Android (android.graphics.Color)	4285159238 (0xFF6A5746)
YUV	90.7430, -10.2263, 13.3804
Hunter-Lab	32.1290, 1.8734, 9.1378

Details

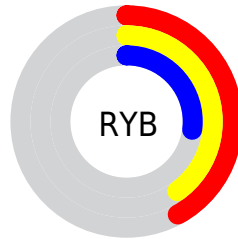
The HunterLab color **32.1290, 1.8734, 9.1378** is a dark color, and the websafe version is hex **666666**. A complement of this color would be **30.8012, -3.4862, -7.3290**, and the grayscale version is **32.2823, -1.7225, 1.7540**.

A 20% lighter version of the original color is **51.4475, 1.2726, 11.9717**, and **16.2315, 2.0650, 6.2503** is the 20% darker color. If you saturate the color by 10%, you get **30.5449, 3.3288, 10.7422**, and if you desaturate by 10%, it is **33.7792, 0.5631, 7.2981**.

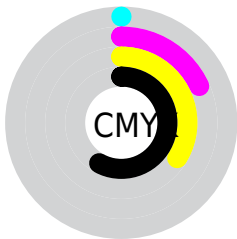
Distribution



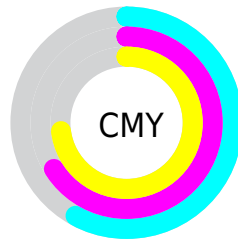
- Red (42%)
- Green (34%)
- Blue (27%)



- Red (42%)
- Yellow (40%)
- Blue (27%)



- Cyan (0%)
- Magenta (18%)
- Yellow (34%)
- Black (58%)



- Cyan (58%)
- Magenta (66%)
- Yellow (73%)

Brightness & Saturation Gradients

These gradients show how the HunterLab color 32.1290, 1.8734, 9.1378 changes by changing the brightness by 10 percent. The first figure shows a shift by +10% for each color and the second figure -10%.

Similar to the brightness gradients but the following saturation gradients show a change of the HunterLab color 32.1290, 1.8734, 9.1378 by changing the saturation by 10% instead.

■ 32.1290, 1.8734,
9.1378

■ 32.1290, 1.8734,
9.1378

138.9113, -1.6511,
20.7032

■ 23.6934, 1.9920,
7.7535

■ 51.3826, 1.4278,
11.7740

■ 16.1607, 2.0260,
6.2830

■ 62.0802, 1.1197,
13.0578

■ 9.6568, 1.9514,
6.0301

■ 73.4318, 0.7620,
14.3315

0.0000, NaN, NaN

0.0000, NaN, NaN

■ 85.4016, 0.3586,
15.6008

0.0000, NaN, NaN

■ 97.9592, -0.0869,
16.8700

0.0000, NaN, NaN

0.0000, NaN, NaN

111.0783, -0.5718,

18.1420

0.0000, NaN, NaN

124.7358, -1.0939,
19.4192

■ 32.1290, 1.8734,
9.1378

■ 32.1290, 1.8734,
9.1378

■ 30.5449, 3.3288,
10.7422

■ 33.7792, 0.5631,
7.2981

■ 29.0305, 4.9394,
12.0854

■ 35.4880, -0.6070,
5.2451

■ 27.5925, 6.7072,
13.1430

■ 37.2515, -1.6473,
3.0005

■ 26.2375, 8.6305,
13.8922

■ 39.0654, -2.5675,
0.5836

■ 24.9721, 10.7003,
14.3158

■ 40.9258, -3.3770,
-1.9886

■ 23.8007, 12.8887,
14.4336

■ 42.8294, -4.0849,
-4.7010

■ 23.1316, 14.2091,
14.5023

■ 44.7732, -4.6997,
-7.5405

■ 46.7543, -5.2292,
-10.4955

■ 48.7703, -5.6807,
-13.5559

Harmonies

Analogous

The Analogous color harmony consists of three colors that are next to each other on the color wheel.



32.1297, 6.1416, 6.9326



32.1290, 1.8734, 9.1378



32.1297, -3.1279, 9.5311

Triad

The Triadic color harmony groups three colors that are evenly spaced from another and form a triangle on the color wheel.



32.1297, 1.8722, 9.1382



32.1297, -10.6673, 0.3644



32.1297, 4.4843, -6.2441

Complementary

The Complementary color scheme is a pair of colors which are on the opposite of each other on the color wheel.



32.1290, 1.8734, 9.1378



30.8012, -3.4862, -7.3290

Split Complementary

Split-complementary colors differ from the complementary color scheme. The scheme consists of three colors, the original color and two neighbors of the complement color.



32.1297, -0.2794, -8.6535



32.1290, 1.8734, 9.1378



32.1297, -8.8844, -4.4746

Square

The Square scheme is like the rectangle color scheme, but the four colors are evenly spaced on the color wheel.



32.1297, 1.8722, 9.1382



32.1297, -10.1691, 4.9139



32.1297, -5.1535, -7.9608



32.1297, 7.7126, -1.7749

Rectangle

The Rectangle color scheme consists of four colors that form a rectangle on the color wheel.



32.1290, 1.8734, 9.1378



32.1297, -6.1733, 8.7805



32.1297, -5.1535, -7.9608



32.1297, 2.9982, -7.3506

Sweetspot

The Sweet Spot groups the original color and five complimentary colors.



32.1297, 1.8722, 9.1382



47.8665, -1.3313, 5.8809



28.5819, 12.0946, -1.8734



23.0533, -0.5754, 2.9898



74.4461, -3.9723, 4.0448



24.3420, -1.2988, 1.3225

Same Dimension

The Same Dimension uses a secret algorithm to generate beautiful new colors.



32.1297, 1.8722, 9.1382



40.8423, 4.0422, 13.8674



36.8359, -5.9224, 13.2678



18.2497, -0.5730, 2.0819



25.6382, 16.1346, 16.0806



56.3727, 39.9979, 35.4368

Inverse Universe

The Inverse Universe completely reimagines the original color for something new.



30.8012, -3.4862, -7.3290



38.6822, -4.6211, -12.9252



26.2198, 4.4483, -14.5995



18.0686, -1.3091, -0.1603



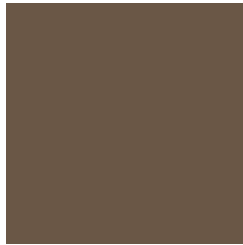
21.7391, 2.5664, -32.7122



47.2541, 9.1935, -78.9097

Previews

White Background



This preview shows how the HunterLab color 32.1290, 1.8734, 9.1378 looks on a white background.

Color Contrast Check

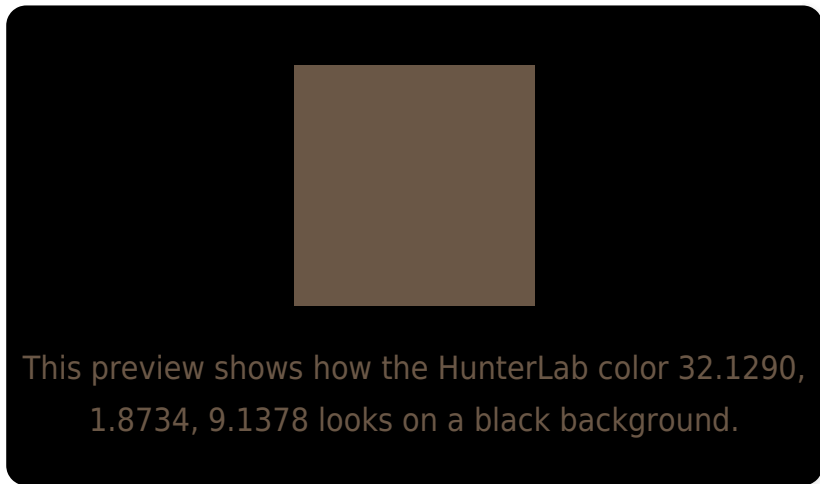
Large Text (above 18pt) WCAG AA ✓ Pass

Any Text WCAG AA ✓ Pass

Large Text (above 18pt) WCAG AAA ✓ Pass

Any Text WCAG AAA × Fail

Black Background



Color Contrast Check

Large Text (above 18pt) WCAG AA ✓ Pass

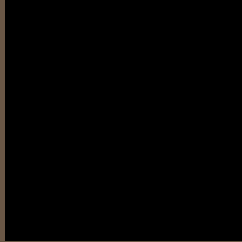
Any Text WCAG AA × Fail

Large Text (above 18pt) WCAG AAA × Fail

Any Text WCAG AAA × Fail

If you want to check with other color combinations, try the [Color Contrast Checker](#).

HunterLab 32.1290, 1.8734, 9.1378 Background



This preview shows how black text looks on a background with the HunterLab color 32.1290, 1.8734, 9.1378.

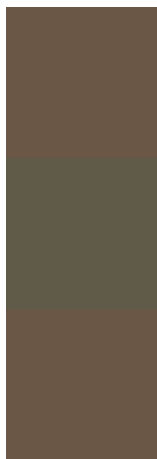


This preview shows how white text looks on a background with the HunterLab color 32.1290, 1.8734,

Color Blindness Simulation

Color vision deficiency is a very complex topic, and I could not describe the different causes any better than Wikipedia does, so if you want to learn more, you should check out their [article about color blindness](#).

Dichromacy



Original Color

32.1290, 1.8734, 9.1378

Protanopia

32.0422, -2.3172, 8.3592

Deuteranopia

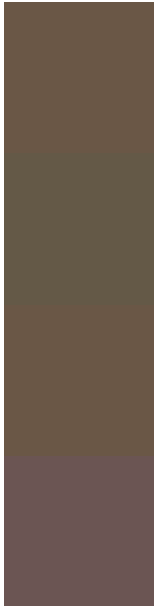
32.1290, 1.8734, 9.1378



Tritanopia

32.0689, 6.4596, 1.5749

Trichromacy



Original Color

32.1290, 1.8734, 9.1378

Protanomaly

32.1077, -0.7874, 8.7628

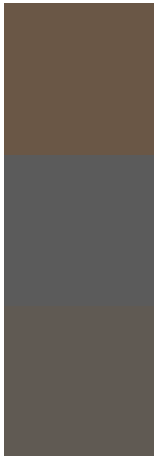
Deuteranomaly

32.1290, 1.8734, 9.1378

Tritanomaly

32.0115, 4.6105, 4.6487

Monochromacy



Original Color

32.1290, 1.8734, 9.1378

Achromatopsia

32.3445, -1.7258, 1.7573

Achromatomaly

32.2857, -0.9836, 4.8485

CSS Examples

Text

The CSS property to change the color of the text to HunterLab 32.1290, 1.8734, 9.1378 is called "color". The color property can be set on classes, ids or directly on the HTML element.

This example shows how text in the color `rgb(106, 87, 70)` looks like.

```
.text, #text, p{  
    color:rgb(106, 87, 70)  
}
```

If you want to add a text shadow in that color use the text-shadow property, you can generate a text shadow directly with our [CSS Text Shadow Generator](#).

Here you see how black text with a 4 pixel rgb(106, 87, 70) colored shadow looks like.

```
.shadow{ text-shadow: 4px 4px 2px rgb(106, 87, 70) }
```

Border

The CSS property to change the border of an element to HunterLab 32.1290, 1.8734, 9.1378 is called "border". The border property can be set on classes, ids or directly on the HTML element.

This example shows the color as border, it can be applied via the CSS property "border" or "border-color".

```
.border, #border, table{ border:4px solid rgb(106, 87, 70) }
```


If only the border color should be changed use the property border-color.

```
.border{ border-color:rgb(106, 87, 70) }
```

If you want to add a box shadow in that color use:

Here you see how a box with a 4 pixel rgb(106, 87, 70) colored shadow looks like.

```
.boxshadow{ -moz-box-shadow:4px 4px 4px  
4px rgb(106, 87, 70); -webkit-box-  
shadow:4px 4px 4px 4px rgb(106, 87, 70);  
box-shadow:4px 4px 4px 4px rgb(106, 87,  
70) }
```

Background

The CSS property to change the background color of an element to HunterLab 32.1290, 1.8734, 9.1378 is called "background". The background property can be set on classes, ids or directly on the HTML element.

```
.background, #background, body{  
background: rgb(106, 87, 70) }
```

If only the background color should be changed can be used:

```
.background{ background-color: rgb(106, 87,  
70) }
```

This example shows the color as background, it is applied via the CSS property "background".

To optimize and compress your CSS code, you can use our [online CSS compressor and optimizer](#) based on csstidy. If you want to create a linear or radial gradient as background or border, check our [CSS Gradient Generator](#).

Hey! You found this booklet interesting? Support Converting Colors with the new Membership Option!

The pro membership hides all ads, plus gives you double the colors in the color bucket, and more awesome pro features!

[Learn more, Memberships starting at \\$2.50/m!](#)

**Follow me
on Twitter!**

@ConvertingColor