

Converting Colors

HunterLab(32.8100, 1.7296,
8.5404)

Have a look what the booklet for
HunterLab(32.8100, 1.7296, 8.5404)
contains.

HunterLab(32.8100, 1.7296, 8.5404)	3
<i>Conversions</i>	4
<i>Details</i>	6
<i>Harmonies</i>	12
<i>Previews</i>	24
<i>Color Blindness Simulation</i>	28
<i>CSS Examples</i>	31

Color

**HunterLab(32.8100, 1.7296,
8.5404)**

Conversions

Conversions Part 1

Format	Color
Hex	6B594A
RGB	107, 89, 74
RGB Percent	42%, 35%, 29%
CMY	0.5804, 0.6510, 0.7098
CMYK	0.00, 0.17, 0.31, 0.58
HSL	27°, 18%, 35%
HSV	27°, 31%, 42%
XYZ	10.8718, 10.7650, 7.9834
YIQ	92.6720, 15.5430, -0.8490

Conversions

Conversions Part 2

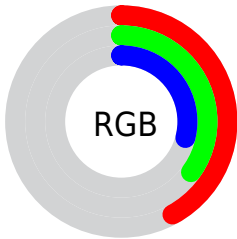
Format	Color
RYB	107, 102, 74
Decimal	7035210
CIELab	39.18, 4.86, 11.43
CIElCh	39, 12.422, 66.978
Yxy	10.7655, 0.3670, 0.3634
Android (android.graphics.Color)	4285225290 (0xFF6B594A)
YUV	92.6720, -9.2053, 12.5657
Hunter-Lab	32.8100, 1.7296, 8.5404

Details

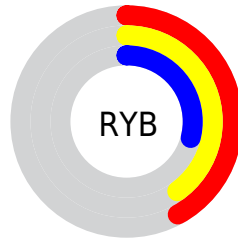
The HunterLab color **32.8100, 1.7296, 8.5404** is a dark color, and the websafe version is hex **666666**. A complement of this color would be **31.8926, -3.7332, -6.2726**, and the grayscale version is **32.9929, -1.7604, 1.7926**.

A 20% lighter version of the original color is **52.2171, 1.2793, 10.9212**, and **16.8075, 1.7963, 6.0552** is the 20% darker color. If you saturate the color by 10%, you get **31.1451, 3.2388, 10.2118**, and if you desaturate by 10%, it is **34.5431, 0.3648, 6.6471**.

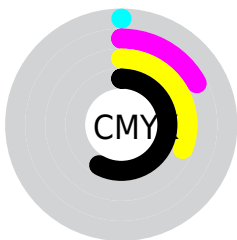
Distribution



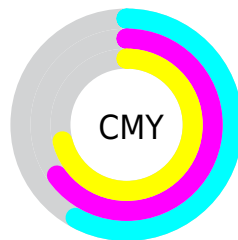
- Red (42%)
- Green (35%)
- Blue (29%)



- Red (42%)
- Yellow (40%)
- Blue (29%)



- Cyan (0%)
- Magenta (17%)
- Yellow (31%)
- Black (58%)



- Cyan (58%)
- Magenta (65%)
- Yellow (71%)

Brightness & Saturation Gradients

These gradients show how the HunterLab color 32.8100, 1.7296, 8.5404 changes by changing the brightness by 10 percent. The first figure shows a shift by +10% for each color and the second figure -10%.

Similar to the brightness gradients but the following saturation gradients show a change of the HunterLab color 32.8100, 1.7296, 8.5404 by changing the saturation by 10% instead.

■ 32.8100, 1.7296,
8.5404

■ 32.8100, 1.7296,
8.5404

■ 140.0183, -1.9031,
19.4497

■ 24.3092, 1.8655,
7.2681

■ 52.1782, 1.2542,
10.9898

■ 16.7034, 1.9194,
5.9292

■ 62.9273, 0.9330,
12.1928

■ 10.1150, 1.8685,
5.2775

■ 74.3275, 0.5628,
13.3917

0.0000, INF, NaN

0.0000, NaN, NaN

■ 86.3433, 0.1479,
14.5911

0.0000, NaN, NaN

■ 98.9449, -0.3087,
15.7945

0.0000, NaN, NaN

112.1060, -0.8042,

0.0000, NaN, NaN

17.0043

0.0000, NaN, NaN

125.8039, -1.3363,
18.2222

■ 32.8100, 1.7296,
8.5404

■ 32.8100, 1.7296,
8.5404

■ 31.1451, 3.2388,
10.2118

■ 34.5431, 0.3648,
6.6471

■ 29.5525, 4.9032,
11.6347

■ 36.3366, -0.8611,
4.5537

■ 28.0394, 6.7259,
12.7833

■ 38.1863, -1.9592,
2.2818

■ 26.6133, 8.7061,
13.6324

■ 40.0876, -2.9393,
-0.1502

■ 25.2814, 10.8357,
14.1605

■ 42.0365, -3.8113,
-2.7258

■ 24.0512, 13.0961,
14.3557

■ 44.0296, -4.5843,
-5.4308

■ 23.0060, 15.1910,
14.4422

■ 46.0635, -5.2669,
-8.2528

■ 48.1356, -5.8669,
-11.1811

■ 50.2433, -6.3917,
-14.2064

Harmonies

Analogous

The Analogous color harmony consists of three colors that are next to each other on the color wheel.



32.8108, 5.5095, 6.3947



32.8100, 1.7296, 8.5404



32.8108, -2.8053, 8.9998

Triad

The Triadic color harmony groups three colors that are evenly spaced from another and form a triangle on the color wheel.



32.8108, 1.7284, 8.5409



32.8108, -9.9682, 0.7620



32.8108, 3.6601, -5.5570

Complementary

The Complementary color scheme is a pair of colors which are on the opposite of each other on the color wheel.



32.8100, 1.7296, 8.5404



31.8926, -3.7332, -6.2726

Split Complementary

Split-complementary colors differ from the complementary color scheme. The scheme consists of three colors, the original color and two neighbors of the complement color.



32.8108, -0.6861, -7.5623



32.8100, 1.7296, 8.5404



32.8108, -8.4330, -3.6066

Square

The Square scheme is like the rectangle color scheme, but the four colors are evenly spaced on the color wheel.



32.8108, 1.7284, 8.5409



32.8108, -9.3996, 4.8677



32.8108, -5.0940, -6.8039



32.8108, 6.6663, -1.6271

Rectangle

The Rectangle color scheme consists of four colors that form a rectangle on the color wheel.



32.8100, 1.7296, 8.5404



32.8108, -5.6159, 8.3527



32.8108, -5.0940, -6.8039



32.8108, 2.2985, -6.5012

Sweetspot

The Sweet Spot groups the original color and five complimentary colors.



32.8108, 1.7284, 8.5409



49.0116, -1.3964, 5.6266



29.6628, 10.9780, -1.8370



23.9749, -0.6005, 2.9343



75.5302, -4.0301, 4.1037



25.2436, -1.3469, 1.3715

Same Dimension

The Same Dimension uses a secret algorithm to generate beautiful new colors.



32.8108, 1.7284, 8.5409



42.2904, 3.7487, 13.0719



37.1414, -5.4671, 12.4485



18.2272, -0.5350, 2.0574



25.2563, 17.0384, 15.8611



55.5058, 42.1211, 34.9398

Inverse Universe

The Inverse Universe completely reimagines the original color for something new.



31.8926, -3.7332, -6.2726



40.7875, -5.1550, -11.1638



27.6375, 3.5513, -12.7483



18.0915, -1.3467, -0.1326



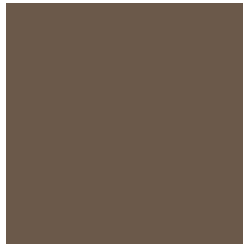
22.2603, 1.6230, -31.3271



48.4719, 6.9002, -75.4814

Previews

White Background



This preview shows how the HunterLab color 32.8100, 1.7296, 8.5404 looks on a white background.

Color Contrast Check

Large Text (above 18pt) WCAG AA ✓ Pass

Any Text WCAG AA ✓ Pass

Large Text (above 18pt) WCAG AAA ✓ Pass

Any Text WCAG AAA × Fail

Black Background



This preview shows how the HunterLab color 32.8100, 1.7296, 8.5404 looks on a black background.

Color Contrast Check

Large Text (above 18pt) WCAG AA ✓ Pass

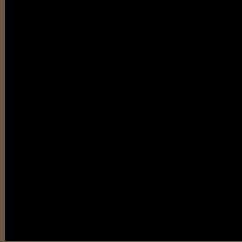
Any Text WCAG AA × Fail

Large Text (above 18pt) WCAG AAA × Fail

Any Text WCAG AAA × Fail

If you want to check with other color combinations, try the [Color Contrast Checker](#).

HunterLab 32.8100, 1.7296, 8.5404 Background



This preview shows how black text looks on a background with the HunterLab color 32.8100, 1.7296, 8.5404.



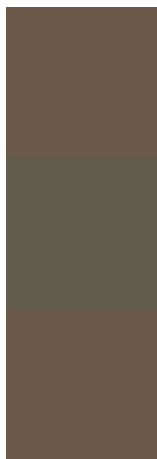
This preview shows how white text looks on a background with the HunterLab color 32.8100, 1.7296,

8.5404.

Color Blindness Simulation

Color vision deficiency is a very complex topic, and I could not describe the different causes any better than Wikipedia does, so if you want to learn more, you should check out their [article about color blindness](#).

Dichromacy



Original Color

32.8100, 1.7296, 8.5404

Protanopia

32.8219, -2.1366, 7.8360

Deuteranopia

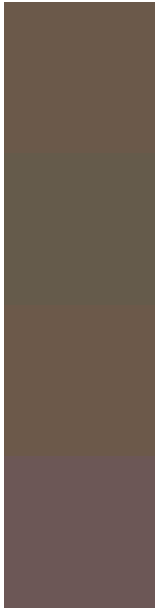
32.9049, 2.0491, 8.6382



Tritanopia

32.7064, 6.1284, 1.4877

Trichromacy



Original Color

32.8100, 1.7296, 8.5404

Protanomaly

32.7977, -0.9145, 8.1603

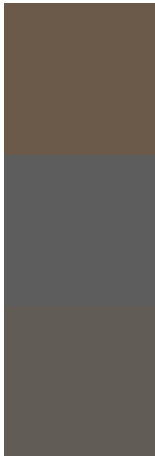
Deuteranomaly

32.9049, 2.0491, 8.6382

Tritanomaly

32.6748, 4.3986, 4.2356

Monochromacy



Original Color

32.8100, 1.7296, 8.5404

Achromatopsia

33.0850, -1.7653, 1.7976

Achromatomaly

33.0497, -0.8901, 4.5553

CSS Examples

Text

The CSS property to change the color of the text to HunterLab 32.8100, 1.7296, 8.5404 is called "color". The color property can be set on classes, ids or directly on the HTML element.

This example shows how text in the color `rgb(107, 89, 74)` looks like.

```
.text, #text, p{  
    color:rgb(107, 89, 74)  
}
```

If you want to add a text shadow in that color use the text-shadow property, you can generate a text shadow directly with our [CSS Text Shadow Generator](#).

Here you see how black text with a 4 pixel rgb(107, 89, 74) colored shadow looks like.

```
.shadow{ text-shadow: 4px 4px 2px rgb(107, 89, 74) }
```

Border

The CSS property to change the border of an element to HunterLab 32.8100, 1.7296, 8.5404 is called "border".

The border property can be set on classes, ids or directly on the HTML element.

This example shows the color as border, it can be applied via the CSS property "border" or "border-color".

```
.border, #border, table{ border:4px solid rgb(107, 89, 74) }
```


If only the border color should be changed use the property `border-color`.

```
.border{ border-color:rgb(107, 89, 74) }
```

If you want to add a box shadow in that color use:

Here you see how a box with a 4 pixel `rgb(107, 89, 74)` colored shadow looks like.

```
.boxshadow{ -moz-box-shadow:4px 4px 4px  
4px rgb(107, 89, 74); -webkit-box-  
shadow:4px 4px 4px 4px rgb(107, 89, 74);  
box-shadow:4px 4px 4px 4px rgb(107, 89,  
74) }
```

Background

The CSS property to change the background color of an element to HunterLab 32.8100, 1.7296, 8.5404 is called "background". The background property can be set on classes, ids or directly on the HTML element.

```
.background, #background, body{  
background: rgb(107, 89, 74) }
```

If only the background color should be changed can be used:

```
.background{ background-color: rgb(107, 89,  
74) }
```

This example shows the color as background, it is applied via the CSS property "background".

To optimize and compress your CSS code, you can use our [online CSS compressor and optimizer](#) based on csstidy. If you want to create a linear or radial gradient as background or border, check our [CSS Gradient Generator](#).

Hey! You found this booklet interesting? Support Converting Colors with the new Membership Option!

The pro membership hides all ads, plus gives you double the colors in the color bucket, and more awesome pro features!

[Learn more, Memberships starting at \\$2.50/m!](#)

**Follow me
on Twitter!**

@ConvertingColor