

Converting Colors

HunterLab(33.0142, 2.9711,
10.7858)

Have a look what the booklet for
HunterLab(33.0142, 2.9711,
10.7858) contains.

HunterLab(32.9081, 3.0801, 10.7645)	3
<i>Conversions</i>	4
<i>Details</i>	6
<i>Harmonies</i>	12
<i>Previews</i>	24
<i>Color Blindness Simulation</i>	28
<i>CSS Examples</i>	31

Color

**HunterLab(32.9081, 3.0801,
10.7645)**

Conversions

Conversions Part 1

Format	Color
Hex	705843
RGB	112, 88, 67
RGB Percent	44%, 35%, 26%
CMY	0.5608, 0.6549, 0.7373
CMYK	0.00, 0.21, 0.40, 0.56
HSL	28°, 25%, 35%
HSV	28°, 40%, 44%
XYZ	11.1849, 10.8294, 6.8109
YIQ	92.7820, 21.0450, -1.4430

Conversions

Conversions Part 2

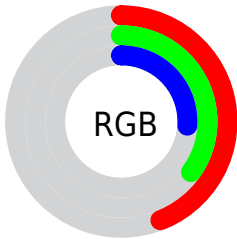
Format	Color
RYB	112, 106, 67
Decimal	7362627
CIELab	39.29, 6.69, 15.94
CIElCh	39, 17.287, 67.224
Yxy	10.8299, 0.3880, 0.3757
Android (android.graphics.Color)	4285552707 (0xFF705843)
YUV	92.7820, -12.7105, 16.8542
Hunter-Lab	32.9081, 3.0801, 10.7645

Details

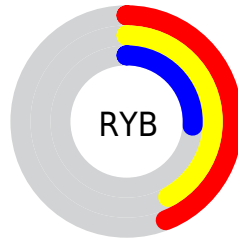
The HunterLab color **32.9081, 3.0801, 10.7645** is a dark color, and the websafe version is hex **666666**. A complement of this color would be **31.3767, -3.8207, -9.6992**, and the grayscale version is **33.0449, -1.7632, 1.7954**.

A 20% lighter version of the original color is **52.3585, 2.8074, 13.9453**, and **16.8833, 3.0034, 7.4213** is the 20% darker color. If you saturate the color by 10%, you get **31.2530, 4.7671, 12.2920**, and if you desaturate by 10%, it is **34.6392, 1.5536, 8.9700**.

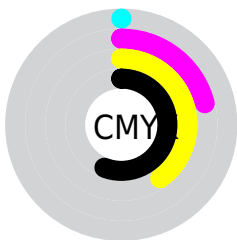
Distribution



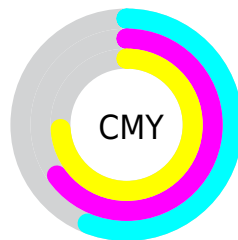
- Red (44%)
- Green (35%)
- Blue (26%)



- Red (44%)
- Yellow (42%)
- Blue (26%)



- Cyan (0%)
- Magenta (21%)
- Yellow (40%)
- Black (56%)



- Cyan (56%)
- Magenta (65%)
- Yellow (74%)

Brightness & Saturation Gradients

These gradients show how the HunterLab color 32.9081, 3.0801, 10.7645 changes by changing the brightness by 10 percent. The first figure shows a shift by +10% for each color and the second figure -10%.

Similar to the brightness gradients but the following saturation gradients show a change of the HunterLab color 32.9081, 3.0801, 10.7645 by changing the saturation by 10% instead.

■ 32.9081, 3.0801,
10.7645

■ 32.9081, 3.0801,
10.7645

■ 140.1774, 0.2187,
23.8279

■ 24.3979, 3.1012,
9.1378

■ 52.2927, 2.8092,
13.8168

■ 16.7818, 3.0289,
7.3915

■ 63.0492, 2.5808,
15.2840

■ 10.1813, 2.8364,
7.0931

■ 74.4563, 2.2987,
16.7287

0.0000, INF, NaN

0.0000, NaN, NaN

■ 86.4788, 1.9675,
18.1587

0.0000, NaN, NaN

■ 99.0866, 1.5910,
19.5799

0.0000, NaN, NaN

■ 112.2538, 1.1723,

0.0000, NaN, NaN

125.9575, 0.7142,
22.4116

■ 32.9081, 3.0801,
10.7645

■ 32.9081, 3.0801,
10.7645

■ 31.2530, 4.7671,
12.2920

■ 34.6392, 1.5536,
8.9700

■ 29.6782, 6.6235,
13.5240

■ 36.4379, 0.1837,
6.9336

■ 28.1918, 8.6478,
14.4348

■ 38.2993, -1.0406,
4.6803

■ 26.8010, 10.8330,
15.0025

■ 40.2182, -2.1296,
2.2322

■ 25.5130, 13.1612,
15.2156

■ 42.1904, -3.0937,
-0.3907

■ 24.3417, 15.4971,
15.2705

■ 44.2115, -3.9431,
-3.1711

■ 46.2782, -4.6874,
-6.0935

■ 48.3871, -5.3356,
-9.1447

■ 50.5355, -5.8960,
-12.3129

Harmonies

Analogous

The Analogous color harmony consists of three colors that are next to each other on the color wheel.



32.9089, 8.4857, 8.0437



32.9081, 3.0801, 10.7645



32.9089, -3.2716, 11.3178

Triad

The Triadic color harmony groups three colors that are evenly spaced from another and form a triangle on the color wheel.



32.9089, 3.0788, 10.7649



32.9089, -12.9638, 0.3046



32.9089, 5.9189, -8.8040

Complementary

The Complementary color scheme is a pair of colors which are on the opposite of each other on the color wheel.



32.9081, 3.0801, 10.7645



31.3767, -3.8207, -9.6992

Split Complementary

Split-complementary colors differ from the complementary color scheme. The scheme consists of three colors, the original color and two neighbors of the complement color.



32.9089, -0.2159, -11.8602



32.9081, 3.0801, 10.7645



32.9089, -10.8837, -5.9949

Square

The Square scheme is like the rectangle color scheme, but the four colors are evenly spaced on the color wheel.



32.9089, 3.0788, 10.7649



32.9089, -12.2270, 5.9586



32.9089, -6.3301, -10.7455



32.9089, 10.2099, -3.0041

Rectangle

The Rectangle color scheme consists of four colors that form a rectangle on the color wheel.



32.9081, 3.0801, 10.7645



32.9089, -7.1332, 10.5001



32.9089, -6.3301, -10.7455



32.9089, 3.9866, -10.2316

Sweetspot

The Sweet Spot groups the original color and five complimentary colors.



32.9089, 3.0788, 10.7649



50.2292, -1.0481, 6.8641



28.6609, 15.7209, -2.5390



24.5067, -0.4420, 3.5031



76.6170, -4.0881, 4.1627



26.1505, -1.3953, 1.4208

Same Dimension

The Same Dimension uses a secret algorithm to generate beautiful new colors.



32.9089, 3.0788, 10.7649



41.6212, 6.1033, 16.1217



38.8717, -6.8354, 15.7332



19.0638, -0.5817, 2.1785



26.0856, 16.8669, 16.3691



56.7458, 41.1866, 35.6875

Inverse Universe

The Inverse Universe completely reimagines the original color for something new.



31.3767, -3.8207, -9.6992



39.1631, -4.8771, -16.7229



25.6091, 6.3241, -19.5993



18.8878, -1.3837, -0.1704



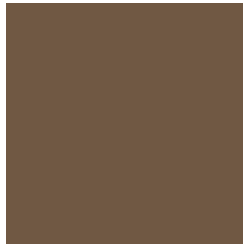
22.3818, 2.3795, -33.1119



48.1809, 8.6033, -78.7941

Previews

White Background



This preview shows how the HunterLab color 32.9081, 3.0801, 10.7645 looks on a white background.

Color Contrast Check

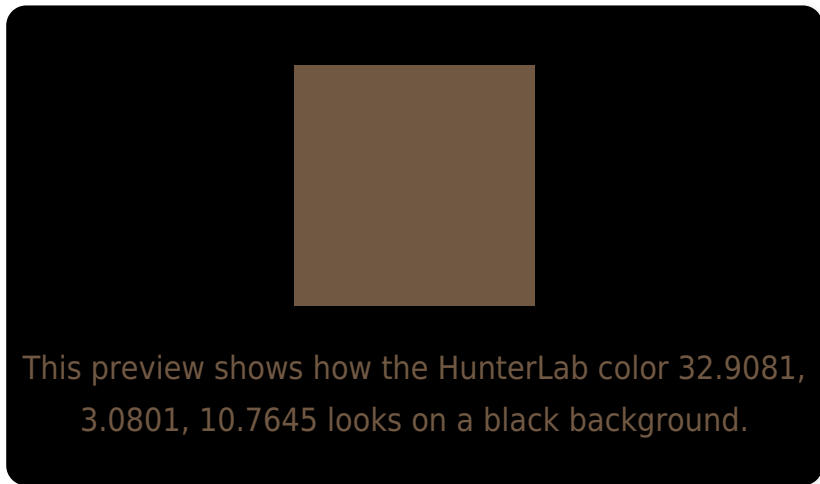
Large Text (above 18pt) WCAG AA ✓ Pass

Any Text WCAG AA ✓ Pass

Large Text (above 18pt) WCAG AAA ✓ Pass

Any Text WCAG AAA × Fail

Black Background



Color Contrast Check

Large Text (above 18pt) WCAG AA ✓ Pass

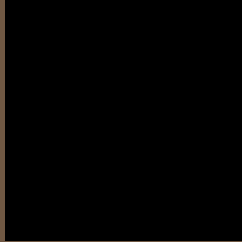
Any Text WCAG AA × Fail

Large Text (above 18pt) WCAG AAA × Fail

Any Text WCAG AAA × Fail

If you want to check with other color combinations, try the [Color Contrast Checker](#).

HunterLab 32.9081, 3.0801, 10.7645 Background



This preview shows how black text looks on a background with the HunterLab color 32.9081, 3.0801, 10.7645.



This preview shows how white text looks on a background with the HunterLab color 32.9081, 3.0801,

Color Blindness Simulation

Color vision deficiency is a very complex topic, and I could not describe the different causes any better than Wikipedia does, so if you want to learn more, you should check out their [article about color blindness](#).

Dichromacy



Original Color

32.9081, 3.0801, 10.7645

Protanopia

33.0318, -3.0422, 10.1949

Deuteranopia

32.9621, 1.9709, 10.7940



Tritanopia

32.9086, 7.9131, 2.5847

Trichromacy



Original Color

32.9081, 3.0801, 10.7645

Protanomaly

32.9281, -0.7404, 10.4300

Deuteranomaly

33.0598, 2.2992, 10.8882

Tritanomaly

32.8260, 5.9632, 5.9135

Monochromacy



Original Color

32.9081, 3.0801, 10.7645

Achromatopsia

33.0850, -1.7653, 1.7976

Achromatomaly

32.9114, -0.1213, 5.1676

CSS Examples

Text

The CSS property to change the color of the text to HunterLab 32.9081, 3.0801, 10.7645 is called "color". The color property can be set on classes, ids or directly on the HTML element.

This example shows how text in the color `rgb(112, 88, 67)` looks like.

```
.text, #text, p{  
    color:rgb(112, 88, 67)  
}
```

If you want to add a text shadow in that color use the text-shadow property, you can generate a text shadow directly with our [CSS Text Shadow Generator](#).

Here you see how black text with a 4 pixel rgb(112, 88, 67) colored shadow looks like.

```
.shadow{ text-shadow: 4px 4px 2px rgb(112, 88, 67) }
```

Border

The CSS property to change the border of an element to HunterLab 32.9081, 3.0801, 10.7645 is called "border". The border property can be set on classes, ids or directly on the HTML element.

This example shows the color as border, it can be applied via the CSS property "border" or "border-color".

```
.border, #border, table{ border:4px solid rgb(112, 88, 67) }
```


If only the border color should be changed use the property `border-color`.

```
.border{ border-color:rgb(112, 88, 67) }
```

If you want to add a box shadow in that color use:

Here you see how a box with a 4 pixel `rgb(112, 88, 67)` colored shadow looks like.

```
.boxshadow{ -moz-box-shadow:4px 4px 4px  
4px rgb(112, 88, 67); -webkit-box-  
shadow:4px 4px 4px 4px rgb(112, 88, 67);  
box-shadow:4px 4px 4px 4px rgb(112, 88,  
67) }
```

Background

The CSS property to change the background color of an element to HunterLab 32.9081, 3.0801, 10.7645 is called "background". The background property can be set on classes, ids or directly on the HTML element.

```
.background, #background, body{  
background: rgb(112, 88, 67) }
```

If only the background color should be changed can be used:

```
.background{ background-color: rgb(112, 88,  
67) }
```

This example shows the color as background, it is applied via the CSS property "background".

To optimize and compress your CSS code, you can use our [online CSS compressor and optimizer](#) based on csstidy. If you want to create a linear or radial gradient as background or border, check our [CSS Gradient Generator](#).

Hey! You found this booklet interesting? Support Converting Colors with the new Membership Option!

The pro membership hides all ads, plus gives you double the colors in the color bucket, and more awesome pro features!

[Learn more, Memberships starting at \\$2.50/m!](#)

**Follow me
on Twitter!**

@ConvertingColor