

Converting Colors

HunterLab(33.1956, 9.7612,
3.9747)

Have a look what the booklet for
HunterLab(33.1956, 9.7612, 3.9747)
contains.

HunterLab(33.1167, 9.6341, 4.0457)	3
<i>Conversions</i>	4
<i>Details</i>	6
<i>Harmonies</i>	12
<i>Previews</i>	24
<i>Color Blindness Simulation</i>	28
<i>CSS Examples</i>	31

Color

**HunterLab(33.1167, 9.6341,
4.0457)**

Conversions

Conversions Part 1

Format	Color
Hex	775458
RGB	119, 84, 88
RGB Percent	47%, 33%, 35%
CMY	0.5333, 0.6706, 0.6549
CMYK	0.00, 0.29, 0.26, 0.53
HSL	353°, 17%, 40%
HSV	353°, 29%, 47%
XYZ	12.5395, 10.9672, 10.6885
YIQ	94.9210, 19.5760, 8.6640

Conversions

Conversions Part 2

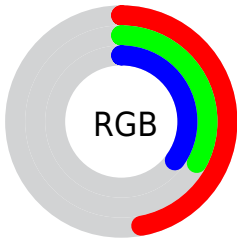
Format	Color
R_{YB}	119, 84, 88
Decimal	7820376
CIE Lab	39.53, 15.20, 3.47
CIE LCh	40, 15.595, 12.869
Yxy	10.9677, 0.3667, 0.3207
Android (android.graphics.Color)	4286010456 (0xFF775458)
YUV	94.9210, -3.4121, 21.1173
Hunter-Lab	33.1167, 9.6341, 4.0457

Details

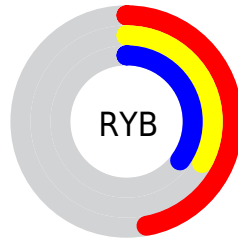
The HunterLab color $[33.1167, 9.6341, 4.0457]$ is a dark color, and the websafe version is hex 996666 . A complement of this color would be $[40.3937, -11.7043, 0.8771]$, and the grayscale version is $[33.8067, -1.8038, 1.8368]$.

A 20% lighter version of the original color is $[52.5888, 10.2243, 5.4753]$, and $[16.8103, 8.6324, 2.4486]$ is the 20% darker color. If you saturate the color by 10%, you get $[30.1867, 13.9195, 4.8864]$, and if you desaturate by 10%, it is $[36.2796, 5.4516, 3.3468]$.

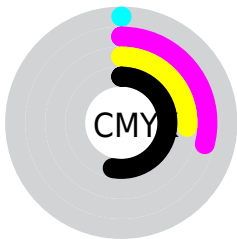
Distribution



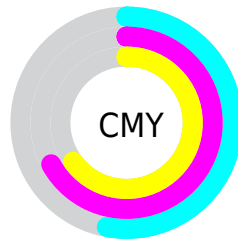
- Red (47%)
- Green (33%)
- Blue (35%)



- Red (47%)
- Yellow (33%)
- Blue (35%)



- Cyan (0%)
- Magenta (29%)
- Yellow (26%)
- Black (53%)



- Cyan (53%)
- Magenta (67%)
- Yellow (65%)

Brightness & Saturation Gradients

These gradients show how the HunterLab color 33.1167, 9.6341, 4.0457 changes by changing the brightness by 10 percent. The first figure shows a shift by +10% for each color and the second figure -10%.

Similar to the brightness gradients but the following saturation gradients show a change of the HunterLab color 33.1167, 9.6341, 4.0457 by changing the saturation by 10% instead.

33.1167, 9.6341,
4.0457

33.1167, 9.6341,
4.0457

140.5153, 10.2522,
11.3640

24.5868, 9.1524,
3.3535

52.5361, 10.2736,
5.5019

16.9485, 8.5376,
2.6803

63.3082, 10.4626,
6.2666

10.3225, 7.7576,
2.0252

74.7300, 10.5773,
7.0560

0.0000, INF, NaN

0.0000, NaN, NaN

86.7665, 10.6251,
7.8701

0.0000, NaN, NaN

99.3877, 10.6120,
8.7083

0.0000, NaN, NaN

112.5676, 10.5429,

0.0000, NaN, NaN

126.2836, 10.4218,
10.4557

■ 33.1167, 9.6341,
4.0457

■ 33.1167, 9.6341,
4.0457

■ 30.1867, 13.9195,
4.8864

■ 36.2796, 5.4516,
3.3468

■ 27.5305, 18.2473,
5.8748

■ 39.6377, 1.4001,
2.7732

■ 25.1991, 22.4889,
7.0037

■ 43.1631, -2.5198,
2.3089

■ 23.2470, 26.4338,
8.2378

■ 46.8328, -6.3175,
1.9380

■ 21.7239, 29.7934,
9.5046

■ 50.6286, -10.0070,
1.6465

■ 20.6613, 32.2621,
10.6964

■ 54.5357, -13.6032,
1.4224

■ 19.9236, 34.0850,
11.6142

■ 58.5420, -17.1206,
1.2554

■ 19.8810, 34.2009,
11.6531

■ 62.6377, -20.5723,
1.1373

■ 66.8146, -23.9696,
1.0611

Harmonies

Analogous

The Analogous color harmony consists of three colors that are next to each other on the color wheel.



33.1175, 9.3940, -1.4248



33.1167, 9.6341, 4.0457



33.1175, 6.6712, 8.1520

Triad

The Triadic color harmony groups three colors that are evenly spaced from another and form a triangle on the color wheel.



33.1175, 9.6328, 4.0463



33.1175, -8.9145, 8.5822



33.1175, -4.9422, -9.8165

Complementary

The Complementary color scheme is a pair of colors which are on the opposite of each other on the color wheel.



33.1167, 9.6341, 4.0457



40.3937, -11.7043, 0.8771

Split Complementary

Split-complementary colors differ from the complementary color scheme. The scheme consists of three colors, the original color and two neighbors of the complement color.



33.1175, -9.4401, -6.1221



33.1167, 9.6341, 4.0457



33.1175, -11.6246, 4.7348

Square

The Square scheme is like the rectangle color scheme, but the four colors are evenly spaced on the color wheel.



33.1175, 9.6328, 4.0463



33.1175, -4.1797, 10.4562



33.1175, -11.8102, -0.6098



33.1175, 0.7131, -10.0858

Rectangle

The Rectangle color scheme consists of four colors that form a rectangle on the color wheel.



33.1167, 9.6341, 4.0457



33.1175, 3.3899, 9.8181



33.1175, -11.8102, -0.6098



33.1175, -6.6300, -8.9087

Sweetspot

The Sweet Spot groups the original color and five complimentary colors.



33.1175, 9.6328, 4.0463



53.1256, 1.7773, 3.6986



33.6337, 13.1046, -9.8117



25.5903, 1.1811, 1.8418



78.7982, -4.2045, 4.2813



27.9800, -1.4929, 1.5202

Same Dimension

The Same Dimension uses a secret algorithm to generate beautiful new colors.



33.1175, 9.6328, 4.0463



41.7370, 16.5953, 6.1207



36.3167, 2.9056, 8.7347



19.2537, 0.6030, 1.3329



20.4902, 35.2446, 12.0428



45.1575, 77.5251, 27.6953

Inverse Universe

The Inverse Universe completely reimagines the original color for something new.



33.1175, 9.6328, 4.0463



41.7370, 16.5953, 6.1207



36.6600, -5.2511, -5.7286



19.2537, 0.6030, 1.3329



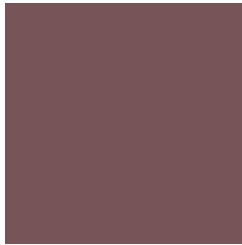
20.4902, 35.2446, 12.0428



45.1575, 77.5251, 27.6953

Previews

White Background



This preview shows how the HunterLab color 33.1167, 9.6341, 4.0457 looks on a white background.

Color Contrast Check

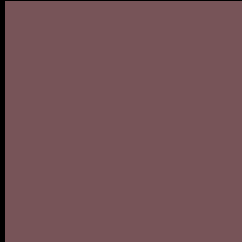
Large Text (above 18pt) WCAG AA ✓ Pass

Any Text WCAG AA ✓ Pass

Large Text (above 18pt) WCAG AAA ✓ Pass

Any Text WCAG AAA × Fail

Black Background



This preview shows how the HunterLab color 33.1167, 9.6341, 4.0457 looks on a black background.

Color Contrast Check

Large Text (above 18pt) WCAG AA ✓ Pass

Any Text WCAG AA × Fail

Large Text (above 18pt) WCAG AAA × Fail

Any Text WCAG AAA × Fail

If you want to check with other color combinations, try the [Color Contrast Checker](#).

HunterLab 33.1167, 9.6341, 4.0457 Background



This preview shows how black text looks on a background with the HunterLab color 33.1167, 9.6341, 4.0457.



This preview shows how white text looks on a background with the HunterLab color 33.1167, 9.6341,

Color Blindness Simulation

Color vision deficiency is a very complex topic, and I could not describe the different causes any better than Wikipedia does, so if you want to learn more, you should check out their [article about color blindness](#).

Dichromacy



Original Color

33.1167, 9.6341, 4.0457

Protanopia

33.2444, -1.2122, 1.9945

Deuteranopia

33.1718, 2.2289, 4.3630



Tritanopia

33.1674, 9.8942, 3.3196

Trichromacy



Original Color

33.1167, 9.6341, 4.0457

Protanomaly

33.1824, 2.4669, 2.8052

Deuteranomaly

33.1400, 4.7033, 4.3712

Tritanomaly

33.1419, 9.7634, 3.6849

Monochromacy



Original Color

33.1167, 9.6341, 4.0457

Achromatopsia

33.8283, -1.8050, 1.8380

Achromatomaly

33.4633, 2.1518, 2.7178

CSS Examples

Text

The CSS property to change the color of the text to HunterLab 33.1167, 9.6341, 4.0457 is called "color". The color property can be set on classes, ids or directly on the HTML element.

This example shows how text in the color `rgb(119, 84, 88)` looks like.

```
.text, #text, p{  
    color:rgb(119, 84, 88)  
}
```

If you want to add a text shadow in that color use the text-shadow property, you can generate a text shadow directly with our [CSS Text Shadow Generator](#).

Here you see how black text with a 4 pixel rgb(119, 84, 88) colored shadow looks like.

```
.shadow{ text-shadow: 4px 4px 2px rgb(119, 84, 88) }
```

Border

The CSS property to change the border of an element to HunterLab 33.1167, 9.6341, 4.0457 is called "border".

The border property can be set on classes, ids or directly on the HTML element.

This example shows the color as border, it can be applied via the CSS property "border" or "border-color".

```
.border, #border, table{ border:4px solid rgb(119, 84, 88) }
```


If only the border color should be changed use the property border-color.

```
.border{ border-color:rgb(119, 84, 88) }
```

If you want to add a box shadow in that color use:

Here you see how a box with a 4 pixel rgb(119, 84, 88) colored shadow looks like.

```
.boxshadow{ -moz-box-shadow:4px 4px 4px  
4px rgb(119, 84, 88); -webkit-box-  
shadow:4px 4px 4px 4px rgb(119, 84, 88);  
box-shadow:4px 4px 4px 4px rgb(119, 84,  
88) }
```

Background

The CSS property to change the background color of an element to HunterLab 33.1167, 9.6341, 4.0457 is called "background". The background property can be set on classes, ids or directly on the HTML element.

```
.background, #background, body{  
background: rgb(119, 84, 88) }
```

If only the background color should be changed can be used:

```
.background{ background-color: rgb(119, 84,  
88) }
```

This example shows the color as background, it is applied via the CSS property "background".

To optimize and compress your CSS code, you can use our [online CSS compressor and optimizer](#) based on csstidy. If you want to create a linear or radial gradient as background or border, check our [CSS Gradient Generator](#).

Hey! You found this booklet interesting? Support Converting Colors with the new Membership Option!

The pro membership hides all ads, plus gives you double the colors in the color bucket, and more awesome pro features!

[Learn more, Memberships starting at \\$2.50/m!](#)

**Follow me
on Twitter!**

@ConvertingColor