

Converting Colors

HunterLab(33.8602, 7.2939,
3.2627)

Have a look what the booklet for
HunterLab(33.8602, 7.2939, 3.2627)
contains.

HunterLab(33.8602, 7.2939, 3.2627)	3
<i>Conversions</i>	4
<i>Details</i>	6
<i>Harmonies</i>	12
<i>Previews</i>	24
<i>Color Blindness Simulation</i>	28
<i>CSS Examples</i>	31

Color

**HunterLab(33.8602, 7.2939,
3.2627)**

Conversions

Conversions Part 1

Format	Color
Hex	74585C
RGB	116, 88, 92
RGB Percent	45%, 35%, 36%
CMY	0.5451, 0.6549, 0.6392
CMYK	0.00, 0.24, 0.21, 0.55
HSL	351°, 14%, 40%
HSV	351°, 24%, 45%
XYZ	12.6239, 11.4651, 11.6729
YIQ	96.8280, 15.4040, 7.1800

Conversions

Conversions Part 2

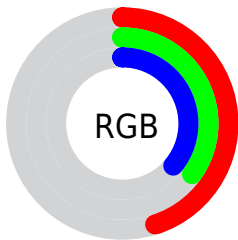
Format	Color
R_{YB}	116, 88, 92
Decimal	7624796
CIE _{Lab}	40.35, 12.20, 2.15
CIE _{LCh}	40, 12.392, 9.998
Yxy	11.4657, 0.3530, 0.3206
Android (android.graphics.Color)	4285814876 (0xFF74585C)
YUV	96.8280, -2.3802, 16.8138
Hunter-Lab	33.8602, 7.2939, 3.2627

Details

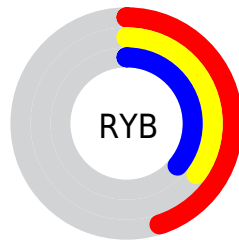
The HunterLab color **33.8602, 7.2939, 3.2627** is a dark color, and the websafe version is hex **666666**. A complement of this color would be **39.6681, -10.0440, 1.3545**, and the grayscale version is **34.5152, -1.8416, 1.8753**.

A 20% lighter version of the original color is **53.3430, 7.4373, 4.5557**, and **17.4542, 6.6382, 2.0912** is the 20% darker color. If you saturate the color by 10%, you get **30.8993, 11.4352, 3.9011**, and if you desaturate by 10%, it is **37.0264, 3.2609, 2.7670**.

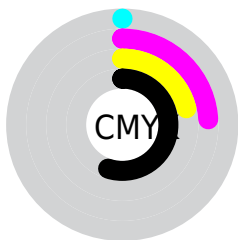
Distribution



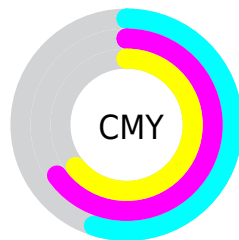
- Red (45%)
- Green (35%)
- Blue (36%)



- Red (45%)
- Yellow (35%)
- Blue (36%)



- Cyan (0%)
- Magenta (24%)
- Yellow (21%)
- Black (55%)



- Cyan (55%)
- Magenta (65%)
- Yellow (64%)

Brightness & Saturation Gradients

These gradients show how the HunterLab color 33.8602, 7.2939, 3.2627 changes by changing the brightness by 10 percent. The first figure shows a shift by +10% for each color and the second figure -10%.

Similar to the brightness gradients but the following saturation gradients show a change of the HunterLab color 33.8602, 7.2939, 3.2627 by changing the saturation by 10% instead.

33.8602, 7.2939,
3.2627

33.8602, 7.2939,
3.2627

141.7162, 6.6566,
10.0342

25.2606, 6.9934,
2.6568

53.4023, 7.6051,
4.5696

17.5445, 6.5733,
2.0817

64.2298, 7.6434,
5.2678

10.8288, 6.0020,
1.5362

75.7037, 7.6149,
5.9950

1.9795, 26.7593,
1.3856

87.7897, 7.5259,
6.7501

0.0000, NaN, NaN

0.0000, NaN, NaN

100.4580, 7.3817,
7.5324

0.0000, NaN, NaN

113.6832, 7.1865,

0.0000, NaN, NaN

127.4426, 6.9438,
9.1751

■ 33.8602, 7.2939,
3.2627

■ 33.8602, 7.2939,
3.2627

■ 30.8993, 11.4352,
3.9011

■ 37.0264, 3.2609,
2.7670

■ 28.1787, 15.6477,
4.6968

■ 40.3653, -0.6484,
2.3935

■ 25.7438, 19.8412,
5.6581

■ 43.8532, -4.4389,
2.1247

■ 23.6451, 23.8562,
6.7741

■ 47.4706, -8.1216,
1.9446

■ 21.9338, 27.4520,
8.0030

■ 51.2018, -11.7101,
1.8396

■ 20.6517, 30.3330,
9.2637

■ 55.0341, -15.2182,
1.7982

■ 19.7994, 32.2905,
10.4323

■ 58.9569, -18.6586,
1.8111

■ 19.3704, 33.3744,
10.9513

■ 62.9619, -22.0430,
1.8705

■ 67.0418, -25.3812,
1.9700

Harmonies

Analogous

The Analogous color harmony consists of three colors that are next to each other on the color wheel.



33.8610, 6.8559, -1.1445



33.8602, 7.2939, 3.2627



33.8610, 5.1937, 6.7905

Triad

The Triadic color harmony groups three colors that are evenly spaced from another and form a triangle on the color wheel.



33.8610, 7.2927, 3.2633



33.8610, -7.2767, 7.6449



33.8610, -4.7639, -6.9959

Complementary

The Complementary color scheme is a pair of colors which are on the opposite of each other on the color wheel.



33.8602, 7.2939, 3.2627



39.6681, -10.0440, 1.3545

Split Complementary

Split-complementary colors differ from the complementary color scheme. The scheme consists of three colors, the original color and two neighbors of the complement color.



33.8610, -8.2844, -3.9856



33.8602, 7.2939, 3.2627



33.8610, -9.6809, 4.5811

Square

The Square scheme is like the rectangle color scheme, but the four colors are evenly spaced on the color wheel.



33.8610, 7.2927, 3.2633



33.8610, -3.3215, 9.0888



33.8610, -10.0397, 0.3587



33.8610, -0.2685, -7.4718

Rectangle

The Rectangle color scheme consists of four colors that form a rectangle on the color wheel.



33.8602, 7.2939, 3.2627



33.8610, 2.7011, 8.3158



33.8610, -10.0397, 0.3587



33.8610, -6.0939, -6.2296

Sweetspot

The Sweet Spot groups the original color and five complimentary colors.



33.8610, 7.2927, 3.2633



52.1487, 0.6997, 3.3082



34.1651, 9.6939, -7.4520



25.3836, 0.4426, 1.6250



77.7063, -4.1462, 4.2219



27.0627, -1.4440, 1.4704

Same Dimension

The Same Dimension uses a secret algorithm to generate beautiful new colors.



33.8610, 7.2927, 3.2633



42.6591, 12.7281, 4.7754



36.2160, 2.2397, 7.2396



19.2577, 0.6249, 1.2751



20.5154, 35.3379, 11.6703



45.2006, 77.6850, 27.0562

Inverse Universe

The Inverse Universe completely reimagines the original color for something new.



33.8610, 7.2927, 3.2633



42.6591, 12.7281, 4.7754



36.9938, -5.1392, -3.7761



19.2577, 0.6249, 1.2751



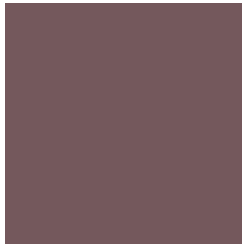
20.5154, 35.3379, 11.6703



45.2006, 77.6850, 27.0562

Previews

White Background



This preview shows how the HunterLab color 33.8602, 7.2939, 3.2627 looks on a white background.

Color Contrast Check

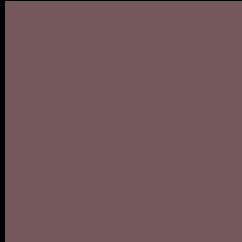
Large Text (above 18pt) WCAG AA ✓ Pass

Any Text WCAG AA ✓ Pass

Large Text (above 18pt) WCAG AAA ✓ Pass

Any Text WCAG AAA × Fail

Black Background



This preview shows how the HunterLab color 33.8602, 7.2939, 3.2627 looks on a black background.

Color Contrast Check

Large Text (above 18pt) WCAG AA ✓ Pass

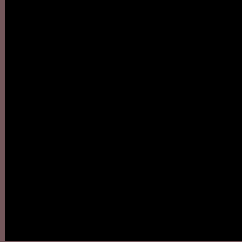
Any Text WCAG AA × Fail

Large Text (above 18pt) WCAG AAA × Fail

Any Text WCAG AAA × Fail

If you want to check with other color combinations, try the [Color Contrast Checker](#).

HunterLab 33.8602, 7.2939, 3.2627 Background



This preview shows how black text looks on a background with the HunterLab color 33.8602, 7.2939, 3.2627.



This preview shows how white text looks on a background with the HunterLab color 33.8602, 7.2939,

Color Blindness Simulation

Color vision deficiency is a very complex topic, and I could not describe the different causes any better than Wikipedia does, so if you want to learn more, you should check out their [article about color blindness](#).

Dichromacy



Original Color

33.8602, 7.2939, 3.2627

Protanopia

34.0152, -1.1029, 1.6516

Deuteranopia

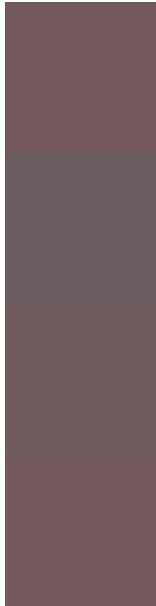
33.8730, 2.1633, 3.5860



Tritanopia

33.9125, 7.5661, 2.5151

Trichromacy



Original Color

33.8602, 7.2939, 3.2627

Protanomaly

33.7988, 2.1233, 1.8720

Deuteranomaly

33.9890, 3.8539, 3.7462

Tritanomaly

33.8862, 7.4292, 2.8911

Monochromacy



Original Color

33.8602, 7.2939, 3.2627

Achromatopsia

34.5743, -1.8448, 1.8785

Achromatomaly

34.3143, 1.2140, 2.4590

CSS Examples

Text

The CSS property to change the color of the text to HunterLab 33.8602, 7.2939, 3.2627 is called "color". The color property can be set on classes, ids or directly on the HTML element.

This example shows how text in the color `rgb(116, 88, 92)` looks like.

```
.text, #text, p{  
    color:rgb(116, 88, 92)  
}
```

If you want to add a text shadow in that color use the text-shadow property, you can generate a text shadow directly with our [CSS Text Shadow Generator](#).

Here you see how black text with a 4 pixel rgb(116, 88, 92) colored shadow looks like.

```
.shadow{ text-shadow: 4px 4px 2px rgb(116, 88, 92) }
```

Border

The CSS property to change the border of an element to HunterLab 33.8602, 7.2939, 3.2627 is called "border". The border property can be set on classes, ids or directly on the HTML element.

This example shows the color as border, it can be applied via the CSS property "border" or "border-color".

```
.border, #border, table{ border:4px solid rgb(116, 88, 92) }
```


If only the border color should be changed use the property `border-color`.

```
.border{ border-color:rgb(116, 88, 92) }
```

If you want to add a box shadow in that color use:

Here you see how a box with a 4 pixel `rgb(116, 88, 92)` colored shadow looks like.

```
.boxshadow{ -moz-box-shadow:4px 4px 4px  
4px rgb(116, 88, 92); -webkit-box-  
shadow:4px 4px 4px 4px rgb(116, 88, 92);  
box-shadow:4px 4px 4px 4px rgb(116, 88,  
92) }
```

Background

The CSS property to change the background color of an element to HunterLab 33.8602, 7.2939, 3.2627 is called "background". The background property can be set on classes, ids or directly on the HTML element.

```
.background, #background, body{  
background: rgb(116, 88, 92) }
```

If only the background color should be changed can be used:

```
.background{ background-color: rgb(116, 88,  
92) }
```

This example shows the color as background, it is applied via the CSS property "background".

To optimize and compress your CSS code, you can use our [online CSS compressor and optimizer](#) based on csstidy. If you want to create a linear or radial gradient as background or border, check our [CSS Gradient Generator](#).

Hey! You found this booklet interesting? Support Converting Colors with the new Membership Option!

The pro membership hides all ads, plus gives you double the colors in the color bucket, and more awesome pro features!

[Learn more, Memberships starting at \\$2.50/m!](#)

**Follow me
on Twitter!**

@ConvertingColor