

Converting Colors

HunterLab(33.8998, 1.6051,
11.2679)

Have a look what the booklet for
HunterLab(33.8998, 1.6051,
11.2679) contains.

HunterLab(33.9358, 1.3783, 11.3805)	3
<i>Conversions</i>	4
<i>Details</i>	6
<i>Harmonies</i>	12
<i>Previews</i>	24
<i>Color Blindness Simulation</i>	28
<i>CSS Examples</i>	31

Color

**HunterLab(33.9358, 1.3783,
11.3805)**

Conversions

Conversions Part 1

Format	Color
Hex	705C44
RGB	112, 92, 68
RGB Percent	44%, 36%, 27%
CMY	0.5608, 0.6392, 0.7333
CMYK	0.00, 0.18, 0.39, 0.56
HSL	33°, 24%, 35%
HSV	33°, 39%, 44%
XYZ	11.5526, 11.5164, 7.0828
YIQ	95.2440, 19.6240, -3.2240

Conversions

Conversions Part 2

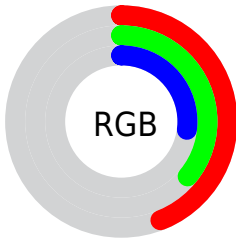
Format	Color
RYB	105, 112, 68
Decimal	7363652
CIELab	40.44, 4.41, 16.87
CIElCh	40, 17.438, 75.345
Yxy	11.5169, 0.3831, 0.3820
Android (android.graphics.Color)	4285553732 (0xFF705C44)
YUV	95.2440, -13.4313, 14.6950
Hunter-Lab	33.9358, 1.3783, 11.3805

Details

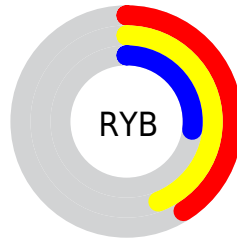
The HunterLab color **33.9358, 1.3783, 11.3805** is a dark color, and the websafe version is hex **666633**. A complement of this color would be **30.6233, -2.3076, -10.8494**, and the grayscale version is **33.9631, -1.8122, 1.8453**.

A 20% lighter version of the original color is **53.4848, 0.9914, 14.6581**, and **17.5405, 1.7849, 7.9187** is the 20% darker color. If you saturate the color by 10%, you get **32.4661, 2.6556, 13.0303**, and if you desaturate by 10%, it is **35.4666, 0.2609, 9.4289**.

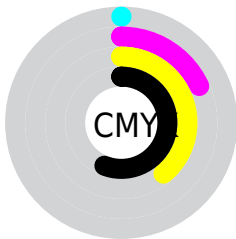
Distribution



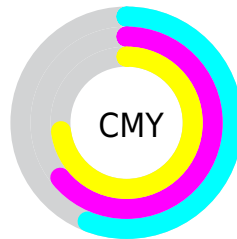
- Red (44%)
- Green (36%)
- Blue (27%)



- Red (41%)
- Yellow (44%)
- Blue (27%)



- Cyan (0%)
- Magenta (18%)
- Yellow (39%)
- Black (56%)



- Cyan (56%)
- Magenta (64%)
- Yellow (73%)

Brightness & Saturation Gradients

These gradients show how the HunterLab color 33.9358, 1.3783, 11.3805 changes by changing the brightness by 10 percent. The first figure shows a shift by +10% for each color and the second figure -10%.

Similar to the brightness gradients but the following saturation gradients show a change of the HunterLab color 33.9358, 1.3783, 11.3805 by changing the saturation by 10% instead.

■ 33.9358, 1.3783,
11.3805

■ 33.9358, 1.3783,
11.3805

141.8381, -2.4946,
24.8767

■ 25.3291, 1.5517,
9.6901

■ 53.4903, 0.8375,
14.5478

■ 17.6052, 1.6480,
7.8757

■ 64.3233, 0.4871,
16.0673

■ 10.8806, 1.6469,
7.1876

■ 75.8026, 0.0896,
17.5615

■ 2.2015, 8.6143,
1.5411

■ 87.8935, -0.3512,
19.0386

0.0000, NaN, NaN

0.0000, NaN, NaN

■ 100.5667, -0.8324,
20.5047

0.0000, NaN, NaN

113.7964, -1.3514,

0.0000, NaN, NaN

127.5602, -1.9061,
23.4207

■ 33.9358, 1.3783,
11.3805

■ 33.9358, 1.3783,
11.3805

■ 32.4661, 2.6556,
13.0303

■ 35.4666, 0.2609,
9.4289

■ 31.0592, 4.1020,
14.3546

■ 37.0521, -0.7002,
7.1973

■ 29.7203, 5.7182,
15.3337

■ 38.6894, -1.5148,
4.7088

■ 28.4535, 7.5017,
15.9530

■ 40.3749, -2.1918,
1.9849

■ 27.2627, 9.4432,
16.2079

■ 42.1054, -2.7407,
-0.9546

■ 26.1410, 11.4748,
16.2567

■ 43.8780, -3.1703,
-4.0912

■ 26.0628, 11.6195,
16.2632

■ 45.6900, -3.4895,
-7.4083

■ 47.5388, -3.7063,
-10.8911

■ 49.4224, -3.8285,
-14.5261

Harmonies

Analogous

The Analogous color harmony consists of three colors that are next to each other on the color wheel.



33.9366, 7.3354, 9.2031



33.9358, 1.3783, 11.3805



33.9366, -5.0275, 11.3558

Triad

The Triadic color harmony groups three colors that are evenly spaced from another and form a triangle on the color wheel.



33.9366, 1.3770, 11.3809



33.9366, -12.9464, -1.4199



33.9366, 7.4519, -7.5173

Complementary

The Complementary color scheme is a pair of colors which are on the opposite of each other on the color wheel.



33.9358, 1.3783, 11.3805



30.6233, -2.3076, -10.8494

Split Complementary

Split-complementary colors differ from the complementary color scheme. The scheme consists of three colors, the original color and two neighbors of the complement color.



33.9366, 1.5266, -11.5871



33.9358, 1.3783, 11.3805



33.9366, -10.0837, -7.6448

Square

The Square scheme is like the rectangle color scheme, but the four colors are evenly spaced on the color wheel.



33.9366, 1.3770, 11.3809



33.9366, -12.9799, 4.6940



33.9366, -4.8886, -11.6377



33.9366, 11.0162, -1.2697

Rectangle

The Rectangle color scheme consists of four colors that form a rectangle on the color wheel.



33.9358, 1.3783, 11.3805



33.9366, -8.6825, 10.1187



33.9366, -4.8886, -11.6377



33.9366, 5.6514, -9.2328

Sweetspot

The Sweet Spot groups the original color and five complimentary colors.



33.9366, 1.3770, 11.3809



50.6157, -1.7004, 7.2746



28.7968, 14.8950, -1.2433



24.7101, -0.7857, 3.7178



76.6170, -4.0881, 4.1627



26.1505, -1.3953, 1.4208

Same Dimension

The Same Dimension uses a secret algorithm to generate beautiful new colors.



33.9366, 1.3770, 11.3809



43.2329, 3.3309, 17.0603



39.1854, -7.8322, 15.7339



19.1699, -0.7600, 2.2937



27.9405, 12.6715, 17.4387



60.9485, 31.3874, 38.1057

Inverse Universe

The Inverse Universe completely reimagines the original color for something new.



30.6233, -2.3076, -10.8494



37.9172, -2.4600, -18.7880



25.6643, 7.1076, -19.4751



18.7802, -1.2066, -0.3011



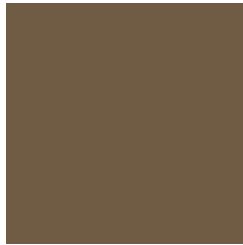
20.0866, 6.8125, -39.8127



42.9156, 19.2428, -95.1806

Previews

White Background



This preview shows how the HunterLab color 33.9358, 1.3783, 11.3805 looks on a white background.

Color Contrast Check

Large Text (above 18pt) WCAG AA ✓ Pass

Any Text WCAG AA ✓ Pass

Large Text (above 18pt) WCAG AAA ✓ Pass

Any Text WCAG AAA × Fail

Black Background



This preview shows how the HunterLab color 33.9358, 1.3783, 11.3805 looks on a black background.

Color Contrast Check

Large Text (above 18pt) WCAG AA ✓ Pass

Any Text WCAG AA × Fail

Large Text (above 18pt) WCAG AAA × Fail

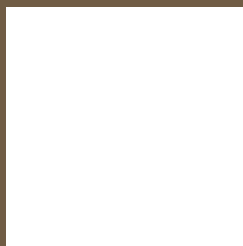
Any Text WCAG AAA × Fail

If you want to check with other color combinations, try the [Color Contrast Checker](#).

HunterLab 33.9358, 1.3783, 11.3805 Background



This preview shows how black text looks on a background with the HunterLab color 33.9358, 1.3783, 11.3805.



This preview shows how white text looks on a background with the HunterLab color 33.9358, 1.3783,

Color Blindness Simulation

Color vision deficiency is a very complex topic, and I could not describe the different causes any better than Wikipedia does, so if you want to learn more, you should check out their [article about color blindness](#).

Dichromacy



Original Color

33.9358, 1.3783, 11.3805

Protanopia

33.9082, -2.6969, 11.0022

Deuteranopia

33.7790, 2.1561, 11.2532



Tritanopia

33.8386, 7.3825, 2.0109

Trichromacy



Original Color

33.9358, 1.3783, 11.3805

Protanomaly

33.9105, -1.3319, 11.0282

Deuteranomaly

33.7790, 2.1561, 11.2532

Tritanomaly

33.7314, 5.2736, 5.7711

Monochromacy



Original Color

33.9358, 1.3783, 11.3805

Achromatopsia

33.8283, -1.8050, 1.8380

Achromatomaly

33.8053, -1.0280, 5.7394

CSS Examples

Text

The CSS property to change the color of the text to HunterLab 33.9358, 1.3783, 11.3805 is called "color". The color property can be set on classes, ids or directly on the HTML element.

This example shows how text in the color `rgb(112, 92, 68)` looks like.

```
.text, #text, p{  
    color:rgb(112, 92, 68)  
}
```

If you want to add a text shadow in that color use the text-shadow property, you can generate a text shadow directly with our [CSS Text Shadow Generator](#).

Here you see how black text with a 4 pixel rgb(112, 92, 68) colored shadow looks like.

```
.shadow{ text-shadow: 4px 4px 2px rgb(112, 92, 68) }
```

Border

The CSS property to change the border of an element to HunterLab 33.9358, 1.3783, 11.3805 is called "border". The border property can be set on classes, ids or directly on the HTML element.

This example shows the color as border, it can be applied via the CSS property "border" or "border-color".

```
.border, #border, table{ border:4px solid rgb(112, 92, 68) }
```


If only the border color should be changed use the property border-color.

```
.border{ border-color:rgb(112, 92, 68) }
```

If you want to add a box shadow in that color use:

Here you see how a box with a 4 pixel rgb(112, 92, 68) colored shadow looks like.

```
.boxshadow{ -moz-box-shadow:4px 4px 4px  
4px rgb(112, 92, 68); -webkit-box-  
shadow:4px 4px 4px 4px rgb(112, 92, 68);  
box-shadow:4px 4px 4px 4px rgb(112, 92,  
68) }
```

Background

The CSS property to change the background color of an element to HunterLab 33.9358, 1.3783, 11.3805 is called "background". The background property can be set on classes, ids or directly on the HTML element.

```
.background, #background, body{  
background: rgb(112, 92, 68) }
```

If only the background color should be changed can be used:

```
.background{ background-color: rgb(112, 92,  
68) }
```

This example shows the color as background, it is applied via the CSS property "background".

To optimize and compress your CSS code, you can use our [online CSS compressor and optimizer](#) based on csstidy. If you want to create a linear or radial gradient as background or border, check our [CSS Gradient Generator](#).

Hey! You found this booklet interesting? Support Converting Colors with the new Membership Option!

The pro membership hides all ads, plus gives you double the colors in the color bucket, and more awesome pro features!

[Learn more, Memberships starting at \\$2.50/m!](#)

**Follow me
on Twitter!**

@ConvertingColor