

Converting Colors

HunterLab(34.2189, 5.8158,
2.8470)

Have a look what the booklet for
HunterLab(34.2189, 5.8158, 2.8470)
contains.

HunterLab(34.2022, 5.9885, 2.8227)	3
<i>Conversions</i>	4
<i>Details</i>	6
<i>Harmonies</i>	12
<i>Previews</i>	24
<i>Color Blindness Simulation</i>	28
<i>CSS Examples</i>	31

Color

**HunterLab(34.2022, 5.9885,
2.8227)**

Conversions

Conversions Part 1

Format	Color
Hex	725A5E
RGB	114, 90, 94
RGB Percent	45%, 35%, 37%
CMY	0.5529, 0.6470, 0.6314
CMYK	0.00, 0.21, 0.18, 0.55
HSL	350°, 12%, 40%
HSV	350°, 21%, 45%
XYZ	12.6160, 11.6979, 12.1827
YIQ	97.6320, 13.0200, 6.3320

Conversions

Conversions Part 2

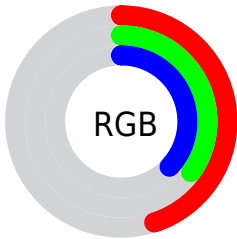
Format	Color
R_{YB}	114, 90, 94
Decimal	7494238
CIE _{Lab}	40.73, 10.52, 1.44
CIE _{LCh}	41, 10.616, 7.801
Yxy	11.6984, 0.3457, 0.3205
Android (android.graphics.Color)	4285684318 (0xFF725A5E)
YUV	97.6320, -1.7906, 14.3547
Hunter-Lab	34.2022, 5.9885, 2.8227

Details

The HunterLab color **34.2022, 5.9885, 2.8227** is a dark color, and the websafe version is hex **666666**. A complement of this color would be **39.1591, -9.0482, 1.6347**, and the grayscale version is **34.8144, -1.8576, 1.8915**.

A 20% lighter version of the original color is **53.7371, 6.0703, 4.1067**, and **17.8130, 5.7134, 1.7689** is the 20% darker color. If you saturate the color by 10%, you get **31.2414, 10.0440, 3.3133**, and if you desaturate by 10%, it is **37.3532, 2.0395, 2.4745**.

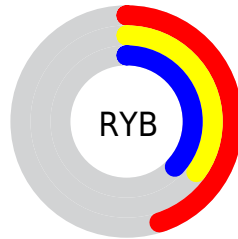
Distribution



Red (45%)

Green (35%)

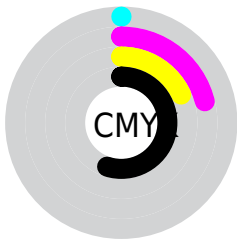
Blue (37%)



Red (45%)

Yellow (35%)

Blue (37%)

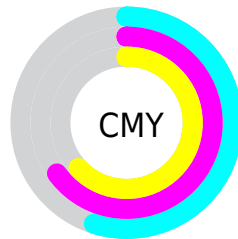


Cyan (0%)

Magenta (21%)

Yellow (18%)

Black (55%)



Cyan (55%)

Magenta (65%)

Yellow (63%)

Brightness & Saturation Gradients

These gradients show how the HunterLab color 34.2022, 5.9885, 2.8227 changes by changing the brightness by 10 percent. The first figure shows a shift by +10% for each color and the second figure -10%.

Similar to the brightness gradients but the following saturation gradients show a change of the HunterLab color 34.2022, 5.9885, 2.8227 by changing the saturation by 10% instead.

■ 34.2022, 5.9885,
2.8227

■ 34.2022, 5.9885,
2.8227

■ 142.2668, 4.6443,
9.3044

■ 25.5708, 5.7909,
2.2618

■ 53.8002, 6.1142,
4.0511

■ 17.8194, 5.4822,
1.7374

■ 64.6529, 6.0676,
4.7142

■ 11.0631, 5.0323,
1.2513

■ 76.1506, 5.9585,
5.4083

■ 2.8482, 15.9392,
1.9937

■ 88.2591, 5.7925,
6.1322

0.0000, NaN, NaN

0.0000, NaN, NaN

■ 100.9490, 5.5746,
6.8847

0.0000, NaN, NaN

114.1948, 5.3085,

0.0000, NaN, NaN

7.6648

0.0000, NaN, NaN

127.9740, 4.9975,
8.4717

■ 34.2022, 5.9885,
2.8227

■ 34.2022, 5.9885,
2.8227

■ 31.2414, 10.0440,
3.3133

■ 37.3532, 2.0395,
2.4745

■ 28.5025, 14.1790,
3.9648

■ 40.6646, -1.7928,
2.2465

■ 26.0272, 18.3211,
4.7932

■ 44.1150, -5.5151,
2.1206

■ 23.8631, 22.3372,
5.8005

■ 47.6867, -9.1384,
2.0809

■ 22.0601, 26.0168,
6.9632

■ 51.3654, -12.6757,
2.1141

■ 20.6633, 29.0833,
8.2208

■ 55.1394, -16.1400,
2.2092

■ 19.6986, 31.2583,
9.4734

■ 58.9992, -19.5431,
2.3570

■ 19.0379, 32.8498,
10.3887

■ 62.9369, -22.8955,
2.5503

■ 66.9459, -26.2064,
2.7829

Harmonies

Analogous

The Analogous color harmony consists of three colors that are next to each other on the color wheel.



34.2030, 5.4555, -0.9674



34.2022, 5.9885, 2.8227



34.2030, 4.3518, 5.9816

Triad

The Triadic color harmony groups three colors that are evenly spaced from another and form a triangle on the color wheel.



34.2030, 5.9874, 2.8233



34.2030, -6.3368, 7.0690



34.2030, -4.6356, -5.4858

Complementary

The Complementary color scheme is a pair of colors which are on the opposite of each other on the color wheel.



34.2022, 5.9885, 2.8227



39.1591, -9.0482, 1.6347

Split Complementary

Split-complementary colors differ from the complementary color scheme. The scheme consists of three colors, the original color and two neighbors of the complement color.



34.2030, -7.5958, -2.8443



34.2022, 5.9885, 2.8227



34.2030, -8.5466, 4.4681

Square

The Square scheme is like the rectangle color scheme, but the four colors are evenly spaced on the color wheel.



34.2030, 5.9874, 2.8233



34.2030, -2.8466, 8.2460



34.2030, -8.9969, 0.8715



34.2030, -0.7949, -6.0542

Rectangle

The Rectangle color scheme consists of four colors that form a rectangle on the color wheel.



34.2022, 5.9885, 2.8227



34.2030, 2.2941, 7.4037



34.2030, -8.9969, 0.8715



34.2030, -5.7614, -4.7976

Sweetspot

The Sweet Spot groups the original color and five complimentary colors.



34.2030, 5.9874, 2.8233



51.6408, 0.1975, 3.1139



34.4134, 7.8511, -6.0849



24.7384, 0.2059, 1.5041



76.6170, -4.0881, 4.1627



26.1505, -1.3953, 1.4208

Same Dimension

The Same Dimension uses a secret algorithm to generate beautiful new colors.



34.2030, 5.9874, 2.8233



43.5034, 10.3909, 4.0161



36.1268, 1.7660, 6.4162



18.4655, 0.6013, 1.1743



20.0817, 34.6414, 11.0314



44.7207, 76.9467, 26.0974

Inverse Universe

The Inverse Universe completely reimagines the original color for something new.



34.2030, 5.9874, 2.8233



43.5034, 10.3909, 4.0161



37.0095, -4.9210, -2.7847



18.4655, 0.6013, 1.1743



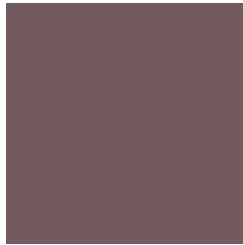
20.0817, 34.6414, 11.0314



44.7207, 76.9467, 26.0974

Previews

White Background



This preview shows how the HunterLab color 34.2022, 5.9885, 2.8227 looks on a white background.

Color Contrast Check

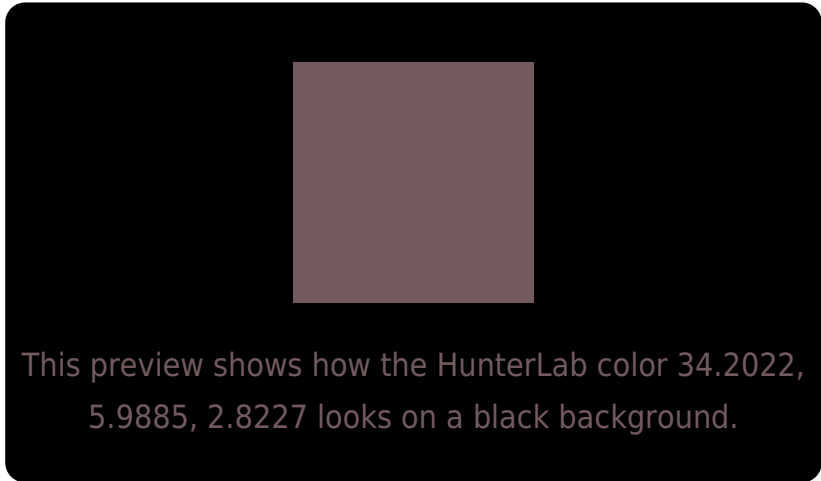
Large Text (above 18pt) WCAG AA ✓ Pass

Any Text WCAG AA ✓ Pass

Large Text (above 18pt) WCAG AAA ✓ Pass

Any Text WCAG AAA × Fail

Black Background



Color Contrast Check

Large Text (above 18pt) WCAG AA ✓ Pass

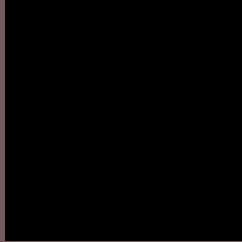
Any Text WCAG AA × Fail

Large Text (above 18pt) WCAG AAA × Fail

Any Text WCAG AAA × Fail

If you want to check with other color combinations, try the [Color Contrast Checker](#).

HunterLab 34.2022, 5.9885, 2.8227 Background



This preview shows how black text looks on a background with the HunterLab color 34.2022, 5.9885, 2.8227.



This preview shows how white text looks on a background with the HunterLab color 34.2022, 5.9885,

Color Blindness Simulation

Color vision deficiency is a very complex topic, and I could not describe the different causes any better than Wikipedia does, so if you want to learn more, you should check out their [article about color blindness](#).

Dichromacy



Original Color

34.2022, 5.9885, 2.8227

Protanopia

34.3882, -1.1215, 1.6715

Deuteranopia

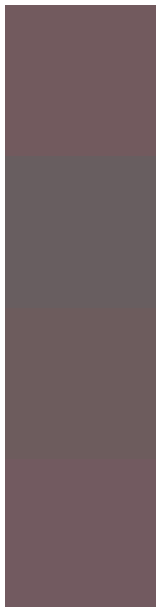
34.1807, 1.9839, 3.1333



Tritanopia

34.2824, 6.4090, 1.6779

Trichromacy



Original Color

34.2022, 5.9885, 2.8227

Protanomaly

34.3409, 1.3576, 2.0783

Deuteranomaly

34.1991, 3.3567, 3.1784

Tritanomaly

34.2553, 6.2673, 2.0638

Monochromacy



Original Color

34.2022, 5.9885, 2.8227

Achromatopsia

34.9484, -1.8648, 1.8988

Achromatomaly

34.6274, 1.0483, 1.9915

CSS Examples

Text

The CSS property to change the color of the text to HunterLab 34.2022, 5.9885, 2.8227 is called "color". The color property can be set on classes, ids or directly on the HTML element.

This example shows how text in the color `rgb(114, 90, 94)` looks like.

```
.text, #text, p{  
    color:rgb(114, 90, 94)  
}
```

If you want to add a text shadow in that color use the text-shadow property, you can generate a text shadow directly with our [CSS Text Shadow Generator](#).

Here you see how black text with a 4 pixel rgb(114, 90, 94) colored shadow looks like.

```
.shadow{ text-shadow: 4px 4px 2px rgb(114, 90, 94) }
```

Border

The CSS property to change the border of an element to HunterLab 34.2022, 5.9885, 2.8227 is called "border". The border property can be set on classes, ids or directly on the HTML element.

This example shows the color as border, it can be applied via the CSS property "border" or "border-color".

```
.border, #border, table{ border:4px solid rgb(114, 90, 94) }
```


If only the border color should be changed use the property border-color.

```
.border{ border-color:rgb(114, 90, 94) }
```

If you want to add a box shadow in that color use:

Here you see how a box with a 4 pixel rgb(114, 90, 94) colored shadow looks like.

```
.boxshadow{ -moz-box-shadow:4px 4px 4px  
4px rgb(114, 90, 94); -webkit-box-  
shadow:4px 4px 4px 4px rgb(114, 90, 94);  
box-shadow:4px 4px 4px 4px rgb(114, 90,  
94) }
```

Background

The CSS property to change the background color of an element to HunterLab 34.2022, 5.9885, 2.8227 is called "background". The background property can be set on classes, ids or directly on the HTML element.

```
.background, #background, body{  
background: rgb(114, 90, 94) }
```

If only the background color should be changed can be used:

```
.background{ background-color: rgb(114, 90,  
94) }
```

This example shows the color as background, it is applied via the CSS property "background".

To optimize and compress your CSS code, you can use our [online CSS compressor and optimizer](#) based on csstidy. If you want to create a linear or radial gradient as background or border, check our [CSS Gradient Generator](#).

Hey! You found this booklet interesting? Support Converting Colors with the new Membership Option!

The pro membership hides all ads, plus gives you double the colors in the color bucket, and more awesome pro features!

[Learn more, Memberships starting at \\$2.50/m!](#)

**Follow me
on Twitter!**

@ConvertingColor