

Converting Colors

HunterLab(34.4195, 6.7195,
10.1821)

Have a look what the booklet for
HunterLab(34.4195, 6.7195,
10.1821) contains.

HunterLab(34.3173, 6.7027, 10.0704)	3
<i>Conversions</i>	4
<i>Details</i>	6
<i>Harmonies</i>	12
<i>Previews</i>	24
<i>Color Blindness Simulation</i>	28
<i>CSS Examples</i>	31

Color

**HunterLab(34.3173, 6.7027,
10.0704)**

Conversions

Conversions Part 1

Format	Color
Hex	7A594A
RGB	122, 89, 74
RGB Percent	48%, 35%, 29%
CMY	0.5216, 0.6510, 0.7098
CMYK	0.00, 0.27, 0.39, 0.52
HSL	19°, 24%, 38%
HSV	19°, 39%, 48%
XYZ	12.8345, 11.7768, 8.0753
YIQ	97.1570, 24.4830, 2.3310

Conversions

Conversions Part 2

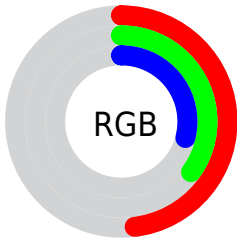
Format	Color
RYB	122, 96, 74
Decimal	8018250
CIELab	40.86, 11.43, 14.00
CIELCh	41, 18.079, 50.773
Yxy	11.7773, 0.3926, 0.3603
Android (android.graphics.Color)	4286208330 (0xFF7A594A)
YUV	97.1570, -11.4164, 21.7873
Hunter-Lab	34.3173, 6.7027, 10.0704

Details

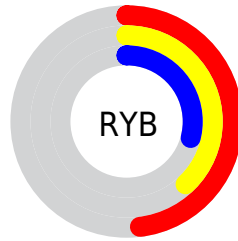
The HunterLab color **34.3173, 6.7027, 10.0704** is a dark color, and the websafe version is hex **996666**. A complement of this color would be **36.5731, -7.4148, -7.4426**, and the grayscale version is **34.6686, -1.8498, 1.8836**.

A 20% lighter version of the original color is **53.9680, 7.1375, 12.7929**, and **17.8863, 6.3294, 7.0607** is the 20% darker color. If you saturate the color by 10%, you get **32.1111, 9.4225, 11.5896**, and if you desaturate by 10%, it is **36.6530, 4.1577, 8.3478**.

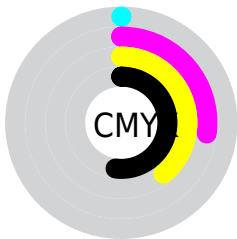
Distribution



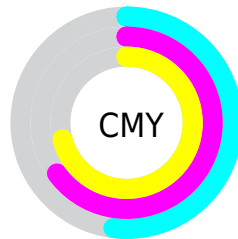
- Red (48%)
- Green (35%)
- Blue (29%)



- Red (48%)
- Yellow (38%)
- Blue (29%)



- Cyan (0%)
- Magenta (27%)
- Yellow (39%)
- Black (52%)



- Cyan (52%)
- Magenta (65%)
- Yellow (71%)

Brightness & Saturation Gradients

These gradients show how the HunterLab color 34.3173, 6.7027, 10.0704 changes by changing the brightness by 10 percent. The first figure shows a shift by +10% for each color and the second figure -10%.

Similar to the brightness gradients but the following saturation gradients show a change of the HunterLab color 34.3173, 6.7027, 10.0704 by changing the saturation by 10% instead.

■ 34.3173, 6.7027,
10.0704

■ 34.3173, 6.7027,
10.0704

142.4519, 5.7246,
22.1847

■ 25.6754, 6.4523,
8.6092

■ 53.9341, 6.9235,
12.8491

■ 17.9121, 6.0872,
7.0587

■ 64.7952, 6.9208,
14.1988

■ 11.1422, 5.5764,
6.0438

■ 76.3009, 6.8534,
15.5353

■ 3.0856, 15.9809,
2.1599

■ 88.4170, 6.7274,
16.8646

0.0000, NaN, NaN

0.0000, NaN, NaN

■ 101.1141, 6.5478,
18.1913

0.0000, NaN, NaN

114.3668, 6.3186,

0.0000, NaN, NaN

19.5186

0.0000, NaN, NaN

128.1527, 6.0432,
20.8491

■ 34.3173, 6.7027,
10.0704

■ 34.3173, 6.7027,
10.0704

■ 32.1111, 9.4225,
11.5896

■ 36.6530, 4.1577,
8.3478

■ 30.0482, 12.3178,
12.8656

■ 39.1014, 1.7864,
6.4530

■ 28.1474, 15.3684,
13.8567

■ 41.6511, -0.4234,
4.4136

■ 26.4283, 18.5336,
14.5206

■ 44.2915, -2.4850,
2.2515

■ 24.9103, 21.7439,
14.8239

■ 47.0135, -4.4123,
-0.0154

■ 23.6000, 24.8476,
14.9194

■ 49.8094, -6.2190,
-2.3729

■ 23.5207, 25.0409,
14.9317

■ 52.6726, -7.9179,
-4.8095

■ 55.5974, -9.5209,
-7.3159

■ 58.5788, -11.0386,
-9.8847

Harmonies

Analogous

The Analogous color harmony consists of three colors that are next to each other on the color wheel.



34.3181, 11.0641, 5.9369



34.3173, 6.7027, 10.0704



34.3181, 0.2576, 11.8976

Triad

The Triadic color harmony groups three colors that are evenly spaced from another and form a triangle on the color wheel.



34.3181, 6.7012, 10.0709



34.3181, -13.6473, 3.7759



34.3181, 2.8573, -11.6815

Complementary

The Complementary color scheme is a pair of colors which are on the opposite of each other on the color wheel.



34.3173, 6.7027, 10.0704



36.5731, -7.4148, -7.4426

Split Complementary

Split-complementary colors differ from the complementary color scheme. The scheme consists of three colors, the original color and two neighbors of the complement color.



34.3181, -3.8747, -12.5659



34.3173, 6.7027, 10.0704



34.3181, -13.0682, -2.7695

Square

The Square scheme is like the rectangle color scheme, but the four colors are evenly spaced on the color wheel.



34.3181, 6.7012, 10.0709



34.3181, -11.2545, 8.7504



34.3181, -9.6070, -9.0475



34.3181, 8.7292, -6.8222

Rectangle

The Rectangle color scheme consists of four colors that form a rectangle on the color wheel.



34.3173, 6.7027, 10.0704



34.3181, -4.2082, 11.8592



34.3181, -9.6070, -9.0475



34.3181, 0.6087, -12.4858

Sweetspot

The Sweet Spot groups the original color and five complimentary colors.



34.3181, 6.7012, 10.0709



54.2361, 0.2806, 6.6691



31.7954, 18.2409, -6.3366



25.7769, 0.2683, 3.3155



78.7982, -4.2045, 4.2813



27.9800, -1.4929, 1.5202

Same Dimension

The Same Dimension uses a secret algorithm to generate beautiful new colors.



34.3181, 6.7012, 10.0709



42.9363, 12.0486, 15.1445



40.3842, -3.9274, 15.3041



20.4954, -0.2365, 2.1399



24.1056, 25.7735, 15.3050



51.3398, 59.9969, 32.6857

Inverse Universe

The Inverse Universe completely reimagines the original color for something new.



36.5731, -7.4148, -7.4426



46.5193, -10.5587, -12.8055



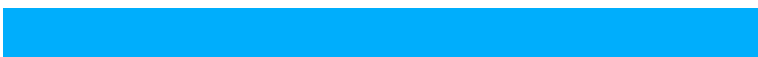
30.2323, 3.0450, -17.4271



20.7632, -1.8927, 0.0734



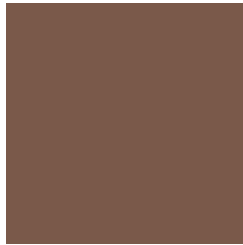
28.4928, -5.8966, -22.8845



60.9537, -10.9366, -52.5779

Previews

White Background



This preview shows how the HunterLab color 34.3173, 6.7027, 10.0704 looks on a white background.

Color Contrast Check

Large Text (above 18pt) WCAG AA ✓ Pass

Any Text WCAG AA ✓ Pass

Large Text (above 18pt) WCAG AAA ✓ Pass

Any Text WCAG AAA × Fail

Black Background



This preview shows how the HunterLab color 34.3173, 6.7027, 10.0704 looks on a black background.

Color Contrast Check

Large Text (above 18pt) WCAG AA ✓ Pass

Any Text WCAG AA × Fail

Large Text (above 18pt) WCAG AAA × Fail

Any Text WCAG AAA × Fail

If you want to check with other color combinations, try the [Color Contrast Checker](#).

HunterLab 34.3173, 6.7027, 10.0704 Background



This preview shows how black text looks on a background with the HunterLab color 34.3173, 6.7027, 10.0704.



This preview shows how white text looks on a background with the HunterLab color 34.3173, 6.7027,

Color Blindness Simulation

Color vision deficiency is a very complex topic, and I could not describe the different causes any better than Wikipedia does, so if you want to learn more, you should check out their [article about color blindness](#).

Dichromacy



Original Color

34.3173, 6.7027, 10.0704

Protanopia

34.3295, -2.2780, 8.9876

Deuteranopia

34.4777, 2.0829, 10.4419



Tritanopia

34.2505, 11.0215, 3.3711

Trichromacy



Original Color

34.3173, 6.7027, 10.0704

Protanomaly

34.1548, 1.1106, 9.1962

Deuteranomaly

34.5214, 3.5279, 10.5078

Tritanomaly

34.2041, 9.3229, 5.9785

Monochromacy



Original Color

34.3173, 6.7027, 10.0704

Achromatopsia

34.5743, -1.8448, 1.8785

Achromatomaly

34.3378, 0.9881, 4.8570

CSS Examples

Text

The CSS property to change the color of the text to HunterLab 34.3173, 6.7027, 10.0704 is called "color". The color property can be set on classes, ids or directly on the HTML element.

This example shows how text in the color `rgb(122, 89, 74)` looks like.

```
.text, #text, p{  
    color:rgb(122, 89, 74)  
}
```

If you want to add a text shadow in that color use the text-shadow property, you can generate a text shadow directly with our [CSS Text Shadow Generator](#).

Here you see how black text with a 4 pixel rgb(122, 89, 74) colored shadow looks like.

```
.shadow{ text-shadow: 4px 4px 2px rgb(122, 89, 74) }
```

Border

The CSS property to change the border of an element to HunterLab 34.3173, 6.7027, 10.0704 is called "border". The border property can be set on classes, ids or directly on the HTML element.

This example shows the color as border, it can be applied via the CSS property "border" or "border-color".

```
.border, #border, table{ border:4px solid rgb(122, 89, 74) }
```


If only the border color should be changed use the property `border-color`.

```
.border{ border-color:rgb(122, 89, 74) }
```

If you want to add a box shadow in that color use:

Here you see how a box with a 4 pixel `rgb(122, 89, 74)` colored shadow looks like.

```
.boxshadow{ -moz-box-shadow:4px 4px 4px  
4px rgb(122, 89, 74); -webkit-box-  
shadow:4px 4px 4px 4px rgb(122, 89, 74);  
box-shadow:4px 4px 4px 4px rgb(122, 89,  
74) }
```

Background

The CSS property to change the background color of an element to HunterLab 34.3173, 6.7027, 10.0704 is called "background". The background property can be set on classes, ids or directly on the HTML element.

```
.background, #background, body{  
background: rgb(122, 89, 74) }
```

If only the background color should be changed can be used:

```
.background{ background-color: rgb(122, 89,  
74) }
```

This example shows the color as background, it is applied via the CSS property "background".

To optimize and compress your CSS code, you can use our [online CSS compressor and optimizer](#) based on csstidy. If you want to create a linear or radial gradient as background or border, check our [CSS Gradient Generator](#).

Hey! You found this booklet interesting? Support Converting Colors with the new Membership Option!

The pro membership hides all ads, plus gives you double the colors in the color bucket, and more awesome pro features!

[Learn more, Memberships starting at \\$2.50/m!](#)

**Follow me
on Twitter!**

@ConvertingColor