

Converting Colors

HunterLab(34.4605, 2.1837,
9.1925)

Have a look what the booklet for
HunterLab(34.4605, 2.1837, 9.1925)
contains.

HunterLab(34.4605, 2.1837, 9.1925)	3
<i>Conversions</i>	4
<i>Details</i>	6
<i>Harmonies</i>	12
<i>Previews</i>	24
<i>Color Blindness Simulation</i>	28
<i>CSS Examples</i>	31

Color

**HunterLab(34.4605, 2.1837,
9.1925)**

Conversions

Conversions Part 1

Format	Color
Hex	715D4D
RGB	113, 93, 77
RGB Percent	44%, 36%, 30%
CMY	0.5569, 0.6353, 0.6980
CMYK	0.00, 0.18, 0.32, 0.56
HSL	27°, 19%, 37%
HSV	27°, 32%, 44%
XYZ	12.0640, 11.8753, 8.6775
YIQ	97.1560, 17.0560, -0.7360

Conversions

Conversions Part 2

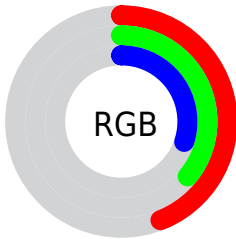
Format	Color
RYB	113, 106, 77
Decimal	7429453
CIELab	41.02, 5.51, 12.24
CIElCh	41, 13.422, 65.752
Yxy	11.8758, 0.3699, 0.3641
Android (android.graphics.Color)	4285619533 (0xFF715D4D)
YUV	97.1560, -9.9369, 13.8952
Hunter-Lab	34.4605, 2.1837, 9.1925

Details

The HunterLab color $[34.4605, 2.1837, 9.1925]$ is a dark color, and the websafe version is hex 666666 . A complement of this color would be $[33.6439, -4.1456, -6.8732]$, and the grayscale version is $[34.6648, -1.8496, 1.8834]$.

A 20% lighter version of the original color is $[53.9913, 1.7402, 11.6238]$, and $[17.9801, 2.3424, 6.3756]$ is the 20% darker color. If you saturate the color by 10%, you get $[32.6691, 3.8647, 10.9276]$, and if you desaturate by 10%, it is $[36.3279, 0.6588, 7.2215]$.

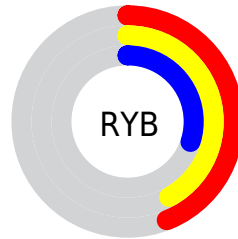
Distribution



 Red (44%)

 Green (36%)

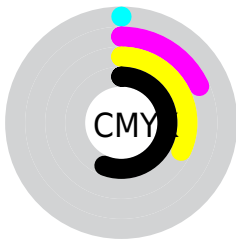
 Blue (30%)



 Red (44%)

 Yellow (42%)

 Blue (30%)

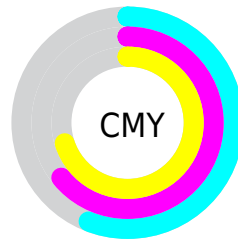


 Cyan (0%)

 Magenta (18%)

 Yellow (32%)

 Black (56%)



 Cyan (56%)

 Magenta (64%)

 Yellow (70%)

Brightness & Saturation Gradients

These gradients show how the HunterLab color 34.4605, 2.1837, 9.1925 changes by changing the brightness by 10 percent. The first figure shows a shift by +10% for each color and the second figure -10%.

Similar to the brightness gradients but the following saturation gradients show a change of the HunterLab color 34.4605, 2.1837, 9.1925 by changing the saturation by 10% instead.

■ 34.4605, 2.1837,
9.1925

■ 34.4605, 2.1837,
9.1925

142.6819, -1.2484,
20.4743

■ 25.8054, 2.2923,
7.8678

■ 54.1006, 1.7592,
11.7386

■ 18.0274, 2.3179,
6.4743

■ 64.9721, 1.4617,
12.9863

■ 11.2407, 2.2380,
5.3762

■ 76.4877, 1.1145,
14.2278

■ 3.3572, 6.9758,
2.3500

■ 88.6132, 0.7216,
15.4680

0.0000, NaN, NaN

0.0000, NaN, NaN

■ 101.3193, 0.2863,
16.7104

0.0000, NaN, NaN

114.5806, -0.1886,

0.0000, NaN, NaN

17.9577

0.0000, NaN, NaN

128.3748, -0.7008,
19.2119

■ 34.4605, 2.1837,
9.1925

■ 34.4605, 2.1837,
9.1925

■ 32.6691, 3.8647,
10.9276

■ 36.3279, 0.6588,
7.2215

■ 30.9583, 5.7129,
12.3975

■ 38.2624, -0.7161,
5.0387

■ 29.3367, 7.7308,
13.5738

■ 40.2592, -1.9529,
2.6674

■ 27.8127, 9.9161,
14.4288

■ 42.3130, -3.0624,
0.1280

■ 26.3949, 12.2574,
14.9393

■ 44.4195, -4.0553,
-2.5619

■ 25.0914, 14.7303,
15.0947

■ 46.5744, -4.9418,
-5.3870

■ 24.1074, 16.7550,
15.1482

■ 48.7743, -5.7313,
-8.3340

■ 51.0161, -6.4324,
-11.3915

■ 53.2969, -7.0531,
-14.5496

Harmonies

Analogous

The Analogous color harmony consists of three colors that are next to each other on the color wheel.



34.4613, 6.2832, 6.7866



34.4605, 2.1837, 9.1925



34.4613, -2.7954, 9.7666

Triad

The Triadic color harmony groups three colors that are evenly spaced from another and form a triangle on the color wheel.



34.4613, 2.1825, 9.1930



34.4613, -10.8632, 0.9501



34.4613, 3.9368, -6.3693

Complementary

The Complementary color scheme is a pair of colors which are on the opposite of each other on the color wheel.



34.4605, 2.1837, 9.1925



33.6439, -4.1456, -6.8732

Split Complementary

Split-complementary colors differ from the complementary color scheme. The scheme consists of three colors, the original color and two neighbors of the complement color.



34.4613, -0.8754, -8.4783



34.4605, 2.1837, 9.1925



34.4613, -9.2753, -3.8844

Square

The Square scheme is like the rectangle color scheme, but the four colors are evenly spaced on the color wheel.



34.4613, 2.1825, 9.1930



34.4613, -10.1471, 5.4124



34.4613, -5.6872, -7.5100



34.4613, 7.3357, -2.0804

Rectangle

The Rectangle color scheme consists of four colors that form a rectangle on the color wheel.



34.4605, 2.1837, 9.1925



34.4613, -5.9046, 9.1154



34.4613, -5.6872, -7.5100



34.4613, 2.4208, -7.3824

Sweetspot

The Sweet Spot groups the original color and five complimentary colors.



34.4613, 2.1825, 9.1930



51.6208, -1.2334, 6.2541



31.1274, 12.2789, -2.3328



24.6884, -0.5043, 3.1662



76.6170, -4.0881, 4.1627



26.1505, -1.3953, 1.4208

Same Dimension

The Same Dimension uses a secret algorithm to generate beautiful new colors.



34.4613, 2.1825, 9.1930



44.3872, 4.5098, 13.9977



39.1515, -5.6409, 13.3933



19.0339, -0.5314, 2.1460



25.6002, 18.0272, 16.0903



55.6587, 43.8735, 35.0647

Inverse Universe

The Inverse Universe completely reimagines the original color for something new.



33.6439, -4.1456, -6.8732



43.0583, -5.7334, -12.0894



29.0173, 3.7606, -13.9754



18.9182, -1.4336, -0.1336



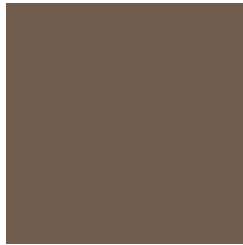
23.0573, 1.1681, -31.3413



49.7416, 5.6989, -74.4749

Previews

White Background



This preview shows how the HunterLab color 34.4605, 2.1837, 9.1925 looks on a white background.

Color Contrast Check

Large Text (above 18pt) WCAG AA ✓ Pass

Any Text WCAG AA ✓ Pass

Large Text (above 18pt) WCAG AAA ✓ Pass

Any Text WCAG AAA × Fail

Black Background



This preview shows how the HunterLab color 34.4605, 2.1837, 9.1925 looks on a black background.

Color Contrast Check

Large Text (above 18pt) WCAG AA ✓ Pass

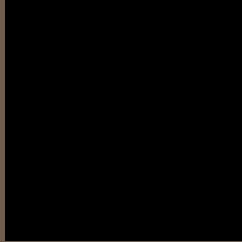
Any Text WCAG AA × Fail

Large Text (above 18pt) WCAG AAA × Fail

Any Text WCAG AAA × Fail

If you want to check with other color combinations, try the [Color Contrast Checker](#).

HunterLab 34.4605, 2.1837, 9.1925 Background



This preview shows how black text looks on a background with the HunterLab color 34.4605, 2.1837, 9.1925.



This preview shows how white text looks on a background with the HunterLab color 34.4605, 2.1837,

Color Blindness Simulation

Color vision deficiency is a very complex topic, and I could not describe the different causes any better than Wikipedia does, so if you want to learn more, you should check out their [article about color blindness](#).

Dichromacy



Original Color

34.4605, 2.1837, 9.1925

Protanopia

34.6374, -2.4877, 8.6379

Deuteranopia

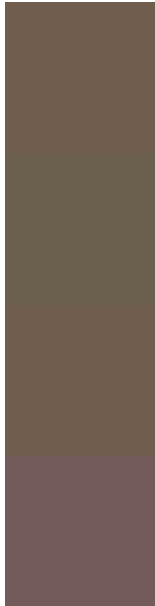
34.4605, 2.1837, 9.1925



Tritanopia

34.3806, 6.7266, 1.7999

Trichromacy



Original Color

34.4605, 2.1837, 9.1925

Protanomaly

34.7010, -0.9468, 9.0509

Deuteranomaly

34.4605, 2.1837, 9.1925

Tritanomaly

34.3479, 4.9866, 4.5554

Monochromacy



Original Color

34.4605, 2.1837, 9.1925

Achromatopsia

34.5743, -1.8448, 1.8785

Achromatomaly

34.6230, -0.6733, 4.7585

CSS Examples

Text

The CSS property to change the color of the text to HunterLab 34.4605, 2.1837, 9.1925 is called "color". The color property can be set on classes, ids or directly on the HTML element.

This example shows how text in the color `rgb(113, 93, 77)` looks like.

```
.text, #text, p{  
    color:rgb(113, 93, 77)  
}
```

If you want to add a text shadow in that color use the text-shadow property, you can generate a text shadow directly with our [CSS Text Shadow Generator](#).

Here you see how black text with a 4 pixel rgb(113, 93, 77) colored shadow looks like.

```
.shadow{ text-shadow: 4px 4px 2px rgb(113, 93, 77) }
```

Border

The CSS property to change the border of an element to HunterLab 34.4605, 2.1837, 9.1925 is called "border". The border property can be set on classes, ids or directly on the HTML element.

This example shows the color as border, it can be applied via the CSS property "border" or "border-color".

```
.border, #border, table{ border:4px solid rgb(113, 93, 77) }
```


If only the border color should be changed use the property `border-color`.

```
.border{ border-color:rgb(113, 93, 77) }
```

If you want to add a box shadow in that color use:

Here you see how a box with a 4 pixel `rgb(113, 93, 77)` colored shadow looks like.

```
.boxshadow{ -moz-box-shadow:4px 4px 4px  
4px rgb(113, 93, 77); -webkit-box-  
shadow:4px 4px 4px 4px rgb(113, 93, 77);  
box-shadow:4px 4px 4px 4px rgb(113, 93,  
77) }
```

Background

The CSS property to change the background color of an element to HunterLab 34.4605, 2.1837, 9.1925 is called "background". The background property can be set on classes, ids or directly on the HTML element.

```
.background, #background, body{  
background: rgb(113, 93, 77) }
```

If only the background color should be changed can be used:

```
.background{ background-color: rgb(113, 93,  
77) }
```

This example shows the color as background, it is applied via the CSS property "background".

To optimize and compress your CSS code, you can use our [online CSS compressor and optimizer](#) based on csstidy. If you want to create a linear or radial gradient as background or border, check our [CSS Gradient Generator](#).

Hey! You found this booklet interesting? Support Converting Colors with the new Membership Option!

The pro membership hides all ads, plus gives you double the colors in the color bucket, and more awesome pro features!

[Learn more, Memberships starting at \\$2.50/m!](#)

**Follow me
on Twitter!**

@ConvertingColor