

Converting Colors

HunterLab(34.7572, 1.9539,
8.8317)

Have a look what the booklet for
HunterLab(34.7572, 1.9539, 8.8317)
contains.

HunterLab(34.7572, 1.9530, 8.8331)	3
<i>Conversions</i>	4
<i>Details</i>	6
<i>Harmonies</i>	12
<i>Previews</i>	24
<i>Color Blindness Simulation</i>	28
<i>CSS Examples</i>	31

Color

**HunterLab(34.7572, 1.9530,
8.8331)**

Conversions

Conversions Part 1

Format	Color
Hex	715E4F
RGB	113, 94, 79
RGB Percent	44%, 37%, 31%
CMY	0.5569, 0.6314, 0.6902
CMYK	0.00, 0.17, 0.30, 0.56
HSL	26°, 18%, 38%
HSV	26°, 30%, 44%
XYZ	12.2240, 12.0806, 9.0847
YIQ	97.9710, 16.1390, -0.6370

Conversions

Conversions Part 2

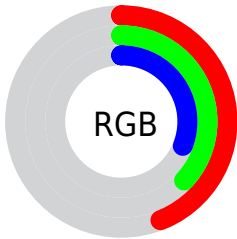
Format	Color
R_{YB}	113, 106, 79
Decimal	7429711
CIE Lab	41.34, 5.21, 11.48
CIE LCh	41, 12.603, 65.582
Yxy	12.0812, 0.3661, 0.3618
Android (android.graphics.Color)	4285619791 (0xFF715E4F)
YUV	97.9710, -9.3527, 13.1804
Hunter-Lab	34.7572, 1.9530, 8.8331

Details

The HunterLab color **34.7572, 1.9530, 8.8331** is a dark color, and the websafe version is hex **666666**. A complement of this color would be **34.0434, -4.1404, -6.3037**, and the grayscale version is **34.9678, -1.8658, 1.8999**.

A 20% lighter version of the original color is **54.3179, 1.5141, 11.2055**, and **18.2352, 2.1010, 6.1032** is the 20% darker color. If you saturate the color by 10%, you get **32.9438, 3.6220, 10.6067**, and if you desaturate by 10%, it is **36.6460, 0.4385, 6.8301**.

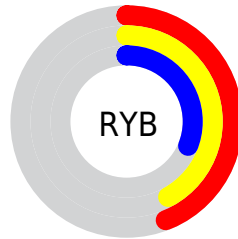
Distribution



Red (44%)

Green (37%)

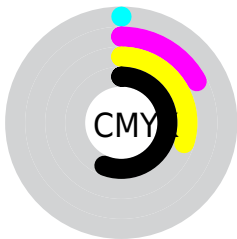
Blue (31%)



Red (44%)

Yellow (42%)

Blue (31%)

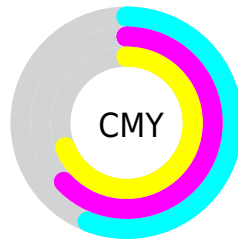


Cyan (0%)

Magenta (17%)

Yellow (30%)

Black (56%)



Cyan (56%)

Magenta (63%)

Yellow (69%)

Brightness & Saturation Gradients

These gradients show how the HunterLab color 34.7572, 1.9530, 8.8331 changes by changing the brightness by 10 percent. The first figure shows a shift by +10% for each color and the second figure -10%.

Similar to the brightness gradients but the following saturation gradients show a change of the HunterLab color 34.7572, 1.9530, 8.8331 by changing the saturation by 10% instead.

■ 34.7572, 1.9530,
8.8331

■ 34.7572, 1.9530,
8.8331

143.1580, -1.6195,
19.7598

■ 26.0749, 2.0829,
7.5676

■ 54.4453, 1.4909,
11.2794

■ 18.2667, 2.1321,
6.2426

■ 65.3385, 1.1765,
12.4834

■ 11.4453, 2.0793,
5.0839

■ 76.8745, 0.8132,
13.6844

■ 3.8586, 5.6778,
2.7010

■ 89.0194, 0.4051,
14.8866

0.0000, NaN, NaN

0.0000, NaN, NaN

■ 101.7441, -0.0447,
16.0933

0.0000, NaN, NaN

115.0231, -0.5335,

0.0000, NaN, NaN

17.3066

0.0000, NaN, NaN

128.8343, -1.0591,
18.5284

■ 34.7572, 1.9530,
8.8331

■ 34.7572, 1.9530,
8.8331

■ 32.9438, 3.6220,
10.6067

■ 36.6460, 0.4385,
6.8301

■ 31.2105, 5.4570,
12.1218

■ 38.6014, -0.9278,
4.6212

■ 29.5659, 7.4614,
13.3500

■ 40.6186, -2.1580,
2.2296

■ 28.0184, 9.6339,
14.2628

■ 42.6923, -3.2630,
-0.3252

■ 26.5766, 11.9645,
14.8354

■ 44.8182, -4.2535,
-3.0259

■ 25.2494, 14.4311,
15.0533

■ 46.9923, -5.1394,
-5.8578

■ 24.0418, 16.9133,
15.1105

■ 49.2111, -5.9302,
-8.8080

■ 51.4714, -6.6343,
-11.8654

■ 53.7704, -7.2595,
-15.0204

Harmonies

Analogous

The Analogous color harmony consists of three colors that are next to each other on the color wheel.



34.7580, 5.7883, 6.5237



34.7572, 1.9530, 8.8331



34.7580, -2.7295, 9.3946

Triad

The Triadic color harmony groups three colors that are evenly spaced from another and form a triangle on the color wheel.



34.7580, 1.9518, 8.8336



34.7580, -10.3864, 1.0470



34.7580, 3.5495, -5.8354

Complementary

The Complementary color scheme is a pair of colors which are on the opposite of each other on the color wheel.



34.7572, 1.9530, 8.8331



34.0434, -4.1404, -6.3037

Split Complementary

Split-complementary colors differ from the complementary color scheme. The scheme consists of three colors, the original color and two neighbors of the complement color.



34.7580, -0.9747, -7.7777



34.7572, 1.9530, 8.8331



34.7580, -8.8928, -3.4805

Square

The Square scheme is like the rectangle color scheme, but the four colors are evenly spaced on the color wheel.



34.7580, 1.9518, 8.8336



34.7580, -9.6947, 5.2557



34.7580, -5.5075, -6.8635



34.7580, 6.7445, -1.8456

Rectangle

The Rectangle color scheme consists of four colors that form a rectangle on the color wheel.



34.7572, 1.9530, 8.8331



34.7580, -5.6664, 8.7760



34.7580, -5.5075, -6.8635



34.7580, 2.1250, -6.7719

Sweetspot

The Sweet Spot groups the original color and five complimentary colors.



34.7580, 1.9518, 8.8336



51.8805, -1.3879, 5.9220



31.6065, 11.4619, -2.1241



24.8017, -0.5715, 3.0192



76.6170, -4.0881, 4.1627



26.1505, -1.3953, 1.4208

Same Dimension

The Same Dimension uses a secret algorithm to generate beautiful new colors.



34.7580, 1.9518, 8.8336



44.8316, 4.1251, 13.4874



39.2251, -5.4953, 12.8928



19.0295, -0.5240, 2.1412



25.5303, 18.1965, 16.0502



55.5028, 44.2646, 34.9755

Inverse Universe

The Inverse Universe completely reimagines the original color for something new.



34.0434, -4.1404, -6.3037



43.6655, -5.7772, -11.1803



29.6298, 3.3760, -12.9448



18.9226, -1.4409, -0.1282



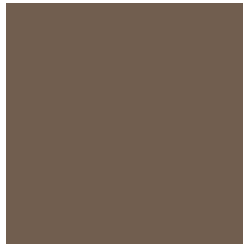
23.1576, 0.9915, -31.0853



49.9736, 5.2755, -73.8510

Previews

White Background



This preview shows how the HunterLab color 34.7572, 1.9530, 8.8331 looks on a white background.

Color Contrast Check

Large Text (above 18pt) WCAG AA ✓ Pass

Any Text WCAG AA ✓ Pass

Large Text (above 18pt) WCAG AAA ✓ Pass

Any Text WCAG AAA × Fail

Black Background



This preview shows how the HunterLab color 34.7572, 1.9530, 8.8331 looks on a black background.

Color Contrast Check

Large Text (above 18pt) WCAG AA ✓ Pass

Any Text WCAG AA × Fail

Large Text (above 18pt) WCAG AAA × Fail

Any Text WCAG AAA × Fail

If you want to check with other color combinations, try the [Color Contrast Checker](#).

HunterLab 34.7572, 1.9530, 8.8331 Background



This preview shows how black text looks on a background with the HunterLab color 34.7572, 1.9530, 8.8331.



This preview shows how white text looks on a background with the HunterLab color 34.7572, 1.9530,

Color Blindness Simulation

Color vision deficiency is a very complex topic, and I could not describe the different causes any better than Wikipedia does, so if you want to learn more, you should check out their [article about color blindness](#).

Dichromacy



Original Color

34.7572, 1.9530, 8.8331

Protanopia

34.6800, -2.2534, 8.0215

Deuteranopia

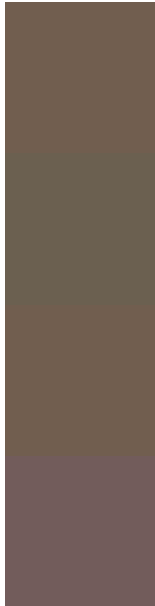
34.7572, 1.9530, 8.8331



Tritanopia

34.6538, 6.4003, 1.6954

Trichromacy



Original Color

34.7572, 1.9530, 8.8331

Protanomaly

34.7430, -0.7183, 8.4443

Deuteranomaly

34.7572, 1.9530, 8.8331

Tritanomaly

34.6223, 4.6551, 4.4663

Monochromacy



Original Color

34.7572, 1.9530, 8.8331

Achromatopsia

34.9484, -1.8648, 1.8988

Achromatomaly

34.9117, -0.9856, 4.6864

CSS Examples

Text

The CSS property to change the color of the text to HunterLab 34.7572, 1.9530, 8.8331 is called "color". The color property can be set on classes, ids or directly on the HTML element.

This example shows how text in the color `rgb(113, 94, 79)` looks like.

```
.text, #text, p{  
    color:rgb(113, 94, 79)  
}
```

If you want to add a text shadow in that color use the text-shadow property, you can generate a text shadow directly with our [CSS Text Shadow Generator](#).

Here you see how black text with a 4 pixel rgb(113, 94, 79) colored shadow looks like.

```
.shadow{ text-shadow: 4px 4px 2px rgb(113, 94, 79) }
```

Border

The CSS property to change the border of an element to HunterLab 34.7572, 1.9530, 8.8331 is called "border". The border property can be set on classes, ids or directly on the HTML element.

This example shows the color as border, it can be applied via the CSS property "border" or "border-color".

```
.border, #border, table{ border:4px solid rgb(113, 94, 79) }
```


If only the border color should be changed use the property border-color.

```
.border{ border-color:rgb(113, 94, 79) }
```

If you want to add a box shadow in that color use:

Here you see how a box with a 4 pixel rgb(113, 94, 79) colored shadow looks like.

```
.boxshadow{ -moz-box-shadow:4px 4px 4px  
4px rgb(113, 94, 79); -webkit-box-  
shadow:4px 4px 4px 4px rgb(113, 94, 79);  
box-shadow:4px 4px 4px 4px rgb(113, 94,  
79) }
```

Background

The CSS property to change the background color of an element to HunterLab 34.7572, 1.9530, 8.8331 is called "background". The background property can be set on classes, ids or directly on the HTML element.

```
.background, #background, body{  
background: rgb(113, 94, 79) }
```

If only the background color should be changed can be used:

```
.background{ background-color: rgb(113, 94,  
79) }
```

This example shows the color as background, it is applied via the CSS property "background".

To optimize and compress your CSS code, you can use our [online CSS compressor and optimizer](#) based on csstidy. If you want to create a linear or radial gradient as background or border, check our [CSS Gradient Generator](#).

Hey! You found this booklet interesting? Support Converting Colors with the new Membership Option!

The pro membership hides all ads, plus gives you double the colors in the color bucket, and more awesome pro features!

[Learn more, Memberships starting at \\$2.50/m!](#)

**Follow me
on Twitter!**

@ConvertingColor