

Converting Colors

HunterLab(36.2169, 1.1917,
10.1529)

Have a look what the booklet for
HunterLab(36.2169, 1.1917,
10.1529) contains.

HunterLab(36.1688, 1.4302, 10.1862)	3
<i>Conversions</i>	4
<i>Details</i>	6
<i>Harmonies</i>	12
<i>Previews</i>	24
<i>Color Blindness Simulation</i>	28
<i>CSS Examples</i>	31

Color

**HunterLab(36.1688, 1.4302,
10.1862)**

Conversions

Conversions Part 1

Format	Color
Hex	75624F
RGB	117, 98, 79
RGB Percent	46%, 38%, 31%
CMY	0.5412, 0.6157, 0.6902
CMYK	0.00, 0.16, 0.32, 0.54
HSL	30°, 19%, 38%
HSV	30°, 32%, 46%
XYZ	13.1151, 13.0818, 9.2310
YIQ	101.5150, 17.4230, -1.8810

Conversions

Conversions Part 2

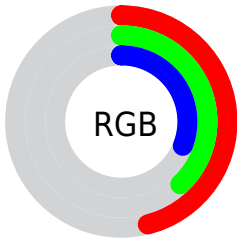
Format	Color
R_{YB}	117, 117, 79
Decimal	7692879
CIE Lab	42.89, 4.55, 13.67
CIE LCh	43, 14.406, 71.582
Yxy	13.0824, 0.3702, 0.3693
Android (android.graphics.Color)	4285882959 (0xFF75624F)
YUV	101.5150, -11.0999, 13.5803
Hunter-Lab	36.1688, 1.4302, 10.1862

Details

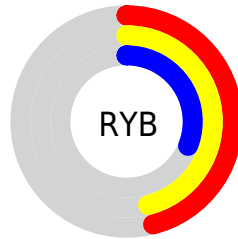
The HunterLab color **36.1688, 1.4302, 10.1862** is a dark color, and the websafe version is hex **666666**. A complement of this color would be **34.1784, -3.3930, -8.1936**, and the grayscale version is **36.3049, -1.9371, 1.9725**.

A 20% lighter version of the original color is **56.2134, 0.7667, 13.1121**, and **19.4947, 1.5998, 7.4378** is the 20% darker color. If you saturate the color by 10%, you get **34.4555, 2.9001, 12.0628**, and if you desaturate by 10%, it is **37.9514, 0.1243, 8.0305**.

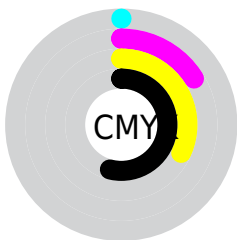
Distribution



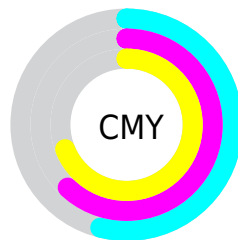
- Red (46%)
- Green (38%)
- Blue (31%)



- Red (46%)
- Yellow (46%)
- Blue (31%)



- Cyan (0%)
- Magenta (16%)
- Yellow (32%)
- Black (54%)



- Cyan (54%)
- Magenta (62%)
- Yellow (69%)

Brightness & Saturation Gradients

These gradients show how the HunterLab color 36.1688, 1.4302, 10.1862 changes by changing the brightness by 10 percent. The first figure shows a shift by +10% for each color and the second figure -10%.

Similar to the brightness gradients but the following saturation gradients show a change of the HunterLab color 36.1688, 1.4302, 10.1862 by changing the saturation by 10% instead.

■ 36.1688, 1.4302,
10.1862

■ 36.1688, 1.4302,
10.1862

145.4116, -2.4801,
22.1261

■ 27.3593, 1.6120,
8.7637

■ 56.0819, 0.8769,
12.9076

■ 19.4099, 1.7195,
7.2639

■ 67.0767, 0.5216,
14.2348

■ 12.4271, 1.7340,
5.8468

■ 78.7087, 0.1199,
15.5514

■ 5.6536, 3.2062,
3.9575

■ 90.9449, -0.3248,
16.8631

0.0000, NaN, NaN

0.0000, NaN, NaN

■ 103.7566, -0.8093,
18.1737

0.0000, NaN, NaN

117.1191, -1.3314,

0.0000, NaN, NaN

19.4863

0.0000, NaN, NaN

131.0105, -1.8889,
20.8032

■ 36.1688, 1.4302,
10.1862

■ 36.1688, 1.4302,
10.1862

■ 34.4555, 2.9001,
12.0628

■ 37.9514, 0.1243,
8.0305

■ 32.8145, 4.5455,
13.6318

■ 39.7955, -1.0232,
5.6199

■ 31.2527, 6.3698,
14.8672

■ 41.6972, -2.0239,
2.9789

■ 29.7762, 8.3726,
15.7450

■ 43.6524, -2.8885,
0.1295

■ 28.3913, 10.5467,
16.2478

■ 45.6571, -3.6273,
-2.9089

■ 27.1036, 12.8738,
16.3736

■ 47.7078, -4.2503,
-6.1186

■ 26.1907, 14.6525,
16.3951

■ 49.8013, -4.7668,
-9.4843

■ 51.9349, -5.1854,
-12.9922

■ 54.1061, -5.5143,
-16.6304

Harmonies

Analogous

The Analogous color harmony consists of three colors that are next to each other on the color wheel.



36.1696, 6.2204, 7.9639



36.1688, 1.4302, 10.1862



36.1696, -4.0059, 10.4152

Triad

The Triadic color harmony groups three colors that are evenly spaced from another and form a triangle on the color wheel.



36.1696, 1.4289, 10.1867



36.1696, -11.6093, -0.0842



36.1696, 5.2674, -6.2831

Complementary

The Complementary color scheme is a pair of colors which are on the opposite of each other on the color wheel.



36.1688, 1.4302, 10.1862



34.1784, -3.3930, -8.1936

Split Complementary

Split-complementary colors differ from the complementary color scheme. The scheme consists of three colors, the original color and two neighbors of the complement color.



36.1696, 0.1900, -9.1847



36.1688, 1.4302, 10.1862



36.1696, -9.4205, -5.2688

Square

The Square scheme is like the rectangle color scheme, but the four colors are evenly spaced on the color wheel.



36.1696, 1.4289, 10.1867



36.1696, -11.3212, 4.9705



36.1696, -5.1742, -8.7882



36.1696, 8.5251, -1.3144

Rectangle

The Rectangle color scheme consists of four colors that form a rectangle on the color wheel.



36.1688, 1.4302, 10.1862



36.1696, -7.2430, 9.4540



36.1696, -5.1742, -8.7882



36.1696, 3.7047, -7.5634

Sweetspot

The Sweet Spot groups the original color and five complimentary colors.



36.1696, 1.4289, 10.1867



53.8116, -1.6829, 6.7616



32.0248, 12.7196, -1.4372



25.6697, -0.7331, 3.4231



77.7063, -4.1462, 4.2219



27.0627, -1.4440, 1.4704

Same Dimension

The Same Dimension uses a secret algorithm to generate beautiful new colors.



36.1696, 1.4289, 10.1867



46.6652, 3.3732, 15.5587



41.3147, -7.0234, 14.7192



19.9381, -0.6820, 2.3349



27.4347, 15.5089, 17.1766



59.1308, 37.5502, 37.0935

Inverse Universe

The Inverse Universe completely reimagines the original color for something new.



34.1784, -3.3930, -8.1936



43.4168, -4.4410, -14.4796



29.2212, 5.2542, -16.0495



19.6576, -1.3681, -0.2477



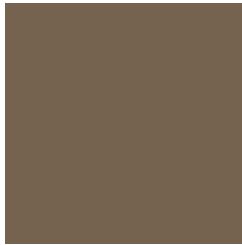
21.8473, 4.3893, -36.7825



46.4177, 13.2331, -86.5845

Previews

White Background



This preview shows how the HunterLab color 36.1688, 1.4302, 10.1862 looks on a white background.

Color Contrast Check

Large Text (above 18pt) WCAG AA ✓ Pass

Any Text WCAG AA ✓ Pass

Large Text (above 18pt) WCAG AAA ✓ Pass

Any Text WCAG AAA × Fail

Black Background



This preview shows how the HunterLab color 36.1688, 1.4302, 10.1862 looks on a black background.

Color Contrast Check

Large Text (above 18pt) WCAG AA ✓ Pass

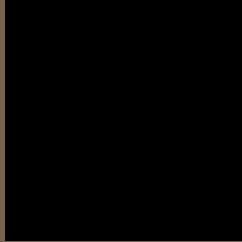
Any Text WCAG AA × Fail

Large Text (above 18pt) WCAG AAA × Fail

Any Text WCAG AAA × Fail

If you want to check with other color combinations, try the [Color Contrast Checker](#).

HunterLab 36.1688, 1.4302, 10.1862 Background



This preview shows how black text looks on a background with the HunterLab color 36.1688, 1.4302, 10.1862.



This preview shows how white text looks on a background with the HunterLab color 36.1688, 1.4302, 10.1862.

Color Blindness Simulation

Color vision deficiency is a very complex topic, and I could not describe the different causes any better than Wikipedia does, so if you want to learn more, you should check out their [article about color blindness](#).

Dichromacy



Original Color

36.1688, 1.4302, 10.1862

Protanopia

36.1589, -2.6279, 9.7906

Deuteranopia

36.1052, 2.5386, 10.1451



Tritanopia

36.2447, 6.6830, 1.8879

Trichromacy



Original Color

36.1688, 1.4302, 10.1862

Protanomaly

36.1567, -1.2639, 9.8122

Deuteranomaly

36.0076, 2.2108, 10.0463

Tritanomaly

36.1882, 4.7942, 5.0330

Monochromacy



Original Color

36.1688, 1.4302, 10.1862

Achromatopsia

36.4511, -1.9449, 1.9805

Achromatomaly

36.3886, -1.1980, 5.1472

CSS Examples

Text

The CSS property to change the color of the text to HunterLab 36.1688, 1.4302, 10.1862 is called "color". The color property can be set on classes, ids or directly on the HTML element.

This example shows how text in the color `rgb(117, 98, 79)` looks like.

```
.text, #text, p{  
    color:rgb(117, 98, 79)  
}
```

If you want to add a text shadow in that color use the text-shadow property, you can generate a text shadow directly with our [CSS Text Shadow Generator](#).

Here you see how black text with a 4 pixel rgb(117, 98, 79) colored shadow looks like.

```
.shadow{ text-shadow: 4px 4px 2px rgb(117, 98, 79) }
```

Border

The CSS property to change the border of an element to HunterLab 36.1688, 1.4302, 10.1862 is called "border". The border property can be set on classes, ids or directly on the HTML element.

This example shows the color as border, it can be applied via the CSS property "border" or "border-color".

```
.border, #border, table{ border:4px solid rgb(117, 98, 79) }
```


If only the border color should be changed use the property `border-color`.

```
.border{ border-color:rgb(117, 98, 79) }
```

If you want to add a box shadow in that color use:

Here you see how a box with a 4 pixel `rgb(117, 98, 79)` colored shadow looks like.

```
.boxshadow{ -moz-box-shadow:4px 4px 4px  
4px rgb(117, 98, 79); -webkit-box-  
shadow:4px 4px 4px 4px rgb(117, 98, 79);  
box-shadow:4px 4px 4px 4px rgb(117, 98,  
79) }
```

Background

The CSS property to change the background color of an element to HunterLab 36.1688, 1.4302, 10.1862 is called "background". The background property can be set on classes, ids or directly on the HTML element.

```
.background, #background, body{  
background: rgb(117, 98, 79) }
```

If only the background color should be changed can be used:

```
.background{ background-color: rgb(117, 98,  
79) }
```

This example shows the color as background, it is applied via the CSS property "background".

To optimize and compress your CSS code, you can use our [online CSS compressor and optimizer](#) based on csstidy. If you want to create a linear or radial gradient as background or border, check our [CSS Gradient Generator](#).

Hey! You found this booklet interesting? Support Converting Colors with the new Membership Option!

The pro membership hides all ads, plus gives you double the colors in the color bucket, and more awesome pro features!

[Learn more, Memberships starting at \\$2.50/m!](#)

**Follow me
on Twitter!**

@ConvertingColor