

Converting Colors

HunterLab(36.2516, 1.8761,
8.9865)

Have a look what the booklet for
HunterLab(36.2516, 1.8761, 8.9865)
contains.

HunterLab(36.2516, 1.8761, 8.9865)	3
<i>Conversions</i>	4
<i>Details</i>	6
<i>Harmonies</i>	12
<i>Previews</i>	24
<i>Color Blindness Simulation</i>	28
<i>CSS Examples</i>	31

Color

**HunterLab(36.2516, 1.8761,
8.9865)**

Conversions

Conversions Part 1

Format	Color
Hex	756253
RGB	117, 98, 83
RGB Percent	46%, 38%, 33%
CMY	0.5412, 0.6157, 0.6745
CMYK	0.00, 0.16, 0.29, 0.54
HSL	26°, 17%, 39%
HSV	26°, 29%, 46%
XYZ	13.2651, 13.1418, 10.0211
YIQ	101.9710, 16.1390, -0.6370

Conversions

Conversions Part 2

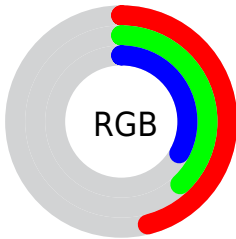
Format	Color
R_{YB}	117, 110, 83
Decimal	7692883
CIE _{Lab}	42.98, 5.15, 11.38
CIE _{LCh}	43, 12.494, 65.678
Yxy	13.1424, 0.3641, 0.3608
Android (android.graphics.Color)	4285882963 (0xFF756253)
YUV	101.9710, -9.3527, 13.1804
Hunter-Lab	36.2516, 1.8761, 8.9865

Details

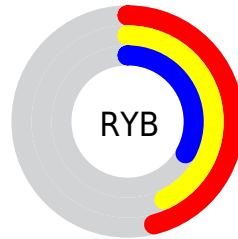
The HunterLab color **36.2516, 1.8761, 8.9865** is a dark color, and the websafe version is hex **666666**. A complement of this color would be **35.5327, -4.2638, -6.2616**, and the grayscale version is **36.4707, -1.9460, 1.9815**.

A 20% lighter version of the original color is **56.3089, 1.2829, 11.7342**, and **19.5573, 1.9337, 6.5258** is the 20% darker color. If you saturate the color by 10%, you get **34.3551, 3.5998, 10.8570**, and if you desaturate by 10%, it is **38.2263, 0.3131, 6.8785**.

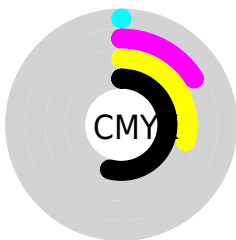
Distribution



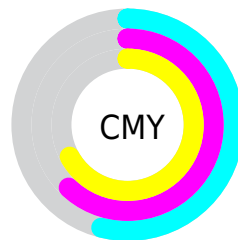
- Red (46%)
- Green (38%)
- Blue (33%)



- Red (46%)
- Yellow (43%)
- Blue (33%)



- Cyan (0%)
- Magenta (16%)
- Yellow (29%)
- Black (54%)



- Cyan (54%)
- Magenta (62%)
- Yellow (67%)

Brightness & Saturation Gradients

These gradients show how the HunterLab color 36.2516, 1.8761, 8.9865 changes by changing the brightness by 10 percent. The first figure shows a shift by +10% for each color and the second figure -10%.

Similar to the brightness gradients but the following saturation gradients show a change of the HunterLab color 36.2516, 1.8761, 8.9865 by changing the saturation by 10% instead.

■ 36.2516, 1.8761,
8.9865

■ 36.2516, 1.8761,
8.9865

■ 145.5432, -1.7897,
19.8705

■ 27.4348, 2.0220,
7.7345

■ 56.1777, 1.3873,
11.4153

■ 19.4772, 2.0900,
6.4293

■ 67.1784, 1.0614,
12.6134

■ 12.4851, 2.0605,
5.0911

■ 78.8160, 0.6875,
13.8095

■ 5.7408, 3.5992,
4.0186

■ 91.0574, 0.2695,
15.0078

0.0000, NaN, NaN

0.0000, NaN, NaN

■ 103.8742, -0.1897,
16.2112

0.0000, NaN, NaN

117.2415, -0.6873,

0.0000, NaN, NaN

17.4217

0.0000, NaN, NaN

131.1377, -1.2213,
18.6411

■ 36.2516, 1.8761,
8.9865

■ 36.2516, 1.8761,
8.9865

■ 34.3551, 3.5998,
10.8570

■ 38.2263, 0.3131,
6.8785

■ 32.5417, 5.4966,
12.4599

■ 40.2700, -1.0961,
4.5578

■ 30.8204, 7.5703,
13.7652

■ 42.3777, -2.3640,
2.0479

■ 29.1999, 9.8201,
14.7430

■ 44.5442, -3.5022,
-0.6305

■ 27.6893, 12.2364,
15.3668

■ 46.7647, -4.5217,
-3.4599

■ 26.2977, 14.7973,
15.6202

■ 49.0352, -5.4331,
-6.4247

■ 25.0238, 17.4181,
15.6496

■ 51.3520, -6.2459,
-9.5119

■ 24.9092, 17.6608,
15.6581

■ 53.7118, -6.9692,
-12.7099

■ 56.1119, -7.6109,
-16.0089

Harmonies

Analogous

The Analogous color harmony consists of three colors that are next to each other on the color wheel.



36.2524, 5.7282, 6.6527



36.2516, 1.8761, 8.9865



36.2524, -2.8291, 9.5508

Triad

The Triadic color harmony groups three colors that are evenly spaced from another and form a triangle on the color wheel.



36.2524, 1.8748, 8.9870



36.2524, -10.5262, 1.1094



36.2524, 3.5058, -5.7568

Complementary

The Complementary color scheme is a pair of colors which are on the opposite of each other on the color wheel.



36.2516, 1.8761, 8.9865



35.5327, -4.2638, -6.2616

Split Complementary

Split-complementary colors differ from the complementary color scheme. The scheme consists of three colors, the original color and two neighbors of the complement color.



36.2524, -1.0347, -7.7034



36.2516, 1.8761, 8.9865



36.2524, -9.0125, -3.4272

Square

The Square scheme is like the rectangle color scheme, but the four colors are evenly spaced on the color wheel.



36.2524, 1.8748, 8.9870



36.2524, -9.8354, 5.3496



36.2524, -5.5962, -6.8007



36.2524, 6.7030, -1.7625

Rectangle

The Rectangle color scheme consists of four colors that form a rectangle on the color wheel.



36.2516, 1.8761, 8.9865



36.2524, -5.7827, 8.9189



36.2524, -5.5962, -6.8007



36.2524, 2.0775, -6.6941

Sweetspot

The Sweet Spot groups the original color and five complimentary colors.



36.2524, 1.8748, 8.9870



53.8401, -1.4357, 6.1551



33.0654, 11.4565, -2.0896



25.6595, -0.5866, 3.1330



77.7063, -4.1462, 4.2219



27.0627, -1.4440, 1.4704

Same Dimension

The Same Dimension uses a secret algorithm to generate beautiful new colors.



36.2524, 1.8748, 8.9870



46.7625, 4.0646, 13.7758



40.7520, -5.6229, 13.1062



19.8549, -0.5418, 2.2443



26.0883, 18.6779, 16.4025



56.1385, 44.8203, 35.3769

Inverse Universe

The Inverse Universe completely reimagines the original color for something new.



35.5327, -4.2638, -6.2616



45.5812, -5.9727, -11.2185



31.0847, 3.3002, -12.8883



19.7423, -1.5071, -0.1451



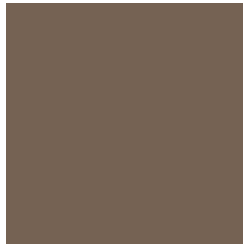
23.6575, 1.0676, -31.8746



50.5417, 5.3692, -74.7633

Previews

White Background



This preview shows how the HunterLab color 36.2516, 1.8761, 8.9865 looks on a white background.

Color Contrast Check

Large Text (above 18pt) WCAG AA ✓ Pass

Any Text WCAG AA ✓ Pass

Large Text (above 18pt) WCAG AAA ✓ Pass

Any Text WCAG AAA × Fail

Black Background



This preview shows how the HunterLab color 36.2516, 1.8761, 8.9865 looks on a black background.

Color Contrast Check

Large Text (above 18pt) WCAG AA ✓ Pass

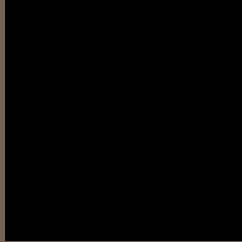
Any Text WCAG AA × Fail

Large Text (above 18pt) WCAG AAA × Fail

Any Text WCAG AAA × Fail

If you want to check with other color combinations, try the [Color Contrast Checker](#).

HunterLab 36.2516, 1.8761, 8.9865 Background



This preview shows how black text looks on a background with the HunterLab color 36.2516, 1.8761, 8.9865.



This preview shows how white text looks on a background with the HunterLab color 36.2516, 1.8761,

Color Blindness Simulation

Color vision deficiency is a very complex topic, and I could not describe the different causes any better than Wikipedia does, so if you want to learn more, you should check out their [article about color blindness](#).

Dichromacy



Original Color

36.2516, 1.8761, 8.9865

Protanopia

36.1788, -2.3466, 8.1677

Deuteranopia

36.3476, 2.1992, 9.0866



Tritanopia

36.1741, 6.5090, 1.3724

Trichromacy



Original Color

36.2516, 1.8761, 8.9865

Protanomaly

36.2408, -0.8051, 8.5953

Deuteranomaly

36.3476, 2.1992, 9.0866

Tritanomaly

36.1411, 4.7399, 4.1985

Monochromacy



Original Color

36.2516, 1.8761, 8.9865

Achromatopsia

36.4511, -1.9449, 1.9805

Achromatomaly

36.4134, -1.0625, 4.7910

CSS Examples

Text

The CSS property to change the color of the text to HunterLab 36.2516, 1.8761, 8.9865 is called "color". The color property can be set on classes, ids or directly on the HTML element.

This example shows how text in the color `rgb(117, 98, 83)` looks like.

```
.text, #text, p{  
    color:rgb(117, 98, 83)  
}
```

If you want to add a text shadow in that color use the text-shadow property, you can generate a text shadow directly with our [CSS Text Shadow Generator](#).

Here you see how black text with a 4 pixel rgb(117, 98, 83) colored shadow looks like.

```
.shadow{ text-shadow: 4px 4px 2px rgb(117, 98, 83) }
```

Border

The CSS property to change the border of an element to HunterLab 36.2516, 1.8761, 8.9865 is called "border". The border property can be set on classes, ids or directly on the HTML element.

This example shows the color as border, it can be applied via the CSS property "border" or "border-color".

```
.border, #border, table{ border:4px solid rgb(117, 98, 83) }
```


If only the border color should be changed use the property border-color.

```
.border{ border-color:rgb(117, 98, 83) }
```

If you want to add a box shadow in that color use:

Here you see how a box with a 4 pixel rgb(117, 98, 83) colored shadow looks like.

```
.boxshadow{ -moz-box-shadow:4px 4px 4px  
4px rgb(117, 98, 83); -webkit-box-  
shadow:4px 4px 4px 4px rgb(117, 98, 83);  
box-shadow:4px 4px 4px 4px rgb(117, 98,  
83) }
```

Background

The CSS property to change the background color of an element to HunterLab 36.2516, 1.8761, 8.9865 is called "background". The background property can be set on classes, ids or directly on the HTML element.

```
.background, #background, body{  
background: rgb(117, 98, 83) }
```

If only the background color should be changed can be used:

```
.background{ background-color: rgb(117, 98,  
83) }
```

This example shows the color as background, it is applied via the CSS property "background".

To optimize and compress your CSS code, you can use our [online CSS compressor and optimizer](#) based on csstidy. If you want to create a linear or radial gradient as background or border, check our [CSS Gradient Generator](#).

Hey! You found this booklet interesting? Support Converting Colors with the new Membership Option!

The pro membership hides all ads, plus gives you double the colors in the color bucket, and more awesome pro features!

[Learn more, Memberships starting at \\$2.50/m!](#)

**Follow me
on Twitter!**

@ConvertingColor