

Converting Colors

HunterLab(36.9772, 33.2785,
9.9062)

Have a look what the booklet for
HunterLab(36.9772, 33.2785,
9.9062) contains.

HunterLab(37.0268, 32.9685, 9.9622)	3
<i>Conversions</i>	4
<i>Details</i>	6
<i>Harmonies</i>	12
<i>Previews</i>	24
<i>Color Blindness Simulation</i>	28
<i>CSS Examples</i>	31

Color

**HunterLab(37.0268, 32.9685,
9.9622)**

Conversions

Conversions Part 1

Format	Color
Hex	A94854
RGB	169, 72, 84
RGB Percent	66%, 28%, 33%
CMY	0.3373, 0.7176, 0.6706
CMYK	0.00, 0.57, 0.50, 0.34
HSL	353°, 40%, 47%
HSV	353°, 57%, 66%
XYZ	20.2798, 13.7098, 9.9649
YIQ	102.3710, 53.9600, 24.2960

Conversions

Conversions Part 2

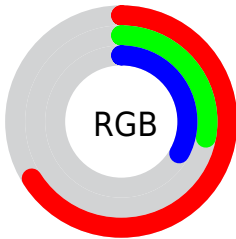
Format	Color
RYB	169, 72, 84
Decimal	11094100
CIELab	43.81, 40.95, 13.00
CIElCh	44, 42.967, 17.609
Yxy	13.7106, 0.4614, 0.3119
Android (android.graphics.Color)	4289284180 (0xFFA94854)
YUV	102.3710, -9.0569, 58.4336
Hunter-Lab	37.0268, 32.9685, 9.9622

Details

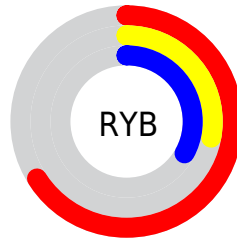
The HunterLab color **37.0268, 32.9685, 9.9622** is a dark color, and the websafe version is hex **993333**. A complement of this color would be **56.7347, -27.0892, 1.1481**, and the grayscale version is **36.6108, -1.9535, 1.9891**.

A 20% lighter version of the original color is **57.0988, 35.8656, 12.7700**, and **20.0595, 29.5401, 7.2044** is the 20% darker color. If you saturate the color by 10%, you get **34.0727, 38.9328, 11.8258**, and if you desaturate by 10%, it is **40.5725, 26.5345, 8.2843**.

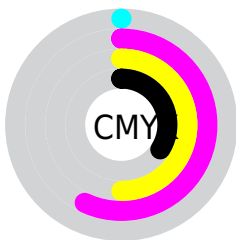
Distribution



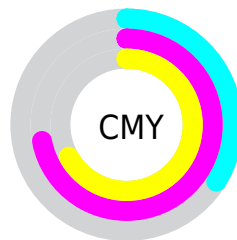
- Red (66%)
- Green (28%)
- Blue (33%)



- Red (66%)
- Yellow (28%)
- Blue (33%)



- Cyan (0%)
- Magenta (57%)
- Yellow (50%)
- Black (34%)



- Cyan (34%)
- Magenta (72%)
- Yellow (67%)

Brightness & Saturation Gradients

These gradients show how the HunterLab color 37.0268, 32.9685, 9.9622 changes by changing the brightness by 10 percent. The first figure shows a shift by +10% for each color and the second figure -10%.

Similar to the brightness gradients but the following saturation gradients show a change of the HunterLab color 37.0268, 32.9685, 9.9622 by changing the saturation by 10% instead.

37.0268, 32.9685,
9.9622

37.0268, 32.9685,
9.9622

146.7729, 42.6065,
21.5864

28.1419, 31.3586,
8.5951

57.0742, 35.8126,
12.5927

20.1086, 29.6422,
7.1608

68.1296, 37.0621,
13.8807

13.0306, 27.8904,
5.6794

79.8190, 38.2064,
15.1613

6.4988, 30.7676,
4.5491

92.1097, 39.2537,
16.4394

0.0000, INF, NaN

0.0000, NaN, NaN

104.9735, 40.2112,
17.7186

0.0000, NaN, NaN

118.3860, 41.0855,

0.0000, NaN, NaN

19.0016

0.0000, NaN, NaN

132.3255, 41.8822,
20.2903

■ 37.0268, 32.9685,
9.9622

■ 37.0268, 32.9685,
9.9622

■ 34.0727, 38.9328,
11.8258

■ 40.5725, 26.5345,
8.2843

■ 31.7873, 43.9714,
13.7596

■ 44.6199, 19.9739,
6.8407

■ 30.2207, 47.5940,
15.5913

■ 49.0896, 13.4829,
5.6393

■ 29.3254, 49.6182,
17.1066

■ 53.9135, 7.1588,
4.6631

■ 29.1355, 50.0799,
17.3961

■ 59.0359, 1.0358,
3.8858

■ 64.4125, -4.8862,
3.2790

■ 70.0079, -10.6236,
2.8168

■ 75.7941, -16.1993,
2.4765

■ 81.7484, -21.6370,
2.2391

Harmonies

Analogous

The Analogous color harmony consists of three colors that are next to each other on the color wheel.



37.0278, 33.9632, -4.9857



37.0268, 32.9685, 9.9622



37.0278, 21.6653, 17.9885

Triad

The Triadic color harmony groups three colors that are evenly spaced from another and form a triangle on the color wheel.



37.0278, 32.9658, 9.9629



37.0278, -22.4367, 17.0303



37.0278, -8.4790, -40.6522

Complementary

The Complementary color scheme is a pair of colors which are on the opposite of each other on the color wheel.



37.0268, 32.9685, 9.9622



56.7347, -27.0892, 1.1481

Split Complementary

Split-complementary colors differ from the complementary color scheme. The scheme consists of three colors, the original color and two neighbors of the complement color.



37.0278, -20.8625, -27.5379



37.0268, 32.9685, 9.9622



37.0278, -27.9319, 7.8705

Square

The Square scheme is like the rectangle color scheme, but the four colors are evenly spaced on the color wheel.



37.0278, 32.9658, 9.9629



37.0278, -11.0085, 20.6813



37.0278, -27.4107, -8.2105



37.0278, 8.0113, -39.2681

Rectangle

The Rectangle color scheme consists of four colors that form a rectangle on the color wheel.



37.0268, 32.9685, 9.9622



37.0278, 10.7618, 20.3653



37.0278, -27.4107, -8.2105



37.0278, -13.1982, -37.6182

Sweetspot

The Sweet Spot groups the original color and five complimentary colors.



37.0278, 32.9658, 9.9629



72.2096, 9.5064, 6.2302



38.1768, 41.6764, -34.0408



33.1236, 5.1790, 3.0141



92.0917, -4.9138, 5.0035



39.3538, -2.0998, 2.1382

Same Dimension

The Same Dimension uses a secret algorithm to generate beautiful new colors.



37.0278, 32.9658, 9.9629



44.6341, 54.1746, 16.5605



44.2014, 14.9209, 19.2728



27.4897, 1.0311, 1.9032



25.1619, 43.2679, 14.8842



3.9810, 6.9564, 1.4959

Inverse Universe

The Inverse Universe completely reimagines the original color for something new.



37.0278, 32.9658, 9.9629



44.6341, 54.1746, 16.5605



45.9750, -9.4772, -20.2432



27.4897, 1.0311, 1.9032



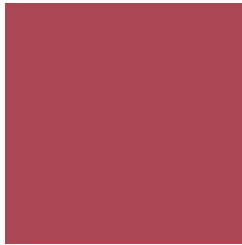
25.1619, 43.2679, 14.8842



3.9810, 6.9564, 1.4959

Previews

White Background



This preview shows how the HunterLab color 37.0268, 32.9685, 9.9622 looks on a white background.

Color Contrast Check

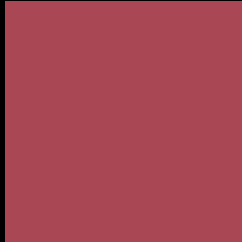
Large Text (above 18pt) WCAG AA ✓ Pass

Any Text WCAG AA ✓ Pass

Large Text (above 18pt) WCAG AAA ✓ Pass

Any Text WCAG AAA × Fail

Black Background



This preview shows how the HunterLab color 37.0268, 32.9685, 9.9622 looks on a black background.

Color Contrast Check

Large Text (above 18pt) WCAG AA ✓ Pass

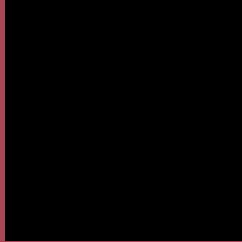
Any Text WCAG AA × Fail

Large Text (above 18pt) WCAG AAA × Fail

Any Text WCAG AAA × Fail

If you want to check with other color combinations, try the [Color Contrast Checker](#).

HunterLab 37.0268, 32.9685, 9.9622 Background



This preview shows how black text looks on a background with the HunterLab color 37.0268, 32.9685, 9.9622.



This preview shows how white text looks on a background with the HunterLab color 37.0268, 32.9685,

Color Blindness Simulation

Color vision deficiency is a very complex topic, and I could not describe the different causes any better than Wikipedia does, so if you want to learn more, you should check out their [article about color blindness](#).

Dichromacy



Original Color

37.0268, 32.9685, 9.9622

Protanopia

37.3451, -1.7164, 3.8404

Deuteranopia

37.1902, 2.2619, 10.8567



Tritanopia

37.0812, 31.9601, 11.8842

Trichromacy



Original Color

37.0268, 32.9685, 9.9622

Protanomaly

36.3432, 10.3346, 5.2995

Deuteranomaly

36.5997, 12.9541, 10.1686

Tritanomaly

37.1205, 32.1392, 11.3140

Monochromacy



Original Color

37.0268, 32.9685, 9.9622

Achromatopsia

36.4511, -1.9449, 1.9805

Achromatomaly

35.6988, 9.5838, 4.1841

CSS Examples

Text

The CSS property to change the color of the text to HunterLab 37.0268, 32.9685, 9.9622 is called "color". The color property can be set on classes, ids or directly on the HTML element.

This example shows how text in the color `rgb(169, 72, 84)` looks like.

```
.text, #text, p{  
    color:rgb(169, 72, 84)  
}
```

If you want to add a text shadow in that color use the text-shadow property, you can generate a text shadow directly with our [CSS Text Shadow Generator](#).

Here you see how black text with a 4 pixel rgb(169, 72, 84) colored shadow looks like.

```
.shadow{ text-shadow: 4px 4px 2px rgb(169, 72, 84) }
```

Border

The CSS property to change the border of an element to HunterLab 37.0268, 32.9685, 9.9622 is called "border". The border property can be set on classes, ids or directly on the HTML element.

This example shows the color as border, it can be applied via the CSS property "border" or "border-color".

```
.border, #border, table{ border:4px solid rgb(169, 72, 84) }
```


If only the border color should be changed use the property border-color.

```
.border{ border-color:rgb(169, 72, 84) }
```

If you want to add a box shadow in that color use:

Here you see how a box with a 4 pixel rgb(169, 72, 84) colored shadow looks like.

```
.boxshadow{ -moz-box-shadow:4px 4px 4px  
4px rgb(169, 72, 84); -webkit-box-  
shadow:4px 4px 4px 4px rgb(169, 72, 84);  
box-shadow:4px 4px 4px 4px rgb(169, 72,  
84) }
```

Background

The CSS property to change the background color of an element to HunterLab 37.0268, 32.9685, 9.9622 is called "background". The background property can be set on classes, ids or directly on the HTML element.

```
.background, #background, body{  
background: rgb(169, 72, 84) }
```

If only the background color should be changed can be used:

```
.background{ background-color: rgb(169, 72,  
84) }
```

This example shows the color as background, it is applied via the CSS property "background".

To optimize and compress your CSS code, you can use our [online CSS compressor and optimizer](#) based on csstidy. If you want to create a linear or radial gradient as background or border, check our [CSS Gradient Generator](#).

Hey! You found this booklet interesting? Support Converting Colors with the new Membership Option!

The pro membership hides all ads, plus gives you double the colors in the color bucket, and more awesome pro features!

[Learn more, Memberships starting at \\$2.50/m!](#)

**Follow me
on Twitter!**

@ConvertingColor