

# Converting Colors

HunterLab(37.3709, 33.8403,  
3.6378)

Have a look what the booklet for  
HunterLab(37.3709, 33.8403,  
3.6378) contains.

<b>HunterLab(37.3362, 33.7082, 3.6347)</b> .....	3
<b><i>Conversions</i></b> .....	4
<b><i>Details</i></b> .....	6
<b><i>Harmonies</i></b> .....	12
<b><i>Previews</i></b> .....	24
<b><i>Color Blindness Simulation</i></b> .....	28
<b><i>CSS Examples</i></b> .....	31

# Color

**HunterLab(37.3362, 33.7082,  
3.6347)**

# Conversions

## Conversions Part 1

<b>Format</b>	<b>Color</b>
Hex	A74966
RGB	167, 73, 102
RGB Percent	65%, 29%, 40%
CMY	0.3451, 0.7137, 0.6000
CMYK	0.00, 0.56, 0.39, 0.35
HSL	341°, 39%, 47%
HSV	341°, 56%, 65%
XYZ	20.7172, 13.9399, 14.1691
YIQ	104.4120, 46.7150, 28.9470

# Conversions

## Conversions Part 2

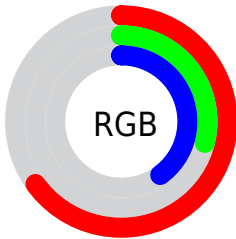
<b>Format</b>	<b>Color</b>
<a href="#">RYB</a>	<a href="#">167, 73, 102</a>
Decimal	<a href="#">10963302</a>
CIELab	<a href="#">44.15, 41.65, 2.35</a>
CIElCh	<a href="#">44, 41.719, 3.232</a>
Yxy	<a href="#">13.9406, 0.4243, 0.2855</a>
Android (android.graphics.Color)	<a href="#">4289153382</a> (0xFFA74966)
YUV	<a href="#">104.4120, -1.1891, 54.8897</a>
Hunter-Lab	<a href="#">37.3362, 33.7082, 3.6347</a>

# Details

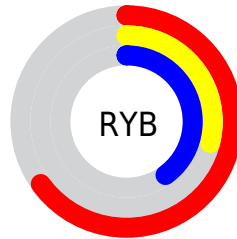
The HunterLab color **37.3362, 33.7082, 3.6347** is a dark color, and the websafe version is hex **993366**. A complement of this color would be **55.5781, -29.3195, 8.0810**, and the grayscale version is **37.3553, -1.9932, 2.0296**.

A 20% lighter version of the original color is **57.4236, 36.7005, 4.9101**, and **20.3005, 30.2276, 2.4818** is the 20% darker color. If you saturate the color by 10%, you get **34.3795, 39.6801, 5.0230**, and if you desaturate by 10%, it is **40.8447, 27.1984, 2.7306**.

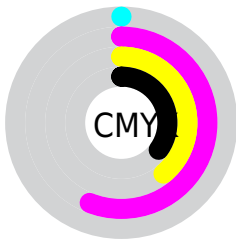
# Distribution



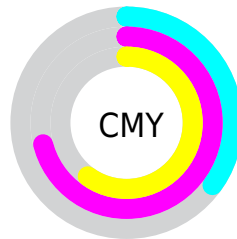
- Red (65%)
- Green (29%)
- Blue (40%)



- Red (65%)
- Yellow (29%)
- Blue (40%)



- Cyan (0%)
- Magenta (56%)
- Yellow (39%)
- Black (35%)



- Cyan (35%)
- Magenta (71%)
- Yellow (60%)

# Brightness & Saturation Gradients

These gradients show how the HunterLab color 37.3362, 33.7082, 3.6347 changes by changing the brightness by 10 percent. The first figure shows a shift by +10% for each color and the second figure -10%.

Similar to the brightness gradients but the following saturation gradients show a change of the HunterLab color 37.3362, 33.7082, 3.6347 by changing the saturation by 10% instead.



37.3362, 33.7082,  
3.6347

37.3362, 33.7082,  
3.6347

147.2621, 43.5455,  
10.5837

28.4243, 32.0777,  
3.0044

57.4314, 36.5972,  
4.9874

20.3612, 30.3428,  
2.4033

68.5086, 37.8694,  
5.7068

13.2493, 28.5772,  
1.8306

80.2185, 39.0364,  
6.4541

6.7762, 30.6379,  
1.8077

92.5286, 40.1062,  
7.2287

0.0000, INF, NaN

0.0000, NaN, NaN

105.4110, 41.0858,  
8.0296

0.0000, NaN, NaN

118.8414, 41.9819,

0.0000, NaN, NaN

132.7981, 42.8001,  
9.7078

■ 37.3362, 33.7082,  
3.6347

■ 37.3362, 33.7082,  
3.6347

■ 34.3795, 39.6801,  
5.0230

■ 40.8447, 27.1984,  
2.7306

■ 32.0464, 44.6792,  
6.8774

■ 44.8225, 20.4838,  
2.2703

■ 30.3876, 48.2364,  
9.0990

■ 49.1972, 13.7634,  
2.1940

■ 29.3834, 50.1070,  
11.4837

■ 53.9066, 7.1437,  
2.4383

■ 29.0845, 50.6456,  
12.3016

■ 58.8995, 0.6704,  
2.9458

■ 64.1350, -5.6458,  
3.6685

■ 69.5800, -11.8124,  
4.5681

■ 75.2083, -17.8449,  
5.6138

■ 80.9985, -23.7616,  
6.7817

# Harmonies

## Analogous

The Analogous color harmony consists of three colors that are next to each other on the color wheel.



37.3372, 29.4199, -13.5866



37.3362, 33.7082, 3.6347



37.3372, 27.1826, 14.7183

# Triad

The Triadic color harmony groups three colors that are evenly spaced from another and form a triangle on the color wheel.



37.3372, 33.7057, 3.6356



37.3372, -17.3188, 19.0956



37.3372, -14.7930, -34.3868

# Complementary

The Complementary color scheme is a pair of colors which are on the opposite of each other on the color wheel.



37.3362, 33.7082, 3.6347



55.5781, -29.3195, 8.0810

# Split Complementary

Split-complementary colors differ from the complementary color scheme. The scheme consists of three colors, the original color and two neighbors of the complement color.



37.3372, -24.2850, -17.6833



37.3362, 33.7082, 3.6347



37.3372, -25.5628, 12.9036

# Square

The Square scheme is like the rectangle color scheme, but the four colors are evenly spaced on the color wheel.



37.3372, 33.7057, 3.6356



37.3372, -3.7028, 20.9726



37.3372, -27.8835, 0.3548



37.3372, -0.2544, -40.2395



# Rectangle

The Rectangle color scheme consists of four colors that form a rectangle on the color wheel.



37.3362, 33.7082, 3.6347



37.3372, 18.1303, 18.6326



37.3372, -27.8835, 0.3548



37.3372, -18.5925, -29.5876

# Sweetspot

The Sweet Spot groups the original color and five complimentary colors.



37.3372, 33.7057, 3.6356



71.4773, 10.4585, 3.2122



35.9084, 35.1539, -37.6228



33.2311, 5.7444, 1.4794



92.0917, -4.9138, 5.0035



39.3538, -2.0998, 2.1382



# Same Dimension

The Same Dimension uses a secret algorithm to generate beautiful new colors.



37.3372, 33.7057, 3.6356



44.9977, 55.2386, 7.3920



40.0614, 22.6391, 15.7517



27.5300, 1.2479, 1.3285



25.4576, 44.3601, 10.5338



4.0834, 7.3307, 0.0207



# Inverse Universe

The Inverse Universe completely reimagines the original color for something new.



37.3372, 33.7057, 3.6356



44.9977, 55.2386, 7.3920



50.9366, -16.9757, -11.4652



27.5300, 1.2479, 1.3285



25.4576, 44.3601, 10.5338

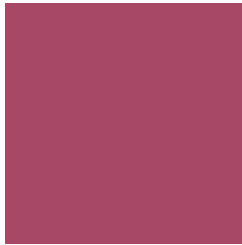


4.0834, 7.3307, 0.0207



# Previews

## White Background



This preview shows how the HunterLab color 37.3362, 33.7082, 3.6347 looks on a white background.

## Color Contrast Check

Large Text (above 18pt) WCAG AA ✓ Pass

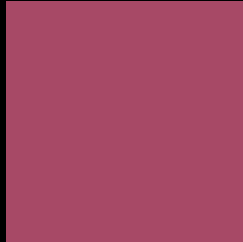
Any Text WCAG AA ✓ Pass

Large Text (above 18pt) WCAG AAA ✓ Pass

Any Text WCAG AAA × Fail



# Black Background



This preview shows how the HunterLab color 37.3362, 33.7082, 3.6347 looks on a black background.

## Color Contrast Check

Large Text (above 18pt) WCAG AA ✓ Pass

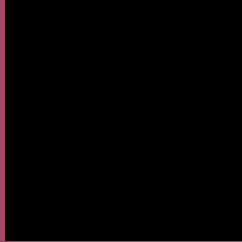
Any Text WCAG AA × Fail

Large Text (above 18pt) WCAG AAA × Fail

Any Text WCAG AAA × Fail

If you want to check with other color combinations, try the [Color Contrast Checker](#).

## HunterLab 37.3362, 33.7082, 3.6347 Background



This preview shows how black text looks on a background with the HunterLab color 37.3362, 33.7082, 3.6347.



This preview shows how white text looks on a background with the HunterLab color 37.3362, 33.7082,



# Color Blindness Simulation

Color vision deficiency is a very complex topic, and I could not describe the different causes any better than Wikipedia does, so if you want to learn more, you should check out their [article about color blindness](#).

## Dichromacy



### Original Color

37.3362, 33.7082, 3.6347

### Protanopia

37.5253, 0.0695, -4.9514

### Deuteranopia

37.4710, 2.6870, 4.8527



## Tritanopia

37.3045, 28.9513, 10.8065

# Trichromacy



## Original Color

37.3362, 33.7082, 3.6347

## Protanomaly

36.6832, 11.2232, -2.4502

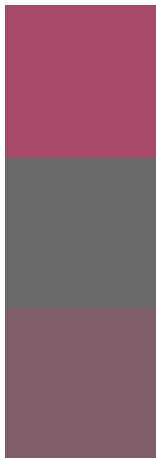
## Deuteranomaly

36.9016, 13.5262, 4.0092

## Tritanomaly

37.4128, 30.4912, 8.6096

# Monochromacy



## Original Color

37.3362, 33.7082, 3.6347

## Achromatopsia

37.2064, -1.9852, 2.0215

## Achromatomaly

36.4966, 10.0561, 1.8191

# CSS Examples

## Text

The CSS property to change the color of the text to HunterLab 37.3362, 33.7082, 3.6347 is called "color". The color property can be set on classes, ids or directly on the HTML element.

This example shows how text in the color `rgb(167, 73, 102)` looks like.

```
.text, #text, p{  
    color:rgb(167, 73, 102)  
}
```

If you want to add a text shadow in that color use the text-shadow property, you can generate a text shadow directly with our [CSS Text Shadow Generator](#).

Here you see how black text with a 4 pixel rgb(167, 73, 102) colored shadow looks like.

```
.shadow{ text-shadow: 4px 4px 2px rgb(167, 73, 102) }
```

## Border

The CSS property to change the border of an element to HunterLab 37.3362, 33.7082, 3.6347 is called "border". The border property can be set on classes, ids or directly on the HTML element.

This example shows the color as border, it can be applied via the CSS property "border" or "border-color".

```
.border, #border, table{ border:4px solid rgb(167, 73, 102) }
```



If only the border color should be changed use the property border-color.

```
.border{ border-color:rgb(167, 73, 102) }
```

If you want to add a box shadow in that color use:

Here you see how a box with a 4 pixel rgb(167, 73, 102) colored shadow looks like.

```
.boxshadow{ -moz-box-shadow:4px 4px 4px  
4px rgb(167, 73, 102); -webkit-box-  
shadow:4px 4px 4px 4px rgb(167, 73, 102);  
box-shadow:4px 4px 4px 4px rgb(167, 73,  
102) }
```

# Background

The CSS property to change the background color of an element to HunterLab 37.3362, 33.7082, 3.6347 is called "background". The background property can be set on classes, ids or directly on the HTML element.

```
.background, #background, body{  
background: rgb(167, 73, 102) }
```

If only the background color should be changed can be used:

```
.background{ background-color: rgb(167, 73,  
102) }
```

This example shows the color as background, it is applied via the CSS property "background".

To optimize and compress your CSS code, you can use our [online CSS compressor and optimizer](#) based on csstidy. If you want to create a linear or radial gradient as background or border, check our [CSS Gradient Generator](#).

Hey! You found this booklet interesting? Support Converting Colors with the new Membership Option!

The pro membership hides all ads, plus gives you double the colors in the color bucket, and more awesome pro features!

**[Learn more, Memberships starting at \\$2.50/m!](#)**

**Follow me  
on Twitter!**

@ConvertingColor