

Converting Colors

HunterLab(37.7857, 0.3222,
8.4152)

Have a look what the booklet for
HunterLab(37.7857, 0.3222, 8.4152)
contains.

HunterLab(37.6878, 0.3049, 8.3598)	3
<i>Conversions</i>	4
<i>Details</i>	6
<i>Harmonies</i>	12
<i>Previews</i>	24
<i>Color Blindness Simulation</i>	28
<i>CSS Examples</i>	31

Color

**HunterLab(37.6878, 0.3049,
8.3598)**

Conversions

Conversions Part 1

Format	Color
Hex	756759
RGB	117, 103, 89
RGB Percent	46%, 40%, 35%
CMY	0.5412, 0.5961, 0.6510
CMYK	0.00, 0.12, 0.24, 0.54
HSL	30°, 14%, 40%
HSV	30°, 24%, 46%
XYZ	13.9896, 14.2037, 11.4555
YIQ	105.5900, 12.8380, -1.3860

Conversions

Conversions Part 2

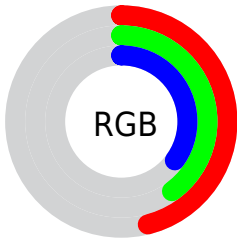
Format	Color
R_{YB}	117, 117, 89
Decimal	7694169
CIE Lab	44.52, 3.11, 9.94
CIE LCh	45, 10.412, 72.601
Yxy	14.2043, 0.3528, 0.3582
Android (android.graphics.Color)	4285884249 (0xFF756759)
YUV	105.5900, -8.1789, 10.0066
Hunter-Lab	37.6878, 0.3049, 8.3598

Details

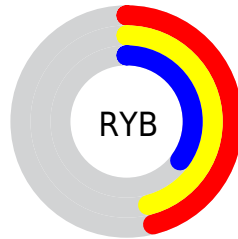
The HunterLab color $37.6878, 0.3049, 8.3598$ is a dark color, and the websafe version is hex 666666 . A complement of this color would be $36.2056, -3.3056, -5.3084$, and the grayscale version is $37.8360, -2.0188, 2.0557$.

A 20% lighter version of the original color is $57.8016, -0.5472, 10.5525$, and $20.5711, 0.7409, 6.1015$ is the 20% darker color. If you saturate the color by 10%, you get $35.9165, 1.6319, 10.4775$, and if you desaturate by 10%, it is $39.5240, -0.8659, 5.9851$.

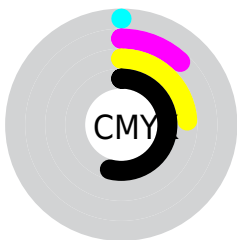
Distribution



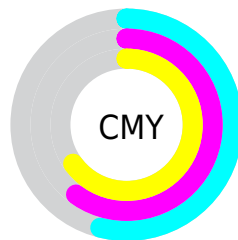
- Red (46%)
- Green (40%)
- Blue (35%)



- Red (46%)
- Yellow (46%)
- Blue (35%)



- Cyan (0%)
- Magenta (12%)
- Yellow (24%)
- Black (54%)



- Cyan (54%)
- Magenta (60%)
- Yellow (65%)

Brightness & Saturation Gradients

These gradients show how the HunterLab color 37.6878, 0.3049, 8.3598 changes by changing the brightness by 10 percent. The first figure shows a shift by +10% for each color and the second figure -10%.

Similar to the brightness gradients but the following saturation gradients show a change of the HunterLab color 37.6878, 0.3049, 8.3598 by changing the saturation by 10% instead.

■ 37.6878, 0.3049,
8.3598

■ 37.6878, 0.3049,
8.3598

147.8169, -4.2675,
18.5914

■ 28.7453, 0.5863,
7.2175

■ 57.8370, -0.4248,
10.6042

■ 20.6486, 0.8039,
6.0402

■ 68.9386, -0.8600,
11.7220

■ 13.4986, 0.9435,
4.7970

■ 80.6717, -1.3372,
12.8438

■ 7.0774, 1.5389,
4.9542

■ 93.0039, -1.8536,
13.9724

0.0000, NaN, NaN

0.0000, NaN, NaN

■ 105.9074, -2.4068,
15.1102

0.0000, NaN, NaN

119.3580, -2.9946,

0.0000, NaN, NaN

16.2585

0.0000, NaN, NaN

133.3342, -3.6153,
17.4187

■ 37.6878, 0.3049,
8.3598

■ 37.6878, 0.3049,
8.3598

■ 35.9165, 1.6319,
10.4775

■ 39.5240, -0.8659,
5.9851

■ 34.2126, 3.1279,
12.3107

■ 41.4176, -1.8873,
3.3762

■ 32.5828, 4.7990,
13.8329

■ 43.3652, -2.7709,
0.5557

■ 31.0330, 6.6493,
15.0177

■ 45.3628, -3.5272,
-2.4564

■ 29.5695, 8.6776,
15.8419

■ 47.4070, -4.1664,
-5.6424

■ 28.1985, 10.8754,
16.2894

■ 49.4945, -4.6977,
-8.9864

■ 26.9245, 13.2184,
16.3731

■ 51.6224, -5.1300,
-12.4745

■ 26.1911, 14.6517,
16.3954

■ 53.7882, -5.4713,
-16.0945

■ 55.9895, -5.7292,
-19.8356

Harmonies

Analogous

The Analogous color harmony consists of three colors that are next to each other on the color wheel.



37.6887, 3.7895, 6.6557



37.6878, 0.3049, 8.3598



37.6887, -3.6687, 8.4892

Triad

The Triadic color harmony groups three colors that are evenly spaced from another and form a triangle on the color wheel.



37.6887, 0.3037, 8.3603



37.6887, -9.1971, 0.4279



37.6887, 3.3104, -3.7125

Complementary

The Complementary color scheme is a pair of colors which are on the opposite of each other on the color wheel.



37.6878, 0.3049, 8.3598



36.2056, -3.3056, -5.3084

Split Complementary

Split-complementary colors differ from the complementary color scheme. The scheme consists of three colors, the original color and two neighbors of the complement color.



37.6887, -0.3282, -5.7703



37.6878, 0.3049, 8.3598



37.6887, -7.4844, -3.2185

Square

The Square scheme is like the rectangle color scheme, but the four colors are evenly spaced on the color wheel.



37.6887, 0.3037, 8.3603



37.6887, -9.0438, 4.1649



37.6887, -4.2750, -5.5807



37.6887, 5.5742, -0.1918

Rectangle

The Rectangle color scheme consists of four colors that form a rectangle on the color wheel.



37.6878, 0.3049, 8.3598



37.6887, -6.0497, 7.6855



37.6887, -4.2750, -5.5807



37.6887, 2.2012, -4.6139

Sweetspot

The Sweet Spot groups the original color and five complimentary colors.



37.6887, 0.3037, 8.3603



54.5920, -2.1022, 5.6850



34.5053, 8.7123, -0.6348



26.1290, -0.9830, 2.7921



77.7063, -4.1462, 4.2219



27.0627, -1.4440, 1.4704

Same Dimension

The Same Dimension uses a secret algorithm to generate beautiful new colors.



37.6887, 0.3037, 8.3603



49.0433, 1.4138, 12.8802



41.5041, -5.9669, 11.9685



19.9382, -0.6821, 2.3349



27.4351, 15.5080, 17.1769



59.1317, 37.5482, 37.0940

Inverse Universe

The Inverse Universe completely reimagines the original color for something new.



36.2056, -3.3056, -5.3084



46.5936, -4.5281, -9.7176



32.4857, 3.0607, -10.6450



19.6576, -1.3680, -0.2478



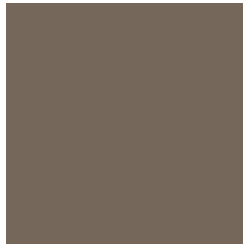
21.8468, 4.3902, -36.7839



46.4166, 13.2353, -86.5879

Previews

White Background



This preview shows how the HunterLab color 37.6878, 0.3049, 8.3598 looks on a white background.

Color Contrast Check

Large Text (above 18pt) WCAG AA ✓ Pass

Any Text WCAG AA ✓ Pass

Large Text (above 18pt) WCAG AAA ✓ Pass

Any Text WCAG AAA × Fail

Black Background



This preview shows how the HunterLab color 37.6878, 0.3049, 8.3598 looks on a black background.

Color Contrast Check

Large Text (above 18pt) WCAG AA ✓ Pass

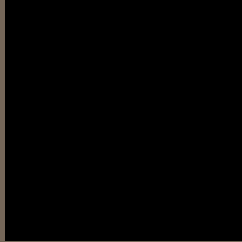
Any Text WCAG AA × Fail

Large Text (above 18pt) WCAG AAA × Fail

Any Text WCAG AAA × Fail

If you want to check with other color combinations, try the [Color Contrast Checker](#).

HunterLab 37.6878, 0.3049, 8.3598 Background



This preview shows how black text looks on a background with the HunterLab color 37.6878, 0.3049, 8.3598.

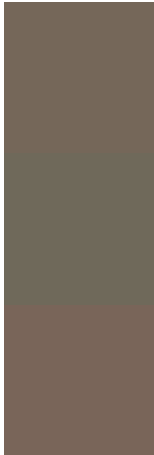


This preview shows how white text looks on a background with the HunterLab color 37.6878, 0.3049, 8.3598.

Color Blindness Simulation

Color vision deficiency is a very complex topic, and I could not describe the different causes any better than Wikipedia does, so if you want to learn more, you should check out their [article about color blindness](#).

Dichromacy



Original Color

37.6878, 0.3049, 8.3598

Protanopia

37.7105, -2.3166, 7.9884

Deuteranopia

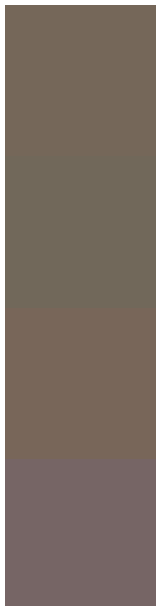
37.5414, 2.4952, 8.2500



Tritanopia

37.5752, 4.8908, 0.8531

Trichromacy



Original Color

37.6878, 0.3049, 8.3598

Protanomaly

37.6159, -1.2635, 7.9103

Deuteranomaly

37.7055, 1.7135, 8.4025

Tritanomaly

37.5480, 3.0986, 3.7500

Monochromacy



Original Color

37.6878, 0.3049, 8.3598

Achromatopsia

37.9643, -2.0257, 2.0627

Achromatomaly

37.8659, -1.2958, 4.4320

CSS Examples

Text

The CSS property to change the color of the text to HunterLab 37.6878, 0.3049, 8.3598 is called "color". The color property can be set on classes, ids or directly on the HTML element.

This example shows how text in the color `rgb(117, 103, 89)` looks like.

```
.text, #text, p{  
    color:rgb(117, 103, 89)  
}
```

If you want to add a text shadow in that color use the text-shadow property, you can generate a text shadow directly with our [CSS Text Shadow Generator](#).

Here you see how black text with a 4 pixel rgb(117, 103, 89) colored shadow looks like.

```
.shadow{ text-shadow: 4px 4px 2px rgb(117, 103, 89) }
```

Border

The CSS property to change the border of an element to HunterLab 37.6878, 0.3049, 8.3598 is called "border". The border property can be set on classes, ids or directly on the HTML element.

This example shows the color as border, it can be applied via the CSS property "border" or "border-color".

```
.border, #border, table{ border:4px solid rgb(117, 103, 89) }
```


If only the border color should be changed use the property `border-color`.

```
.border{ border-color:rgb(117, 103, 89) }
```

If you want to add a box shadow in that color use:

Here you see how a box with a 4 pixel `rgb(117, 103, 89)` colored shadow looks like.

```
.boxshadow{ -moz-box-shadow:4px 4px 4px  
4px rgb(117, 103, 89); -webkit-box-  
shadow:4px 4px 4px 4px rgb(117, 103, 89);  
box-shadow:4px 4px 4px 4px rgb(117, 103,  
89) }
```

Background

The CSS property to change the background color of an element to HunterLab 37.6878, 0.3049, 8.3598 is called "background". The background property can be set on classes, ids or directly on the HTML element.

```
.background, #background, body{  
background: rgb(117, 103, 89) }
```

If only the background color should be changed can be used:

```
.background{ background-color: rgb(117,  
103, 89) }
```

This example shows the color as background, it is applied via the CSS property "background".

To optimize and compress your CSS code, you can use our [online CSS compressor and optimizer](#) based on csstidy. If you want to create a linear or radial gradient as background or border, check our [CSS Gradient Generator](#).

Hey! You found this booklet interesting? Support Converting Colors with the new Membership Option!

The pro membership hides all ads, plus gives you double the colors in the color bucket, and more awesome pro features!

[Learn more, Memberships starting at \\$2.50/m!](#)

**Follow me
on Twitter!**

@ConvertingColor