

Converting Colors

HunterLab(37.8321, 4.3469,
10.6024)

Have a look what the booklet for
HunterLab(37.8321, 4.3469,
10.6024) contains.

HunterLab(37.7504, 4.2529, 10.4830)	3
<i>Conversions</i>	4
<i>Details</i>	6
<i>Harmonies</i>	12
<i>Previews</i>	24
<i>Color Blindness Simulation</i>	28
<i>CSS Examples</i>	31

Color

**HunterLab(37.7504, 4.2529,
10.4830)**

Conversions

Conversions Part 1

Format	Color
Hex	7F6453
RGB	127, 100, 83
RGB Percent	50%, 39%, 33%
CMY	0.5020, 0.6078, 0.6745
CMYK	0.00, 0.21, 0.35, 0.50
HSL	23°, 21%, 41%
HSV	23°, 35%, 50%
XYZ	14.8709, 14.2509, 10.1506
YIQ	106.1350, 21.5490, 0.4370

Conversions

Conversions Part 2

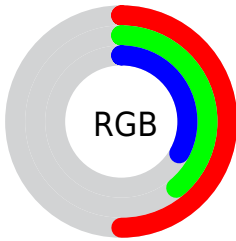
Format	Color
R_{YB}	127, 111, 83
Decimal	8348755
CIE Lab	44.59, 8.26, 13.78
CIE LCh	45, 16.065, 59.077
Yxy	14.2516, 0.3787, 0.3629
Android (android.graphics.Color)	4286538835 (0xFF7F6453)
YUV	106.1350, -11.4056, 18.2986
Hunter-Lab	37.7504, 4.2529, 10.4830

Details

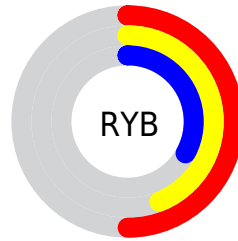
The HunterLab color $[37.7504, 4.2529, 10.4830]$ is a dark color, and the websafe version is hex 996666 . A complement of this color would be $[38.1087, -5.9212, -7.8600]$, and the grayscale version is $[38.0524, -2.0304, 2.0675]$.

A 20% lighter version of the original color is $[58.0090, 4.2024, 13.1381]$, and $[20.6493, 4.3499, 7.5350]$ is the 20% darker color. If you saturate the color by 10%, you get $[35.5654, 6.5846, 12.2876]$, and if you desaturate by 10%, it is $[40.0415, 2.1052, 8.4308]$.

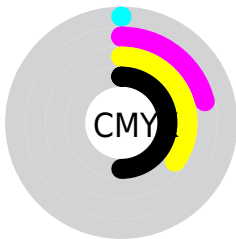
Distribution



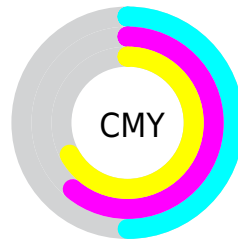
- Red (50%)
- Green (39%)
- Blue (33%)



- Red (50%)
- Yellow (44%)
- Blue (33%)



- Cyan (0%)
- Magenta (21%)
- Yellow (35%)
- Black (50%)



- Cyan (50%)
- Magenta (61%)
- Yellow (67%)

Brightness & Saturation Gradients

These gradients show how the HunterLab color 37.7504, 4.2529, 10.4830 changes by changing the brightness by 10 percent. The first figure shows a shift by +10% for each color and the second figure -10%.

Similar to the brightness gradients but the following saturation gradients show a change of the HunterLab color 37.7504, 4.2529, 10.4830 by changing the saturation by 10% instead.

■ 37.7504, 4.2529,
10.4830

■ 37.7504, 4.2529,
10.4830

147.9157, 1.7973,
22.4641

■ 28.8025, 4.2244,
9.0620

■ 57.9092, 4.0796,
13.2089

■ 20.6999, 4.1040,
7.5686

■ 69.0152, 3.8987,
14.5402

■ 13.5430, 3.8682,
5.9981

■ 80.7524, 3.6628,
15.8616

■ 7.1297, 4.6649,
4.9908

■ 93.0885, 3.3766,
17.1784

0.0000, NaN, NaN

0.0000, NaN, NaN

■ 105.9958, 3.0441,
18.4945

0.0000, NaN, NaN

119.4499, 2.6683,

0.0000, NaN, NaN

19.8127

0.0000, NaN, NaN

133.4296, 2.2519,
21.1354

■ 37.7504, 4.2529,
10.4830

■ 37.7504, 4.2529,
10.4830

■ 35.5654, 6.5846,
12.2876

■ 40.0415, 2.1052,
8.4308

■ 33.4952, 9.1107,
13.8072

■ 42.4257, 0.1354,
6.1612

■ 31.5537, 11.8280,
15.0041

■ 44.8949, -1.6709,
3.7026

■ 29.7544, 14.7226,
15.8407

■ 47.4414, -3.3274,
1.0785

■ 28.1117, 17.7632,
16.2861

■ 50.0582, -4.8477,
-1.6912

■ 26.6382, 20.8894,
16.3453

■ 52.7394, -6.2447,
-4.5895

■ 25.9134, 22.5286,
16.3621

■ 55.4798, -7.5306,
-7.6025

■ 58.2748, -8.7162,
-10.7182

■ 61.1205, -9.8116,
-13.9266

Harmonies

Analogous

The Analogous color harmony consists of three colors that are next to each other on the color wheel.



37.7513, 8.8785, 7.1207



37.7504, 4.2529, 10.4830



37.7513, -1.8257, 11.6567

Triad

The Triadic color harmony groups three colors that are evenly spaced from another and form a triangle on the color wheel.



37.7513, 4.2515, 10.4835



37.7513, -13.1220, 2.2357



37.7513, 3.9009, -9.1512

Complementary

The Complementary color scheme is a pair of colors which are on the opposite of each other on the color wheel.



37.7504, 4.2529, 10.4830



38.1087, -5.9212, -7.8600

Split Complementary

Split-complementary colors differ from the complementary color scheme. The scheme consists of three colors, the original color and two neighbors of the complement color.



37.7513, -2.2066, -11.0040



37.7504, 4.2529, 10.4830



37.7513, -11.8006, -3.8276

Square

The Square scheme is like the rectangle color scheme, but the four colors are evenly spaced on the color wheel.



37.7513, 4.2515, 10.4835



37.7513, -11.6298, 7.3881



37.7513, -7.9001, -8.9185



37.7513, 8.6672, -4.1915

Rectangle

The Rectangle color scheme consists of four colors that form a rectangle on the color wheel.



37.7504, 4.2529, 10.4830



37.7513, -5.8021, 11.2112



37.7513, -7.9001, -8.9185



37.7513, 1.9247, -10.1900

Sweetspot

The Sweet Spot groups the original color and five complimentary colors.



37.7513, 4.2515, 10.4835



58.2166, -0.9099, 6.8242



34.3910, 15.9447, -4.0273



27.9806, -0.3005, 3.4889



80.9895, -4.3214, 4.4003



29.8298, -1.5916, 1.6207

Same Dimension

The Same Dimension uses a secret algorithm to generate beautiful new colors.



37.7513, 4.2515, 10.4835



48.0644, 8.2802, 16.0709



43.6154, -5.7010, 15.6508



21.4374, -0.4334, 2.3600



26.0187, 22.6372, 16.4289

0.0000, NaN, NaN

Inverse Universe

The Inverse Universe completely reimagines the original color for something new.



38.1087, -5.9212, -7.8600



48.6412, -8.3922, -14.0025



32.2070, 4.0427, -17.0465



21.4858, -1.7836, -0.0740

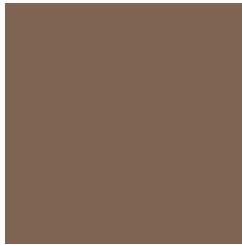


26.5085, -1.9188, -28.9911

0.0000, NaN, NaN

Previews

White Background



This preview shows how the HunterLab color 37.7504, 4.2529, 10.4830 looks on a white background.

Color Contrast Check

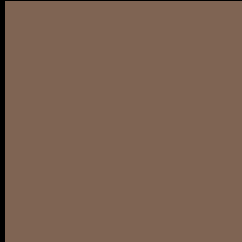
Large Text (above 18pt) WCAG AA ✓ Pass

Any Text WCAG AA ✓ Pass

Large Text (above 18pt) WCAG AAA ✓ Pass

Any Text WCAG AAA × Fail

Black Background



This preview shows how the HunterLab color 37.7504, 4.2529, 10.4830 looks on a black background.

Color Contrast Check

Large Text (above 18pt) WCAG AA ✓ Pass

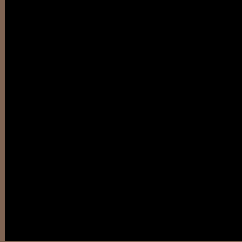
Any Text WCAG AA × Fail

Large Text (above 18pt) WCAG AAA × Fail

Any Text WCAG AAA × Fail

If you want to check with other color combinations, try the [Color Contrast Checker](#).

HunterLab 37.7504, 4.2529, 10.4830 Background



This preview shows how black text looks on a background with the HunterLab color 37.7504, 4.2529, 10.4830.



This preview shows how white text looks on a background with the HunterLab color 37.7504, 4.2529,

Color Blindness Simulation

Color vision deficiency is a very complex topic, and I could not describe the different causes any better than Wikipedia does, so if you want to learn more, you should check out their [article about color blindness](#).

Dichromacy



Original Color

37.7504, 4.2529, 10.4830

Protanopia

37.7091, -2.4974, 9.3498

Deuteranopia

37.7054, 2.7883, 10.4144



Tritanopia

37.7041, 8.9449, 2.7950

Trichromacy



Original Color

37.7504, 4.2529, 10.4830

Protanomaly

37.6009, -0.1662, 9.6149

Deuteranomaly

37.8046, 3.1202, 10.5150

Tritanomaly

37.6418, 7.0649, 5.8877

Monochromacy



Original Color

37.7504, 4.2529, 10.4830

Achromatopsia

37.9643, -2.0257, 2.0627

Achromatomaly

37.8944, 0.0755, 5.2722

CSS Examples

Text

The CSS property to change the color of the text to HunterLab 37.7504, 4.2529, 10.4830 is called "color". The color property can be set on classes, ids or directly on the HTML element.

This example shows how text in the color `rgb(127, 100, 83)` looks like.

```
.text, #text, p{  
    color:rgb(127, 100, 83)  
}
```

If you want to add a text shadow in that color use the text-shadow property, you can generate a text shadow directly with our [CSS Text Shadow Generator](#).

Here you see how black text with a 4 pixel rgb(127, 100, 83) colored shadow looks like.

```
.shadow{ text-shadow: 4px 4px 2px rgb(127, 100, 83) }
```

Border

The CSS property to change the border of an element to HunterLab 37.7504, 4.2529, 10.4830 is called "border". The border property can be set on classes, ids or directly on the HTML element.

This example shows the color as border, it can be applied via the CSS property "border" or "border-color".

```
.border, #border, table{ border:4px solid rgb(127, 100, 83) }
```


If only the border color should be changed use the property `border-color`.

```
.border{ border-color:rgb(127, 100, 83) }
```

If you want to add a box shadow in that color use:

Here you see how a box with a 4 pixel `rgb(127, 100, 83)` colored shadow looks like.

```
.boxshadow{ -moz-box-shadow:4px 4px 4px  
4px rgb(127, 100, 83); -webkit-box-  
shadow:4px 4px 4px 4px rgb(127, 100, 83);  
box-shadow:4px 4px 4px 4px rgb(127, 100,  
83) }
```

Background

The CSS property to change the background color of an element to HunterLab 37.7504, 4.2529, 10.4830 is called "background". The background property can be set on classes, ids or directly on the HTML element.

```
.background, #background, body{  
background: rgb(127, 100, 83) }
```

If only the background color should be changed can be used:

```
.background{ background-color: rgb(127,  
100, 83) }
```

This example shows the color as background, it is applied via the CSS property "background".

To optimize and compress your CSS code, you can use our [online CSS compressor and optimizer](#) based on csstidy. If you want to create a linear or radial gradient as background or border, check our [CSS Gradient Generator](#).

Hey! You found this booklet interesting? Support Converting Colors with the new Membership Option!

The pro membership hides all ads, plus gives you double the colors in the color bucket, and more awesome pro features!

[Learn more, Memberships starting at \\$2.50/m!](#)

**Follow me
on Twitter!**

@ConvertingColor