

Converting Colors

HunterLab(37.9764, 7.3306,
12.5675)

Have a look what the booklet for
HunterLab(37.9764, 7.3306,
12.5675) contains.

HunterLab(37.9764, 7.3306, 12.5675)	3
<i>Conversions</i>	4
<i>Details</i>	6
<i>Harmonies</i>	12
<i>Previews</i>	24
<i>Color Blindness Simulation</i>	28
<i>CSS Examples</i>	31

Color

**HunterLab(37.9764, 7.3306,
12.5675)**

Conversions

Conversions Part 1

Format	Color
Hex	87624D
RGB	135, 98, 77
RGB Percent	53%, 38%, 30%
CMY	0.4706, 0.6157, 0.6980
CMYK	0.00, 0.27, 0.43, 0.47
HSL	22°, 27%, 42%
HSV	22°, 43%, 53%
XYZ	15.6989, 14.4221, 8.9775
YIQ	106.6690, 28.7930, 1.3130

Conversions

Conversions Part 2

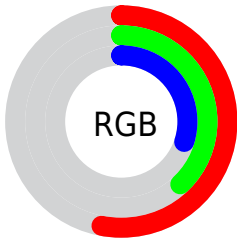
Format	Color
R_{YB}	135, 110, 77
Decimal	8872525
CIE _{Lab}	44.83, 12.12, 17.84
CIE _{LCh}	45, 21.566, 55.792
Yxy	14.4228, 0.4015, 0.3689
Android (android.graphics.Color)	4287062605 (0xFF87624D)
YUV	106.6690, -14.6268, 24.8463
Hunter-Lab	37.9764, 7.3306, 12.5675

Details

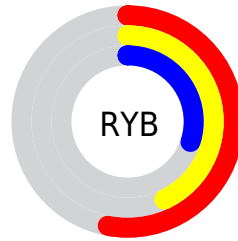
The HunterLab color $37.9764, 7.3306, 12.5675$ is a dark color, and the websafe version is hex 996666 . A complement of this color would be $39.1932, -7.3283, -10.6526$, and the grayscale version is $38.2651, -2.0417, 2.0790$.

A 20% lighter version of the original color is $58.2653, 7.5542, 15.9492$, and $20.7628, 6.7522, 9.0100$ is the 20% darker color. If you saturate the color by 10%, you get $35.6730, 10.1674, 14.2210$, and if you desaturate by 10%, it is $40.4140, 4.6972, 10.6298$.

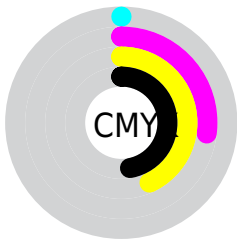
Distribution



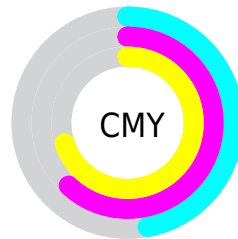
- Red (53%)
- Green (38%)
- Blue (30%)



- Red (53%)
- Yellow (43%)
- Blue (30%)



- Cyan (0%)
- Magenta (27%)
- Yellow (43%)
- Black (47%)



- Cyan (47%)
- Magenta (62%)
- Yellow (70%)

Brightness & Saturation Gradients

These gradients show how the HunterLab color 37.9764, 7.3306, 12.5675 changes by changing the brightness by 10 percent. The first figure shows a shift by +10% for each color and the second figure -10%.

Similar to the brightness gradients but the following saturation gradients show a change of the HunterLab color 37.9764, 7.3306, 12.5675 by changing the saturation by 10% instead.

37.9764, 7.3306,
12.5675

37.9764, 7.3306,
12.5675

148.2718, 6.4183,
26.4450

29.0091, 7.0812,
10.8432

58.1698, 7.5585,
15.8172

20.8850, 6.7231,
9.0070

69.2915, 7.5622,
17.3802

13.7038, 6.2293,
7.2517

81.0436, 7.5022,
18.9182

7.3148, 6.8318,
5.1204

93.3938, 7.3845,
20.4389

0.0000, NaN, NaN

0.0000, NaN, NaN

106.3145, 7.2136,
21.9480

0.0000, NaN, NaN

119.7816, 6.9935,

0.0000, NaN, NaN

23.4499

0.0000, NaN, NaN

133.7737, 6.7275,
24.9480

■ 37.9764, 7.3306,
12.5675

■ 37.9764, 7.3306,
12.5675

■ 35.6730, 10.1674,
14.2210

■ 40.4140, 4.6972,
10.6298

■ 33.5165, 13.2094,
15.5456

■ 42.9692, 2.2659,
8.4456

■ 31.5246, 16.4373,
16.4980

■ 45.6308, 0.0233,
6.0493

■ 29.7152, 19.8119,
17.0397

■ 48.3882, -2.0449,
3.4699

■ 28.1052, 23.2655,
17.1501

■ 51.2322, -3.9542,
0.7316

■ 27.0888, 25.6400,
17.1408

■ 54.1549, -5.7195,
-2.1455

■ 57.1495, -7.3553,
-5.1448

■ 60.2100, -8.8748,
-8.2523

■ 63.3312, -10.2899,
-11.4567

Harmonies

Analogous

The Analogous color harmony consists of three colors that are next to each other on the color wheel.



37.9773, 13.3719, 8.0764



37.9764, 7.3306, 12.5675



37.9773, -0.8549, 14.2683

Triad

The Triadic color harmony groups three colors that are evenly spaced from another and form a triangle on the color wheel.



37.9773, 7.3289, 12.5680



37.9773, -16.6186, 3.1601



37.9773, 5.1395, -14.2259

Complementary

The Complementary color scheme is a pair of colors which are on the opposite of each other on the color wheel.



37.9764, 7.3306, 12.5675



39.1932, -7.3283, -10.6526

Split Complementary

Split-complementary colors differ from the complementary color scheme. The scheme consists of three colors, the original color and two neighbors of the complement color.



37.9773, -3.1878, -16.3196



37.9764, 7.3306, 12.5675



37.9773, -15.3087, -5.1194

Square

The Square scheme is like the rectangle color scheme, but the four colors are evenly spaced on the color wheel.



37.9773, 7.3289, 12.5680



37.9773, -14.3021, 9.6245



37.9773, -10.5592, -12.6872



37.9773, 12.0339, -7.4557

Rectangle

The Rectangle color scheme consists of four colors that form a rectangle on the color wheel.



37.9764, 7.3306, 12.5675



37.9773, -6.2590, 13.9303



37.9773, -10.5592, -12.6872



37.9773, 2.3958, -15.5544

Sweetspot

The Sweet Spot groups the original color and five complimentary colors.



37.9773, 7.3289, 12.5680



60.9445, 0.1261, 8.2048



34.1902, 22.2531, -6.5129



28.9859, 0.3371, 4.2620



83.1908, -4.4389, 4.5199



31.6988, -1.6914, 1.7223

Same Dimension

The Same Dimension uses a secret algorithm to generate beautiful new colors.



37.9773, 7.3289, 12.5680



47.6776, 13.6858, 19.0711



45.4811, -5.6876, 18.7725



22.2361, -0.3777, 2.4180



26.0583, 24.5004, 16.4859



1.9105, 0.5753, 1.1873

Inverse Universe

The Inverse Universe completely reimagines the original color for something new.



39.1932, -7.3283, -10.6526



49.6275, -10.1507, -18.6380



31.5198, 5.6494, -23.5952



22.3668, -1.9240, -0.0375



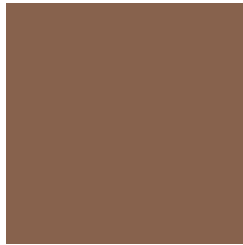
27.9157, -3.3092, -27.7486



2.0223, -0.7477, -0.9137

Previews

White Background



This preview shows how the HunterLab color 37.9764, 7.3306, 12.5675 looks on a white background.

Color Contrast Check

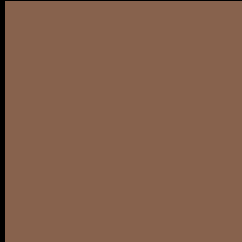
Large Text (above 18pt) WCAG AA ✓ Pass

Any Text WCAG AA ✓ Pass

Large Text (above 18pt) WCAG AAA ✓ Pass

Any Text WCAG AAA × Fail

Black Background



This preview shows how the HunterLab color 37.9764, 7.3306, 12.5675 looks on a black background.

Color Contrast Check

Large Text (above 18pt) WCAG AA ✓ Pass

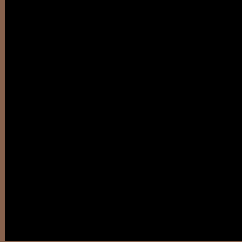
Any Text WCAG AA × Fail

Large Text (above 18pt) WCAG AAA × Fail

Any Text WCAG AAA × Fail

If you want to check with other color combinations, try the [Color Contrast Checker](#).

HunterLab 37.9764, 7.3306, 12.5675 Background



This preview shows how black text looks on a background with the HunterLab color 37.9764, 7.3306, 12.5675.



This preview shows how white text looks on a background with the HunterLab color 37.9764, 7.3306,

Color Blindness Simulation

Color vision deficiency is a very complex topic, and I could not describe the different causes any better than Wikipedia does, so if you want to learn more, you should check out their [article about color blindness](#).

Dichromacy



Original Color

37.9764, 7.3306, 12.5675

Protanopia

38.0520, -2.8942, 11.2674

Deuteranopia

38.0265, 2.2693, 12.8107



Tritanopia

38.0291, 12.3375, 4.0512

Trichromacy



Original Color

37.9764, 7.3306, 12.5675

Protanomaly

37.9701, 0.8917, 11.5618

Deuteranomaly

38.0740, 3.7478, 12.8791

Tritanomaly

37.9345, 10.3702, 7.3708

Monochromacy



Original Color

37.9764, 7.3306, 12.5675

Achromatopsia

38.3441, -2.0459, 2.0833

Achromatomaly

38.1144, 0.7284, 6.2841

CSS Examples

Text

The CSS property to change the color of the text to HunterLab 37.9764, 7.3306, 12.5675 is called "color". The color property can be set on classes, ids or directly on the HTML element.

This example shows how text in the color `rgb(135, 98, 77)` looks like.

```
.text, #text, p{  
    color:rgb(135, 98, 77)  
}
```

If you want to add a text shadow in that color use the text-shadow property, you can generate a text shadow directly with our [CSS Text Shadow Generator](#).

Here you see how black text with a 4 pixel rgb(135, 98, 77) colored shadow looks like.

```
.shadow{ text-shadow: 4px 4px 2px rgb(135, 98, 77) }
```

Border

The CSS property to change the border of an element to HunterLab 37.9764, 7.3306, 12.5675 is called "border". The border property can be set on classes, ids or directly on the HTML element.

This example shows the color as border, it can be applied via the CSS property "border" or "border-color".

```
.border, #border, table{ border:4px solid rgb(135, 98, 77) }
```


If only the border color should be changed use the property border-color.

```
.border{ border-color:rgb(135, 98, 77) }
```

If you want to add a box shadow in that color use:

Here you see how a box with a 4 pixel rgb(135, 98, 77) colored shadow looks like.

```
.boxshadow{ -moz-box-shadow:4px 4px 4px  
4px rgb(135, 98, 77); -webkit-box-  
shadow:4px 4px 4px 4px rgb(135, 98, 77);  
box-shadow:4px 4px 4px 4px rgb(135, 98,  
77) }
```

Background

The CSS property to change the background color of an element to HunterLab 37.9764, 7.3306, 12.5675 is called "background". The background property can be set on classes, ids or directly on the HTML element.

```
.background, #background, body{  
background: rgb(135, 98, 77) }
```

If only the background color should be changed can be used:

```
.background{ background-color: rgb(135, 98,  
77) }
```

This example shows the color as background, it is applied via the CSS property "background".

To optimize and compress your CSS code, you can use our [online CSS compressor and optimizer](#) based on csstidy. If you want to create a linear or radial gradient as background or border, check our [CSS Gradient Generator](#).

Hey! You found this booklet interesting? Support Converting Colors with the new Membership Option!

The pro membership hides all ads, plus gives you double the colors in the color bucket, and more awesome pro features!

[Learn more, Memberships starting at \\$2.50/m!](#)

**Follow me
on Twitter!**

@ConvertingColor