

Converting Colors

HunterLab(38.0908, 11.8811,
13.3252)

Have a look what the booklet for
HunterLab(38.0908, 11.8811,
13.3252) contains.

HunterLab(38.2383, 11.8047, 13.4476)	3
<i>Conversions</i>	4
<i>Details</i>	6
<i>Harmonies</i>	12
<i>Previews</i>	24
<i>Color Blindness Simulation</i>	28
<i>CSS Examples</i>	31

Color

**HunterLab(38.2383, 11.8047,
13.4476)**

Conversions

Conversions Part 1

Format	Color
Hex	905F4B
RGB	144, 95, 75
RGB Percent	56%, 37%, 29%
CMY	0.4353, 0.6274, 0.7059
CMYK	0.00, 0.34, 0.48, 0.44
HSL	17°, 32%, 43%
HSV	17°, 48%, 56%
XYZ	16.8638, 14.6217, 8.5900
YIQ	107.3710, 35.6240, 4.1680

Conversions

Conversions Part 2

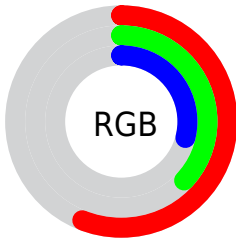
Format	Color
RYB	144, 103, 75
Decimal	9461579
CIELab	45.11, 17.54, 19.59
CIElCh	45, 26.296, 48.150
Yxy	14.6224, 0.4208, 0.3649
Android (android.graphics.Color)	4287651659 (0xFF905F4B)
YUV	107.3710, -15.9589, 32.1236
Hunter-Lab	38.2383, 11.8047, 13.4476

Details

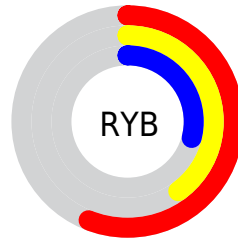
The HunterLab color **38.2383, 11.8047, 13.4476** is a dark color, and the websafe version is hex **996666**. A complement of this color would be **42.3367, -10.2435, -11.0429**, and the grayscale version is **38.5352, -2.0561, 2.0937**.

A 20% lighter version of the original color is **58.5597, 12.5476, 16.9973**, and **21.0641, 10.7509, 9.5190** is the 20% darker color. If you saturate the color by 10%, you get **35.6708, 15.4609, 15.0061**, and if you desaturate by 10%, it is **40.9966, 8.3550, 11.6117**.

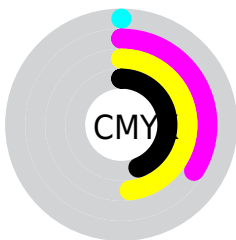
Distribution



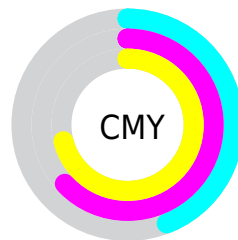
- Red (56%)
- Green (37%)
- Blue (29%)



- Red (56%)
- Yellow (40%)
- Blue (29%)



- Cyan (0%)
- Magenta (34%)
- Yellow (48%)
- Black (44%)



- Cyan (44%)
- Magenta (63%)
- Yellow (71%)

Brightness & Saturation Gradients

These gradients show how the HunterLab color 38.2383, 11.8047, 13.4476 changes by changing the brightness by 10 percent. The first figure shows a shift by +10% for each color and the second figure -10%.

Similar to the brightness gradients but the following saturation gradients show a change of the HunterLab color 38.2383, 11.8047, 13.4476 by changing the saturation by 10% instead.

■ 38.2383, 11.8047,
13.4476

■ 38.2383, 11.8047,
13.4476

148.6839, 12.9962,
28.1555

■ 29.2486, 11.2617,
11.5916

■ 58.4717, 12.5728,
16.9260

■ 21.0997, 10.5924,
9.6077

■ 69.6115, 12.8273,
18.5906

■ 13.8905, 9.7699,
7.7931

■ 81.3806, 13.0073,
20.2234

■ 7.5233, 9.9076,
5.2663

■ 93.7471, 13.1198,
21.8335

0.0000, NaN, NaN

0.0000, NaN, NaN

■ 106.6835, 13.1705,
23.4272

0.0000, NaN, NaN

120.1655, 13.1642,

0.0000, NaN, NaN

25.0097

0.0000, NaN, NaN

134.1720, 13.1049,
26.5847

■ 38.2383, 11.8047,
13.4476

■ 38.2383, 11.8047,
13.4476

■ 35.6708, 15.4609,
15.0061

■ 40.9966, 8.3550,
11.6117

■ 33.3164, 19.3003,
16.2304

■ 43.9205, 5.1248,
9.5451

■ 31.2031, 23.2603,
17.0648

■ 46.9915, 2.1061,
7.2886

■ 29.3579, 27.2387,
17.4626

■ 50.1930, -0.7145,
4.8746

■ 27.7994, 31.0621,
17.4899

■ 53.5107, -3.3538,
2.3290

■ 27.5086, 31.8064,
17.5075

■ 56.9327, -5.8298,
-0.3280

■ 60.4486, -8.1600,
-3.0804

■ 64.0498, -10.3606,
-5.9157

■ 67.7290, -12.4466,
-8.8237

Harmonies

Analogous

The Analogous color harmony consists of three colors that are next to each other on the color wheel.



38.2392, 18.2267, 7.4029



38.2383, 11.8047, 13.4476



38.2392, 2.0296, 16.1116

Triad

The Triadic color harmony groups three colors that are evenly spaced from another and form a triangle on the color wheel.



38.2392, 11.8028, 13.4481



38.2392, -19.2602, 5.6856



38.2392, 4.2001, -19.9755

Complementary

The Complementary color scheme is a pair of colors which are on the opposite of each other on the color wheel.



38.2383, 11.8047, 13.4476



42.3367, -10.2435, -11.0429

Split Complementary

Split-complementary colors differ from the complementary color scheme. The scheme consists of three colors, the original color and two neighbors of the complement color.



38.2392, -5.9509, -20.7848



38.2383, 11.8047, 13.4476



38.2392, -18.8088, -4.1352

Square

The Square scheme is like the rectangle color scheme, but the four colors are evenly spaced on the color wheel.



38.2392, 11.8028, 13.4481



38.2392, -15.4656, 12.4733



38.2392, -14.1609, -14.4040



38.2392, 13.5332, -12.4167

Rectangle

The Rectangle color scheme consists of four colors that form a rectangle on the color wheel.



38.2383, 11.8047, 13.4476



38.2392, -4.7581, 16.2295



38.2392, -14.1609, -14.4040



38.2392, 0.7512, -21.1063

Sweetspot

The Sweet Spot groups the original color and five complimentary colors.



38.2392, 11.8028, 13.4481



63.9321, 1.4084, 8.5386



35.2536, 27.8473, -10.1110



30.2212, 1.0306, 4.3848



85.4018, -4.5568, 4.6400



33.5864, -1.7921, 1.8248

Same Dimension

The Same Dimension uses a secret algorithm to generate beautiful new colors.



38.2392, 11.8028, 13.4481



47.2907, 20.6594, 19.9760



47.0648, -4.1272, 20.5430



23.7970, -0.1771, 2.4787



25.7415, 29.4774, 16.3779



3.1226, 1.3853, 1.9484

Inverse Universe

The Inverse Universe completely reimagines the original color for something new.



42.3367, -10.2435, -11.0429



53.6950, -14.2582, -18.5502



32.8839, 5.3537, -27.2167



24.1987, -2.2938, 0.0997



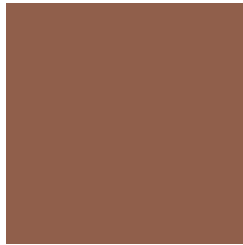
31.8020, -7.5860, -23.3738



3.6700, -1.5162, -1.3141

Previews

White Background



This preview shows how the HunterLab color 38.2383, 11.8047, 13.4476 looks on a white background.

Color Contrast Check

Large Text (above 18pt) WCAG AA ✓ Pass

Any Text WCAG AA ✓ Pass

Large Text (above 18pt) WCAG AAA ✓ Pass

Any Text WCAG AAA × Fail

Black Background



This preview shows how the HunterLab color 38.2383, 11.8047, 13.4476 looks on a black background.

Color Contrast Check

Large Text (above 18pt) WCAG AA ✓ Pass

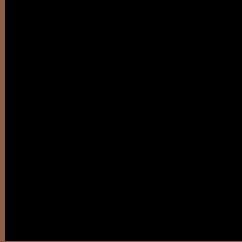
Any Text WCAG AA × Fail

Large Text (above 18pt) WCAG AAA × Fail

Any Text WCAG AAA × Fail

If you want to check with other color combinations, try the [Color Contrast Checker](#).

HunterLab 38.2383, 11.8047, 13.4476 Background



This preview shows how black text looks on a background with the HunterLab color 38.2383, 11.8047, 13.4476.



This preview shows how white text looks on a background with the HunterLab color 38.2383, 11.8047,

Color Blindness Simulation

Color vision deficiency is a very complex topic, and I could not describe the different causes any better than Wikipedia does, so if you want to learn more, you should check out their [article about color blindness](#).

Dichromacy



Original Color

38.2383, 11.8047, 13.4476

Protanopia

38.3919, -3.1361, 11.8814

Deuteranopia

38.4501, 2.2940, 13.7430



Tritanopia

38.2964, 16.5688, 5.6127

Trichromacy



Original Color

38.2383, 11.8047, 13.4476

Protanomaly

38.3225, 2.0092, 12.4980

Deuteranomaly

38.3107, 5.7561, 13.6813

Tritanomaly

38.1924, 14.6579, 8.7745

Monochromacy



Original Color

38.2383, 11.8047, 13.4476

Achromatopsia

38.3441, -2.0459, 2.0833

Achromatomaly

38.1048, 1.9977, 6.6693

CSS Examples

Text

The CSS property to change the color of the text to HunterLab 38.2383, 11.8047, 13.4476 is called "color". The color property can be set on classes, ids or directly on the HTML element.

This example shows how text in the color `rgb(144, 95, 75)` looks like.

```
.text, #text, p{  
    color:rgb(144, 95, 75)  
}
```

If you want to add a text shadow in that color use the text-shadow property, you can generate a text shadow directly with our [CSS Text Shadow Generator](#).

Here you see how black text with a 4 pixel rgb(144, 95, 75) colored shadow looks like.

```
.shadow{ text-shadow: 4px 4px 2px rgb(144, 95, 75) }
```

Border

The CSS property to change the border of an element to HunterLab 38.2383, 11.8047, 13.4476 is called "border". The border property can be set on classes, ids or directly on the HTML element.

This example shows the color as border, it can be applied via the CSS property "border" or "border-color".

```
.border, #border, table{ border:4px solid rgb(144, 95, 75) }
```


If only the border color should be changed use the property `border-color`.

```
.border{ border-color:rgb(144, 95, 75) }
```

If you want to add a box shadow in that color use:

Here you see how a box with a 4 pixel `rgb(144, 95, 75)` colored shadow looks like.

```
.boxshadow{ -moz-box-shadow:4px 4px 4px  
4px rgb(144, 95, 75); -webkit-box-  
shadow:4px 4px 4px 4px rgb(144, 95, 75);  
box-shadow:4px 4px 4px 4px rgb(144, 95,  
75) }
```

Background

The CSS property to change the background color of an element to HunterLab 38.2383, 11.8047, 13.4476 is called "background". The background property can be set on classes, ids or directly on the HTML element.

```
.background, #background, body{  
background: rgb(144, 95, 75) }
```

If only the background color should be changed can be used:

```
.background{ background-color: rgb(144, 95,  
75) }
```

This example shows the color as background, it is applied via the CSS property "background".

To optimize and compress your CSS code, you can use our [online CSS compressor and optimizer](#) based on csstidy. If you want to create a linear or radial gradient as background or border, check our [CSS Gradient Generator](#).

Hey! You found this booklet interesting? Support Converting Colors with the new Membership Option!

The pro membership hides all ads, plus gives you double the colors in the color bucket, and more awesome pro features!

[Learn more, Memberships starting at \\$2.50/m!](#)

**Follow me
on Twitter!**

@ConvertingColor