

Converting Colors

HunterLab(38.4476, 13.0262,
15.2745)

Have a look what the booklet for
HunterLab(38.4476, 13.0262,
15.2745) contains.

HunterLab(38.3810, 13.2429, 15.1846)	3
<i>Conversions</i>	4
<i>Details</i>	6
<i>Harmonies</i>	12
<i>Previews</i>	24
<i>Color Blindness Simulation</i>	28
<i>CSS Examples</i>	31

Color

**HunterLab(38.3810, 13.2429,
15.1846)**

Conversions

Conversions Part 1

Format	Color
Hex	945E45
RGB	148, 94, 69
RGB Percent	58%, 37%, 27%
CMY	0.4196, 0.6314, 0.7294
CMYK	0.00, 0.36, 0.53, 0.42
HSL	19°, 36%, 43%
HSV	19°, 53%, 58%
XYZ	17.2897, 14.7310, 7.5623
YIQ	107.2960, 40.2090, 3.6730

Conversions

Conversions Part 2

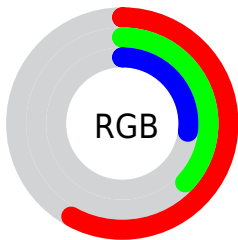
Format	Color
R_{YB}	148, 106, 69
Decimal	9723461
CIE _{Lab}	45.26, 19.23, 23.42
CIE _{LCh}	45, 30.304, 50.600
Yxy	14.7317, 0.4368, 0.3722
Android (android.graphics.Color)	4287913541 (0xFF945E45)
YUV	107.2960, -18.8799, 35.6974
Hunter-Lab	38.3810, 13.2429, 15.1846

Details

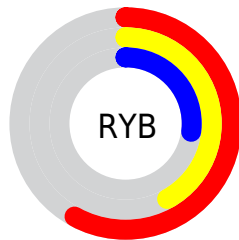
The HunterLab color **38.3810, 13.2429, 15.1846** is a dark color, and the websafe version is hex **996633**. A complement of this color would be **41.9147, -9.9729, -13.9780**, and the grayscale version is **38.5163, -2.0551, 2.0927**.

A 20% lighter version of the original color is **58.6483, 13.9259, 19.0555**, and **21.1729, 11.9131, 10.6798** is the 20% darker color. If you saturate the color by 10%, you get **35.8991, 16.9564, 16.6127**, and if you desaturate by 10%, it is **41.0581, 9.7402, 13.4173**.

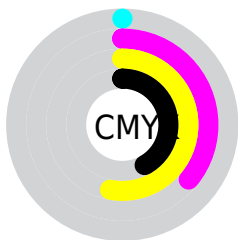
Distribution



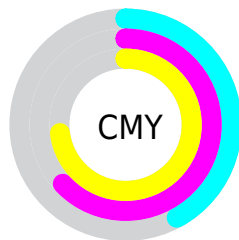
- Red (58%)
- Green (37%)
- Blue (27%)



- Red (58%)
- Yellow (42%)
- Blue (27%)



- Cyan (0%)
- Magenta (36%)
- Yellow (53%)
- Black (42%)



- Cyan (42%)
- Magenta (63%)
- Yellow (73%)

Brightness & Saturation Gradients

These gradients show how the HunterLab color 38.3810, 13.2429, 15.1846 changes by changing the brightness by 10 percent. The first figure shows a shift by +10% for each color and the second figure -10%.

Similar to the brightness gradients but the following saturation gradients show a change of the HunterLab color 38.3810, 13.2429, 15.1846 by changing the saturation by 10% instead.

■ 38.3810, 13.2429,
15.1846

■ 38.3810, 13.2429,
15.1846

148.9083, 15.0715,
31.7442

■ 29.3791, 12.6130,
13.0326

■ 58.6361, 14.1727,
19.1758

■ 21.2168, 11.8532,
10.7163

■ 69.7857, 14.5029,
21.0672

■ 13.9924, 10.9375,
8.9351

■ 81.5642, 14.7555,
22.9118

■ 7.6343, 10.8838,
5.3440

■ 93.9395, 14.9379,
24.7209

0.0000, NaN, NaN

0.0000, NaN, NaN

■ 106.8843, 15.0561,
26.5028

0.0000, NaN, NaN

120.3745, 15.1150,

0.0000, NaN, NaN

28.2641

0.0000, NaN, NaN

134.3888, 15.1189,
30.0099

■ 38.3810, 13.2429,
15.1846

■ 38.3810, 13.2429,
15.1846

■ 35.8991, 16.9564,
16.6127

■ 41.0581, 9.7402,
13.4173

■ 33.6338, 20.8504,
17.6446

■ 43.9056, 6.4671,
11.3618

■ 31.6111, 24.8534,
18.2307

■ 46.9050, 3.4188,
9.0647

■ 29.8550, 28.8535,
18.3427

■ 50.0393, 0.5839,
6.5645

■ 28.8381, 31.3799,
18.3192

■ 53.2942, -2.0540,
3.8931

■ 56.6571, -4.5128,
1.0758

■ 60.1174, -6.8104,
-1.8668

■ 63.6661, -8.9640,
-4.9182

■ 67.2955, -10.9895,
-8.0651

Harmonies

Analogous

The Analogous color harmony consists of three colors that are next to each other on the color wheel.



38.3820, 21.2694, 8.8608



38.3810, 13.2429, 15.1846



38.3820, 1.6803, 17.7355

Triad

The Triadic color harmony groups three colors that are evenly spaced from another and form a triangle on the color wheel.



38.3820, 13.2409, 15.1851



38.3820, -21.7576, 5.4115



38.3820, 6.1605, -23.7134

Complementary

The Complementary color scheme is a pair of colors which are on the opposite of each other on the color wheel.



38.3810, 13.2429, 15.1846



41.9147, -9.9729, -13.9780

Split Complementary

Split-complementary colors differ from the complementary color scheme. The scheme consists of three colors, the original color and two neighbors of the complement color.



38.3820, -5.6431, -25.4669



38.3810, 13.2429, 15.1846



38.3820, -20.8612, -6.1971

Square

The Square scheme is like the rectangle color scheme, but the four colors are evenly spaced on the color wheel.



38.3820, 13.2409, 15.1851



38.3820, -17.8826, 13.3100



38.3820, -15.2681, -18.3132



38.3820, 16.8549, -14.0612

Rectangle

The Rectangle color scheme consists of four colors that form a rectangle on the color wheel.



38.3810, 13.2429, 15.1846



38.3820, -6.0876, 17.6956



38.3820, -15.2681, -18.3132



38.3820, 2.1617, -25.3392

Sweetspot

The Sweet Spot groups the original color and five complimentary colors.



38.3820, 13.2409, 15.1851



65.2265, 1.8552, 9.7222



34.6628, 32.0229, -10.8676



30.7942, 1.2166, 4.9414



86.5109, -4.6160, 4.7003



34.5370, -1.8428, 1.8765

Same Dimension

The Same Dimension uses a secret algorithm to generate beautiful new colors.



38.3820, 13.2409, 15.1851



47.0908, 23.4904, 22.3703



48.2519, -4.6632, 22.7325



24.6925, -0.2597, 2.6278



26.7360, 28.7679, 16.9782



3.6865, 1.4275, 2.2966

Inverse Universe

The Inverse Universe completely reimagines the original color for something new.



41.9147, -9.9729, -13.9780



52.5878, -13.3267, -23.5639



31.4150, 7.7100, -33.3840



25.0115, -2.2995, 0.0351



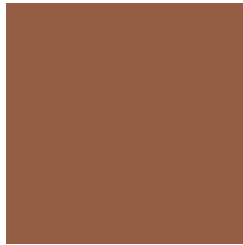
31.3889, -6.1447, -25.9688



4.1677, -1.6591, -1.6278

Previews

White Background



This preview shows how the HunterLab color 38.3810, 13.2429, 15.1846 looks on a white background.

Color Contrast Check

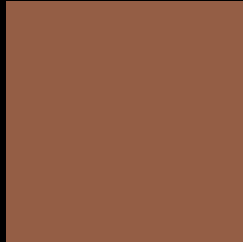
Large Text (above 18pt) WCAG AA ✓ Pass

Any Text WCAG AA ✓ Pass

Large Text (above 18pt) WCAG AAA ✓ Pass

Any Text WCAG AAA × Fail

Black Background



This preview shows how the HunterLab color 38.3810, 13.2429, 15.1846 looks on a black background.

Color Contrast Check

Large Text (above 18pt) WCAG AA ✓ Pass

Any Text WCAG AA × Fail

Large Text (above 18pt) WCAG AAA × Fail

Any Text WCAG AAA × Fail

If you want to check with other color combinations, try the [Color Contrast Checker](#).

HunterLab 38.3810, 13.2429, 15.1846 Background



This preview shows how black text looks on a background with the HunterLab color 38.3810, 13.2429, 15.1846.



This preview shows how white text looks on a background with the HunterLab color 38.3810, 13.2429, 15.1846.

Color Blindness Simulation

Color vision deficiency is a very complex topic, and I could not describe the different causes any better than Wikipedia does, so if you want to learn more, you should check out their [article about color blindness](#).

Dichromacy



Original Color

38.3810, 13.2429, 15.1846

Protanopia

38.3703, -3.4329, 13.5728

Deuteranopia

38.5377, 2.3573, 15.6184



Tritanopia

38.2876, 18.7393, 6.4079

Trichromacy



Original Color

38.3810, 13.2429, 15.1846

Protanomaly

38.1573, 2.5674, 14.0310

Deuteranomaly

38.5358, 6.2913, 15.4415

Tritanomaly

38.1574, 16.7540, 9.7951

Monochromacy



Original Color

38.3810, 13.2429, 15.1846

Achromatopsia

38.3441, -2.0459, 2.0833

Achromatomaly

37.9877, 2.8453, 7.2944

CSS Examples

Text

The CSS property to change the color of the text to HunterLab 38.3810, 13.2429, 15.1846 is called "color". The color property can be set on classes, ids or directly on the HTML element.

This example shows how text in the color `rgb(148, 94, 69)` looks like.

```
.text, #text, p{  
    color:rgb(148, 94, 69)  
}
```

If you want to add a text shadow in that color use the text-shadow property, you can generate a text shadow directly with our [CSS Text Shadow Generator](#).

Here you see how black text with a 4 pixel rgb(148, 94, 69) colored shadow looks like.

```
.shadow{ text-shadow: 4px 4px 2px rgb(148, 94, 69) }
```

Border

The CSS property to change the border of an element to HunterLab 38.3810, 13.2429, 15.1846 is called "border". The border property can be set on classes, ids or directly on the HTML element.

This example shows the color as border, it can be applied via the CSS property "border" or "border-color".

```
.border, #border, table{ border:4px solid rgb(148, 94, 69) }
```


If only the border color should be changed use the property `border-color`.

```
.border{ border-color:rgb(148, 94, 69) }
```

If you want to add a box shadow in that color use:

Here you see how a box with a 4 pixel `rgb(148, 94, 69)` colored shadow looks like.

```
.boxshadow{ -moz-box-shadow:4px 4px 4px  
4px rgb(148, 94, 69); -webkit-box-  
shadow:4px 4px 4px 4px rgb(148, 94, 69);  
box-shadow:4px 4px 4px 4px rgb(148, 94,  
69) }
```

Background

The CSS property to change the background color of an element to HunterLab 38.3810, 13.2429, 15.1846 is called "background". The background property can be set on classes, ids or directly on the HTML element.

```
.background, #background, body{  
background: rgb(148, 94, 69) }
```

If only the background color should be changed can be used:

```
.background{ background-color: rgb(148, 94,  
69) }
```

This example shows the color as background, it is applied via the CSS property "background".

To optimize and compress your CSS code, you can use our [online CSS compressor and optimizer](#) based on csstidy. If you want to create a linear or radial gradient as background or border, check our [CSS Gradient Generator](#).

Hey! You found this booklet interesting? Support Converting Colors with the new Membership Option!

The pro membership hides all ads, plus gives you double the colors in the color bucket, and more awesome pro features!

[Learn more, Memberships starting at \\$2.50/m!](#)

**Follow me
on Twitter!**

@ConvertingColor