

Converting Colors

HunterLab(38.5366, 42.5553,
-2.6628)

Have a look what the booklet for
HunterLab(38.5366, 42.5553,
-2.6628) contains.

HunterLab(38.5167, 42.6961, -2.8716)	3
<i>Conversions</i>	4
<i>Details</i>	6
<i>Harmonies</i>	12
<i>Previews</i>	24
<i>Color Blindness Simulation</i>	28
<i>CSS Examples</i>	31

Color

**HunterLab(38.5167, 42.6961,
-2.8716)**

Conversions

Conversions Part 1

Format	Color
Hex	B24378
RGB	178, 67, 120
RGB Percent	70%, 26%, 47%
CMY	0.3020, 0.7372, 0.5294
CMYK	0.00, 0.62, 0.33, 0.30
HSL	331°, 45%, 48%
HSV	331°, 62%, 70%
XYZ	23.7574, 14.8354, 19.3807
YIQ	106.2310, 49.1430, 40.0150

Conversions

Conversions Part 2

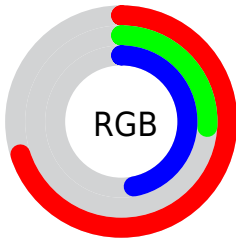
Format	Color
R_{YB}	178, 67, 120
Decimal	11682680
CIE _{Lab}	45.41, 50.27, -6.63
CIE _{LCh}	45, 50.704, 352.490
Yxy	14.8361, 0.4098, 0.2559
Android (android.graphics.Color)	4289872760 (0xFFB24378)
YUV	106.2310, 6.7881, 62.9414
Hunter-Lab	38.5167, 42.6961, -2.8716

Details

The HunterLab color $38.5167, 42.6961, -2.8716$ is a dark color, and the websafe version is hex 993366 . A complement of this color would be $58.7496, -36.1583, 15.9857$, and the grayscale version is $38.0151, -2.0284, 2.0654$.

A 20% lighter version of the original color is $58.8709, 46.1799, -2.2231$, and $21.2904, 38.6581, -3.2776$ is the 20% darker color. If you saturate the color by 10%, you get $35.8050, 48.6128, -1.8456$, and if you desaturate by 10%, it is $41.8623, 35.7961, -3.1423$.

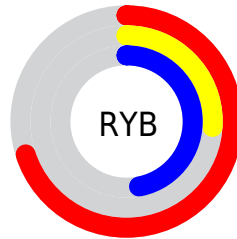
Distribution



Red (70%)

Green (26%)

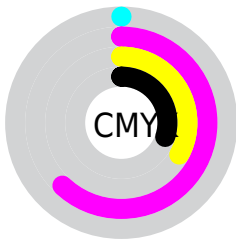
Blue (47%)



Red (70%)

Yellow (26%)

Blue (47%)

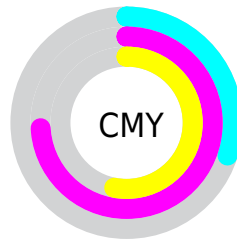


Cyan (0%)

Magenta (62%)

Yellow (33%)

Black (30%)



Cyan (30%)

Magenta (74%)

Yellow (53%)

Brightness & Saturation Gradients

These gradients show how the HunterLab color 38.5167, 42.6961, -2.8716 changes by changing the brightness by 10 percent. The first figure shows a shift by +10% for each color and the second figure -10%.

Similar to the brightness gradients but the following saturation gradients show a change of the HunterLab color 38.5167, 42.6961, -2.8716 by changing the saturation by 10% instead.

38.5167, 42.6961,
-2.8716

38.5167, 42.6961,
-2.8716

149.1215, 55.1167,
0.5983

29.5033, 40.8028,
-2.9932

58.7924, 46.1629,
-2.4332

21.3282, 38.8539,
-3.0398

69.9513, 47.7311,
-2.1315

14.0894, 36.9857,
-2.9974

81.7386, 49.1931,
-1.7808

7.7382, 37.2647,
-3.1898

94.1224, 50.5547,
-1.3847

0.0000, INF, NaN

0.0000, NaN, NaN

107.0752, 51.8222,
-0.9464

0.0000, NaN, NaN

120.5731, 53.0015,

0.0000, NaN, NaN

-0.4684

0.0000, NaN, NaN

134.5948, 54.0979,
0.0472

■ 38.5167, 42.6961,
-2.8716

■ 38.5167, 42.6961,
-2.8716

■ 35.8050, 48.6128,
-1.8456

■ 41.8623, 35.7961,
-3.1423

■ 33.7842, 53.0434,
-0.0404

■ 45.7601, 28.3715,
-2.7577

■ 32.4700, 55.5877,
2.4520

■ 50.1308, 20.7413,
-1.8355

■ 31.8130, 56.5416,
4.5808

■ 54.9023, 13.1028,
-0.4873

■ 60.0132, 5.5607,
1.1941

■ 65.4136, -1.8392,
3.1360

■ 71.0627, -9.0851,
5.2836

■ 76.9280, -16.1832,
7.5956

■ 82.9831, -23.1482,
10.0414

Harmonies

Analogous

The Analogous color harmony consists of three colors that are next to each other on the color wheel.



38.5177, 32.4887, -26.6151



38.5167, 42.6961, -2.8716



38.5177, 39.1442, 13.4117

Triad

The Triadic color harmony groups three colors that are evenly spaced from another and form a triangle on the color wheel.



38.5177, 42.6935, -2.8705



38.5177, -15.3959, 22.6531



38.5177, -22.3604, -38.3703

Complementary

The Complementary color scheme is a pair of colors which are on the opposite of each other on the color wheel.



38.5167, 42.6961, -2.8716



58.7496, -36.1583, 15.9857

Split Complementary

Split-complementary colors differ from the complementary color scheme. The scheme consists of three colors, the original color and two neighbors of the complement color.



38.5177, -30.9764, -14.2253



38.5167, 42.6961, -2.8716



38.5177, -27.5498, 18.1226

Square

The Square scheme is like the rectangle color scheme, but the four colors are evenly spaced on the color wheel.



38.5177, 42.6935, -2.8705



38.5177, 2.9746, 23.3599



38.5177, -32.6661, 6.4794



38.5177, -6.8434, -52.7987

Rectangle

The Rectangle color scheme consists of four colors that form a rectangle on the color wheel.



38.5167, 42.6961, -2.8716



38.5177, 29.7306, 19.2632



38.5177, -32.6661, 6.4794



38.5177, -26.0220, -30.6814

Sweetspot

The Sweet Spot groups the original color and five complimentary colors.



38.5177, 42.6935, -2.8705



75.9722, 14.5524, -0.0132



33.9718, 37.2647, -51.9243



34.8607, 8.2119, -0.2901



95.4677, -5.0939, 5.1869



42.2927, -2.2566, 2.2978

Same Dimension

The Same Dimension uses a secret algorithm to generate beautiful new colors.



38.5177, 42.6935, -2.8705



47.0296, 68.0916, -1.6498



37.5618, 36.4039, 15.3992



29.2756, 1.5678, 0.8354



26.9333, 47.9125, 3.5398



4.8996, 8.9412, -1.1017

Inverse Universe

The Inverse Universe completely reimagines the original color for something new.



38.5177, 42.6935, -2.8705



47.0296, 68.0916, -1.6498



59.5966, -26.7023, -5.6472



29.2756, 1.5678, 0.8354



26.9333, 47.9125, 3.5398



4.8996, 8.9412, -1.1017

Previews

White Background



This preview shows how the HunterLab color 38.5167, 42.6961, -2.8716 looks on a white background.

Color Contrast Check

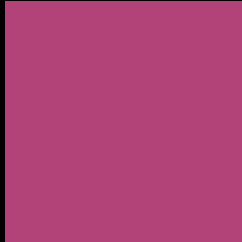
Large Text (above 18pt) WCAG AA ✓ Pass

Any Text WCAG AA ✓ Pass

Large Text (above 18pt) WCAG AAA ✓ Pass

Any Text WCAG AAA × Fail

Black Background



This preview shows how the HunterLab color 38.5167, 42.6961, -2.8716 looks on a black background.

Color Contrast Check

Large Text (above 18pt) WCAG AA ✓ Pass

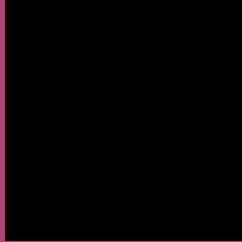
Any Text WCAG AA × Fail

Large Text (above 18pt) WCAG AAA × Fail

Any Text WCAG AAA × Fail

If you want to check with other color combinations, try the [Color Contrast Checker](#).

HunterLab 38.5167, 42.6961, -2.8716 Background



This preview shows how black text looks on a background with the HunterLab color 38.5167, 42.6961, -2.8716.



This preview shows how white text looks on a background with the HunterLab color 38.5167, 42.6961, -2.8716.

-2.8716.

Color Blindness Simulation

Color vision deficiency is a very complex topic, and I could not describe the different causes any better than Wikipedia does, so if you want to learn more, you should check out their [article about color blindness](#).

Dichromacy



Original Color

38.5167, 42.6961, -2.8716

Protanopia

38.9402, 2.6948, -17.9874

Deuteranopia

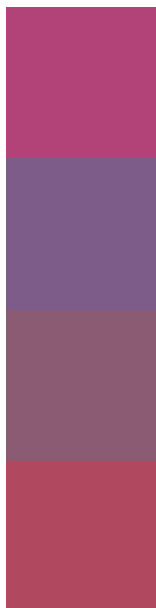
38.7699, 2.5551, -0.4109



Tritanopia

38.5706, 33.1523, 12.3811

Trichromacy



Original Color

38.5167, 42.6961, -2.8716

Protanomaly

37.2774, 15.9124, -14.3937

Deuteranomaly

37.7254, 16.9763, -2.4244

Tritanomaly

38.4986, 36.2660, 7.6842

Monochromacy



Original Color

38.5167, 42.6961, -2.8716

Achromatopsia

37.9643, -2.0257, 2.0627

Achromatomaly

37.0237, 13.3710, -1.0356

CSS Examples

Text

The CSS property to change the color of the text to HunterLab 38.5167, 42.6961, -2.8716 is called "color". The color property can be set on classes, ids or directly on the HTML element.

This example shows how text in the color `rgb(178, 67, 120)` looks like.

```
.text, #text, p{  
    color:rgb(178, 67, 120)  
}
```

If you want to add a text shadow in that color use the text-shadow property, you can generate a text shadow directly with our [CSS Text Shadow Generator](#).

Here you see how black text with a 4 pixel rgb(178, 67, 120) colored shadow looks like.

```
.shadow{ text-shadow: 4px 4px 2px rgb(178, 67, 120) }
```

Border

The CSS property to change the border of an element to HunterLab 38.5167, 42.6961, -2.8716 is called "border". The border property can be set on classes, ids or directly on the HTML element.

This example shows the color as border, it can be applied via the CSS property "border" or "border-color".

```
.border, #border, table{ border:4px solid rgb(178, 67, 120) }
```


If only the border color should be changed use the property `border-color`.

```
.border{ border-color:rgb(178, 67, 120) }
```

If you want to add a box shadow in that color use:

Here you see how a box with a 4 pixel `rgb(178, 67, 120)` colored shadow looks like.

```
.boxshadow{ -moz-box-shadow:4px 4px 4px  
4px rgb(178, 67, 120); -webkit-box-  
shadow:4px 4px 4px 4px rgb(178, 67, 120);  
box-shadow:4px 4px 4px 4px rgb(178, 67,  
120) }
```

Background

The CSS property to change the background color of an element to HunterLab 38.5167, 42.6961, -2.8716 is called "background". The background property can be set on classes, ids or directly on the HTML element.

```
.background, #background, body{  
background: rgb(178, 67, 120) }
```

If only the background color should be changed can be used:

```
.background{ background-color: rgb(178, 67,  
120) }
```

This example shows the color as background, it is applied via the CSS property "background".

To optimize and compress your CSS code, you can use our [online CSS compressor and optimizer](#) based on csstidy. If you want to create a linear or radial gradient as background or border, check our [CSS Gradient Generator](#).

Hey! You found this booklet interesting? Support Converting Colors with the new Membership Option!

The pro membership hides all ads, plus gives you double the colors in the color bucket, and more awesome pro features!

[Learn more, Memberships starting at \\$2.50/m!](#)

**Follow me
on Twitter!**

@ConvertingColor