

# Converting Colors

HunterLab(38.6599, 51.9818,  
-0.4018)

Have a look what the booklet for  
HunterLab(38.6599, 51.9818,  
-0.4018) contains.

<b>HunterLab(38.6984, 52.0088, -0.5587)</b> .....	3
<b><i>Conversions</i></b> .....	4
<b><i>Details</i></b> .....	6
<b><i>Harmonies</i></b> .....	12
<b><i>Previews</i></b> .....	24
<b><i>Color Blindness Simulation</i></b> .....	28
<b><i>CSS Examples</i></b> .....	31

# Color

**HunterLab(38.6984, 52.0088,  
-0.5587)**

# Conversions

## Conversions Part 1

<b>Format</b>	<b>Color</b>
Hex	BF3674
RGB	191, 54, 116
RGB Percent	75%, 21%, 45%
CMY	0.2510, 0.7882, 0.5451
CMYK	0.00, 0.72, 0.39, 0.25
HSL	333°, 56%, 48%
HSV	333°, 72%, 75%
XYZ	25.9574, 14.9757, 18.0455
YIQ	102.0310, 61.7500, 48.3260

# Conversions

## Conversions Part 2

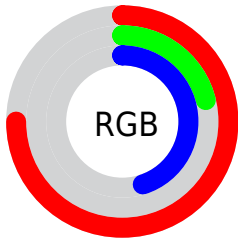
<b>Format</b>	<b>Color</b>
<b>R<sub>YB</sub></b>	191, 54, 116
Decimal	12531316
CIE Lab	45.60, 58.87, -3.65
CIE LCh	46, 58.987, 356.454
Yxy	14.9765, 0.4401, 0.2539
Android (android.graphics.Color)	4290721396 (0xFFBF3674)
YUV	102.0310, 6.8867, 78.0258
Hunter-Lab	38.6984, 52.0088, -0.5587

# Details

The HunterLab color **38.6984, 52.0088, -0.5587** is a dark color, and the websafe version is hex **CC3366**. A complement of this color would be **62.9534, -41.7903, 18.4969**, and the grayscale version is **36.4229, -1.9434, 1.9789**.

A 20% lighter version of the original color is **58.9112, 56.0887, -0.0013**, and **23.2463, 41.6053, 1.1043** is the 20% darker color. If you saturate the color by 10%, you get **36.4749, 56.8593, 1.5080**, and if you desaturate by 10%, it is **41.6821, 45.5552, -1.8157**.

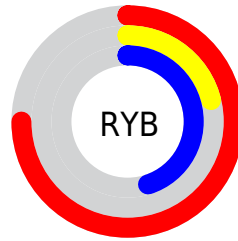
# Distribution



Red (75%)

Green (21%)

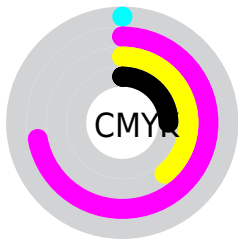
Blue (45%)



Red (75%)

Yellow (21%)

Blue (45%)

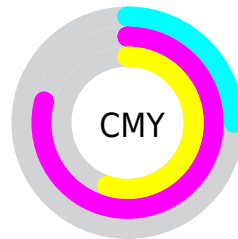


Cyan (0%)

Magenta (72%)

Yellow (39%)

Black (25%)



Cyan (25%)

Magenta (79%)

Yellow (55%)

# Brightness & Saturation Gradients

These gradients show how the HunterLab color 38.6984, 52.0088, -0.5587 changes by changing the brightness by 10 percent. The first figure shows a shift by +10% for each color and the second figure -10%.

Similar to the brightness gradients but the following saturation gradients show a change of the HunterLab color 38.6984, 52.0088, -0.5587 by changing the saturation by 10% instead.



38.6984, 52.0088,  
-0.5587

38.6984, 52.0088,  
-0.5587

149.4068, 66.8910,  
4.0370

29.6696, 49.9008,  
-0.8394

59.0016, 55.9971,  
0.1708

21.4775, 47.8162,  
-1.0562

70.1730, 57.8442,  
0.6070

14.2195, 45.9889,  
-1.1963

81.9721, 59.5879,  
1.0861

7.8751, 46.7272,  
-1.4918

94.3671, 61.2312,  
1.6051

0.0000, INF, NaN

0.0000, NaN, NaN

107.3307, 62.7783,  
2.1616

0.0000, NaN, NaN

120.8388, 64.2341,

0.0000, NaN, NaN

2.7536

0.0000, NaN, NaN

134.8705, 65.6035,  
3.3792

■ 38.6984, 52.0088,  
-0.5587

■ 38.6984, 52.0088,  
-0.5587

■ 36.4749, 56.8593,  
1.5080

■ 41.6821, 45.5552,  
-1.8157

■ 35.0273, 59.6708,  
4.2675

■ 45.3548, 38.0697,  
-2.2824

■ 34.2859, 60.6956,  
6.8064

■ 49.6296, 30.0378,  
-2.0520

■ 54.4181, 21.8034,  
-1.2452

■ 59.6409, 13.5743,  
0.0220

■ 65.2313, 5.4587,  
1.6519

■ 71.1345, -2.4976,  
3.5673

■ 77.3068, -10.2846,  
5.7095

■ 83.7127, -17.9111,  
8.0338

# Harmonies

## Analogous

The Analogous color harmony consists of three colors that are next to each other on the color wheel.



38.6995, 41.5710, -28.6776



38.6984, 52.0088, -0.5587



38.6995, 45.4168, 16.4402

# Triad

The Triadic color harmony groups three colors that are evenly spaced from another and form a triangle on the color wheel.



38.6995, 52.0056, -0.5576



38.6995, -19.6943, 23.9144



38.6995, -23.4006, -51.1210

# Complementary

The Complementary color scheme is a pair of colors which are on the opposite of each other on the color wheel.



38.6984, 52.0088, -0.5587



62.9534, -41.7903, 18.4969

# Split Complementary

Split-complementary colors differ from the complementary color scheme. The scheme consists of three colors, the original color and two neighbors of the complement color.



38.6995, -33.9675, -21.4024



38.6984, 52.0088, -0.5587



38.6995, -32.2005, 18.7715

# Square

The Square scheme is like the rectangle color scheme, but the four colors are evenly spaced on the color wheel.



38.6995, 52.0056, -0.5576



38.6995, 0.6769, 24.8779



38.6995, -36.7726, 4.5937



38.6995, -4.7365, -66.7230



# Rectangle

The Rectangle color scheme consists of four colors that form a rectangle on the color wheel.



38.6984, 52.0088, -0.5587



38.6995, 32.9283, 21.7617



38.6995, -36.7726, 4.5937



38.6995, -27.8346, -41.8388

# Sweetspot

The Sweet Spot groups the original color and five complimentary colors.



38.6995, 52.0056, -0.5576



79.3644, 18.8513, -0.0920



33.0427, 47.4432, -67.2522



36.2712, 10.2461, -0.2822



98.8636, -5.2751, 5.3714



45.2661, -2.4153, 2.4594



# Same Dimension

The Same Dimension uses a secret algorithm to generate beautiful new colors.



38.6995, 52.0056, -0.5576



47.5961, 78.5729, 4.0043



37.9832, 44.8787, 18.7413



30.9939, 1.6526, 0.9697



27.8230, 49.3080, 5.1085



5.6252, 10.1896, -0.6774



# Inverse Universe

The Inverse Universe completely reimagines the original color for something new.



38.6995, 52.0056, -0.5576



47.5961, 78.5729, 4.0043



63.1244, -29.6615, -7.9185



30.9939, 1.6526, 0.9697



27.8230, 49.3080, 5.1085



5.6252, 10.1896, -0.6774



# Previews

## White Background



This preview shows how the HunterLab color 38.6984, 52.0088, -0.5587 looks on a white background.

## Color Contrast Check

Large Text (above 18pt) WCAG AA ✓ Pass

Any Text WCAG AA ✓ Pass

Large Text (above 18pt) WCAG AAA ✓ Pass

Any Text WCAG AAA × Fail



# Black Background



This preview shows how the HunterLab color 38.6984, 52.0088, -0.5587 looks on a black background.

## Color Contrast Check

Large Text (above 18pt) WCAG AA ✓ Pass

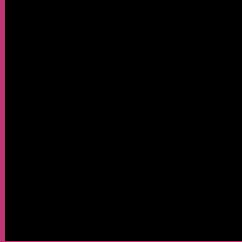
Any Text WCAG AA × Fail

Large Text (above 18pt) WCAG AAA × Fail

Any Text WCAG AAA × Fail

If you want to check with other color combinations, try the [Color Contrast Checker](#).

# HunterLab 38.6984, 52.0088, -0.5587 Background



This preview shows how black text looks on a background with the HunterLab color 38.6984, 52.0088, -0.5587.



This preview shows how white text looks on a background with the HunterLab color 38.6984, 52.0088, -0.5587.

-0.5587.

# Color Blindness Simulation

Color vision deficiency is a very complex topic, and I could not describe the different causes any better than Wikipedia does, so if you want to learn more, you should check out their [article about color blindness](#).

## Dichromacy



### Original Color

38.6984, 52.0088, -0.5587

### Protanopia

38.9926, 3.1153, -19.7925

### Deuteranopia

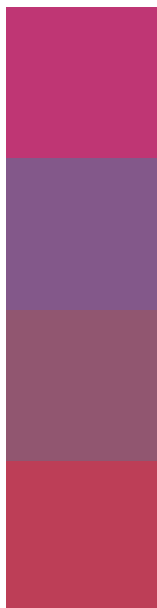
38.8963, 2.6942, 1.9612



## Tritanopia

38.7685, 41.7028, 15.7576

# Trichromacy



## Original Color

38.6984, 52.0088, -0.5587

## Protanomaly

36.9320, 19.6468, -15.4998

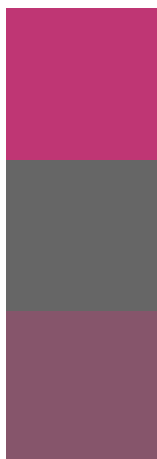
## Deuteranomaly

37.2091, 20.8956, -1.1321

## Tritanomaly

38.6681, 45.1013, 10.7911

# Monochromacy



## Original Color

38.6984, 52.0088, -0.5587

## Achromatopsia

36.4511, -1.9449, 1.9805

## Achromatomaly

35.5343, 16.8511, -1.0180

# CSS Examples

## Text

The CSS property to change the color of the text to HunterLab 38.6984, 52.0088, -0.5587 is called "color". The color property can be set on classes, ids or directly on the HTML element.

This example shows how text in the color `rgb(191, 54, 116)` looks like.

```
.text, #text, p{  
    color:rgb(191, 54, 116)  
}
```

If you want to add a text shadow in that color use the text-shadow property, you can generate a text shadow directly with our [CSS Text Shadow Generator](#).

Here you see how black text with a 4 pixel rgb(191, 54, 116) colored shadow looks like.

```
.shadow{ text-shadow: 4px 4px 2px rgb(191, 54, 116) }
```

## Border

The CSS property to change the border of an element to HunterLab 38.6984, 52.0088, -0.5587 is called "border". The border property can be set on classes, ids or directly on the HTML element.

This example shows the color as border, it can be applied via the CSS property "border" or "border-color".

```
.border, #border, table{ border:4px solid rgb(191, 54, 116) }
```



If only the border color should be changed use the property `border-color`.

```
.border{ border-color:rgb(191, 54, 116) }
```

If you want to add a box shadow in that color use:

Here you see how a box with a 4 pixel `rgb(191, 54, 116)` colored shadow looks like.

```
.boxshadow{ -moz-box-shadow:4px 4px 4px  
4px rgb(191, 54, 116); -webkit-box-  
shadow:4px 4px 4px 4px rgb(191, 54, 116);  
box-shadow:4px 4px 4px 4px rgb(191, 54,  
116) }
```

# Background

The CSS property to change the background color of an element to HunterLab 38.6984, 52.0088, -0.5587 is called "background". The background property can be set on classes, ids or directly on the HTML element.

```
.background, #background, body{  
background: rgb(191, 54, 116) }
```

If only the background color should be changed can be used:

```
.background{ background-color: rgb(191, 54,  
116) }
```

This example shows the color as background, it is applied via the CSS property "background".

To optimize and compress your CSS code, you can use our [online CSS compressor and optimizer](#) based on csstidy. If you want to create a linear or radial gradient as background or border, check our [CSS Gradient Generator](#).

Hey! You found this booklet interesting? Support Converting Colors with the new Membership Option!

The pro membership hides all ads, plus gives you double the colors in the color bucket, and more awesome pro features!

**[Learn more, Memberships starting at \\$2.50/m!](#)**

**Follow me  
on Twitter!**

@ConvertingColor