

Converting Colors

HunterLab(38.6649, 6.0458,
10.7522)

Have a look what the booklet for
HunterLab(38.6649, 6.0458,
10.7522) contains.

HunterLab(38.6649, 6.0458, 10.7522)	3
<i>Conversions</i>	4
<i>Details</i>	6
<i>Harmonies</i>	12
<i>Previews</i>	24
<i>Color Blindness Simulation</i>	28
<i>CSS Examples</i>	31

Color

**HunterLab(38.6649, 6.0458,
10.7522)**

Conversions

Conversions Part 1

Format	Color
Hex	856555
RGB	133, 101, 85
RGB Percent	52%, 40%, 33%
CMY	0.4784, 0.6039, 0.6667
CMYK	0.00, 0.24, 0.36, 0.48
HSL	20°, 22%, 43%
HSV	20°, 36%, 52%
XYZ	15.9662, 14.9497, 10.6384
YIQ	108.7440, 24.2080, 1.8080

Conversions

Conversions Part 2

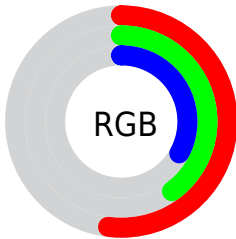
Format	Color
R_{YB}	133, 109, 85
Decimal	8742229
CIE _{Lab}	45.57, 10.51, 14.03
CIE _{LCh}	46, 17.533, 53.158
Yxy	14.9504, 0.3842, 0.3598
Android (android.graphics.Color)	4286932309 (0xFF856555)
YUV	108.7440, -11.7058, 21.2725
Hunter-Lab	38.6649, 6.0458, 10.7522

Details

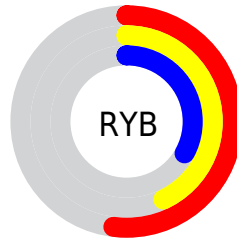
The HunterLab color **38.6649, 6.0458, 10.7522** is a dark color, and the websafe version is hex **996666**. A complement of this color would be **40.4311, -7.4401, -7.7577**, and the grayscale version is **39.0455, -2.0834, 2.1214**.

A 20% lighter version of the original color is **58.9665, 6.0729, 13.3938**, and **21.4135, 5.7216, 7.7367** is the 20% darker color. If you saturate the color by 10%, you get **36.2335, 8.8706, 12.5336**, and if you desaturate by 10%, it is **41.2283, 3.4163, 8.7397**.

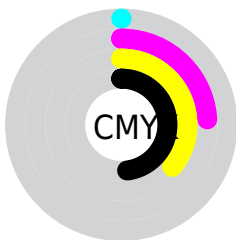
Distribution



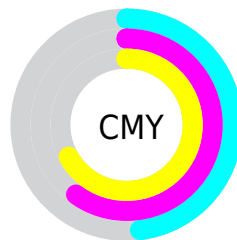
- Red (52%)
- Green (40%)
- Blue (33%)



- Red (52%)
- Yellow (43%)
- Blue (33%)



- Cyan (0%)
- Magenta (24%)
- Yellow (36%)
- Black (48%)



- Cyan (48%)
- Magenta (60%)
- Yellow (67%)

Brightness & Saturation Gradients

These gradients show how the HunterLab color 38.6649, 6.0458, 10.7522 changes by changing the brightness by 10 percent. The first figure shows a shift by +10% for each color and the second figure -10%.

Similar to the brightness gradients but the following saturation gradients show a change of the HunterLab color 38.6649, 6.0458, 10.7522 by changing the saturation by 10% instead.

■ 38.6649, 6.0458,
10.7522

■ 38.6649, 6.0458,
10.7522

149.3540, 4.4536,
22.8424

■ 29.6389, 5.8950,
9.3182

■ 58.9629, 6.0957,
13.5044

■ 21.4499, 5.6438,
7.8127

■ 70.1320, 6.0178,
14.8485

■ 14.1954, 5.2669,
6.1972

■ 81.9289, 5.8804,
16.1823

■ 7.8500, 5.4164,
5.4950

■ 94.3218, 5.6886,
17.5113

0.0000, NaN, NaN

0.0000, NaN, NaN

■ 107.2834, 5.4467,
18.8392

0.0000, NaN, NaN

120.7897, 5.1583,

0.0000, NaN, NaN

134.8195, 4.8265,
21.5028

■ 38.6649, 6.0458,
10.7522

■ 38.6649, 6.0458,
10.7522

■ 36.2335, 8.8706,
12.5336

■ 41.2283, 3.4163,
8.7397

■ 33.9475, 11.8968,
14.0415

■ 43.9069, 0.9775,
6.5295

■ 31.8256, 15.1115,
15.2314

■ 46.6895, -1.2856,
4.1513

■ 29.8875, 18.4834,
16.0574

■ 49.5655, -3.3882,
1.6293

■ 28.1532, 21.9542,
16.4813

■ 52.5260, -5.3456,
-1.0169

■ 26.6387, 25.4188,
16.5272

■ 55.5632, -7.1726,
-3.7713

■ 26.1026, 26.7139,
16.5520

■ 58.6704, -8.8831,
-6.6210

■ 61.8419, -10.4896,
-9.5551

■ 65.0728, -12.0032,
-12.5650

Harmonies

Analogous

The Analogous color harmony consists of three colors that are next to each other on the color wheel.



38.6658, 10.6307, 6.6600



38.6649, 6.0458, 10.7522



38.6658, -0.5040, 12.4817

Triad

The Triadic color harmony groups three colors that are evenly spaced from another and form a triangle on the color wheel.



38.6658, 6.0442, 10.7528



38.6658, -14.1469, 3.5493



38.6658, 3.1825, -11.0823

Complementary

The Complementary color scheme is a pair of colors which are on the opposite of each other on the color wheel.



38.6649, 6.0458, 10.7522



40.4311, -7.4401, -7.7577

Split Complementary

Split-complementary colors differ from the complementary color scheme. The scheme consists of three colors, the original color and two neighbors of the complement color.



38.6658, -3.6020, -12.3006



38.6649, 6.0458, 10.7522



38.6658, -13.3086, -3.0826

Square

The Square scheme is like the rectangle color scheme, but the four colors are evenly spaced on the color wheel.



38.6658, 6.0442, 10.7528



38.6658, -11.9307, 8.8110



38.6658, -9.5569, -9.1605



38.6658, 8.9008, -6.0707

Rectangle

The Rectangle color scheme consists of four colors that form a rectangle on the color wheel.



38.6649, 6.0458, 10.7522



38.6658, -4.9809, 12.3157



38.6658, -9.5569, -9.1605



38.6658, 0.9396, -11.9808

Sweetspot

The Sweet Spot groups the original color and five complimentary colors.



38.6658, 6.0442, 10.7528



60.5423, -0.1857, 7.2236



35.7323, 18.0568, -5.5909



28.5388, 0.0736, 3.5971



82.0889, -4.3801, 4.4600



30.7619, -1.6414, 1.6714

Same Dimension

The Same Dimension uses a secret algorithm to generate beautiful new colors.



38.6658, 6.0442, 10.7528



49.1600, 11.0494, 16.2977



45.0662, -5.0114, 16.3748



22.1895, -0.2985, 2.3670



25.5023, 25.9983, 16.1696



1.8684, 0.6612, 1.1629

Inverse Universe

The Inverse Universe completely reimagines the original color for something new.



40.4311, -7.4401, -7.7577



51.9867, -10.6844, -13.4740



33.8431, 3.5096, -17.9598



22.4148, -2.0021, 0.0201



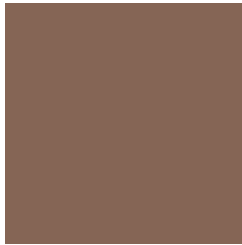
28.9476, -4.9295, -25.5407



2.0613, -0.7997, -0.8501

Previews

White Background



This preview shows how the HunterLab color 38.6649, 6.0458, 10.7522 looks on a white background.

Color Contrast Check

Large Text (above 18pt) WCAG AA ✓ Pass

Any Text WCAG AA ✓ Pass

Large Text (above 18pt) WCAG AAA ✓ Pass

Any Text WCAG AAA × Fail

Black Background



This preview shows how the HunterLab color 38.6649, 6.0458, 10.7522 looks on a black background.

Color Contrast Check

Large Text (above 18pt) WCAG AA ✓ Pass

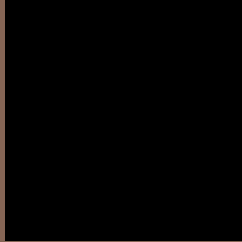
Any Text WCAG AA × Fail

Large Text (above 18pt) WCAG AAA × Fail

Any Text WCAG AAA × Fail

If you want to check with other color combinations, try the [Color Contrast Checker](#).

HunterLab 38.6649, 6.0458, 10.7522 Background



This preview shows how black text looks on a background with the HunterLab color 38.6649, 6.0458, 10.7522.



This preview shows how white text looks on a background with the HunterLab color 38.6649, 6.0458,

Color Blindness Simulation

Color vision deficiency is a very complex topic, and I could not describe the different causes any better than Wikipedia does, so if you want to learn more, you should check out their [article about color blindness](#).

Dichromacy



Original Color

38.6649, 6.0458, 10.7522

Protanopia

38.7390, -2.9923, 9.6881

Deuteranopia

38.6993, 2.1773, 11.0342



Tritanopia

38.6353, 10.7496, 3.0697

Trichromacy



Original Color

38.6649, 6.0458, 10.7522

Protanomaly

38.5438, 0.4266, 9.8878

Deuteranomaly

38.7398, 3.6414, 11.0982

Tritanomaly

38.5666, 8.8668, 6.1554

Monochromacy



Original Color

38.6649, 6.0458, 10.7522

Achromatopsia

39.1058, -2.0866, 2.1247

Achromatomaly

38.8326, 0.6502, 5.5317

CSS Examples

Text

The CSS property to change the color of the text to HunterLab 38.6649, 6.0458, 10.7522 is called "color". The color property can be set on classes, ids or directly on the HTML element.

This example shows how text in the color `rgb(133, 101, 85)` looks like.

```
.text, #text, p{  
    color:rgb(133, 101, 85)  
}
```

If you want to add a text shadow in that color use the text-shadow property, you can generate a text shadow directly with our [CSS Text Shadow Generator](#).

Here you see how black text with a 4 pixel rgb(133, 101, 85) colored shadow looks like.

```
.shadow{ text-shadow: 4px 4px 2px rgb(133, 101, 85) }
```

Border

The CSS property to change the border of an element to HunterLab 38.6649, 6.0458, 10.7522 is called "border". The border property can be set on classes, ids or directly on the HTML element.

This example shows the color as border, it can be applied via the CSS property "border" or "border-color".

```
.border, #border, table{ border:4px solid rgb(133, 101, 85) }
```


If only the border color should be changed use the property border-color.

```
.border{ border-color:rgb(133, 101, 85) }
```

If you want to add a box shadow in that color use:

Here you see how a box with a 4 pixel rgb(133, 101, 85) colored shadow looks like.

```
.boxshadow{ -moz-box-shadow:4px 4px 4px  
4px rgb(133, 101, 85); -webkit-box-  
shadow:4px 4px 4px 4px rgb(133, 101, 85);  
box-shadow:4px 4px 4px 4px rgb(133, 101,  
85) }
```

Background

The CSS property to change the background color of an element to HunterLab 38.6649, 6.0458, 10.7522 is called "background". The background property can be set on classes, ids or directly on the HTML element.

```
.background, #background, body{  
background: rgb(133, 101, 85) }
```

If only the background color should be changed can be used:

```
.background{ background-color: rgb(133,  
101, 85) }
```

This example shows the color as background, it is applied via the CSS property "background".

To optimize and compress your CSS code, you can use our [online CSS compressor and optimizer](#) based on csstidy. If you want to create a linear or radial gradient as background or border, check our [CSS Gradient Generator](#).

Hey! You found this booklet interesting? Support Converting Colors with the new Membership Option!

The pro membership hides all ads, plus gives you double the colors in the color bucket, and more awesome pro features!

[Learn more, Memberships starting at \\$2.50/m!](#)

**Follow me
on Twitter!**

@ConvertingColor