

Converting Colors

HunterLab(38.9280, 3.3150,
9.5665)

Have a look what the booklet for
HunterLab(38.9280, 3.3150, 9.5665)
contains.

HunterLab(39.0014, 3.3993, 9.7243)	3
<i>Conversions</i>	4
<i>Details</i>	6
<i>Harmonies</i>	12
<i>Previews</i>	24
<i>Color Blindness Simulation</i>	28
<i>CSS Examples</i>	31

Color

**HunterLab(39.0014, 3.3993,
9.7243)**

Conversions

Conversions Part 1

Format	Color
Hex	806859
RGB	128, 104, 89
RGB Percent	50%, 41%, 35%
CMY	0.4980, 0.5921, 0.6510
CMYK	0.00, 0.19, 0.30, 0.50
HSL	23°, 18%, 43%
HSV	23°, 30%, 50%
XYZ	15.6556, 15.2111, 11.5621
YIQ	109.4660, 19.1190, 0.4230

Conversions

Conversions Part 2

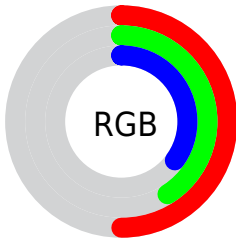
Format	Color
R_{YB}	128, 113, 89
Decimal	8415321
CIE Lab	45.92, 7.17, 12.05
CIE LCh	46, 14.028, 59.238
Yxy	15.2118, 0.3690, 0.3585
Android (android.graphics.Color)	4286605401 (0xFF806859)
YUV	109.4660, -10.0897, 16.2543
Hunter-Lab	39.0014, 3.3993, 9.7243

Details

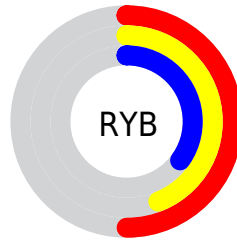
The HunterLab color **39.0014, 3.3993, 9.7243** is a dark color, and the websafe version is hex **996666**. A complement of this color would be **39.3600, -5.7473, -6.6100**, and the grayscale version is **39.3165, -2.0978, 2.1361**.

A 20% lighter version of the original color is **59.2710, 2.9993, 12.1411**, and **21.7264, 3.3951, 7.2102** is the 20% darker color. If you saturate the color by 10%, you get **36.7462, 5.6837, 11.6509**, and if you desaturate by 10%, it is **41.3598, 1.2969, 7.5627**.

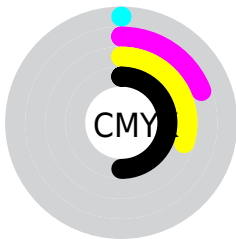
Distribution



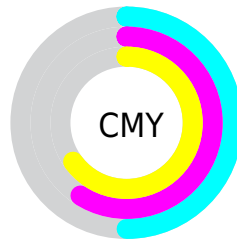
- Red (50%)
- Green (41%)
- Blue (35%)



- Red (50%)
- Yellow (44%)
- Blue (35%)



- Cyan (0%)
- Magenta (19%)
- Yellow (30%)
- Black (50%)



- Cyan (50%)
- Magenta (59%)
- Yellow (65%)

Brightness & Saturation Gradients

These gradients show how the HunterLab color 39.0014, 3.3993, 9.7243 changes by changing the brightness by 10 percent. The first figure shows a shift by +10% for each color and the second figure -10%.

Similar to the brightness gradients but the following saturation gradients show a change of the HunterLab color 39.0014, 3.3993, 9.7243 by changing the saturation by 10% instead.

39.0014, 3.3993,
9.7243

39.0014, 3.3993,
9.7243

149.8815, 0.4451,
20.9117

29.9469, 3.4453,
8.4353

59.3501, 3.0935,
12.2268

21.7265, 3.4070,
7.0948

70.5422, 2.8524,
13.4606

14.4367, 3.2637,
5.6661

82.3609, 2.5597,
14.6914

8.0976, 3.4285,
5.6683

94.7745, 2.2194,
15.9234

0.0000, NaN, NaN

0.0000, NaN, NaN

107.7559, 1.8352,
17.1595

0.0000, NaN, NaN

121.2812, 1.4098,

0.0000, NaN, NaN

18.4019

0.0000, NaN, NaN

135.3293, 0.9457,
19.6522

■ 39.0014, 3.3993,
9.7243

■ 39.0014, 3.3993,
9.7243

■ 36.7462, 5.6837,
11.6509

■ 41.3598, 1.2969,
7.5627

■ 34.6026, 8.1627,
13.3061

■ 43.8087, -0.6312,
5.1949

■ 32.5840, 10.8364,
14.6525

■ 46.3404, -2.3999,
2.6476

■ 30.7041, 13.6965,
15.6510

■ 48.9474, -4.0231,
-0.0569

■ 28.9774, 16.7187,
16.2666

■ 51.6230, -5.5143,
-2.9000

■ 27.4182, 19.8576,
16.4765

■ 54.3616, -6.8864,
-5.8658

■ 26.0883, 22.8389,
16.4753

■ 57.1582, -8.1511,
-8.9413

■ 60.0084, -9.3191,
-12.1153

■ 62.9083, -10.4000,
-15.3783

Harmonies

Analogous

The Analogous color harmony consists of three colors that are next to each other on the color wheel.



39.0023, 7.4448, 6.6663



39.0014, 3.3993, 9.7243



39.0023, -1.9444, 10.8003

Triad

The Triadic color harmony groups three colors that are evenly spaced from another and form a triangle on the color wheel.



39.0023, 3.3979, 9.7249



39.0023, -11.9769, 2.2547



39.0023, 3.1449, -7.5684

Complementary

The Complementary color scheme is a pair of colors which are on the opposite of each other on the color wheel.



39.0014, 3.3993, 9.7243



39.3600, -5.7473, -6.6100

Split Complementary

Split-complementary colors differ from the complementary color scheme. The scheme consists of three colors, the original color and two neighbors of the complement color.



39.0023, -2.2217, -9.1620



39.0014, 3.3993, 9.7243



39.0023, -10.7761, -3.0426

Square

The Square scheme is like the rectangle color scheme, but the four colors are evenly spaced on the color wheel.



39.0023, 3.3979, 9.7249



39.0023, -10.6498, 6.8658



39.0023, -7.2773, -7.4047



39.0023, 7.2933, -3.3021

Rectangle

The Rectangle color scheme consists of four colors that form a rectangle on the color wheel.



39.0014, 3.3993, 9.7243



39.0023, -5.4618, 10.3793



39.0023, -7.2773, -7.4047



39.0023, 1.4145, -8.4583

Sweetspot

The Sweet Spot groups the original color and five complimentary colors.



39.0023, 3.3979, 9.7249



58.5474, -1.1448, 6.4793



35.9548, 13.8214, -3.3896



28.1280, -0.4060, 3.3343



80.9895, -4.3214, 4.4003



29.8298, -1.5916, 1.6207

Same Dimension

The Same Dimension uses a secret algorithm to generate beautiful new colors.



39.0023, 3.3979, 9.7249



49.5280, 6.7236, 14.8235



44.2587, -5.4851, 14.5147



21.4347, -0.4288, 2.3571



25.9830, 22.7298, 16.4085

0.0000, NaN, NaN

Inverse Universe

The Inverse Universe completely reimagines the original color for something new.



39.3600, -5.7473, -6.6100



50.1054, -8.1886, -11.8160



34.0707, 3.1358, -14.4895



21.4886, -1.7881, -0.0706

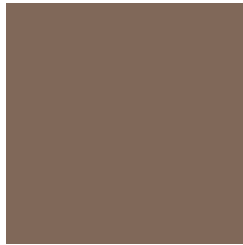


26.5681, -2.0167, -28.8544

0.0000, NaN, NaN

Previews

White Background



This preview shows how the HunterLab color 39.0014, 3.3993, 9.7243 looks on a white background.

Color Contrast Check

Large Text (above 18pt) WCAG AA ✓ Pass

Any Text WCAG AA ✓ Pass

Large Text (above 18pt) WCAG AAA ✓ Pass

Any Text WCAG AAA × Fail

Black Background



This preview shows how the HunterLab color 39.0014, 3.3993, 9.7243 looks on a black background.

Color Contrast Check

Large Text (above 18pt) WCAG AA ✓ Pass

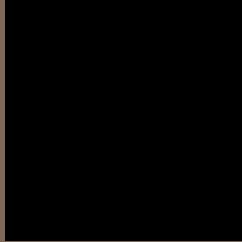
Any Text WCAG AA × Fail

Large Text (above 18pt) WCAG AAA × Fail

Any Text WCAG AAA × Fail

If you want to check with other color combinations, try the [Color Contrast Checker](#).

HunterLab 39.0014, 3.3993, 9.7243 Background



This preview shows how black text looks on a background with the HunterLab color 39.0014, 3.3993, 9.7243.



This preview shows how white text looks on a background with the HunterLab color 39.0014, 3.3993,

Color Blindness Simulation

Color vision deficiency is a very complex topic, and I could not describe the different causes any better than Wikipedia does, so if you want to learn more, you should check out their [article about color blindness](#).

Dichromacy



Original Color

39.0014, 3.3993, 9.7243

Protanopia

39.1631, -2.7781, 9.0993

Deuteranopia

39.0641, 2.2761, 9.7663



Tritanopia

38.9324, 8.0685, 2.0980

Trichromacy



Original Color

39.0014, 3.3993, 9.7243

Protanomaly

39.0470, -0.4517, 9.3651

Deuteranomaly

39.1618, 2.6045, 9.8680

Tritanomaly

38.8962, 6.2888, 4.9166

Monochromacy



Original Color

39.0014, 3.3993, 9.7243

Achromatopsia

39.1058, -2.0866, 2.1247

Achromatomaly

38.9714, -0.1442, 4.8873

CSS Examples

Text

The CSS property to change the color of the text to HunterLab 39.0014, 3.3993, 9.7243 is called "color". The color property can be set on classes, ids or directly on the HTML element.

This example shows how text in the color `rgb(128, 104, 89)` looks like.

```
.text, #text, p{  
    color:rgb(128, 104, 89)  
}
```

If you want to add a text shadow in that color use the text-shadow property, you can generate a text shadow directly with our [CSS Text Shadow Generator](#).

Here you see how black text with a 4 pixel rgb(128, 104, 89) colored shadow looks like.

```
.shadow{ text-shadow: 4px 4px 2px rgb(128, 104, 89) }
```

Border

The CSS property to change the border of an element to HunterLab 39.0014, 3.3993, 9.7243 is called "border". The border property can be set on classes, ids or directly on the HTML element.

This example shows the color as border, it can be applied via the CSS property "border" or "border-color".

```
.border, #border, table{ border:4px solid rgb(128, 104, 89) }
```


If only the border color should be changed use the property `border-color`.

```
.border{ border-color:rgb(128, 104, 89) }
```

If you want to add a box shadow in that color use:

Here you see how a box with a 4 pixel `rgb(128, 104, 89)` colored shadow looks like.

```
.boxshadow{ -moz-box-shadow:4px 4px 4px  
4px rgb(128, 104, 89); -webkit-box-  
shadow:4px 4px 4px 4px rgb(128, 104, 89);  
box-shadow:4px 4px 4px 4px rgb(128, 104,  
89) }
```

Background

The CSS property to change the background color of an element to HunterLab 39.0014, 3.3993, 9.7243 is called "background". The background property can be set on classes, ids or directly on the HTML element.

```
.background, #background, body{  
background: rgb(128, 104, 89) }
```

If only the background color should be changed can be used:

```
.background{ background-color: rgb(128,  
104, 89) }
```

This example shows the color as background, it is applied via the CSS property "background".

To optimize and compress your CSS code, you can use our [online CSS compressor and optimizer](#) based on csstidy. If you want to create a linear or radial gradient as background or border, check our [CSS Gradient Generator](#).

Hey! You found this booklet interesting? Support Converting Colors with the new Membership Option!

The pro membership hides all ads, plus gives you double the colors in the color bucket, and more awesome pro features!

[Learn more, Memberships starting at \\$2.50/m!](#)

**Follow me
on Twitter!**

@ConvertingColor