

Converting Colors

HunterLab(39.2285, 58.3605,
2.0255)

Have a look what the booklet for
HunterLab(39.2285, 58.3605,
2.0255) contains.

HunterLab(39.2285, 58.3605, 2.0255)	3
<i>Conversions</i>	4
<i>Details</i>	6
<i>Harmonies</i>	12
<i>Previews</i>	24
<i>Color Blindness Simulation</i>	28
<i>CSS Examples</i>	31

Color

**HunterLab(39.2285, 58.3605,
2.0255)**

Conversions

Conversions Part 1

Format	Color
Hex	C92C70
RGB	201, 44, 112
RGB Percent	79%, 17%, 44%
CMY	0.2118, 0.8274, 0.5608
CMYK	0.00, 0.78, 0.44, 0.21
HSL	334°, 64%, 48%
HSV	334°, 78%, 79%
XYZ	27.9128, 15.3888, 16.8284
YIQ	98.6950, 71.7440, 54.4320

Conversions

Conversions Part 2

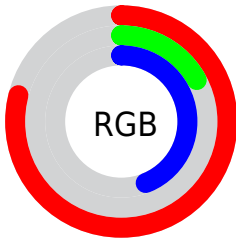
Format	Color
R_{YB}	201, 44, 112
Decimal	13184112
CIE _{Lab}	46.16, 64.40, -0.15
CIE _{LCh}	46, 64.403, 359.864
Yxy	15.3896, 0.4642, 0.2559
Android (android.graphics.Color)	4291374192 (0xFFC92C70)
YUV	98.6950, 6.5594, 89.7215
Hunter-Lab	39.2285, 58.3605, 2.0255

Details

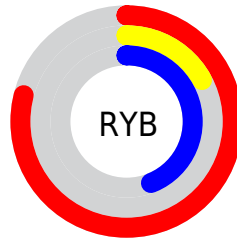
The HunterLab color **39.2285, 58.3605, 2.0255** is a dark color, and the websafe version is hex **CC0066**. The color can be described as dark muted rose. A complement of this color would be **66.3346, -45.6907, 20.2377**, and the grayscale version is **35.1683, -1.8765, 1.9108**.

A 20% lighter version of the original color is **58.3468, 60.0125, 1.3139**, and **24.5853, 43.6554, 3.8531** is the 20% darker color. If you saturate the color by 10%, you get **37.4153, 62.1029, 4.7926**, and if you desaturate by 10%, it is **41.8771, 52.5734, 0.0100**.

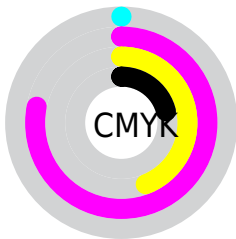
Distribution



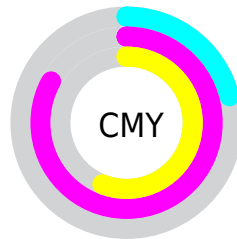
- Red (79%)
- Green (17%)
- Blue (44%)



- Red (79%)
- Yellow (17%)
- Blue (44%)



- Cyan (0%)
- Magenta (78%)
- Yellow (44%)
- Black (21%)



- Cyan (21%)
- Magenta (83%)
- Yellow (56%)

Brightness & Saturation Gradients

These gradients show how the HunterLab color 39.2285, 58.3605, 2.0255 changes by changing the brightness by 10 percent. The first figure shows a shift by +10% for each color and the second figure -10%.

Similar to the brightness gradients but the following saturation gradients show a change of the HunterLab color 39.2285, 58.3605, 2.0255 by changing the saturation by 10% instead.

39.2285, 58.3605,
2.0255

39.2285, 58.3605,
2.0255

150.2373, 74.6764,
8.0078

30.1551, 56.1476,
1.5418

59.6115, 62.6334,
3.1198

21.9137, 54.0159,
1.1032

70.8190, 64.6399,
3.7225

14.6000, 52.2617,
0.7164

82.6524, 66.5476,
4.3596

8.2602, 52.7651,
0.3727

95.0800, 68.3568,
5.0295

0.0000, INF, NaN

0.0000, INF, NaN

108.0747, 70.0703,
5.7304

0.0000, NaN, NaN

121.6128, 71.6920,

0.0000, NaN, NaN

6.4613

0.0000, NaN, NaN

135.6732, 73.2259,
7.2207

■ 39.2285, 58.3605,
2.0255

■ 39.2285, 58.3605,
2.0255

■ 37.4153, 62.1029,
4.7926

■ 41.8771, 52.5734,
0.0100

■ 36.3663, 63.6866,
8.0393

■ 45.3150, 45.3027,
-1.1736

■ 36.2028, 63.9013,
8.6425

■ 49.4592, 37.1348,
-1.5635

■ 54.2130, 28.5403,
-1.2651

■ 59.4837, 19.8300,
-0.4013

■ 65.1908, 11.1813,
0.9141

■ 71.2674, 2.6803,
2.5866

■ 77.6593, -5.6422,
4.5421

■ 84.3231, -13.7851,
6.7240

Harmonies

Analogous

The Analogous color harmony consists of three colors that are next to each other on the color wheel.



39.2296, 48.6360, -28.3960



39.2285, 58.3605, 2.0255



39.2296, 48.8026, 18.7447

Triad

The Triadic color harmony groups three colors that are evenly spaced from another and form a triangle on the color wheel.



39.2296, 58.3569, 2.0266



39.2296, -23.2466, 24.6793



39.2296, -23.3997, -61.4207

Complementary

The Complementary color scheme is a pair of colors which are on the opposite of each other on the color wheel.



39.2285, 58.3605, 2.0255



66.3346, -45.6907, 20.2377

Split Complementary

Split-complementary colors differ from the complementary color scheme. The scheme consists of three colors, the original color and two neighbors of the complement color.



39.2296, -35.6425, -28.0779



39.2285, 58.3605, 2.0255



39.2296, -35.5709, 18.8368

Square

The Square scheme is like the rectangle color scheme, but the four colors are evenly spaced on the color wheel.



39.2296, 58.3569, 2.0266



39.2296, -1.9811, 25.8508



39.2296, -39.4765, 2.2438



39.2296, -2.2094, -76.4469

Rectangle

The Rectangle color scheme consists of four colors that form a rectangle on the color wheel.



39.2285, 58.3605, 2.0255



39.2296, 33.8819, 23.4595



39.2296, -39.4765, 2.2438



39.2296, -28.4860, -51.2575

Sweetspot

The Sweet Spot groups the original color and five complimentary colors.



39.2296, 58.3569, 2.0266



81.3379, 20.5170, 0.2324



33.1716, 55.5565, -77.3544



36.3830, 11.4156, -0.1663

0.0000, NaN, NaN



46.2646, -2.4686, 2.5136

Same Dimension

The Same Dimension uses a secret algorithm to generate beautiful new colors.



39.2296, 58.3569, 2.0266



47.9006, 82.9384, 9.3230



39.0928, 49.7743, 21.3444



32.7291, 1.7424, 1.0945



28.7376, 50.7826, 6.4093



6.3680, 11.4678, -0.2453

Inverse Universe

The Inverse Universe completely reimagines the original color for something new.



39.2296, 58.3569, 2.0266



47.9006, 82.9384, 9.3230



64.6618, -30.0357, -11.3492



32.7291, 1.7424, 1.0945



28.7376, 50.7826, 6.4093



6.3680, 11.4678, -0.2453

Previews

White Background



This preview shows how the HunterLab color 39.2285, 58.3605, 2.0255 looks on a white background.

Color Contrast Check

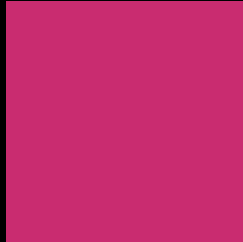
Large Text (above 18pt) WCAG AA ✓ Pass

Any Text WCAG AA ✓ Pass

Large Text (above 18pt) WCAG AAA ✓ Pass

Any Text WCAG AAA × Fail

Black Background



This preview shows how the HunterLab color 39.2285, 58.3605, 2.0255 looks on a black background.

Color Contrast Check

Large Text (above 18pt) WCAG AA ✓ Pass

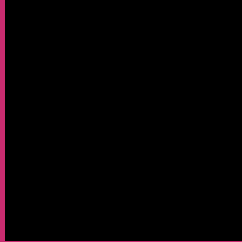
Any Text WCAG AA × Fail

Large Text (above 18pt) WCAG AAA × Fail

Any Text WCAG AAA × Fail

If you want to check with other color combinations, try the [Color Contrast Checker](#).

HunterLab 39.2285, 58.3605, 2.0255 Background



This preview shows how black text looks on a background with the HunterLab color 39.2285, 58.3605, 2.0255.



This preview shows how white text looks on a background with the HunterLab color 39.2285, 58.3605,

Color Blindness Simulation

Color vision deficiency is a very complex topic, and I could not describe the different causes any better than Wikipedia does, so if you want to learn more, you should check out their [article about color blindness](#).

Dichromacy



Original Color

39.2285, 58.3605, 2.0255

Protanopia

39.7093, 2.8429, -19.1967

Deuteranopia

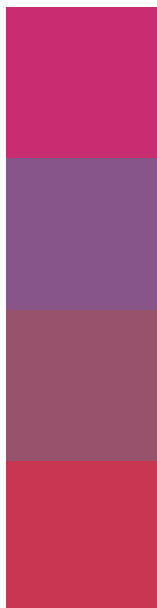
39.3935, 2.7499, 4.6108



Tritanopia

39.2031, 48.1576, 18.3228

Trichromacy



Original Color

39.2285, 58.3605, 2.0255

Protanomaly

36.6797, 22.2168, -15.2649

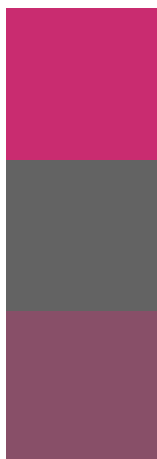
Deuteranomaly

37.1852, 23.7776, 1.1509

Tritanomaly

39.0737, 51.6497, 13.4651

Monochromacy



Original Color

39.2285, 58.3605, 2.0255

Achromatopsia

35.3231, -1.8847, 1.9192

Achromatomaly

34.3885, 20.0060, -1.0401

CSS Examples

Text

The CSS property to change the color of the text to HunterLab 39.2285, 58.3605, 2.0255 is called "color". The color property can be set on classes, ids or directly on the HTML element.

This example shows how text in the color `rgb(201, 44, 112)` looks like.

```
.text, #text, p{  
    color:rgb(201, 44, 112)  
}
```

If you want to add a text shadow in that color use the text-shadow property, you can generate a text shadow directly with our [CSS Text Shadow Generator](#).

Here you see how black text with a 4 pixel rgb(201, 44, 112) colored shadow looks like.

```
.shadow{ text-shadow: 4px 4px 2px rgb(201, 44, 112) }
```

Border

The CSS property to change the border of an element to HunterLab 39.2285, 58.3605, 2.0255 is called "border". The border property can be set on classes, ids or directly on the HTML element.

This example shows the color as border, it can be applied via the CSS property "border" or "border-color".

```
.border, #border, table{ border:4px solid rgb(201, 44, 112) }
```


If only the border color should be changed use the property `border-color`.

```
.border{ border-color:rgb(201, 44, 112) }
```

If you want to add a box shadow in that color use:

Here you see how a box with a 4 pixel `rgb(201, 44, 112)` colored shadow looks like.

```
.boxshadow{ -moz-box-shadow:4px 4px 4px  
4px rgb(201, 44, 112); -webkit-box-  
shadow:4px 4px 4px 4px rgb(201, 44, 112);  
box-shadow:4px 4px 4px 4px rgb(201, 44,  
112) }
```

Background

The CSS property to change the background color of an element to HunterLab 39.2285, 58.3605, 2.0255 is called "background". The background property can be set on classes, ids or directly on the HTML element.

```
.background, #background, body{  
background: rgb(201, 44, 112) }
```

If only the background color should be changed can be used:

```
.background{ background-color: rgb(201, 44,  
112) }
```

This example shows the color as background, it is applied via the CSS property "background".

To optimize and compress your CSS code, you can use our [online CSS compressor and optimizer](#) based on csstidy. If you want to create a linear or radial gradient as background or border, check our [CSS Gradient Generator](#).

Hey! You found this booklet
interesting? Support Converting
Colors with the new Membership
Option!

The pro membership hides all ads, plus gives you
double the colors in the color bucket, and more
awesome pro features!

[Learn more, Memberships starting at \\$2.50/m!](#)

**Follow me
on Twitter!**

@ConvertingColor