

Converting Colors

HunterLab(39.2931, 52.5693,
0.6585)

Have a look what the booklet for
HunterLab(39.2931, 52.5693,
0.6585) contains.

HunterLab(39.2931, 52.5693, 0.6585)	3
<i>Conversions</i>	4
<i>Details</i>	6
<i>Harmonies</i>	12
<i>Previews</i>	24
<i>Color Blindness Simulation</i>	28
<i>CSS Examples</i>	31

Color

**HunterLab(39.2931, 52.5693,
0.6585)**

Conversions

Conversions Part 1

Format	Color
Hex	C23773
RGB	194, 55, 115
RGB Percent	76%, 22%, 45%
CMY	0.2392, 0.7843, 0.5490
CMYK	0.00, 0.72, 0.41, 0.24
HSL	334°, 56%, 49%
HSV	334°, 72%, 76%
XYZ	26.7088, 15.4395, 17.7920
YIQ	103.4010, 63.5840, 48.1280

Conversions

Conversions Part 2

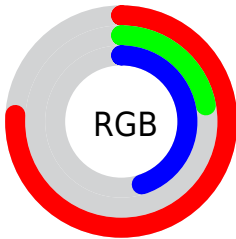
Format	Color
R_{YB}	194, 55, 115
Decimal	12728179
CIE _{Lab}	46.23, 59.26, -2.05
CIE _{LCh}	46, 59.296, 358.022
Yxy	15.4403, 0.4456, 0.2576
Android (android.graphics.Color)	4290918259 (0xFFC23773)
YUV	103.4010, 5.7183, 79.4553
Hunter-Lab	39.2931, 52.5693, 0.6585

Details

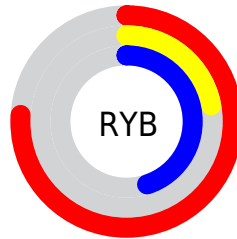
The HunterLab color **39.2931, 52.5693, 0.6585** is a dark color, and the websafe version is hex **CC3366**. The color can be described as dark muted rose. A complement of this color would be **64.1229, -42.1449, 17.9172**, and the grayscale version is **36.9437, -1.9712, 2.0072**.

A 20% lighter version of the original color is **59.5392, 56.6272, 1.2730**, and **23.5715, 42.0860, 1.9045** is the 20% darker color. If you saturate the color by 10%, you get **37.0222, 57.5044, 2.8569**, and if you desaturate by 10%, it is **42.3423, 46.0127, -0.7552**.

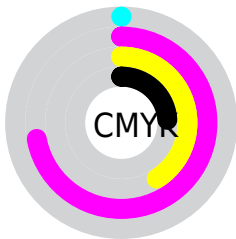
Distribution



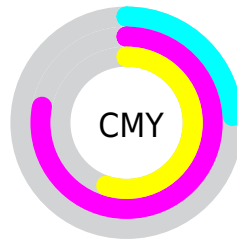
- Red (76%)
- Green (22%)
- Blue (45%)



- Red (76%)
- Yellow (22%)
- Blue (45%)



- Cyan (0%)
- Magenta (72%)
- Yellow (41%)
- Black (24%)



- Cyan (24%)
- Magenta (78%)
- Yellow (55%)

Brightness & Saturation Gradients

These gradients show how the HunterLab color 39.2931, 52.5693, 0.6585 changes by changing the brightness by 10 percent. The first figure shows a shift by +10% for each color and the second figure -10%.

Similar to the brightness gradients but the following saturation gradients show a change of the HunterLab color 39.2931, 52.5693, 0.6585 by changing the saturation by 10% instead.

39.2931, 52.5693,
0.6585

39.2931, 52.5693,
0.6585

150.3383, 67.5055,
5.8955

30.2142, 50.4552,
0.2845

59.6857, 56.5678,
1.5562

21.9668, 48.3606,
-0.0339

70.8976, 58.4203,
2.0693

14.6465, 46.5083,
-0.2862

82.7351, 60.1698,
2.6215

8.3058, 46.4188,
-0.5692

95.1667, 61.8192,
3.2103

0.0000, INF, NaN

0.0000, NaN, NaN

108.1652, 63.3726,
3.8338

0.0000, NaN, NaN

121.7069, 64.8350,

0.0000, NaN, NaN

4.4901

0.0000, NaN, NaN

135.7709, 66.2111,
5.1777

■ 39.2931, 52.5693,
0.6585

■ 39.2931, 52.5693,
0.6585

■ 37.0222, 57.5044,
2.8569

■ 42.3423, 46.0127,
-0.7552

■ 35.5464, 60.3707,
5.7076

■ 46.0960, 38.4185,
-1.3902

■ 34.7926, 61.4111,
8.3138

■ 50.4647, 30.2802,
-1.3294

■ 55.3573, 21.9458,
-0.6879

■ 60.6926, 13.6241,
0.4212

■ 66.4022, 5.4227,
1.9013

■ 72.4303, -2.6138,
3.6751

■ 78.7321, -10.4766,
5.6831

■ 85.2717, -18.1753,
7.8801

Harmonies

Analogous

The Analogous color harmony consists of three colors that are next to each other on the color wheel.



39.2942, 42.8748, -27.2884



39.2931, 52.5693, 0.6585



39.2942, 45.0403, 17.2115

Triad

The Triadic color harmony groups three colors that are evenly spaced from another and form a triangle on the color wheel.



39.2942, 52.5660, 0.6596



39.2942, -20.7871, 24.0983



39.2942, -22.8783, -52.8725

Complementary

The Complementary color scheme is a pair of colors which are on the opposite of each other on the color wheel.



39.2931, 52.5693, 0.6585



64.1229, -42.1449, 17.9172

Split Complementary

Split-complementary colors differ from the complementary color scheme. The scheme consists of three colors, the original color and two neighbors of the complement color.



39.2942, -34.0060, -23.1940



39.2931, 52.5693, 0.6585



39.2942, -33.0082, 18.5289

Square

The Square scheme is like the rectangle color scheme, but the four colors are evenly spaced on the color wheel.



39.2942, 52.5660, 0.6596



39.2942, -0.5613, 25.2298



39.2942, -37.2406, 3.5628



39.2942, -3.6129, -67.3809

Rectangle

The Rectangle color scheme consists of four colors that form a rectangle on the color wheel.



39.2931, 52.5693, 0.6585



39.2942, 32.0588, 22.3182



39.2942, -37.2406, 3.5628



39.2942, -27.5123, -43.7299

Sweetspot

The Sweet Spot groups the original color and five complimentary colors.



39.2942, 52.5660, 0.6596



81.9256, 17.9909, 0.6222



34.1727, 49.3639, -66.6318



37.3636, 9.8898, 0.0661

0.0000, NaN, NaN



46.2646, -2.4686, 2.5136

Same Dimension

The Same Dimension uses a secret algorithm to generate beautiful new colors.



39.2942, 52.5660, 0.6596



48.5677, 79.9716, 5.9515



39.2977, 43.8170, 19.5273



31.8567, 1.6819, 1.0730



28.2394, 49.8974, 6.3371



5.9863, 10.7955, -0.3466

Inverse Universe

The Inverse Universe completely reimagines the original color for something new.



39.2942, 52.5660, 0.6596



48.5677, 79.9716, 5.9515



62.6850, -28.2386, -10.1427



31.8567, 1.6819, 1.0730



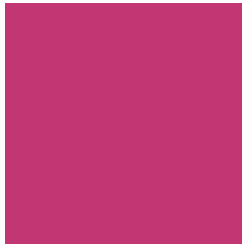
28.2394, 49.8974, 6.3371



5.9863, 10.7955, -0.3466

Previews

White Background



This preview shows how the HunterLab color 39.2931, 52.5693, 0.6585 looks on a white background.

Color Contrast Check

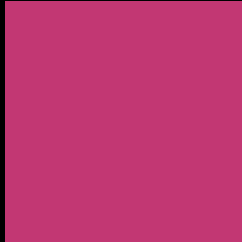
Large Text (above 18pt) WCAG AA ✓ Pass

Any Text WCAG AA ✓ Pass

Large Text (above 18pt) WCAG AAA ✓ Pass

Any Text WCAG AAA × Fail

Black Background



This preview shows how the HunterLab color 39.2931, 52.5693, 0.6585 looks on a black background.

Color Contrast Check

Large Text (above 18pt) WCAG AA ✓ Pass

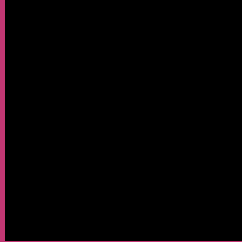
Any Text WCAG AA × Fail

Large Text (above 18pt) WCAG AAA × Fail

Any Text WCAG AAA × Fail

If you want to check with other color combinations, try the [Color Contrast Checker](#).

HunterLab 39.2931, 52.5693, 0.6585 Background



This preview shows how black text looks on a background with the HunterLab color 39.2931, 52.5693, 0.6585.



This preview shows how white text looks on a background with the HunterLab color 39.2931, 52.5693,

0.6585.

Color Blindness Simulation

Color vision deficiency is a very complex topic, and I could not describe the different causes any better than Wikipedia does, so if you want to learn more, you should check out their [article about color blindness](#).

Dichromacy



Original Color

39.2931, 52.5693, 0.6585

Protanopia

39.6987, 2.6448, -17.9574

Deuteranopia

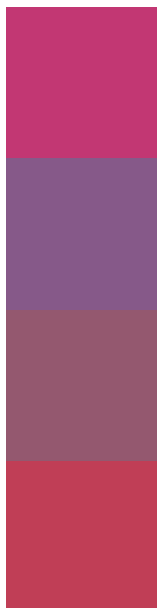
39.6682, 2.5351, 3.2827



Tritanopia

39.2619, 42.8580, 16.1932

Trichromacy



Original Color

39.2931, 52.5693, 0.6585

Protanomaly

37.4423, 19.9032, -14.0565

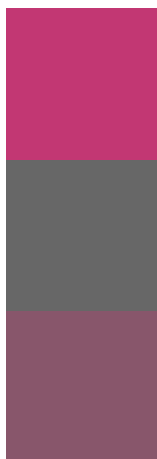
Deuteranomaly

37.9777, 20.8285, 0.2878

Tritanomaly

39.1454, 46.1347, 11.5941

Monochromacy



Original Color

39.2931, 52.5693, 0.6585

Achromatopsia

36.8284, -1.9651, 2.0010

Achromatomaly

35.9880, 17.0503, -0.4424

CSS Examples

Text

The CSS property to change the color of the text to HunterLab 39.2931, 52.5693, 0.6585 is called "color". The color property can be set on classes, ids or directly on the HTML element.

This example shows how text in the color `rgb(194, 55, 115)` looks like.

```
.text, #text, p{  
    color:rgb(194, 55, 115)  
}
```

If you want to add a text shadow in that color use the text-shadow property, you can generate a text shadow directly with our [CSS Text Shadow Generator](#).

Here you see how black text with a 4 pixel rgb(194, 55, 115) colored shadow looks like.

```
.shadow{ text-shadow: 4px 4px 2px rgb(194, 55, 115) }
```

Border

The CSS property to change the border of an element to HunterLab 39.2931, 52.5693, 0.6585 is called "border". The border property can be set on classes, ids or directly on the HTML element.

This example shows the color as border, it can be applied via the CSS property "border" or "border-color".

```
.border, #border, table{ border:4px solid rgb(194, 55, 115) }
```


If only the border color should be changed use the property `border-color`.

```
.border{ border-color:rgb(194, 55, 115) }
```

If you want to add a box shadow in that color use:

Here you see how a box with a 4 pixel `rgb(194, 55, 115)` colored shadow looks like.

```
.boxshadow{ -moz-box-shadow:4px 4px 4px  
4px rgb(194, 55, 115); -webkit-box-  
shadow:4px 4px 4px 4px rgb(194, 55, 115);  
box-shadow:4px 4px 4px 4px rgb(194, 55,  
115) }
```

Background

The CSS property to change the background color of an element to HunterLab 39.2931, 52.5693, 0.6585 is called "background". The background property can be set on classes, ids or directly on the HTML element.

```
.background, #background, body{  
background: rgb(194, 55, 115) }
```

If only the background color should be changed can be used:

```
.background{ background-color: rgb(194, 55,  
115) }
```

This example shows the color as background, it is applied via the CSS property "background".

To optimize and compress your CSS code, you can use our [online CSS compressor and optimizer](#) based on csstidy. If you want to create a linear or radial gradient as background or border, check our [CSS Gradient Generator](#).

Hey! You found this booklet interesting? Support Converting Colors with the new Membership Option!

The pro membership hides all ads, plus gives you double the colors in the color bucket, and more awesome pro features!

[Learn more, Memberships starting at \\$2.50/m!](#)

**Follow me
on Twitter!**

@ConvertingColor