

Converting Colors

HunterLab(39.4029, 10.2339,
-1.0758)

Have a look what the booklet for
HunterLab(39.4029, 10.2339,
-1.0758) contains.

HunterLab(39.4693, 10.2418, -0.7810)	3
<i>Conversions</i>	4
<i>Details</i>	6
<i>Harmonies</i>	12
<i>Previews</i>	24
<i>Color Blindness Simulation</i>	28
<i>CSS Examples</i>	31

Color

**HunterLab(39.4693, 10.2418,
-0.7810)**

Conversions

Conversions Part 1

Format	Color
Hex	856575
RGB	133, 101, 117
RGB Percent	52%, 40%, 46%
CMY	0.4784, 0.6039, 0.5412
CMYK	0.00, 0.24, 0.12, 0.48
HSL	330°, 14%, 46%
HSV	330°, 24%, 52%
XYZ	17.5374, 15.5783, 18.9122
YIQ	112.3920, 13.9360, 11.7600

Conversions

Conversions Part 2

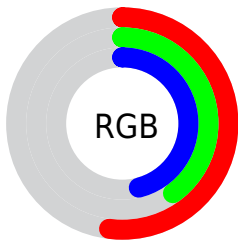
Format	Color
R_{YB}	133, 101, 117
Decimal	8742261
CIE _{Lab}	46.42, 15.61, -3.97
CIE _{LCh}	46, 16.112, 345.719
Yxy	15.5790, 0.3371, 0.2994
Android (android.graphics.Color)	4286932341 (0xFF856575)
YUV	112.3920, 2.2717, 18.0732
Hunter-Lab	39.4693, 10.2418, -0.7810

Details

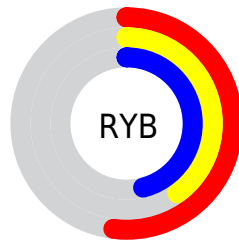
The HunterLab color $39.4693, 10.2418, -0.7810$ is a dark color, and the websafe version is hex 996666 . A complement of this color would be $45.6361, -13.5032, 6.0182$, and the grayscale version is $40.3917, -2.1552, 2.1946$.

A 20% lighter version of the original color is $59.9048, 11.0279, -0.0448$, and $22.1518, 9.2654, -1.2575$ is the 20% darker color. If you saturate the color by 10%, you get $36.1259, 15.6977, -1.8397$, and if you desaturate by 10%, it is $43.0537, 4.8420, 0.5133$.

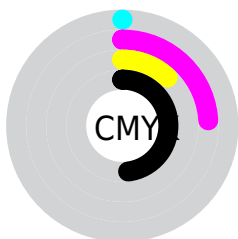
Distribution



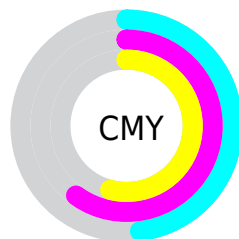
- Red (52%)
- Green (40%)
- Blue (46%)



- Red (52%)
- Yellow (40%)
- Blue (46%)



- Cyan (0%)
- Magenta (24%)
- Yellow (12%)
- Black (48%)



- Cyan (48%)
- Magenta (60%)
- Yellow (54%)

Brightness & Saturation Gradients

These gradients show how the HunterLab color 39.4693, 10.2418, -0.7810 changes by changing the brightness by 10 percent. The first figure shows a shift by +10% for each color and the second figure -10%.

Similar to the brightness gradients but the following saturation gradients show a change of the HunterLab color 39.4693, 10.2418, -0.7810 by changing the saturation by 10% instead.

■ 39.4693, 10.2418, -0.7810 ■ 39.4693, 10.2418, -0.7810

150.6135, 10.6110, 3.7196 ■ 30.3755, 9.8172, -1.0492

■ 59.8880, 10.7960, -0.0758 ■ 22.1119, 9.2743, -1.2525

■ 71.1119, 10.9519, 0.3492 ■ 14.7732, 8.5870, -1.3785

■ 82.9607, 11.0380, 0.8174 ■ 8.4286, 8.0190, -1.5144

■ 95.4030, 11.0607, 1.3260 0.0000, INF, NaN

108.4118, 11.0253, 1.8725 0.0000, NaN, NaN

121.9634, 10.9362, 0.0000, NaN, NaN

2.4548

0.0000, NaN, NaN

136.0369, 10.7970,
3.0710

■ 39.4693, 10.2418,
-0.7810

■ 39.4693, 10.2418,
-0.7810

■ 36.1259, 15.6977,
-1.8397

■ 43.0537, 4.8420,
0.5133

■ 33.0629, 21.1363,
-2.5992

■ 46.8417, -0.4619,
1.9894

■ 30.3300, 26.4158,
-2.9795

■ 50.8062, -5.6600,
3.6094

■ 27.9811, 31.3125,
-2.8950

■ 54.9241, -10.7544,
5.3442

■ 26.0687, 35.5192,
-2.2735

■ 59.1769, -15.7541,
7.1721

■ 24.6325, 38.6908,
-1.0874

■ 63.5496, -20.6706,
9.0770

■ 23.6770, 40.5769,
0.6045

■ 68.0299, -25.5160,
11.0466

■ 23.2073, 41.4634,
1.6618

■ 72.6073, -30.3017,
13.0717

■ 77.2734, -35.0384,
15.1451

Harmonies

Analogous

The Analogous color harmony consists of three colors that are next to each other on the color wheel.



39.4702, 6.8794, -6.7062



39.4693, 10.2418, -0.7810



39.4702, 10.1531, 5.1249

Triad

The Triadic color harmony groups three colors that are evenly spaced from another and form a triangle on the color wheel.



39.4702, 10.2405, -0.7802



39.4702, -5.3149, 11.6536



39.4702, -10.1615, -6.9545

Complementary

The Complementary color scheme is a pair of colors which are on the opposite of each other on the color wheel.



39.4693, 10.2418, -0.7810



45.6361, -13.5032, 6.0182

Split Complementary

Split-complementary colors differ from the complementary color scheme. The scheme consists of three colors, the original color and two neighbors of the complement color.



39.4702, -13.0342, -1.0795



39.4693, 10.2418, -0.7810



39.4702, -10.3572, 9.3327

Square

The Square scheme is like the rectangle color scheme, but the four colors are evenly spaced on the color wheel.



39.4702, 10.2405, -0.7802



39.4702, 0.9037, 11.7080



39.4702, -13.1035, 4.8686



39.4702, -5.0323, -10.6293

Rectangle

The Rectangle color scheme consists of four colors that form a rectangle on the color wheel.



39.4693, 10.2418, -0.7810



39.4702, 8.1421, 8.2629



39.4702, -13.1035, 4.8686



39.4702, -11.4086, -5.1339

Sweetspot

The Sweet Spot groups the original color and five complimentary colors.



39.4702, 10.2405, -0.7802



61.0848, 1.5680, 2.0269



38.4493, 8.0334, -10.3855



28.8838, 0.8964, 0.9188



82.0889, -4.3801, 4.4600



30.7619, -1.6414, 1.6714

Same Dimension

The Same Dimension uses a secret algorithm to generate beautiful new colors.



39.4702, 10.2405, -0.7802



50.2696, 17.7896, -1.8820



39.0311, 7.9600, 5.4865



21.7363, 1.0710, 0.5913



22.6532, 40.4800, 1.5704



1.3874, 2.5773, -0.6645

Inverse Universe

The Inverse Universe completely reimagines the original color for something new.



39.4702, 10.2405, -0.7802



50.2696, 17.7896, -1.8820



46.0821, -10.9648, -0.3471



21.7363, 1.0710, 0.5913



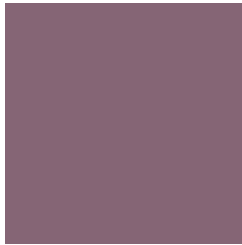
22.6532, 40.4800, 1.5704



1.3874, 2.5773, -0.6645

Previews

White Background



This preview shows how the HunterLab color 39.4693, 10.2418, -0.7810 looks on a white background.

Color Contrast Check

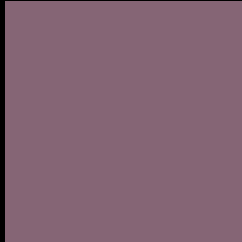
Large Text (above 18pt) WCAG AA ✓ Pass

Any Text WCAG AA ✓ Pass

Large Text (above 18pt) WCAG AAA ✓ Pass

Any Text WCAG AAA × Fail

Black Background



This preview shows how the HunterLab color 39.4693, 10.2418, -0.7810 looks on a black background.

Color Contrast Check

Large Text (above 18pt) WCAG AA ✓ Pass

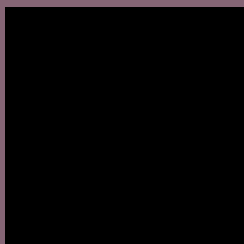
Any Text WCAG AA × Fail

Large Text (above 18pt) WCAG AAA × Fail

Any Text WCAG AAA × Fail

If you want to check with other color combinations, try the [Color Contrast Checker](#).

HunterLab 39.4693, 10.2418, -0.7810 Background



This preview shows how black text looks on a background with the HunterLab color 39.4693, 10.2418, -0.7810.



This preview shows how white text looks on a background with the HunterLab color 39.4693, 10.2418, -0.7810.

-0.7810.

Color Blindness Simulation

Color vision deficiency is a very complex topic, and I could not describe the different causes any better than Wikipedia does, so if you want to learn more, you should check out their [article about color blindness](#).

Dichromacy



Original Color

39.4693, 10.2418, -0.7810

Protanopia

39.4888, 0.0013, -3.3122

Deuteranopia

39.5321, 2.5278, -0.3773



Tritanopia

39.4133, 8.3880, 2.2417

Trichromacy



Original Color

39.4693, 10.2418, -0.7810

Protanomaly

39.3900, 3.6432, -2.4108

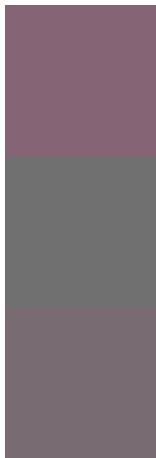
Deuteranomaly

39.4652, 4.9874, -0.4175

Tritanomaly

39.4975, 8.8265, 1.0412

Monochromacy



Original Color

39.4693, 10.2418, -0.7810

Achromatopsia

40.2529, -2.1478, 2.1870

Achromatomaly

39.9163, 2.3471, 0.9910

CSS Examples

Text

The CSS property to change the color of the text to HunterLab 39.4693, 10.2418, -0.7810 is called "color". The color property can be set on classes, ids or directly on the HTML element.

This example shows how text in the color `rgb(133, 101, 117)` looks like.

```
.text, #text, p{  
    color:rgb(133, 101, 117)  
}
```

If you want to add a text shadow in that color use the text-shadow property, you can generate a text shadow directly with our [CSS Text Shadow Generator](#).

Here you see how black text with a 4 pixel rgb(133, 101, 117) colored shadow looks like.

```
.shadow{ text-shadow: 4px 4px 2px rgb(133, 101, 117) }
```

Border

The CSS property to change the border of an element to HunterLab 39.4693, 10.2418, -0.7810 is called "border". The border property can be set on classes, ids or directly on the HTML element.

This example shows the color as border, it can be applied via the CSS property "border" or "border-color".

```
.border, #border, table{ border:4px solid rgb(133, 101, 117) }
```


If only the border color should be changed use the property `border-color`.

```
.border{ border-color:rgb(133, 101, 117) }
```

If you want to add a box shadow in that color use:

Here you see how a box with a 4 pixel `rgb(133, 101, 117)` colored shadow looks like.

```
.boxshadow{ -moz-box-shadow:4px 4px 4px  
4px rgb(133, 101, 117); -webkit-box-  
shadow:4px 4px 4px 4px rgb(133, 101, 117);  
box-shadow:4px 4px 4px 4px rgb(133, 101,  
117) }
```

Background

The CSS property to change the background color of an element to HunterLab 39.4693, 10.2418, -0.7810 is called "background". The background property can be set on classes, ids or directly on the HTML element.

```
.background, #background, body{  
background: rgb(133, 101, 117) }
```

If only the background color should be changed can be used:

```
.background{ background-color: rgb(133,  
101, 117) }
```

This example shows the color as background, it is applied via the CSS property "background".

To optimize and compress your CSS code, you can use our [online CSS compressor and optimizer](#) based on csstidy. If you want to create a linear or radial gradient as background or border, check our [CSS Gradient Generator](#).

Hey! You found this booklet interesting? Support Converting Colors with the new Membership Option!

The pro membership hides all ads, plus gives you double the colors in the color bucket, and more awesome pro features!

[Learn more, Memberships starting at \\$2.50/m!](#)

**Follow me
on Twitter!**

@ConvertingColor