

Converting Colors

HunterLab(39.5312, 25.6933,
11.0175)

Have a look what the booklet for
HunterLab(39.5312, 25.6933,
11.0175) contains.

HunterLab(39.4660, 26.0308, 10.9044)	3
<i>Conversions</i>	4
<i>Details</i>	6
<i>Harmonies</i>	12
<i>Previews</i>	24
<i>Color Blindness Simulation</i>	28
<i>CSS Examples</i>	31

Color

**HunterLab(39.4660, 26.0308,
10.9044)**

Conversions

Conversions Part 1

Format	Color
Hex	A75658
RGB	167, 86, 88
RGB Percent	65%, 34%, 35%
CMY	0.3451, 0.6627, 0.6549
CMYK	0.00, 0.48, 0.47, 0.35
HSL	359°, 32%, 50%
HSV	359°, 48%, 65%
XYZ	21.0256, 15.5757, 11.1308
YIQ	110.4470, 47.6340, 17.7940

Conversions

Conversions Part 2

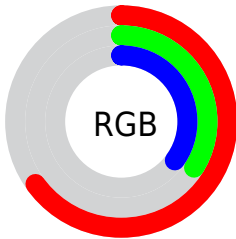
Format	Color
RYB	167, 86, 88
Decimal	10966616
CIELab	46.41, 33.37, 14.09
CIELCh	46, 36.225, 22.896
Yxy	15.5765, 0.4405, 0.3263
Android (android.graphics.Color)	4289156696 (0xFFA75658)
YUV	110.4470, -11.0664, 49.5970
Hunter-Lab	39.4660, 26.0308, 10.9044

Details

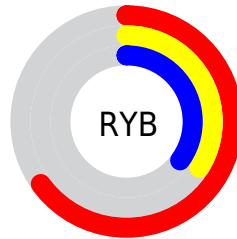
The HunterLab color **39.4660, 26.0308, 10.9044** is a dark color, and the websafe version is hex **CC6666**. A complement of this color would be **56.8620, -22.7591, -2.4798**, and the grayscale version is **39.6874, -2.1176, 2.1563**.

A 20% lighter version of the original color is **60.0162, 27.9992, 13.7181**, and **22.0841, 23.2114, 7.8785** is the 20% darker color. If you saturate the color by 10%, you get **36.0187, 32.3338, 12.7495**, and if you desaturate by 10%, it is **43.4313, 19.6365, 9.1217**.

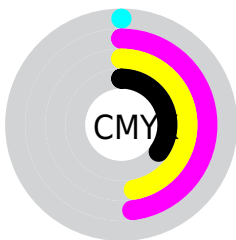
Distribution



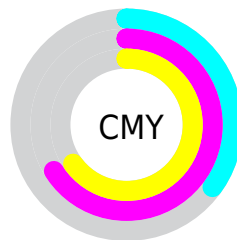
- Red (65%)
- Green (34%)
- Blue (35%)



- Red (65%)
- Yellow (34%)
- Blue (35%)



- Cyan (0%)
- Magenta (48%)
- Yellow (47%)
- Black (35%)



- Cyan (35%)
- Magenta (66%)
- Yellow (65%)

Brightness & Saturation Gradients

These gradients show how the HunterLab color 39.4660, 26.0308, 10.9044 changes by changing the brightness by 10 percent. The first figure shows a shift by +10% for each color and the second figure -10%.

Similar to the brightness gradients but the following saturation gradients show a change of the HunterLab color 39.4660, 26.0308, 10.9044 by changing the saturation by 10% instead.

■ 39.4660, 26.0308,
10.9044

■ 39.4660, 26.0308,
10.9044

150.6085, 32.9057,
23.0176

■ 30.3726, 24.7511,
9.4707

■ 59.8843, 28.2086,
13.6597

■ 22.1093, 23.3377,
7.9675

■ 71.1080, 29.1335,
15.0061

■ 14.7710, 21.7985,
6.3518

■ 82.9566, 29.9617,
16.3426

■ 8.4265, 20.6269,
5.8985

■ 95.3987, 30.7014,
17.6744

0.0000, INF, NaN

0.0000, NaN, NaN

■ 108.4074, 31.3599,
19.0052

0.0000, NaN, NaN

121.9588, 31.9433,

0.0000, NaN, NaN

136.0321, 32.4571,
21.6749

■ 39.4660, 26.0308,
10.9044

■ 39.4660, 26.0308,
10.9044

■ 36.0187, 32.3338,
12.7495

■ 43.4313, 19.6365,
9.1217

■ 33.1749, 38.2093,
14.5559

■ 47.8287, 13.3588,
7.4498

■ 31.0143, 43.1801,
16.1749

■ 52.5887, 7.2896,
5.9064

■ 29.5795, 46.7556,
17.4365

■ 57.6534, 1.4576,
4.4899

■ 28.7823, 48.8550,
18.2029

■ 62.9769, -4.1430,
3.1892

■ 28.6784, 49.1440,
18.2875

■ 68.5226, -9.5341,
1.9905

■ 74.2615, -14.7429,
0.8794

■ 80.1704, -19.7966,
-0.1569

■ 86.2305, -24.7206,
-1.1300

Harmonies

Analogous

The Analogous color harmony consists of three colors that are next to each other on the color wheel.



39.4670, 28.4793, -1.1683



39.4660, 26.0308, 10.9044



39.4670, 15.5710, 17.6531

Triad

The Triadic color harmony groups three colors that are evenly spaced from another and form a triangle on the color wheel.



39.4670, 26.0284, 10.9051



39.4670, -21.4466, 14.7319



39.4670, -5.3978, -32.8638

Complementary

The Complementary color scheme is a pair of colors which are on the opposite of each other on the color wheel.



39.4660, 26.0308, 10.9044



56.8620, -22.7591, -2.4798

Split Complementary

Split-complementary colors differ from the complementary color scheme. The scheme consists of three colors, the original color and two neighbors of the complement color.



39.4670, -17.1360, -24.3754



39.4660, 26.0308, 10.9044



39.4670, -25.5223, 5.1999

Square

The Square scheme is like the rectangle color scheme, but the four colors are evenly spaced on the color wheel.



39.4670, 26.0284, 10.9051



39.4670, -12.0897, 19.2609



39.4670, -24.0625, -9.2307



39.4670, 8.9764, -29.6657

Rectangle

The Rectangle color scheme consists of four colors that form a rectangle on the color wheel.



39.4660, 26.0308, 10.9044



39.4670, 6.1666, 19.6770



39.4670, -24.0625, -9.2307



39.4670, -9.7524, -31.2054

Sweetspot

The Sweet Spot groups the original color and five complimentary colors.



39.4670, 26.0284, 10.9051



72.5242, 7.2008, 7.2743



41.6784, 37.0239, -25.6774



33.6679, 4.1634, 3.6274



92.0917, -4.9138, 5.0035



39.3538, -2.0998, 2.1382

Same Dimension

The Same Dimension uses a secret algorithm to generate beautiful new colors.



39.4670, 26.0284, 10.9051



47.9710, 43.7237, 17.1980



48.2217, 7.4100, 19.0175



27.4685, 0.9168, 2.2062



25.0890, 42.9975, 15.9651



3.9250, 6.7497, 2.3187

Inverse Universe

The Inverse Universe completely reimagines the original color for something new.



39.4670, 26.0284, 10.9051



47.9710, 43.7237, 17.1980



45.3018, -5.6344, -20.0317



27.4685, 0.9168, 2.2062



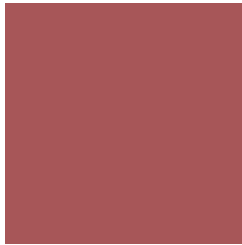
25.0890, 42.9975, 15.9651



3.9250, 6.7497, 2.3187

Previews

White Background



This preview shows how the HunterLab color 39.4660, 26.0308, 10.9044 looks on a white background.

Color Contrast Check

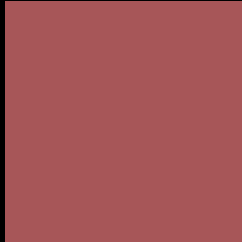
Large Text (above 18pt) WCAG AA ✓ Pass

Any Text WCAG AA ✓ Pass

Large Text (above 18pt) WCAG AAA ✓ Pass

Any Text WCAG AAA × Fail

Black Background



This preview shows how the HunterLab color 39.4660, 26.0308, 10.9044 looks on a black background.

Color Contrast Check

Large Text (above 18pt) WCAG AA ✓ Pass

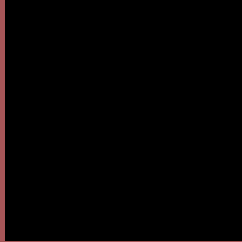
Any Text WCAG AA × Fail

Large Text (above 18pt) WCAG AAA × Fail

Any Text WCAG AAA × Fail

If you want to check with other color combinations, try the [Color Contrast Checker](#).

HunterLab 39.4660, 26.0308, 10.9044 Background



This preview shows how black text looks on a background with the HunterLab color 39.4660, 26.0308, 10.9044.



This preview shows how white text looks on a background with the HunterLab color 39.4660, 26.0308,

Color Blindness Simulation

Color vision deficiency is a very complex topic, and I could not describe the different causes any better than Wikipedia does, so if you want to learn more, you should check out their [article about color blindness](#).

Dichromacy



Original Color

39.4660, 26.0308, 10.9044

Protanopia

39.6444, -2.0811, 6.3611

Deuteranopia

39.6356, 2.6927, 11.6143



Tritanopia

39.3512, 26.9218, 9.4638

Trichromacy



Original Color

39.4660, 26.0308, 10.9044

Protanomaly

39.0131, 7.6625, 7.3558

Deuteranomaly

39.2877, 10.6166, 11.1082

Tritanomaly

39.3291, 26.8171, 9.7831

Monochromacy



Original Color

39.4660, 26.0308, 10.9044

Achromatopsia

39.4875, -2.1070, 2.1454

Achromatomaly

38.8484, 7.4251, 4.8834

CSS Examples

Text

The CSS property to change the color of the text to HunterLab 39.4660, 26.0308, 10.9044 is called "color". The color property can be set on classes, ids or directly on the HTML element.

This example shows how text in the color `rgb(167, 86, 88)` looks like.

```
.text, #text, p{  
    color:rgb(167, 86, 88)  
}
```

If you want to add a text shadow in that color use the text-shadow property, you can generate a text shadow directly with our [CSS Text Shadow Generator](#).

Here you see how black text with a 4 pixel rgb(167, 86, 88) colored shadow looks like.

```
.shadow{ text-shadow: 4px 4px 2px rgb(167, 86, 88) }
```

Border

The CSS property to change the border of an element to HunterLab 39.4660, 26.0308, 10.9044 is called "border". The border property can be set on classes, ids or directly on the HTML element.

This example shows the color as border, it can be applied via the CSS property "border" or "border-color".

```
.border, #border, table{ border:4px solid rgb(167, 86, 88) }
```


If only the border color should be changed use the property border-color.

```
.border{ border-color:rgb(167, 86, 88) }
```

If you want to add a box shadow in that color use:

Here you see how a box with a 4 pixel rgb(167, 86, 88) colored shadow looks like.

```
.boxshadow{ -moz-box-shadow:4px 4px 4px  
4px rgb(167, 86, 88); -webkit-box-  
shadow:4px 4px 4px 4px rgb(167, 86, 88);  
box-shadow:4px 4px 4px 4px rgb(167, 86,  
88) }
```

Background

The CSS property to change the background color of an element to HunterLab 39.4660, 26.0308, 10.9044 is called "background". The background property can be set on classes, ids or directly on the HTML element.

```
.background, #background, body{  
background: rgb(167, 86, 88) }
```

If only the background color should be changed can be used:

```
.background{ background-color: rgb(167, 86,  
88) }
```

This example shows the color as background, it is applied via the CSS property "background".

To optimize and compress your CSS code, you can use our [online CSS compressor and optimizer](#) based on csstidy. If you want to create a linear or radial gradient as background or border, check our [CSS Gradient Generator](#).

Hey! You found this booklet interesting? Support Converting Colors with the new Membership Option!

The pro membership hides all ads, plus gives you double the colors in the color bucket, and more awesome pro features!

[Learn more, Memberships starting at \\$2.50/m!](#)

**Follow me
on Twitter!**

@ConvertingColor