

Converting Colors

HunterLab(39.6160, 27.8728,
11.7311)

Have a look what the booklet for
HunterLab(39.6160, 27.8728,
11.7311) contains.

HunterLab(39.6421, 27.4624, 11.7403)	3
<i>Conversions</i>	4
<i>Details</i>	6
<i>Harmonies</i>	12
<i>Previews</i>	24
<i>Color Blindness Simulation</i>	28
<i>CSS Examples</i>	31

Color

**HunterLab(39.6421, 27.4624,
11.7403)**

Conversions

Conversions Part 1

Format	Color
Hex	AA5556
RGB	170, 85, 86
RGB Percent	67%, 33%, 34%
CMY	0.3333, 0.6666, 0.6627
CMYK	0.00, 0.50, 0.49, 0.33
HSL	359°, 33%, 50%
HSV	359°, 50%, 67%
XYZ	21.5058, 15.7150, 10.7039
YIQ	110.5290, 50.3390, 18.3310

Conversions

Conversions Part 2

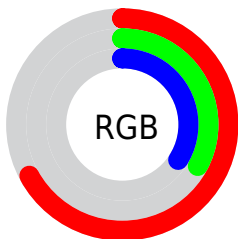
Format	Color
RYB	170, 85, 86
Decimal	11162966
CIELab	46.60, 34.86, 15.62
CIELCh	47, 38.198, 24.144
Yxy	15.7158, 0.4487, 0.3279
Android (android.graphics.Color)	4289353046 (0xFFAA5556)
YUV	110.5290, -12.0928, 52.1561
Hunter-Lab	39.6421, 27.4624, 11.7403

Details

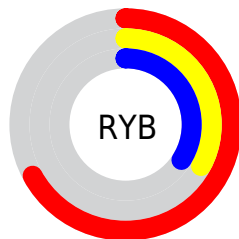
The HunterLab color **39.6421, 27.4624, 11.7403** is a dark color, and the websafe version is hex **CC6666**. A complement of this color would be **57.9186, -23.4366, -3.1482**, and the grayscale version is **39.7219, -2.1195, 2.1582**.

A 20% lighter version of the original color is **60.1356, 29.4772, 14.6063**, and **22.2251, 24.8813, 8.5343** is the 20% darker color. If you saturate the color by 10%, you get **36.2120, 33.8614, 13.6347**, and if you desaturate by 10%, it is **43.6178, 20.9348, 9.8718**.

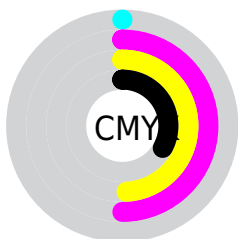
Distribution



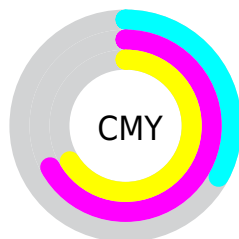
- Red (67%)
- Green (33%)
- Blue (34%)



- Red (67%)
- Yellow (33%)
- Blue (34%)



- Cyan (0%)
- Magenta (50%)
- Yellow (49%)
- Black (33%)



- Cyan (33%)
- Magenta (67%)
- Yellow (66%)

Brightness & Saturation Gradients

These gradients show how the HunterLab color 39.6421, 27.4624, 11.7403 changes by changing the brightness by 10 percent. The first figure shows a shift by +10% for each color and the second figure -10%.

Similar to the brightness gradients but the following saturation gradients show a change of the HunterLab color 39.6421, 27.4624, 11.7403 by changing the saturation by 10% instead.

■ 39.6421, 27.4624,
11.7403

■ 39.6421, 27.4624,
11.7403

150.8836, 34.8318,
24.5561

■ 30.5340, 26.1234,
10.1957

■ 60.0867, 29.7584,
14.6883

■ 22.2545, 24.6532,
8.5679

■ 71.3223, 30.7411,
16.1204

■ 14.8980, 23.0656,
6.8128

■ 83.1821, 31.6257,
17.5371

■ 8.5475, 21.7857,
5.9832

■ 95.6350, 32.4204,
18.9445

0.0000, INF, NaN

0.0000, NaN, NaN

■ 108.6539, 33.1326,
20.3471

0.0000, NaN, NaN

122.2152, 33.7684,

0.0000, NaN, NaN

21.7483

0.0000, NaN, NaN

136.2980, 34.3332,
23.1506

■ 39.6421, 27.4624,
11.7403

■ 39.6421, 27.4624,
11.7403

■ 36.2120, 33.8614,
13.6347

■ 43.6178, 20.9348,
9.8718

■ 33.4151, 39.7634,
15.4379

■ 48.0493, 14.5119,
8.0913

■ 31.3294, 44.6638,
16.9888

■ 52.8630, 8.3002,
6.4258

■ 29.9890, 48.0745,
18.1205

■ 57.9973, 2.3358,
4.8793

■ 29.2413, 50.0905,
18.7790

■ 63.4034, -3.3848,
3.4443

■ 29.2410, 50.0911,
18.7792

■ 69.0424, -8.8832,
2.1085

■ 74.8833, -14.1876,
0.8588

■ 80.9016, -19.3270,
-0.3175

■ 87.0774, -24.3279,
-1.4314

Harmonies

Analogous

The Analogous color harmony consists of three colors that are next to each other on the color wheel.



39.6431, 30.4870, -0.7155



39.6421, 27.4624, 11.7403



39.6431, 16.0395, 18.4677

Triad

The Triadic color harmony groups three colors that are evenly spaced from another and form a triangle on the color wheel.



39.6431, 27.4599, 11.7410



39.6431, -22.7137, 15.0024



39.6431, -4.9896, -35.5057

Complementary

The Complementary color scheme is a pair of colors which are on the opposite of each other on the color wheel.



39.6421, 27.4624, 11.7403



57.9186, -23.4366, -3.1482

Split Complementary

Split-complementary colors differ from the complementary color scheme. The scheme consists of three colors, the original color and two neighbors of the complement color.



39.6431, -17.4996, -26.7862



39.6421, 27.4624, 11.7403



39.6431, -26.7186, 4.8311

Square

The Square scheme is like the rectangle color scheme, but the four colors are evenly spaced on the color wheel.



39.6431, 27.4599, 11.7410



39.6431, -13.1377, 19.8074



39.6431, -24.9604, -10.6432



39.6431, 10.2560, -31.5067

Rectangle

The Rectangle color scheme consists of four colors that form a rectangle on the color wheel.



39.6421, 27.4624, 11.7403



39.6431, 5.9924, 20.4074



39.6431, -24.9604, -10.6432



39.6431, -9.6235, -33.8890

Sweetspot

The Sweet Spot groups the original color and five complimentary colors.



39.6431, 27.4599, 11.7410



74.4244, 7.3425, 7.6518



42.1771, 39.5164, -26.7792



34.4816, 4.2486, 3.8168



93.2148, -4.9737, 5.0645



40.3295, -2.1519, 2.1912

Same Dimension

The Same Dimension uses a secret algorithm to generate beautiful new colors.



39.6431, 27.4599, 11.7410



48.3226, 46.5226, 18.6404



49.1383, 7.3270, 20.0358



27.4658, 0.9019, 2.2455



25.0806, 42.9665, 16.0892



3.9176, 6.7224, 2.4279

Inverse Universe

The Inverse Universe completely reimagines the original color for something new.



39.6431, 27.4599, 11.7410



48.3226, 46.5226, 18.6404



45.2913, -5.0003, -21.9637



27.4658, 0.9019, 2.2455



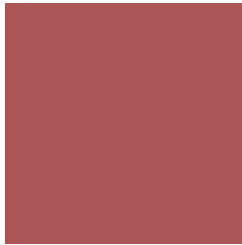
25.0806, 42.9665, 16.0892



3.9176, 6.7224, 2.4279

Previews

White Background



This preview shows how the HunterLab color 39.6421, 27.4624, 11.7403 looks on a white background.

Color Contrast Check

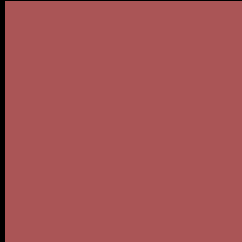
Large Text (above 18pt) WCAG AA ✓ Pass

Any Text WCAG AA ✓ Pass

Large Text (above 18pt) WCAG AAA ✓ Pass

Any Text WCAG AAA × Fail

Black Background



This preview shows how the HunterLab color 39.6421, 27.4624, 11.7403 looks on a black background.

Color Contrast Check

Large Text (above 18pt) WCAG AA ✓ Pass

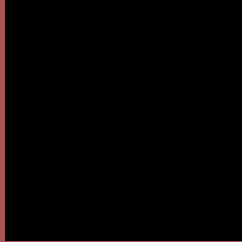
Any Text WCAG AA × Fail

Large Text (above 18pt) WCAG AAA × Fail

Any Text WCAG AAA × Fail

If you want to check with other color combinations, try the [Color Contrast Checker](#).

HunterLab 39.6421, 27.4624, 11.7403 Background



This preview shows how black text looks on a background with the HunterLab color 39.6421, 27.4624, 11.7403.

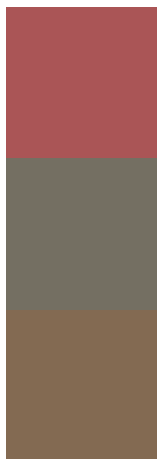


This preview shows how white text looks on a background with the HunterLab color 39.6421, 27.4624, 11.7403.

Color Blindness Simulation

Color vision deficiency is a very complex topic, and I could not describe the different causes any better than Wikipedia does, so if you want to learn more, you should check out their [article about color blindness](#).

Dichromacy



Original Color

39.6421, 27.4624, 11.7403

Protanopia

39.9546, -2.4983, 7.4289

Deuteranopia

39.6769, 2.7138, 12.5676



Tritanopia

39.5283, 28.3356, 10.3445

Trichromacy



Original Color

39.6421, 27.4624, 11.7403

Protanomaly

39.4273, 7.6275, 8.5039

Deuteranomaly

39.2169, 11.5064, 11.9943

Tritanomaly

39.5069, 28.2348, 10.6544

Monochromacy



Original Color

39.6421, 27.4624, 11.7403

Achromatopsia

39.8699, -2.1274, 2.1662

Achromatomaly

39.2015, 7.2814, 5.2713

CSS Examples

Text

The CSS property to change the color of the text to HunterLab 39.6421, 27.4624, 11.7403 is called "color". The color property can be set on classes, ids or directly on the HTML element.

This example shows how text in the color `rgb(170, 85, 86)` looks like.

```
.text, #text, p{  
    color:rgb(170, 85, 86)  
}
```

If you want to add a text shadow in that color use the text-shadow property, you can generate a text shadow directly with our [CSS Text Shadow Generator](#).

Here you see how black text with a 4 pixel rgb(170, 85, 86) colored shadow looks like.

```
.shadow{ text-shadow: 4px 4px 2px rgb(170, 85, 86) }
```

Border

The CSS property to change the border of an element to HunterLab 39.6421, 27.4624, 11.7403 is called "border". The border property can be set on classes, ids or directly on the HTML element.

This example shows the color as border, it can be applied via the CSS property "border" or "border-color".

```
.border, #border, table{ border:4px solid rgb(170, 85, 86) }
```


If only the border color should be changed use the property border-color.

```
.border{ border-color:rgb(170, 85, 86) }
```

If you want to add a box shadow in that color use:

Here you see how a box with a 4 pixel rgb(170, 85, 86) colored shadow looks like.

```
.boxshadow{ -moz-box-shadow:4px 4px 4px  
4px rgb(170, 85, 86); -webkit-box-  
shadow:4px 4px 4px 4px rgb(170, 85, 86);  
box-shadow:4px 4px 4px 4px rgb(170, 85,  
86) }
```

Background

The CSS property to change the background color of an element to HunterLab 39.6421, 27.4624, 11.7403 is called "background". The background property can be set on classes, ids or directly on the HTML element.

```
.background, #background, body{  
background: rgb(170, 85, 86) }
```

If only the background color should be changed can be used:

```
.background{ background-color: rgb(170, 85,  
86) }
```

This example shows the color as background, it is applied via the CSS property "background".

To optimize and compress your CSS code, you can use our [online CSS compressor and optimizer](#) based on csstidy. If you want to create a linear or radial gradient as background or border, check our [CSS Gradient Generator](#).

Hey! You found this booklet interesting? Support Converting Colors with the new Membership Option!

The pro membership hides all ads, plus gives you double the colors in the color bucket, and more awesome pro features!

[Learn more, Memberships starting at \\$2.50/m!](#)

**Follow me
on Twitter!**

@ConvertingColor