

Converting Colors

HunterLab(39.6611, 59.8027,
7.4828)

Have a look what the booklet for
HunterLab(39.6611, 59.8027,
7.4828) contains.

HunterLab(39.7132, 60.0639, 7.5227)	3
<i>Conversions</i>	4
<i>Details</i>	6
<i>Harmonies</i>	12
<i>Previews</i>	24
<i>Color Blindness Simulation</i>	28
<i>CSS Examples</i>	31

Color

**HunterLab(39.7132, 60.0639,
7.5227)**

Conversions

Conversions Part 1

Format	Color
Hex	CF2964
RGB	207, 41, 100
RGB Percent	81%, 16%, 39%
CMY	0.1882, 0.8392, 0.6078
CMYK	0.00, 0.80, 0.52, 0.19
HSL	339°, 67%, 49%
HSV	339°, 80%, 81%
XYZ	28.8253, 15.7714, 13.5815
YIQ	97.3600, 79.9970, 53.5410

Conversions

Conversions Part 2

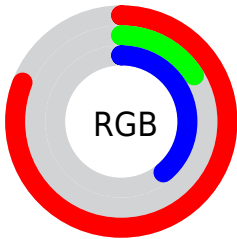
Format	Color
RYB	207, 41, 100
Decimal	13576548
CIELab	46.67, 65.78, 8.13
CIELCh	47, 66.284, 7.045
Yxy	15.7723, 0.4955, 0.2711
Android (android.graphics.Color)	4291766628 (0xFFCF2964)
YUV	97.3600, 1.3015, 96.1543
Hunter-Lab	39.7132, 60.0639, 7.5227

Details

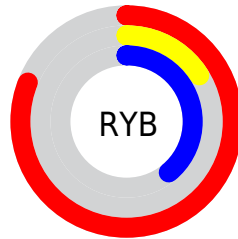
The HunterLab color **39.7132, 60.0639, 7.5227** is a dark color, and the websafe version is hex **CC3366**. The color can be described as dark muted rose. A complement of this color would be **68.7283, -46.0623, 17.3694**, and the grayscale version is **34.6858, -1.8507, 1.8845**.

A 20% lighter version of the original color is **57.7884, 58.7996, 6.5994**, and **25.2534, 44.3018, 8.1427** is the 20% darker color. If you saturate the color by 10%, you get **38.0254, 63.4578, 10.5973**, and if you desaturate by 10%, it is **42.2843, 54.4995, 4.9609**.

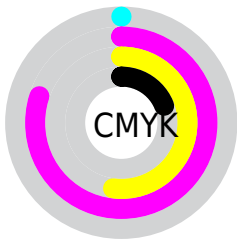
Distribution



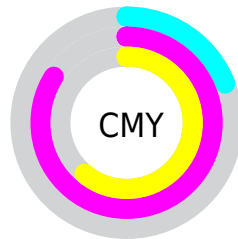
- Red (81%)
- Green (16%)
- Blue (39%)



- Red (81%)
- Yellow (16%)
- Blue (39%)



- Cyan (0%)
- Magenta (80%)
- Yellow (52%)
- Black (19%)



- Cyan (19%)
- Magenta (84%)
- Yellow (61%)

Brightness & Saturation Gradients

These gradients show how the HunterLab color 39.7132, 60.0639, 7.5227 changes by changing the brightness by 10 percent. The first figure shows a shift by +10% for each color and the second figure -10%.

Similar to the brightness gradients but the following saturation gradients show a change of the HunterLab color 39.7132, 60.0639, 7.5227 by changing the saturation by 10% instead.

39.7132, 60.0639,
7.5227

39.7132, 60.0639,
7.5227

150.9948, 76.6950,
16.9742

30.5993, 57.8276,
6.5096

60.1685, 64.3974,
9.5491

22.3133, 55.6818,
5.4811

71.4089, 66.4383,
10.5713

14.9494, 53.9266,
4.4178

83.2733, 68.3818,
11.6040

8.5959, 53.9925,
4.3881

95.7305, 70.2276,
12.6492

0.0000, INF, NaN

0.0000, INF, NaN

108.7536, 71.9780,
13.7080

0.0000, NaN, NaN

122.3188, 73.6367,

0.0000, NaN, NaN

14.7814

0.0000, NaN, NaN

136.4055, 75.2076,
15.8700

■ 39.7132, 60.0639,
7.5227

■ 39.7132, 60.0639,
7.5227

■ 38.0254, 63.4578,
10.5973

■ 42.2843, 54.4995,
4.9609

■ 37.0862, 64.8285,
13.7534

■ 45.7020, 47.3138,
3.0794

■ 49.8828, 39.1283,
1.9180

■ 54.7233, 30.4595,
1.4250

■ 60.1228, 21.6544,
1.5077

■ 65.9929, 12.9121,
2.0660

■ 72.2601, 4.3290,
3.0102

■ 78.8650, -4.0602,
4.2658

■ 85.7599, -12.2545,
5.7735

Harmonies

Analogous

The Analogous color harmony consists of three colors that are next to each other on the color wheel.



39.7144, 54.6430, -20.9921



39.7132, 60.0639, 7.5227



39.7144, 45.7237, 21.3752

Triad

The Triadic color harmony groups three colors that are evenly spaced from another and form a triangle on the color wheel.



39.7144, 60.0599, 7.5237



39.7144, -27.8012, 24.3910



39.7144, -19.6724, -70.4401

Complementary

The Complementary color scheme is a pair of colors which are on the opposite of each other on the color wheel.



39.7132, 60.0639, 7.5227



68.7283, -46.0623, 17.3694

Split Complementary

Split-complementary colors differ from the complementary color scheme. The scheme consists of three colors, the original color and two neighbors of the complement color.



39.7144, -34.4610, -38.0584



39.7132, 60.0639, 7.5227



39.7144, -38.2492, 16.5114

Square

The Square scheme is like the rectangle color scheme, but the four colors are evenly spaced on the color wheel.



39.7144, 60.0599, 7.5237



39.7144, -8.0227, 26.2648



39.7144, -40.3302, -4.0708



39.7144, 4.1465, -78.9513

Rectangle

The Rectangle color scheme consists of four colors that form a rectangle on the color wheel.



39.7132, 60.0639, 7.5227



39.7144, 28.6198, 24.8698



39.7144, -40.3302, -4.0708



39.7144, -25.6601, -61.2989

Sweetspot

The Sweet Spot groups the original color and five complimentary colors.



39.7144, 60.0599, 7.5237



80.4296, 20.8683, 2.2603



34.9507, 61.0747, -77.5346



35.9783, 11.5041, 0.9354

0.0000, NaN, NaN



46.2646, -2.4686, 2.5136

Same Dimension

The Same Dimension uses a secret algorithm to generate beautiful new colors.



39.7144, 60.0599, 7.5237



47.2738, 81.5874, 16.3146



41.2270, 48.7292, 23.2382



34.4625, 1.7404, 1.4669



29.4653, 51.5605, 10.5102



7.0738, 12.5818, 0.9462

Inverse Universe

The Inverse Universe completely reimagines the original color for something new.



39.7144, 60.0599, 7.5237



47.2738, 81.5874, 16.3146



62.9440, -26.4976, -17.2825



34.4625, 1.7404, 1.4669



29.4653, 51.5605, 10.5102



7.0738, 12.5818, 0.9462

Previews

White Background



This preview shows how the HunterLab color 39.7132, 60.0639, 7.5227 looks on a white background.

Color Contrast Check

Large Text (above 18pt) WCAG AA ✓ Pass

Any Text WCAG AA ✓ Pass

Large Text (above 18pt) WCAG AAA ✓ Pass

Any Text WCAG AAA × Fail

Black Background



This preview shows how the HunterLab color 39.7132, 60.0639, 7.5227 looks on a black background.

Color Contrast Check

Large Text (above 18pt) WCAG AA ✓ Pass

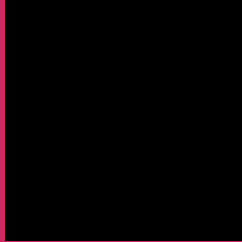
Any Text WCAG AA × Fail

Large Text (above 18pt) WCAG AAA × Fail

Any Text WCAG AAA × Fail

If you want to check with other color combinations, try the [Color Contrast Checker](#).

HunterLab 39.7132, 60.0639, 7.5227 Background



This preview shows how black text looks on a background with the HunterLab color 39.7132, 60.0639, 7.5227.

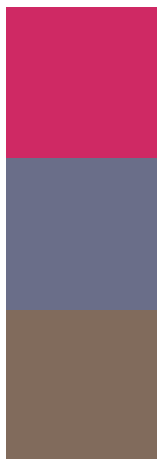


This preview shows how white text looks on a background with the HunterLab color 39.7132, 60.0639,

Color Blindness Simulation

Color vision deficiency is a very complex topic, and I could not describe the different causes any better than Wikipedia does, so if you want to learn more, you should check out their [article about color blindness](#).

Dichromacy



Original Color

39.7132, 60.0639, 7.5227

Protanopia

40.0277, 1.4588, -10.3656

Deuteranopia

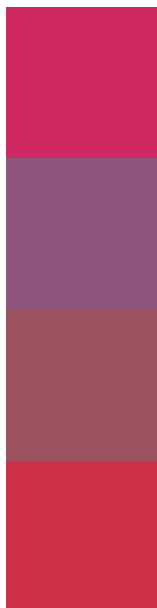
39.9440, 2.6828, 9.6311



Tritanopia

39.7507, 52.3060, 20.0188

Trichromacy



Original Color

39.7132, 60.0639, 7.5227

Protanomaly

37.1374, 22.5560, -7.1646

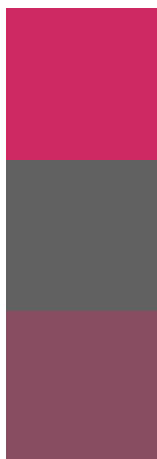
Deuteranomaly

37.6574, 24.4620, 6.5868

Tritanomaly

39.7157, 54.9453, 16.5352

Monochromacy



Original Color

39.7132, 60.0639, 7.5227

Achromatopsia

34.5743, -1.8448, 1.8785

Achromatomaly

33.9234, 20.4828, 1.0662

CSS Examples

Text

The CSS property to change the color of the text to HunterLab 39.7132, 60.0639, 7.5227 is called "color". The color property can be set on classes, ids or directly on the HTML element.

This example shows how text in the color `rgb(207, 41, 100)` looks like.

```
.text, #text, p{  
    color:rgb(207, 41, 100)  
}
```

If you want to add a text shadow in that color use the text-shadow property, you can generate a text shadow directly with our [CSS Text Shadow Generator](#).

Here you see how black text with a 4 pixel rgb(207, 41, 100) colored shadow looks like.

```
.shadow{ text-shadow: 4px 4px 2px rgb(207, 41, 100) }
```

Border

The CSS property to change the border of an element to HunterLab 39.7132, 60.0639, 7.5227 is called "border". The border property can be set on classes, ids or directly on the HTML element.

This example shows the color as border, it can be applied via the CSS property "border" or "border-color".

```
.border, #border, table{ border:4px solid rgb(207, 41, 100) }
```


If only the border color should be changed use the property `border-color`.

```
.border{ border-color:rgb(207, 41, 100) }
```

If you want to add a box shadow in that color use:

Here you see how a box with a 4 pixel `rgb(207, 41, 100)` colored shadow looks like.

```
.boxshadow{ -moz-box-shadow:4px 4px 4px  
4px rgb(207, 41, 100); -webkit-box-  
shadow:4px 4px 4px 4px rgb(207, 41, 100);  
box-shadow:4px 4px 4px 4px rgb(207, 41,  
100) }
```

Background

The CSS property to change the background color of an element to HunterLab 39.7132, 60.0639, 7.5227 is called "background". The background property can be set on classes, ids or directly on the HTML element.

```
.background, #background, body{  
background: rgb(207, 41, 100) }
```

If only the background color should be changed can be used:

```
.background{ background-color: rgb(207, 41,  
100) }
```

This example shows the color as background, it is applied via the CSS property "background".

To optimize and compress your CSS code, you can use our [online CSS compressor and optimizer](#) based on csstidy. If you want to create a linear or radial gradient as background or border, check our [CSS Gradient Generator](#).

Hey! You found this booklet interesting? Support Converting Colors with the new Membership Option!

The pro membership hides all ads, plus gives you double the colors in the color bucket, and more awesome pro features!

[Learn more, Memberships starting at \\$2.50/m!](#)

**Follow me
on Twitter!**

@ConvertingColor