

Converting Colors

HunterLab(39.7274, 29.3504,
12.7058)

Have a look what the booklet for
HunterLab(39.7274, 29.3504,
12.7058) contains.

HunterLab(39.6173, 29.2893, 12.6774)	3
<i>Conversions</i>	4
<i>Details</i>	6
<i>Harmonies</i>	12
<i>Previews</i>	24
<i>Color Blindness Simulation</i>	28
<i>CSS Examples</i>	31

Color

**HunterLab(39.6173, 29.2893,
12.6774)**

Conversions

Conversions Part 1

Format	Color
Hex	AD5353
RGB	173, 83, 83
RGB Percent	68%, 33%, 33%
CMY	0.3216, 0.6745, 0.6745
CMYK	0.00, 0.52, 0.52, 0.32
HSL	0°, 35%, 50%
HSV	0°, 52%, 68%
XYZ	21.8882, 15.6953, 10.0595
YIQ	109.9100, 53.6400, 19.0800

Conversions

Conversions Part 2

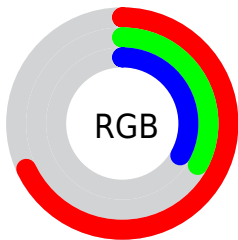
Format	Color
R_{YB}	173, 83, 83
Decimal	11359059
CIE _{Lab}	46.57, 36.76, 17.47
CIE _{LCh}	47, 40.703, 25.417
Yxy	15.6961, 0.4594, 0.3294
Android (android.graphics.Color)	4289549139 (0xFFAD5353)
YUV	109.9100, -13.2666, 55.3299
Hunter-Lab	39.6173, 29.2893, 12.6774

Details

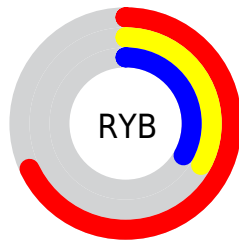
The HunterLab color **39.6173, 29.2893, 12.6774** is a dark color, and the websafe version is hex **CC6666**. A complement of this color would be **58.9418, -24.2497, -3.8735**, and the grayscale version is **39.4888, -2.1070, 2.1455**.

A 20% lighter version of the original color is **60.1246, 31.6676, 16.0761**, and **22.2276, 26.1185, 9.2625** is the 20% darker color. If you saturate the color by 10%, you get **36.2440, 35.7577, 14.6032**, and if you desaturate by 10%, it is **43.5695, 22.6312, 10.7327**.

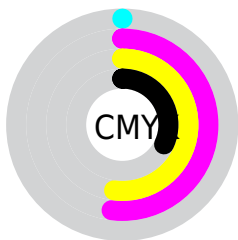
Distribution



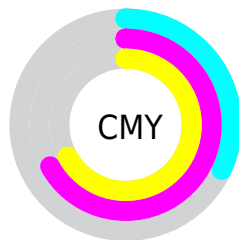
- Red (68%)
- Green (33%)
- Blue (33%)



- Red (68%)
- Yellow (33%)
- Blue (33%)



- Cyan (0%)
- Magenta (52%)
- Yellow (52%)
- Black (32%)



- Cyan (32%)
- Magenta (67%)
- Yellow (67%)

Brightness & Saturation Gradients

These gradients show how the HunterLab color 39.6173, 29.2893, 12.6774 changes by changing the brightness by 10 percent. The first figure shows a shift by +10% for each color and the second figure -10%.

Similar to the brightness gradients but the following saturation gradients show a change of the HunterLab color 39.6173, 29.2893, 12.6774 by changing the saturation by 10% instead.

■ 39.6173, 29.2893,
12.6774

■ 39.6173, 29.2893,
12.6774

150.8449, 37.3068,
26.3527

■ 30.5113, 27.8728,
10.9957

■ 60.0582, 31.7404,
15.8625

■ 22.2341, 26.3296,
9.2132

■ 71.2921, 32.7988,
17.3996

■ 14.8801, 24.6822,
7.3227

■ 83.1504, 33.7573,
18.9145

■ 8.5305, 23.4077,
5.9714

■ 95.6018, 34.6242,
20.4143

0.0000, INF, NaN

0.0000, NaN, NaN

■ 108.6192, 35.4068,
21.9045

0.0000, NaN, NaN

122.1791, 36.1112,

0.0000, NaN, NaN

136.2606, 36.7429,
24.8708

■ 39.6173, 29.2893,
12.6774

■ 39.6173, 29.2893,
12.6774

■ 36.2440, 35.7577,
14.6032

■ 43.5695, 22.6312,
10.7327

■ 33.5385, 41.6266,
16.3747

■ 48.0067, 16.0521,
8.8479

■ 31.5742, 46.3640,
17.8202

■ 52.8503, 9.6808,
7.0620

■ 30.3716, 49.5004,
18.7842

■ 58.0343, 3.5650,
5.3863

■ 29.8067, 51.0432,
19.2604

■ 63.5061, -2.2938,
3.8174

■ 69.2238, -7.9163,
2.3454

■ 75.1541, -13.3313,
0.9583

■ 81.2707, -18.5691,
-0.3560

■ 87.5524, -23.6581,
-1.6085

Harmonies

Analogous

The Analogous color harmony consists of three colors that are next to each other on the color wheel.



39.6183, 33.0102, -0.2268



39.6173, 29.2893, 12.6774



39.6183, 16.6786, 19.3535

Triad

The Triadic color harmony groups three colors that are evenly spaced from another and form a triangle on the color wheel.



39.6183, 29.2866, 12.6781



39.6183, -24.1865, 15.3202



39.6183, -4.5183, -38.9122

Complementary

The Complementary color scheme is a pair of colors which are on the opposite of each other on the color wheel.



39.6173, 29.2893, 12.6774



58.9418, -24.2497, -3.8735

Split Complementary

Split-complementary colors differ from the complementary color scheme. The scheme consists of three colors, the original color and two neighbors of the complement color.



39.6183, -17.9516, -29.8469



39.6173, 29.2893, 12.6774



39.6183, -28.1159, 4.4005

Square

The Square scheme is like the rectangle color scheme, but the four colors are evenly spaced on the color wheel.



39.6183, 29.2866, 12.6781



39.6183, -14.3497, 20.4053



39.6183, -26.0257, -12.3891



39.6183, 11.8097, -33.9120

Rectangle

The Rectangle color scheme consists of four colors that form a rectangle on the color wheel.



39.6173, 29.2893, 12.6774



39.6183, 5.8407, 21.1881



39.6183, -26.0257, -12.3891



39.6183, -9.4906, -37.3342

Sweetspot

The Sweet Spot groups the original color and five complimentary colors.



39.6183, 29.2866, 12.6781



74.6613, 8.2122, 8.1449



42.5299, 42.5427, -28.1633



34.1663, 4.5840, 4.0041



93.2148, -4.9737, 5.0645



40.3295, -2.1519, 2.1912

Same Dimension

The Same Dimension uses a secret algorithm to generate beautiful new colors.



39.6183, 29.2866, 12.6781



48.0756, 48.7366, 19.8080



49.9471, 7.3480, 21.1912



28.3115, 0.9271, 2.3554



25.5480, 43.7499, 16.5084



4.2614, 7.2961, 2.7536

Inverse Universe

The Inverse Universe completely reimagines the original color for something new.



58.9418, -24.2497, -3.8735



78.0193, -35.7721, -6.3593



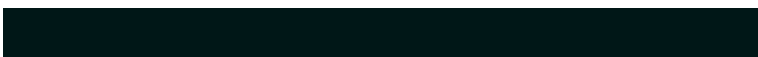
45.0495, -4.2289, -24.3471



30.1198, -3.8985, 0.8683



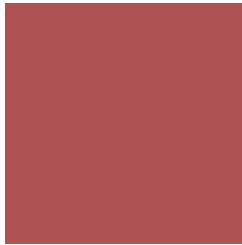
49.1635, -26.0624, -5.1889



8.2001, -4.3471, -0.8653

Previews

White Background



This preview shows how the HunterLab color 39.6173, 29.2893, 12.6774 looks on a white background.

Color Contrast Check

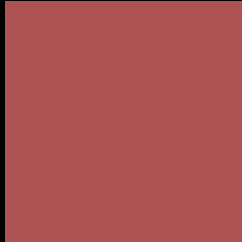
Large Text (above 18pt) WCAG AA ✓ Pass

Any Text WCAG AA ✓ Pass

Large Text (above 18pt) WCAG AAA ✓ Pass

Any Text WCAG AAA × Fail

Black Background



This preview shows how the HunterLab color 39.6173, 29.2893, 12.6774 looks on a black background.

Color Contrast Check

Large Text (above 18pt) WCAG AA ✓ Pass

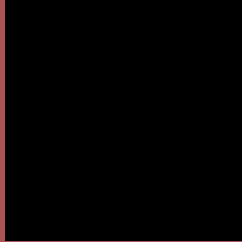
Any Text WCAG AA × Fail

Large Text (above 18pt) WCAG AAA × Fail

Any Text WCAG AAA × Fail

If you want to check with other color combinations, try the [Color Contrast Checker](#).

HunterLab 39.6173, 29.2893, 12.6774 Background



This preview shows how black text looks on a background with the HunterLab color 39.6173, 29.2893, 12.6774.

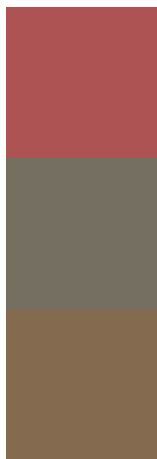


This preview shows how white text looks on a background with the HunterLab color 39.6173, 29.2893,

Color Blindness Simulation

Color vision deficiency is a very complex topic, and I could not describe the different causes any better than Wikipedia does, so if you want to learn more, you should check out their [article about color blindness](#).

Dichromacy



Original Color

39.6173, 29.2893, 12.6774

Protanopia

39.9079, -2.7548, 8.1019

Deuteranopia

39.7217, 2.7515, 13.4833



Tritanopia

39.5265, 30.2356, 11.0365

Trichromacy



Original Color

39.6173, 29.2893, 12.6774

Protanomaly

39.2187, 8.0973, 9.3453

Deuteranomaly

39.3924, 11.9398, 13.0595

Tritanomaly

39.4851, 30.0426, 11.6364

Monochromacy



Original Color

39.6173, 29.2893, 12.6774

Achromatopsia

39.4875, -2.1070, 2.1454

Achromatomaly

38.7569, 8.3078, 5.5832

CSS Examples

Text

The CSS property to change the color of the text to HunterLab 39.6173, 29.2893, 12.6774 is called "color". The color property can be set on classes, ids or directly on the HTML element.

This example shows how text in the color `rgb(173, 83, 83)` looks like.

```
.text, #text, p{  
    color:rgb(173, 83, 83)  
}
```

If you want to add a text shadow in that color use the text-shadow property, you can generate a text shadow directly with our [CSS Text Shadow Generator](#).

Here you see how black text with a 4 pixel rgb(173, 83, 83) colored shadow looks like.

```
.shadow{ text-shadow: 4px 4px 2px rgb(173, 83, 83) }
```

Border

The CSS property to change the border of an element to HunterLab 39.6173, 29.2893, 12.6774 is called "border". The border property can be set on classes, ids or directly on the HTML element.

This example shows the color as border, it can be applied via the CSS property "border" or "border-color".

```
.border, #border, table{ border:4px solid rgb(173, 83, 83) }
```


If only the border color should be changed use the property `border-color`.

```
.border{ border-color:rgb(173, 83, 83) }
```

If you want to add a box shadow in that color use:

Here you see how a box with a 4 pixel `rgb(173, 83, 83)` colored shadow looks like.

```
.boxshadow{ -moz-box-shadow:4px 4px 4px  
4px rgb(173, 83, 83); -webkit-box-  
shadow:4px 4px 4px 4px rgb(173, 83, 83);  
box-shadow:4px 4px 4px 4px rgb(173, 83,  
83) }
```

Background

The CSS property to change the background color of an element to HunterLab 39.6173, 29.2893, 12.6774 is called "background". The background property can be set on classes, ids or directly on the HTML element.

```
.background, #background, body{  
background: rgb(173, 83, 83) }
```

If only the background color should be changed can be used:

```
.background{ background-color: rgb(173, 83,  
83) }
```

This example shows the color as background, it is applied via the CSS property "background".

To optimize and compress your CSS code, you can use our [online CSS compressor and optimizer](#) based on csstidy. If you want to create a linear or radial gradient as background or border, check our [CSS Gradient Generator](#).

Hey! You found this booklet
interesting? Support Converting
Colors with the new Membership
Option!

The pro membership hides all ads, plus gives you
double the colors in the color bucket, and more
awesome pro features!

[Learn more, Memberships starting at \\$2.50/m!](#)

**Follow me
on Twitter!**

@ConvertingColor