

Converting Colors

HunterLab(39.7335, 5.9103,
12.3255)

Have a look what the booklet for
HunterLab(39.7335, 5.9103,
12.3255) contains.

HunterLab(39.8039, 5.8088, 12.4388)	3
<i>Conversions</i>	4
<i>Details</i>	6
<i>Harmonies</i>	12
<i>Previews</i>	24
<i>Color Blindness Simulation</i>	28
<i>CSS Examples</i>	31

Color

**HunterLab(39.8039, 5.8088,
12.4388)**

Conversions

Conversions Part 1

Format	Color
Hex	896853
RGB	137, 104, 83
RGB Percent	54%, 41%, 33%
CMY	0.4627, 0.5921, 0.6745
CMYK	0.00, 0.24, 0.39, 0.46
HSL	23°, 25%, 43%
HSV	23°, 39%, 54%
XYZ	16.8282, 15.8435, 10.3547
YIQ	111.4730, 26.4090, 0.4650

Conversions

Conversions Part 2

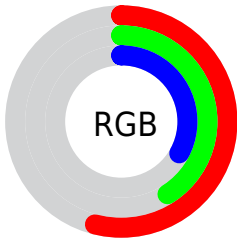
Format	Color
R_{YB}	137, 117, 83
Decimal	9005139
CIE Lab	46.77, 10.20, 16.93
CIE LCh	47, 19.770, 58.924
Yxy	15.8443, 0.3911, 0.3682
Android (android.graphics.Color)	4287195219 (0xFF896853)
YUV	111.4730, -14.0372, 22.3872
Hunter-Lab	39.8039, 5.8088, 12.4388

Details

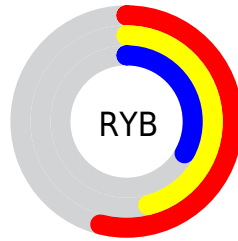
The HunterLab color **39.8039, 5.8088, 12.4388** is a dark color, and the websafe version is hex **996666**. A complement of this color would be **40.1688, -6.6264, -10.2970**, and the grayscale version is **40.0966, -2.1395, 2.1785**.

A 20% lighter version of the original color is **60.2848, 6.1090, 15.4301**, and **22.4603, 5.6030, 9.0974** is the 20% darker color. If you saturate the color by 10%, you get **37.4841, 8.4497, 14.2623**, and if you desaturate by 10%, it is **42.2459, 3.3748, 10.3213**.

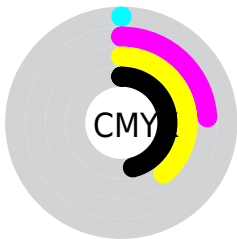
Distribution



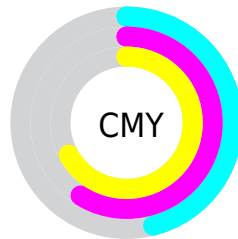
- Red (54%)
- Green (41%)
- Blue (33%)



- Red (54%)
- Yellow (46%)
- Blue (33%)



- Cyan (0%)
- Magenta (24%)
- Yellow (39%)
- Black (46%)



- Cyan (46%)
- Magenta (59%)
- Yellow (67%)

Brightness & Saturation Gradients

These gradients show how the HunterLab color 39.8039, 5.8088, 12.4388 changes by changing the brightness by 10 percent. The first figure shows a shift by +10% for each color and the second figure -10%.

Similar to the brightness gradients but the following saturation gradients show a change of the HunterLab color 39.8039, 5.8088, 12.4388 by changing the saturation by 10% instead.

■ 39.8039, 5.8088,
12.4388

■ 39.8039, 5.8088,
12.4388

151.1360, 4.0344,
25.8596

■ 30.6823, 5.6865,
10.7986

■ 60.2724, 5.8088,
15.5526

■ 22.3879, 5.4674,
9.0636

■ 71.5189, 5.7088,
17.0585

■ 15.0147, 5.1277,
7.2028

■ 83.3891, 5.5506,
18.5444

■ 8.6569, 4.7928,
6.0599

■ 95.8518, 5.3391,
20.0170

0.0000, NaN, NaN

0.0000, NaN, NaN

■ 108.8801, 5.0786,
21.4814

0.0000, NaN, NaN

122.4505, 4.7725,

0.0000, NaN, NaN

22.9414

0.0000, NaN, NaN

136.5420, 4.4236,
24.4000

■ 39.8039, 5.8088,
12.4388

■ 39.8039, 5.8088,
12.4388

■ 37.4841, 8.4497,
14.2623

■ 42.2459, 3.3748,
10.3213

■ 35.2969, 11.3055,
15.7487

■ 44.7952, 1.1429,
7.9456

■ 33.2578, 14.3664,
16.8563

■ 47.4423, -0.9016,
5.3454

■ 31.3824, 17.6085,
17.5465

■ 50.1780, -2.7737,
2.5491

■ 29.6861, 20.9850,
17.7940

■ 52.9942, -4.4886,
-0.4193

■ 28.1737, 24.3780,
17.7389

■ 55.8840, -6.0610,
-3.5393

■ 28.0904, 24.5710,
17.7393

■ 58.8412, -7.5048,
-6.7938

■ 61.8605, -8.8326,
-10.1686

■ 64.9373, -10.0561,
-13.6515

Harmonies

Analogous

The Analogous color harmony consists of three colors that are next to each other on the color wheel.



39.8048, 11.6775, 8.3936



39.8039, 5.8088, 12.4388



39.8048, -1.8476, 13.8316

Triad

The Triadic color harmony groups three colors that are evenly spaced from another and form a triangle on the color wheel.



39.8048, 5.8072, 12.4394



39.8048, -15.8722, 2.4303



39.8048, 5.2898, -12.2349

Complementary

The Complementary color scheme is a pair of colors which are on the opposite of each other on the color wheel.



39.8039, 5.8088, 12.4388



40.1688, -6.6264, -10.2970

Split Complementary

Split-complementary colors differ from the complementary color scheme. The scheme consists of three colors, the original color and two neighbors of the complement color.



39.8048, -2.4037, -14.6414



39.8039, 5.8088, 12.4388



39.8048, -14.2722, -5.2637

Square

The Square scheme is like the rectangle color scheme, but the four colors are evenly spaced on the color wheel.



39.8048, 5.8072, 12.4394



39.8048, -14.0282, 8.7718



39.8048, -9.4828, -11.8802



39.8048, 11.3632, -5.8093

Rectangle

The Rectangle color scheme consists of four colors that form a rectangle on the color wheel.



39.8039, 5.8088, 12.4388



39.8048, -6.8142, 13.3186



39.8048, -9.4828, -11.8802



39.8048, 2.7897, -13.5891

Sweetspot

The Sweet Spot groups the original color and five complimentary colors.



39.8048, 5.8072, 12.4394



62.4661, -0.4513, 8.1730



35.7393, 20.2638, -5.1860



29.4028, -0.0768, 4.0498



83.1908, -4.4389, 4.5199



31.6988, -1.6914, 1.7223

Same Dimension

The Same Dimension uses a secret algorithm to generate beautiful new colors.



39.8048, 5.8072, 12.4394



50.5796, 10.8032, 18.7752



47.0054, -6.4855, 18.5284



23.1233, -0.4632, 2.5676



27.1518, 23.6095, 17.1441



2.7563, 0.7051, 1.7108

Inverse Universe

The Inverse Universe completely reimagines the original color for something new.



40.1688, -6.6264, -10.2970



51.1505, -9.1690, -17.7693



32.9243, 5.7068, -22.2316



23.1676, -1.9255, -0.1043



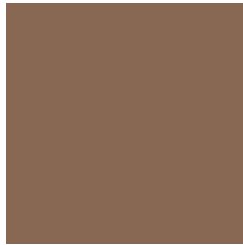
27.5156, -1.7662, -30.5794



2.8076, -0.9864, -1.3799

Previews

White Background



This preview shows how the HunterLab color 39.8039, 5.8088, 12.4388 looks on a white background.

Color Contrast Check

Large Text (above 18pt) WCAG AA ✓ Pass

Any Text WCAG AA ✓ Pass

Large Text (above 18pt) WCAG AAA ✓ Pass

Any Text WCAG AAA × Fail

Black Background



This preview shows how the HunterLab color 39.8039, 5.8088, 12.4388 looks on a black background.

Color Contrast Check

Large Text (above 18pt) WCAG AA ✓ Pass

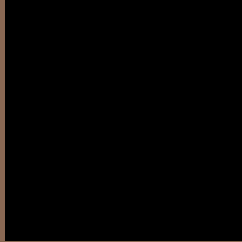
Any Text WCAG AA × Fail

Large Text (above 18pt) WCAG AAA × Fail

Any Text WCAG AAA × Fail

If you want to check with other color combinations, try the [Color Contrast Checker](#).

HunterLab 39.8039, 5.8088, 12.4388 Background



This preview shows how black text looks on a background with the HunterLab color 39.8039, 5.8088, 12.4388.



This preview shows how white text looks on a background with the HunterLab color 39.8039, 5.8088,

Color Blindness Simulation

Color vision deficiency is a very complex topic, and I could not describe the different causes any better than Wikipedia does, so if you want to learn more, you should check out their [article about color blindness](#).

Dichromacy



Original Color

39.8039, 5.8088, 12.4388

Protanopia

39.8652, -3.3373, 11.4123

Deuteranopia

39.6962, 2.8173, 12.2870



Tritanopia

39.8485, 10.9309, 3.6367

Trichromacy



Original Color

39.8039, 5.8088, 12.4388

Protanomaly

39.6749, 0.1232, 11.6063

Deuteranomaly

39.6412, 3.9610, 12.2561

Tritanomaly

39.7579, 8.9246, 7.0512

Monochromacy



Original Color

39.8039, 5.8088, 12.4388

Achromatopsia

39.8699, -2.1274, 2.1662

Achromatomaly

39.5699, 0.4804, 5.9435

CSS Examples

Text

The CSS property to change the color of the text to HunterLab 39.8039, 5.8088, 12.4388 is called "color". The color property can be set on classes, ids or directly on the HTML element.

This example shows how text in the color `rgb(137, 104, 83)` looks like.

```
.text, #text, p{  
    color:rgb(137, 104, 83)  
}
```

If you want to add a text shadow in that color use the text-shadow property, you can generate a text shadow directly with our [CSS Text Shadow Generator](#).

Here you see how black text with a 4 pixel rgb(137, 104, 83) colored shadow looks like.

```
.shadow{ text-shadow: 4px 4px 2px rgb(137, 104, 83) }
```

Border

The CSS property to change the border of an element to HunterLab 39.8039, 5.8088, 12.4388 is called "border". The border property can be set on classes, ids or directly on the HTML element.

This example shows the color as border, it can be applied via the CSS property "border" or "border-color".

```
.border, #border, table{ border:4px solid rgb(137, 104, 83) }
```


If only the border color should be changed use the property `border-color`.

```
.border{ border-color:rgb(137, 104, 83) }
```

If you want to add a box shadow in that color use:

Here you see how a box with a 4 pixel `rgb(137, 104, 83)` colored shadow looks like.

```
.boxshadow{ -moz-box-shadow:4px 4px 4px  
4px rgb(137, 104, 83); -webkit-box-  
shadow:4px 4px 4px 4px rgb(137, 104, 83);  
box-shadow:4px 4px 4px 4px rgb(137, 104,  
83) }
```

Background

The CSS property to change the background color of an element to HunterLab 39.8039, 5.8088, 12.4388 is called "background". The background property can be set on classes, ids or directly on the HTML element.

```
.background, #background, body{  
background: rgb(137, 104, 83) }
```

If only the background color should be changed can be used:

```
.background{ background-color: rgb(137,  
104, 83) }
```

This example shows the color as background, it is applied via the CSS property "background".

To optimize and compress your CSS code, you can use our [online CSS compressor and optimizer](#) based on csstidy. If you want to create a linear or radial gradient as background or border, check our [CSS Gradient Generator](#).

Hey! You found this booklet interesting? Support Converting Colors with the new Membership Option!

The pro membership hides all ads, plus gives you double the colors in the color bucket, and more awesome pro features!

[Learn more, Memberships starting at \\$2.50/m!](#)

**Follow me
on Twitter!**

@ConvertingColor