

Converting Colors

HunterLab(39.9026, 31.1514,
12.3461)

Have a look what the booklet for
HunterLab(39.9026, 31.1514,
12.3461) contains.

HunterLab(39.9006, 31.1054, 12.3604)	3
<i>Conversions</i>	4
<i>Details</i>	6
<i>Harmonies</i>	12
<i>Previews</i>	24
<i>Color Blindness Simulation</i>	28
<i>CSS Examples</i>	31

Color

**HunterLab(39.9006, 31.1054,
12.3604)**

Conversions

Conversions Part 1

Format	Color
Hex	B05255
RGB	176, 82, 85
RGB Percent	69%, 32%, 33%
CMY	0.3098, 0.6784, 0.6667
CMYK	0.00, 0.53, 0.52, 0.31
HSL	358°, 37%, 51%
HSV	358°, 53%, 69%
XYZ	22.5615, 15.9206, 10.4782
YIQ	110.4480, 55.0610, 20.8610

Conversions

Conversions Part 2

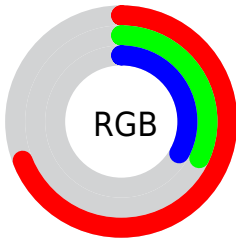
Format	Color
R_{YB}	176, 82, 85
Decimal	11555413
CIE _{Lab}	46.87, 38.59, 16.75
CIE _{LCh}	47, 42.067, 23.459
Yxy	15.9214, 0.4608, 0.3252
Android (android.graphics.Color)	4289745493 (0xFFB05255)
YUV	110.4480, -12.5459, 57.4891
Hunter-Lab	39.9006, 31.1054, 12.3604

Details

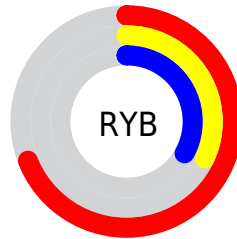
The HunterLab color **39.9006, 31.1054, 12.3604** is a dark color, and the websafe version is hex **CC6666**. A complement of this color would be **59.8849, -25.6642, -2.6933**, and the grayscale version is **39.6914, -2.1178, 2.1565**.

A 20% lighter version of the original color is **60.3835, 33.7366, 15.2920**, and **22.4836, 27.9834, 9.0504** is the 20% darker color. If you saturate the color by 10%, you get **36.5509, 37.6295, 14.3201**, and if you desaturate by 10%, it is **43.8510, 24.3101, 10.4361**.

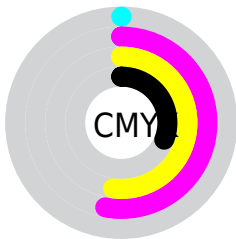
Distribution



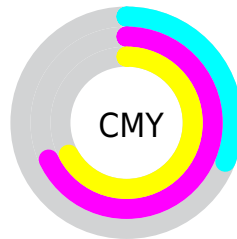
- Red (69%)
- Green (32%)
- Blue (33%)



- Red (69%)
- Yellow (32%)
- Blue (33%)



- Cyan (0%)
- Magenta (53%)
- Yellow (52%)
- Black (31%)



- Cyan (31%)
- Magenta (68%)
- Yellow (67%)

Brightness & Saturation Gradients

These gradients show how the HunterLab color 39.9006, 31.1054, 12.3604 changes by changing the brightness by 10 percent. The first figure shows a shift by +10% for each color and the second figure -10%.

Similar to the brightness gradients but the following saturation gradients show a change of the HunterLab color 39.9006, 31.1054, 12.3604 by changing the saturation by 10% instead.

■ 39.9006, 31.1054,
12.3604

■ 39.9006, 31.1054,
12.3604

151.2870, 39.7081,
25.6933

■ 30.7710, 29.6214,
10.7349

■ 60.3836, 33.6940,
15.4497

■ 22.4679, 28.0156,
9.0166

■ 71.6366, 34.8203,
16.9447

■ 15.0847, 26.3182,
7.1678

■ 83.5130, 35.8455,
18.4206

■ 8.7217, 24.9039,
6.1052

■ 95.9816, 36.7779,
19.8838

0.0000, INF, NaN

0.0000, NaN, NaN

■ 109.0155, 37.6244,
21.3393

0.0000, NaN, NaN

122.5912, 38.3914,

0.0000, NaN, NaN

22.7909

0.0000, NaN, NaN

136.6879, 39.0843,
24.2415

■ 39.9006, 31.1054,
12.3604

■ 39.9006, 31.1054,
12.3604

■ 36.5509, 37.6295,
14.3201

■ 43.8510, 24.3101,
10.4361

■ 33.8909, 43.4430,
16.1805

■ 48.3058, 17.5424,
8.6209

■ 31.9902, 48.0023,
17.7641

■ 53.1834, 10.9533,
6.9470

■ 30.8602, 50.8676,
18.8998

■ 58.4154, 4.6047,
5.4184

■ 30.4013, 52.1035,
19.3312

■ 63.9464, -1.4935,
4.0258

■ 69.7325, -7.3576,
2.7540

■ 75.7390, -13.0144,
1.5868

■ 81.9383, -18.4933,
0.5087

■ 88.3081, -23.8222,
-0.4937

Harmonies

Analogous

The Analogous color harmony consists of three colors that are next to each other on the color wheel.



39.9017, 34.2680, -1.3976



39.9006, 31.1054, 12.3604



39.9017, 18.4276, 19.5348

Triad

The Triadic color harmony groups three colors that are evenly spaced from another and form a triangle on the color wheel.



39.9017, 31.1027, 12.3611



39.9017, -24.4324, 16.2198



39.9017, -5.6594, -40.5861

Complementary

The Complementary color scheme is a pair of colors which are on the opposite of each other on the color wheel.



39.9006, 31.1054, 12.3604



59.8849, -25.6642, -2.6933

Split Complementary

Split-complementary colors differ from the complementary color scheme. The scheme consists of three colors, the original color and two neighbors of the complement color.



39.9017, -19.2203, -30.2159



39.9006, 31.1054, 12.3604



39.9017, -28.8698, 5.4395

Square

The Square scheme is like the rectangle color scheme, but the four colors are evenly spaced on the color wheel.



39.9017, 31.1027, 12.3611



39.9017, -13.9217, 21.0512



39.9017, -27.1286, -11.7060



39.9017, 11.2105, -36.2951

Rectangle

The Rectangle color scheme consists of four colors that form a rectangle on the color wheel.



39.9006, 31.1054, 12.3604



39.9017, 7.2469, 21.5518



39.9017, -27.1286, -11.7060



39.9017, -10.7159, -38.5978

Sweetspot

The Sweet Spot groups the original color and five complimentary colors.



39.9017, 31.1027, 12.3611



76.6002, 8.6240, 7.8693



42.4724, 43.5945, -30.4035



34.9988, 4.8071, 3.8530



94.3401, -5.0338, 5.1257



41.3092, -2.2042, 2.2444

Same Dimension

The Same Dimension uses a secret algorithm to generate beautiful new colors.



39.9017, 31.1027, 12.3611



48.5406, 52.1070, 19.7304



49.7270, 9.4369, 21.2876



29.1711, 1.0054, 2.3262



26.0442, 44.6425, 16.5111



4.6354, 7.9766, 2.6975

Inverse Universe

The Inverse Universe completely reimagines the original color for something new.



39.9017, 31.1027, 12.3611



48.5406, 52.1070, 19.7304



46.3337, -5.6278, -24.1077



29.1711, 1.0054, 2.3262



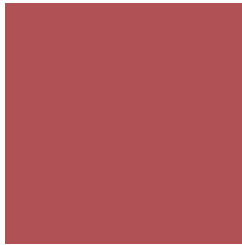
26.0442, 44.6425, 16.5111



4.6354, 7.9766, 2.6975

Previews

White Background



This preview shows how the HunterLab color 39.9006, 31.1054, 12.3604 looks on a white background.

Color Contrast Check

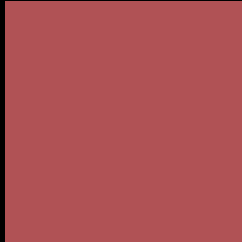
Large Text (above 18pt) WCAG AA ✓ Pass

Any Text WCAG AA ✓ Pass

Large Text (above 18pt) WCAG AAA ✓ Pass

Any Text WCAG AAA × Fail

Black Background



This preview shows how the HunterLab color 39.9006, 31.1054, 12.3604 looks on a black background.

Color Contrast Check

Large Text (above 18pt) WCAG AA ✓ Pass

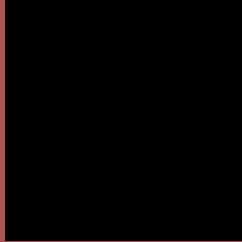
Any Text WCAG AA × Fail

Large Text (above 18pt) WCAG AAA × Fail

Any Text WCAG AAA × Fail

If you want to check with other color combinations, try the [Color Contrast Checker](#).

HunterLab 39.9006, 31.1054, 12.3604 Background



This preview shows how black text looks on a background with the HunterLab color 39.9006, 31.1054, 12.3604.

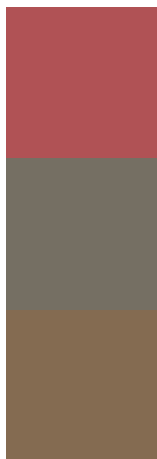


This preview shows how white text looks on a background with the HunterLab color 39.9006, 31.1054,

Color Blindness Simulation

Color vision deficiency is a very complex topic, and I could not describe the different causes any better than Wikipedia does, so if you want to learn more, you should check out their [article about color blindness](#).

Dichromacy



Original Color

39.9006, 31.1054, 12.3604

Protanopia

40.0645, -2.0682, 7.1825

Deuteranopia

40.0188, 2.4873, 13.1696



Tritanopia

39.9410, 31.2929, 11.7743

Trichromacy



Original Color

39.9006, 31.1054, 12.3604

Protanomaly

39.1481, 9.2720, 8.2471

Deuteranomaly

39.5480, 12.5007, 12.6207

Tritanomaly

39.9206, 31.1986, 12.0693

Monochromacy



Original Color

39.9006, 31.1054, 12.3604

Achromatopsia

39.4875, -2.1070, 2.1454

Achromatomaly

38.8874, 8.7760, 5.3443

CSS Examples

Text

The CSS property to change the color of the text to HunterLab 39.9006, 31.1054, 12.3604 is called "color". The color property can be set on classes, ids or directly on the HTML element.

This example shows how text in the color `rgb(176, 82, 85)` looks like.

```
.text, #text, p{  
    color:rgb(176, 82, 85)  
}
```

If you want to add a text shadow in that color use the text-shadow property, you can generate a text shadow directly with our [CSS Text Shadow Generator](#).

Here you see how black text with a 4 pixel rgb(176, 82, 85) colored shadow looks like.

```
.shadow{ text-shadow: 4px 4px 2px rgb(176, 82, 85) }
```

Border

The CSS property to change the border of an element to HunterLab 39.9006, 31.1054, 12.3604 is called "border". The border property can be set on classes, ids or directly on the HTML element.

This example shows the color as border, it can be applied via the CSS property "border" or "border-color".

```
.border, #border, table{ border:4px solid rgb(176, 82, 85) }
```


If only the border color should be changed use the property border-color.

```
.border{ border-color:rgb(176, 82, 85) }
```

If you want to add a box shadow in that color use:

Here you see how a box with a 4 pixel rgb(176, 82, 85) colored shadow looks like.

```
.boxshadow{ -moz-box-shadow:4px 4px 4px  
4px rgb(176, 82, 85); -webkit-box-  
shadow:4px 4px 4px 4px rgb(176, 82, 85);  
box-shadow:4px 4px 4px 4px rgb(176, 82,  
85) }
```

Background

The CSS property to change the background color of an element to HunterLab 39.9006, 31.1054, 12.3604 is called "background". The background property can be set on classes, ids or directly on the HTML element.

```
.background, #background, body{  
background: rgb(176, 82, 85) }
```

If only the background color should be changed can be used:

```
.background{ background-color: rgb(176, 82,  
85) }
```

This example shows the color as background, it is applied via the CSS property "background".

To optimize and compress your CSS code, you can use our [online CSS compressor and optimizer](#) based on csstidy. If you want to create a linear or radial gradient as background or border, check our [CSS Gradient Generator](#).

Hey! You found this booklet interesting? Support Converting Colors with the new Membership Option!

The pro membership hides all ads, plus gives you double the colors in the color bucket, and more awesome pro features!

[Learn more, Memberships starting at \\$2.50/m!](#)

**Follow me
on Twitter!**

@ConvertingColor